

POSTAL RATES 1840-1937

After the establishment of a permanent settlement by Great Britain in the Falkland Islands in 1833, the first civil Governor arrived in 1842. Ten years followed in which postal communications with the outside world were wholly dependant on the irregular arrangements he managed to make with provisioning ships, sealers, whalers and other chance callers.

The postal rate at this time was high, 2s.7d. for packet mail. The situation changed with the incorporation of the Falkland Islands Company in 1851 and the first mail contract was signed on 21 April 1852. A regular mail service was established with sailings every two months and the packet rate was reduced to 1s.

A further reduction took place in 1858 but it was not until the Falkland Islands joined the Universal Postal Union on 1 April 1879 that the rate was reduced to 4d. per ½oz.

GREAT BRITAIN AND THE EMPIRE

LETTERS

Before April 1879 the rates are to Great Britain only. Rates to other British Colonies were a combination of the rate to Great Britain plus the GPO rate from Great Britain to the destination.

PRE-STAMP PERIOD:

1840	2s.7d. per ½oz. (one example known) one example shown
1852 (7 June)	1s. per ½oz. (no examples known)
1858 (25 June)	6d. per ½oz., one example shown

STAMP PERIOD (from 19 June 1878):

1878 (19 June)	6d. per ½oz. (one example known) one example shown
1879 (1 April) UPU	4d. per ½oz., two examples shown
1891 (1 January)	2½d. per ½oz., two examples shown 5d. for 1oz., two examples shown
1898 (25 December)	1d. per ½oz., one example shown 2d. for 1oz., one example shown
1907 (1 October)	1d. per oz., one example shown 2d. for 2oz., one example shown
[1948 (1 May)]	2½d. per oz.]

2/7 for ½oz (1840-1852)

1844 PAID PACKET LETTER FROM LONDON TO CAPT. R.C. MOODY,
(PORT WILLIAM), GOVERNOR OF THE FALKLAND ISLANDS

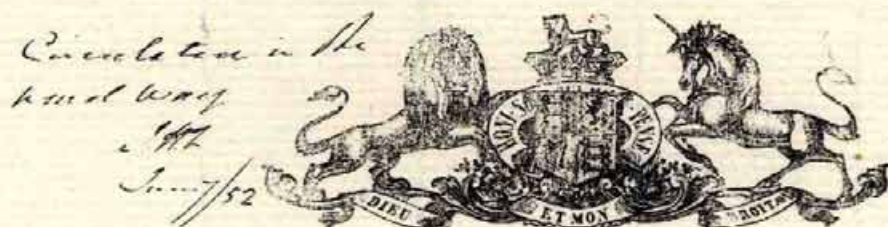


RATE: Manuscript "2/7", "paid" and "p. Rio Packet"; 2sh. 7d. per half ounce, packet rate between GB and the Falkland Islands between August 1840 and July 1852

POSTMARKS: London PAID L.S. 7.MY.1844, transit marking RIO JANEIRO 1844.JU.18

CARRIED BY: "Peterel", dep. Falmouth 10/5, arr. Rio de Janeiro 18/6; "Cockatrice", dep. Rio de Janeiro 21/6, arr. Montevideo 2/7; "HMS Philomel" from Montevideo to Port William, Falkland Islands, arr. 21/10

COMMENT: The letter concerns a ship condemned at Port Louis on 8 November 1843. "Alliance Marine Ap. Office, London 7 May 1844. Sir, Not being acquainted with any one at the Falkland Islands I have taken the liberty of addressing you respecting the Ship "Venture", Capt. Patrick, that put into Port Louis in Nov. last on a voyage from the Pacific with Copper Ore for England, where she was condemned, unworthy of repair and abandoned, the Cargo being transhipped into other Vessels. The Alliance Office are underwriters on part of both Ship and freight and from the papers handed to them consisting of a Protest and Survey dated the 11 Nov 1843, signed by the Master of H.M.S. Philomel (and others), it appears she was much strained by heavy weather..." THIS IS THE SECOND EARLIEST KNOWN COVER ADDRESSED TO THE FALKLAND ISLANDS.



By Command of the Postmaster General.

NOTICE TO THE PUBLIC,

AND

Instructions to all Postmasters.

Mails ^{for} _{the} Falkland Islands.

GENERAL POST OFFICE.

June, 1852.

MAILS for the FALKLAND ISLANDS will hereafter be made up at this Office, *on the Morning of the 9th of every Month*, for conveyance, by the Brazil Packet, to Monte Video, from whence they will be transmitted by a sailing Packet, provided under a Contract which has been entered into between Her Majesty's Government and the Falkland Islands' Company.

Letters for the Falkland Islands will be liable to the usual Colonial Packet rate of *One Shilling* when not exceeding Half an Ounce in weight, *Two Shillings* when not exceeding an Ounce, and so on; *and this Postage must be paid in advance, or the Letters cannot be forwarded.*

Newspapers will be conveyed *free from Charge.*



Reduction of Postage on Letters to the Falkland Islands, Gambia, Labuan, Vancouver's Island, the Ionian Islands, and Natal.

On the 1st July next, and thenceforward, the uniform Sixpenny rate of Postage will be extended to Letters transmitted between the United Kingdom and the following British Colonies, viz.:—

<i>Colony.</i>	<i>How Conveyed.</i>
Falkland Islands	By Packet or Private Ship.
Gambia	
Labuan	
Vancouver's Island	By Private Ship.
Ionian Islands . .	
Natal	By Packet via the Cape of Good Hope or Private Ship direct.

For a Letter above half an ounce, and not exceeding one ounce, the Postage will be One Shilling.

When above one ounce, and not exceeding two ounces, Two Shillings, and so on, increasing One Shilling for every additional ounce or fraction of an ounce.

The Postage of Letters to the above-mentioned Colonies must, in all cases, *be paid in advance.*

By Command of the Postmaster-General,

ROWLAND HILL,
SECRETARY.

GENERAL POST OFFICE,
19th June, 1857.

6d. for ½oz (1858-1879)

1871 BLACK FRANK COVER TO LONDON



RATE: Manuscript "6"; 6d. imperial rate (1858-79)

POSTMARKS: The Black Frank, FALKLAND PAID ISLANDS; JY.17.1871 (type F.1)

CARRIED BY: "Fairy", dep. 18/7; "John Elder", dep. Montevideo 28/7, arr. Liverpool 31/8

ARRIVAL MARKING: London Paid 1.SP.71

6d. for ½oz (1858-1879)

1878 SINGLE RATE COVER TO ENGLAND
SENT ON THE FIRST DAY OF USE OF FALKLAND ISLAND STAMPS



RATE: 6d. imperial rate (1858-79)

STAMP: Great Britain QV 6d. grey (plate 15) 1876

POSTMARK: FALKLAND ISLANDS JY.2.1878 (type F.1)

CARRIED BY: "Black Hawk", dep. 2/7; L&H "Hevelius" from Montevideo, arr. Southampton 7/8

ARRIVAL MARKING: Southampton Ship Letter AU.7.78

COMMENT: THIS IS THE ONLY KNOWN example of the 6d. imperial rate paid with stamps. The first Falkland Islands stamps were used on this mail but no covers are known. Why this cover has a British stamp instead is not clear. It could be either a paquebot letter or somebody who happened to have a British 6d. stamp, which was accepted by the Falkland Islands Post Office.

4d. for ½oz (1879-1890)

1879 SINGLE RATE COVER TO ENGLAND -
THE ONLY KNOWN COVER WITH THE FIRST 1D. STAMP



RATE: 4d. imperial rate (1879-90)

STAMPS: QV 1d.(x4) (1878 printing)

POSTMARKS: Steel obliterator "F.I." (type Ob.1/78); AP.4.1879 (type F.1)

CARRIED BY: "Black Hawk", dep. 4/4; "Illimani", from Montevideo to Liverpool, arr. 20/5

ARRIVAL MARKING: Bromsgrove MY.19.79

COMMENT: THIS IS THE ONLY KNOWN COVER WITH THE FIRST FALKLAND ISLANDS 1D. STAMP, sent on the first mail after the islands joined the UPU and the imperial rate was reduced to 4d. It is undoubtedly one of the most important Falkland Islands covers in existence! It also shows the earliest known usage of the "F.I." Steel Obliterator. One of the stamps is repaired.

4d. for ½oz (1879-1890)

1885 SINGLE RATE COVER TO ENGLAND



RATE: 4d. imperial rate (1879-90)

STAMP: QV 4d. (1882 printing)

POSTMARKS: Steel obliterator
"F.I." (type Ob.1/78); AP.18.1885
(type F.1)

CARRIED BY: "Menes", dep. 18/4;
"Aconcagua" from Punta Arenas to
Lisbon, arr. 23/5

ARRIVAL MARKING: Ashton
Station Office MY.27.85

In replying please quote No. and
Date of this letter.

Government Office,

Stanley. 15 December 1890.

Falkland Islands.

No. 467.

Sir,

With reference to a
correspondence which has passed
between the Governor of this
Colony and the Secretary of
State for the Colonies, I am
directed by His Excellency to
inform you that this Colony
has agreed to the proposal
to adapt the twopenny half-
penny rate of postage to
Great Britain, India and

The Secretary
General Post Office
London.

the colonies and the arrangement
will come into force on the 1.st
of January 1891.

2. Pending receipt of 2 $\frac{1}{2}$ ^d
and $\frac{1}{2}$ d. labels which have
been requisitioned for the
 $\frac{1}{2}$ d. stamp will be the
half of a penny stamp
cut diagonally.

I have the honor to be,

Li,

Your obedient Servant

Sir,
Your obedient Servant
Jes. Sheldon Surgeon 27th

of Postmark.

2½d. for ½oz (1891-1898)

1891 SINGLE RATE COVER TO ENGLAND WITH A SURCHARGED
BISECT SE-TENANT WITH UNSURCHARGED STAMPS



RATE: 2½d. imperial
rate (1891-98)

STAMPS: QV 1d. strip
of three, one bisected
and surcharged "½d."
(April 1891 printing)

POSTMARKS: Cork
obliterator "First Bi-
sect" (type Ob.1/90);
AU.3.1891 (type F.2)

CARRIED BY: "Kar-
nak", dep. 5/8; "Sora-
ta" from Montevideo
to Lisbon, arr. 10/9

ARRIVAL MARKING:
London SP.14.91

COMMENT: THIS IS
THE ONLY KNOWN
complete cover with a
surcharged bisect se-
tenant with unsur-
charged stamps.

2½d. for ½oz (1891-1898)

1894 SINGLE RATE COVER TO CYPRUS



RATE: 2½d. imperial rate (1891-98)

STAMP: 2½d.
(July 1894 printing)

POSTMARKS:
Cork obliterator
"Small Windmill"
(type Ob. 6/94);
SP.16.1894 (type
F.1)

CARRIED BY:
"Herodot", dep.
17/9, arr. London
18/10

5d. for 1oz (1891-1898)

1891 DOUBLE RATE COVER TO ENGLAND WITH FOUR
UNSEVERED PAIRS AND TWO SURCHARGED BISECTS



RATE: 5d. (2x2½d.) double imperial
rate (1891-98)

STAMPS: QV four unsevered
surcharged pairs and two bisects
surcharged "½d." (1887 printing)

POSTMARKS: Cork obliterator
"First Bisect" (type Ob.1/90);
MR.28.1891 (type F.2)

CARRIED BY: "Isis", dep. 29/3, arr.
London 4/5

COMMENT: THIS IS THE ONLY
KNOWN cover with this combina-
tion and it is undoubtedly the most
important bisect cover.

5d. for 1oz (1891-1898)

1891 DOUBLE RATE COVER TO ENGLAND



RATE: 5d. (2x 2½d.) double imperial rate (1891-98); manuscript "2" to indicate double rate

STAMPS: QV 1d. (1887 printing), 4d. (1889 printing)

POSTMARKS: Cork obliterator "First Bisect" (type Ob.1/90); FE.12.1891 (type F.2)

CARRIED BY: "Denderah", dep. 13/2, arr. London 21/3

ARRIVAL MARKING: Maidstone MR.31.1891

COMMENT: The cover was sent by a member of the crew of H.M.S. Beagle which had arrived in Stanley on 21 January 1891.

1d. for ½oz (1898-1907)

1905 SINGLE RATE COVER TO LONDON



RATE: 1d. imperial rate (1898-1948)

STAMPS: QV ½d. (1902 printing), KEVII ½d. (1904 printing)

POSTMARK: SP.12.05 (type F.4C)

CARRIED BY: "Orita", dep. 13/9

ARRIVAL MARKING: London
OC.9.05

2d. for 1oz (1898-1907)

1902 DOUBLE RATE COVER TO ENGLAND WITH 1D. ENVELOPE CUT-OUTS



RATE: 2d. (2x1d.) double imperial rate (1898-1948)

STATIONERY: QV 1d.(x2) cut-outs from envelope (type E1)

POSTMARK: AP.6.02 (type F.4A)

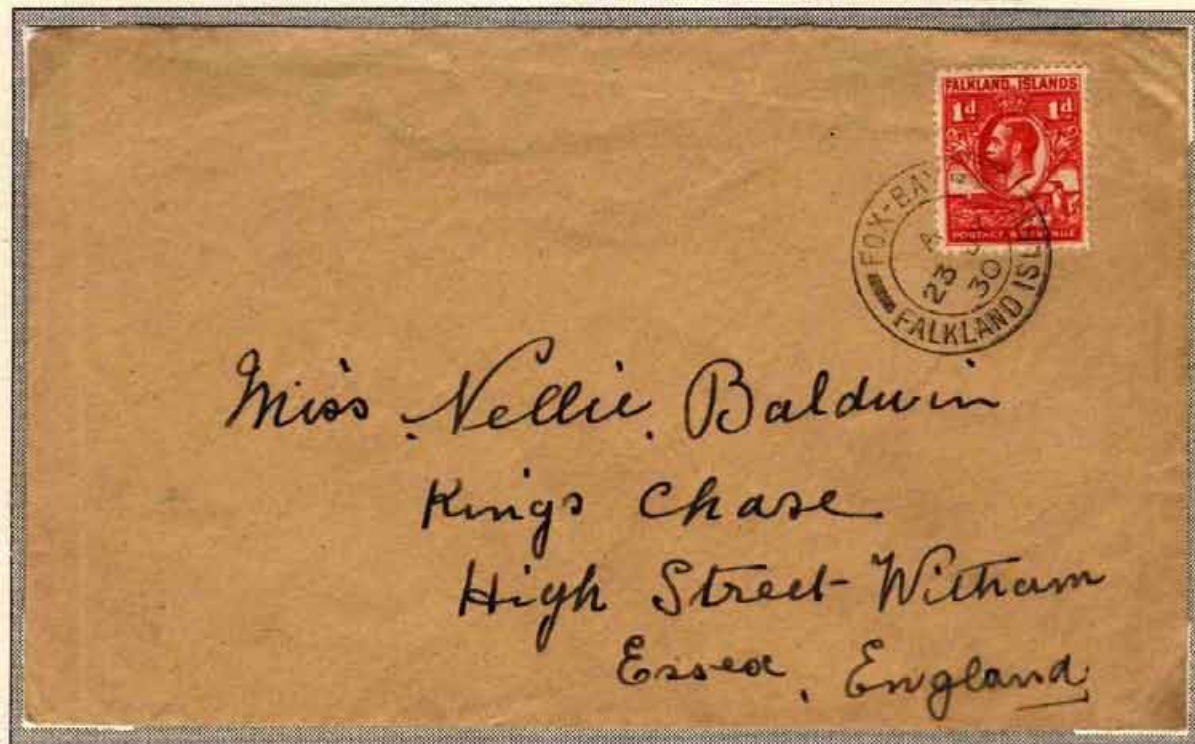
CARRIED BY: "Lake Megantic", dep. 8/4

ARRIVAL MARKING: Chiswick MY.7.02

COMMENT: THERE ARE ONLY TWO KNOWN covers from the Falkland Islands with postal stationery cut-outs.

1d. for 1oz (1907-1948)

1930 SINGLE RATE COVER FROM FOX BAY TO ENGLAND



RATE: 1d. im-
perial rate
(1898-1948)

STAMP: Whale
& Penguins 1d.
(1929 printing)

POSTMARK:
23.JY.30 (type
FB.1)

CARRIED BY:
"Falkland", dep.
Stanley 12/8

2d. for 2oz (1907-1948)

1921 DOUBLE RATE COVER TO ENGLAND



RATE: 2d.(2x 1d.) double
imperial rate (1898-1948)

STATIONERY / STAMP:
KGV 1d. envelope (type
E3), 1d. (1916 printing)

POSTMARK: 16.AU.21
(type PS.1B)

CARRIED BY: "Oriana",
dep. 12/9

GREAT BRITAIN AND THE EMPIRE

REGISTERED LETTERS

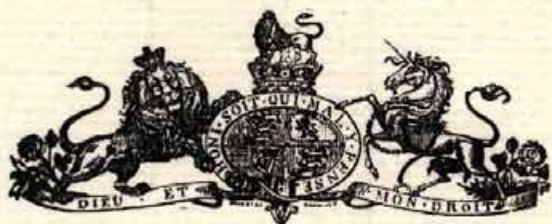
The possibility to register mail from the Falkland Islands was established on 1 June 1862. Initially this service was only available to Great Britain and the registration fee was 6d. This was reduced to 4d. in 1866 and 2d. in 1879.

PRE-STAMP PERIOD:

1862 (1 June)	Fee 6d. (no examples known)
1866 (1 February)	Fee 4d. Total rate 10d. for ½oz., two examples shown Total rate 4/- to Tobago, one example shown

STAMP PERIOD (from 19 June 1878):

1878 (19 June)	Fee 4d. (no examples known)
1879 (1 April) UPU	Fee 2d. Total rate 6d. for ½oz. (one example known) one example shown
1891 (1 January)	Total rate 4½d. for ½oz., two examples shown Total rate 7d. for 1oz., one example shown
1898 (25 December)	Total rate 3d. for ½oz., one example shown
1907 (1 October)	Total rate 3d. for 1oz., one example shown Total rate 4d. for 2oz., two examples shown
1922 (1 January)	Fee 3d. Total rate 4d. for 1oz., two examples shown Total rate 5d. for 2oz., two examples shown Total rate 6d. for 3oz., two examples shown
[1970 (1 July)]	Fee 4d.]



REGISTRATION
OF
LETTERS AND PACKETS OF
PRINTED PAPERS
FOR THE
FALKLAND ISLANDS.

On the 1st June next, and thenceforward, a Letter or a Packet of Printed Papers addressed to the Falkland Islands may be registered on the application of the person posting it, provided the postage, together with a registration fee of sixpence, be paid in advance.

By Command of the Postmaster-General.

ROWLAND HILL,

Secretary.

GENERAL POST OFFICE,
14th May 1862.

10d. for ½oz (6d. letter rate + 4d. registration fee, 1866-1879)

1873 REGISTERED BLACK FRANK COVER TO ENGLAND



RATE: Manuscript "10d."; 6d. imperial rate (1858-79) + 4d. registration fee to the United Kingdom (1866-79)

POSTMARKS: The Black Frank, FALKLAND PAID ISLANDS; JA.3.1872 error for 1873 (type F.1)

REGISTRATION MARKINGS: Crown REGISTERED, first type; manuscript number "88"

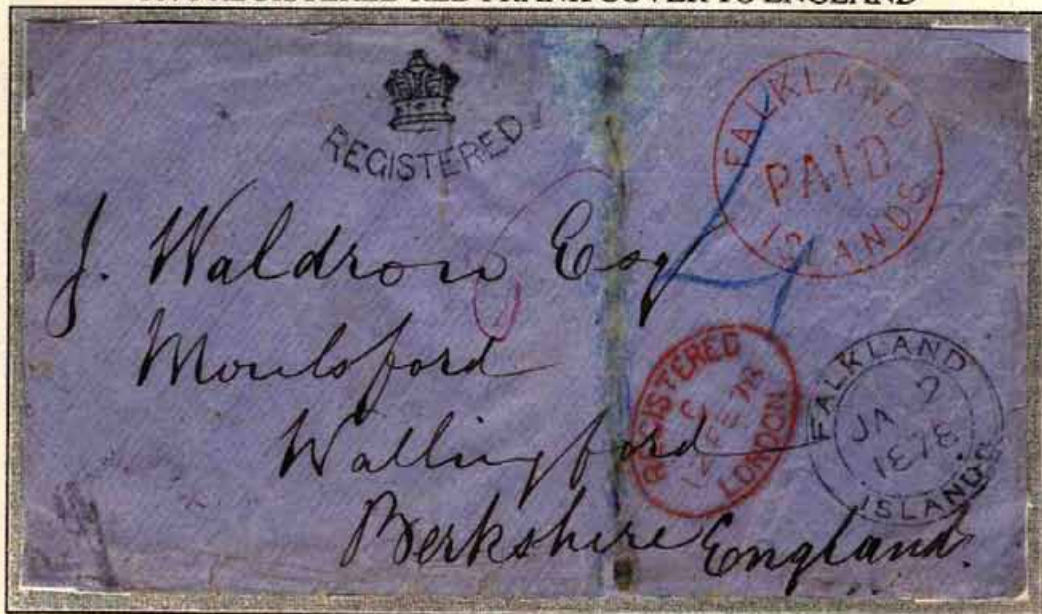
CARRIED BY: "Black Hawk", dep. 3/1; "Boyne", dep. Montevideo 15/1, arr. Southampton 16/2

ARRIVAL MARKINGS: Registered London 17.FE.73; Bedford FE.17.73

COMMENT: This cover was carried by the new Falkland Islands Company mail schooner "Black Hawk" on her first voyage with mail to Montevideo.

10d. for ½oz (6d. letter rate + 4d. registration fee, 1866-1879)

1878 REGISTERED RED FRANK COVER TO ENGLAND



RATE: Manuscript "6" and "4"; 6d. imperial rate (1858-79) + 4d. registration fee to the United Kingdom (1866-79)

POSTMARKS: The Red Frank, FALKLAND PAID ISLANDS; JA.2.1878 (type F.1)

REGISTRATION MARKING: Crown REGISTERED, first type

CARRIED BY: "Sparrow Hawk", dep. 2/1; "Valparaiso", dep. Montevideo 15/1, arr. London 12/2

ARRIVAL MARKINGS: Registered London 12.FE.78; Wallingford FE.13.78

COMMENT: THERE ARE ONLY 3 KNOWN registered Red Frank covers; all are addressed to England.

4/- for 1oz (1/- letter rate + 2/8 GPO rate + 4d. registration fee, 1866-1879)

1875 REGISTERED BLACK FRANK COVER TO TOBAGO, WEST INDIES



RATE: Manuscript "paid 4/-"; 1/- (2x6d.) double imperial rate (1858-79) + 2s.8d. (2x 1s.4d.) double G.P.O. rate from Great Britain to Tobago + 4d. registration fee to the United Kingdom (1866-79)

POSTMARKS: The Black Frank, FALKLAND PAID ISLANDS; AP.2.1875 (type F.1)

REGISTRATION MARKINGS: Crown REGISTERED, first type; manuscript number "19"

CARRIED BY: "Black Hawk", dep. 3/4; "Boyne", dep. Montevideo 16/4, arr. Southampton 18/5

TRANSIT / ARRIVAL MARKINGS: Registered London 18.MY.75; Tobago JY.3.1875; manuscript "2d" denoting Tobago's share of the postage.

COMMENT: THIS IS THE ONLY KNOWN Registered Frank cover addressed outside England. The cover is repaired at the top.

6d. for ½oz (4d. letter rate + 2d. registration fee, 1879-1890)

1889 REGISTERED SINGLE RATE COVER TO LONDON



RATE: 6d.; 4d. imperial rate (1879-90) + 2d. registration fee to G.B. (1879-90)

STAMPS: QV 1d. pair (1887 printing), 4d. (1887 printing)

POSTMARKS: Cork obliterator "Large Football" (type Ob.1/89); OC.18.1889 (type F.1)

REGISTRATION MARKINGS: Crown REGISTERED, first type; manuscript numbers "18" and "513"

CARRIED BY: "Pentaur", dep. 18/10; "Potosi" from Punta Arenas to Lisbon, arr. 29/11

ARRIVAL MARKING: Registered London 2.DE.89

COMMENT: THIS IS THE ONLY KNOWN registered cover showing 4d. imperial rate + 2d. registration fee.

4½d. for ½oz (2½d. letter rate + 2d. registration fee, 1891-1898)

1891 REGISTERED SINGLE RATE COVER TO LONDON



RATE: 4½d.; 2½d. imperial rate (1891-98) + 2d. registration fee (1879-1921)

STAMPS: QV 4d. (1885 printing), "½d." on bisected 1d. (1887 printing) with INVERTED SURCHARGE

POSTMARKS: Cork obliterator "First Bisect" (type Ob.1/90); AU.3.1891 (type F.2)

REGISTRATION MARKINGS: Crown REGISTERED, first type; manuscript "31"

CARRIED BY: "Karnak", dep. 5/8; "Sorata" from Montevideo to Lisbon, arr. 10/9

ARRIVAL MARKING: Registered London 14.SP.91

4½d. for ½oz (2½d. letter rate + 2d. registration fee, 1891-1898)

1893 REGISTERED SINGLE RATE COVER TO ENGLAND



RATE: 4½d.; 2½d. imperial rate
(1891-98) + 2d. registration fee
(1891-1921)

STAMPS: QV "½d." on bisected
1d. (x7) (April 1891 printing), 1d.
(October 1891 printing)

POSTMARKS: Cork obliterator
"Pointed Nose F.I." (type Ob.1/93);
JA.18.1893 (type F.2)

REGISTRATION MARKINGS:
Crown REGISTERED, first type;
encircled R

CARRIED BY: "Totmes", dep.
19/1, arr. London 24/2

TRANSIT / ARRIVAL MAR-
KINGS: Registered London
24.FE.93; Jersey FE.26.93

7d. for 1oz (5d. letter rate + 2d. registration fee, 1891-1898)

1892 REGISTERED DOUBLE RATE O.H.M.S. COVER TO ENGLAND



RATE: 7d.; 5d. (2x 2½d.) double imperial rate (1891-98) + 2d. registration fee (1891-1921)

STAMPS: QV 1d. (April 1891 printing), 6d. (1878 printing)

POSTMARKS: Steel obliterator "F.I." (type Ob.1/78); JA.16.1892 (type F.2)

REGISTRATION MARKINGS: Crown REGISTERED, first type

CARRIED BY: "Herodot", dep. 16/1; "Hevelius" from Montevideo to Southampton, arr. 19/2

TRANSIT/ ARRIVAL MARKINGS: Registered London 20.FE.92; Birmingham FE.20.92

3d. for ½oz (1d. letter rate + 2d. registration fee, 1898-1907)

1899 REGISTERED SINGLE RATE COVER TO INDIA



RATE: 3d.;
1d. imperial
rate (1898-
1948)+2d re-
gistration fee
(1891-1921)
STAMPS:
QV 1d. (1899
printing), 2d.
(1895 printing)
POSTMARK:
Steel oblite-
rator "F.I."
(type Ob. 1/78)
REGISTRA-
TION MAR-
KING: Crown
REGISTERED,
first type
TRANSIT
MARKING:
London 26.
DE. 99

3d. for 1oz (1d. letter rate + 2d. registration fee, 1907-1921)

1909 1D. DULL COPPERY RED (x3) ON REGISTERED COVER TO LONDON



RATE: 3d.; 1d. imperial
rate (1898-1948) + 2d.
registration fee (1891-
1921)

STAMPS: KEVII 1d. dull
coppery red (x3) (1907
printing)

POSTMARK: NO.1.09
(type F.4E)

REGISTRATION LA-
BEL: Type 1

CARRIED BY: "Oropesa"
dep. 2/11

ARRIVAL MARKING:
Registered London
29.NO.09

4d. for 2oz (2d. letter rate + 2d. registration fee, 1907-1921)

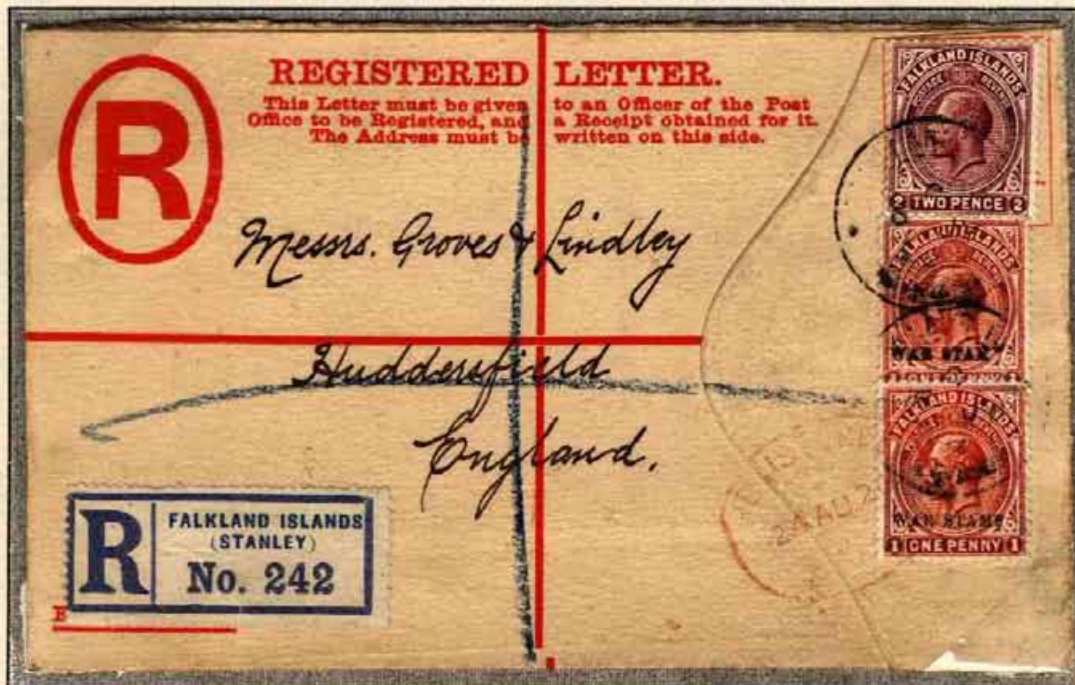
1909 DOUBLE RATE FORMULA REGISTERED ENVELOPE TO CANADA



RATE: 4d.; 2d. (2x1d.) double imperial rate (1898-1948) + 2d. registration fee (1891-1921) STAMPS: KEVII 1/2d.(x4) (1907 printing), 2d. (1904 printing) ENVELOPE: Size H (type B.3) POSTMARK: NO.27.09 (type F.4E) REGISTRATION LABEL/MARKING: Label type 2; manuscript "1693" CARRIED BY: "Oravia", dep. 30/11

4d. for 2oz (2d. letter rate + 2d. registration fee, 1907-1921)

1920 DOUBLE RATE FORMULA REGISTERED ENVELOPE TO ENGLAND
WITH PRINTING ERROR "WAR STAM"



RATE: 4d.; 2d. (2x1d.)
double imperial rate
(1898-1948) + 2d. regi-
stration fee (1891-1921)

STAMPS: KGV 2d. (1919
printing), War Stamp 1d.
(4th printing), War Stamp
1d. (4th printing) with
variety "WAR STAM"

ENVELOPE: Size F
(type B.1a)

POSTMARK: 6.JY.20
(type F.6)

REGISTRATION LA-
BEL: Type 5A

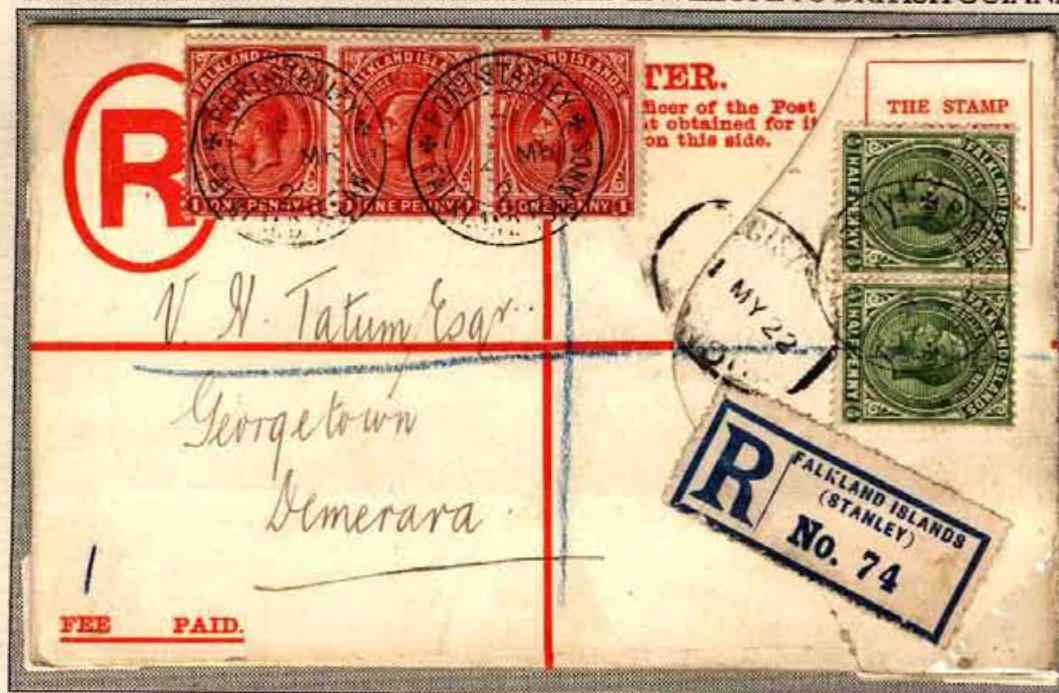
CARRIED BY: "Franz
Wilke", dep.8/7

ARRIVAL MARKING:
Registered London
24.AU.20

COMMENT: The "WAR
STAM"-variety is very
rare. Only 8 copies are
believed to have been
printed!

4d. for 1oz (1d. letter rate + 3d. registration fee, 1922-1948)

1922 SINGLE RATE FORMULA REGISTERED ENVELOPE TO BRITISH GUIANA



RATE: 4d.; 1d. imperial
rate (1898-1948) + 3d.
registration fee (1922-70)

STAMPS: KGV 1/2d.(x2)
(1921 printing), 1d.(x3)
(1920 printing)

ENVELOPE: Size F (type
B.1b)

POSTMARK: 22.MR.22
(type PS.1A)

REGISTRATION LA-
BEL: Type 5

CARRIED BY: "Oriana",
dep.31/3

TRANSIT / ARRIVAL
MARKINGS: Registered
London 1.MY.22; GPO
B.G. 24.MY.22

4d. for 1oz (1d. letter rate + 3d. registration fee, 1922-1948)

1927 SINGLE RATE REGISTERED OHMS COVER TO ENGLAND



RATE: 4d.; 1d. imperial
rate (1898-1948) + 3d.
registration fee (1922-70)

STAMPS: QV 2d.(x2)
(1923 printing)

POSTMARK: 8.JA.27
(type PS.1A)

REGISTRATION LABEL:
Type 7

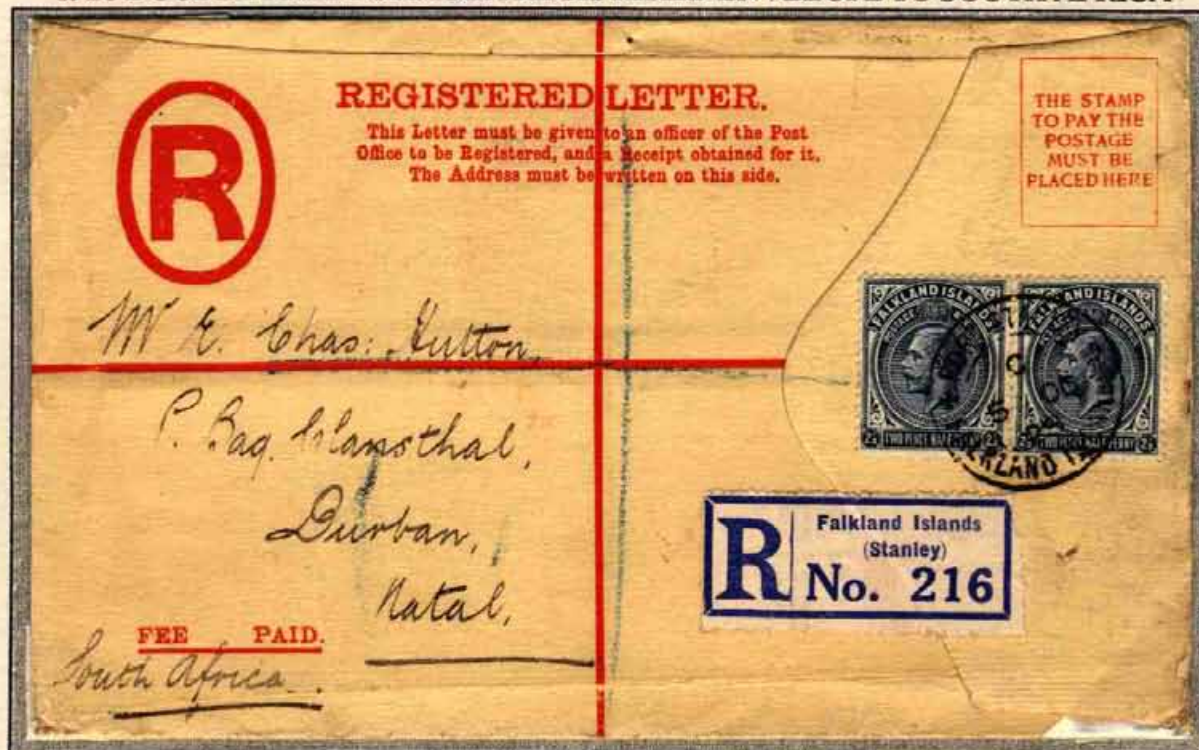
CARRIED BY: "Lobos"
dep. 12/1

ARRIVAL MARKING:
Registered Farnham Surrey
21.FE.27

COMMENT: "OHMS" in
manuscript.

5d. for 2oz (2d. letter rate + 3d. registration fee, 1922-1948)

1928 DOUBLE RATE FORMULA REGISTERED ENVELOPE TO SOUTH AFRICA



RATE: 5d.; 2d.
(2x1d.) double
imperial rate
(1898-1948) +
3d. registration
fee (1922-70)

STAMPS: KGV
2½d.(x2) (1928
printing)

POSTMARK:
5.OCT.28 (type
PS.1A)

ENVELOPE:
Size G (type
C9)

REGISTRA-
TION LABEL:
Type 6

TRANSITMAR-
KING: Regi-
stered London
17.NO.28

5d. for 2oz (2d. letter rate + 3d. registration fee, 1922-1948)

1932 "2" FOR "32" ON REGISTERED DOUBLE RATE COVER TO ENGLAND



RATE: 5d.; 2d.
(2x1d.) double imperial rate (1898-1948) + 3d. registration fee (1922-70)

STAMPS: Whale & Penguins ½d.(x2) (1929 printing), 2d.(x2) (1929 printing)

POSTMARK:
DE.27.2 (type FB.1 with "2" for "32")

REGISTRATION LABEL: Type 7A

6d. for 3oz (3d. letter rate + 3d. registration fee, 1922-1948)

1933 TRIPLE RATE FORMULA REGISTERED ENVELOPE TO ANTIGUA



RATE: 6d.; 3d.
(3x1d.) triple
imperial rate
(1898-1948) +
3d. registration
fee (1922-70)

STAMPS: Cente-
nary 1933 1/2d.,
1 1/2d., 4d.

ENVELOPE:
Size G (type D9)

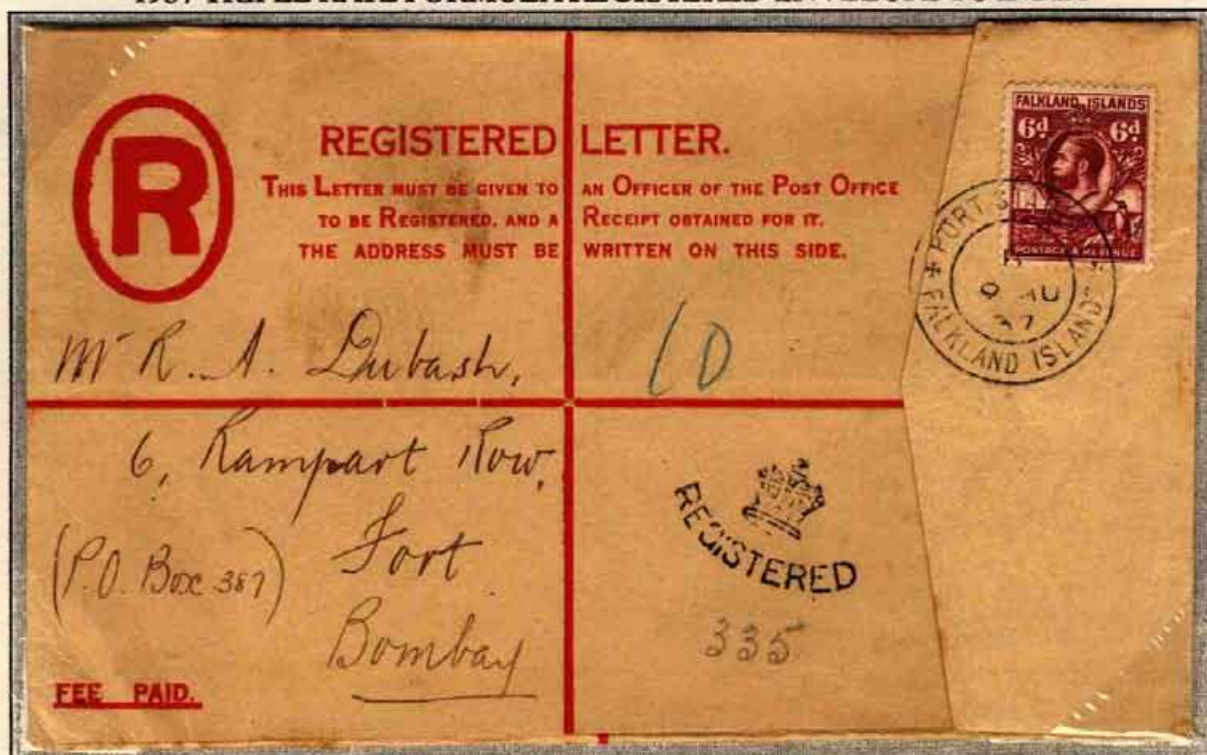
POSTMARK:
30.DE.33 (type
PS.1B)

REGISTRATION
LABEL: Type
5D

ARRIVAL MAR-
KINGS: St Johns
Antigua FE.14.34,
Bendals FE.17.34

6d. for 3oz (3d. letter rate + 3d. registration fee, 1922-1948)

1937 TRIPLE RATE FORMULA REGISTERED ENVELOPE TO INDIA



RATE: 6d.; 3d.
(3x1d.) triple
imperial rate
(1898-1948) +
3d. registration
fee (1922-70)

STAMP: Wha-
le & Penguins
6d. (1936 prin-
ting)

POSTMARK:
9.AU.37 (type
PS.2C)

ENVELOPE:
Size G (type
F.1)

REGISTRA-
TION MAR-
KINGS: Crown
REGISTERED
first type; ma-
nuscript "335"
and "10"

FOREIGN COUNTRIES

LETTERS

The foreign postal rates prior to April 1879 were the postal rates to Great Britain plus the GPO rate from Great Britain to the destination; many different rates were in force.

PRE-STAMP PERIOD:

1872 (?)	4d. per ½oz. to Montevideo (3K) one example shown
1877 (?)	1/1 per ½oz. to USA (one example known) one example shown

STAMP PERIOD (from 19 June 1878):

1878 (19 June)	various rates (no examples known)
1879 (1 April) UPU	4d. per ½oz. (5K) one example shown 8d. for 1oz. (one example known) one example shown
1891 (1 January)	4d. per ½oz. (rate unchanged) two examples shown 1/- for 1½oz., one example shown 1/4 for 2oz., one example shown
1898 (25 December)	2½d. per ½oz., one example shown
1907 (1 October)	2½d. for 1oz. (+ 1½d. per additional oz.) one example shown
1922 (1 January)	3d. for 1oz. (+ 1½d. per additional oz.) two examples shown 6d. for 3oz., one example shown
1926 (1 January)	2½d. for 1oz. (+ 1½d. per additional oz.) two examples shown 4d. for 2oz., one example shown
[1940 (1 September)	3d. for 1oz. (+ 2d. per additional oz.)]

4d. for ½oz (1872?)

1872 BLACK FRANK COVER TO URUGUAY



RATE: Manuscript "4"; 4d. rate to Uruguay; charged "10" centavos for delivery in Montevideo

POSTMARKS: The Black Frank, FALKLAND PAID ISLANDS; JA.2.1872 (type F.1)

CARRIED BY: "Foam", dep. 2/1, arr. Montevideo 13/1.

COMMENT: THERE ARE ONLY 6 KNOWN Black Frank covers addressed outside Great Britain.

1/1 for ½oz (6d. to England + 7d. GPO rate)

1877 RED FRANK COVER TO THE UNITED STATES



RATE: Manuscript "1/1"; 6d. imperial rate (1858-79) + 7d. G.P.O. rate from Great Britain to the United States

POSTMARKS: The Red Frank, FALKLAND PAID ISLANDS; MY.15.1877 (type F.1)

CARRIED BY: "Black Hawk", dep. 16/5; "Sorata", dep. Montevideo 23/5, arr. Bordeaux 17/6

TRANSIT/ARRIVAL MARKINGS: London Paid 18.JU.77, New York Paid All Jun.29

COMMENT: THIS IS THE ONLY KNOWN RED FRANK COVER ADDRESSED OUTSIDE ENGLAND.

4d. for ½oz (first period, 1879-1890)

1882 SINGLE RATE COVER TO CHILE



RATE: 4d. foreign rate (1879-98)

STAMP: QV 4d. no wmk 1879

POSTMARK: F.I. steel obliterator (Ob.1/78); MK.25.1882 (type F.1)

CARRIED BY: "Uarda", dep. 25/3 for Punta Arenas and the West Coast, arr. Valparaiso 7/4

TRANSIT / ARRIVAL MARKINGS: Valparaiso 7.ABR.82; Santiago 8.ABR.82

COMMENT: THIS IS THE ONLY KNOWN cover with the first 4d. stamp used to a foreign country. The letter was sent by Bishop Stirling and is dated "Stanley 24/3/1882" and signed "Waite H Falkland Islands". The letter concerns the Bible Society of Santiago. The original stamp has been removed and has been replaced with another similar 4d. 1879.

8d. for 1oz (first period, 1879-1890)

1889 DOUBLE RATE COVER TO SWEDEN



RATE: 8d.(2x4d.) double foreign rate (1879-98) STAMPS: QV 4d.(x2) (1887 printing)
POSTMARKS: Cork obliterator "Small Pins" (type Ob.2/88); MY.22.1889 (type F.1)
CARRIED BY: "Karnak", dep. 24/5; "Heliades" from Montevideo to Liverpool, arr. 28/6
TRANSIT / ARRIVAL MARKINGS: Liverpool Ship JU.28.89; Pkxp No.62 30.6.1889

4d. for ½oz (second period, 1891-1898)

1891 SINGLE RATE COVER TO THE UNITED STATES



RATE: 4d. foreign rate (1879-98)

STAMPS: QV 1d.(x3) and two bisects (April 1891 printing)

POSTMARKS: Cork obliterator "Large Squares" (type Ob.1/91); OC.28.1891 (type F.2)

CARRIED BY: "Herodot", dep. 29/10; "Britannia" from Punta Arenas to Lisbon, arr. 30/11

TRANSIT MARKING: London DE.3.91

COMMENT: THIS IS THE ONLY KNOWN cover with this combination.

4d. for ½oz (second period, 1891-1898)

1892 SINGLE RATE COVER TO THE UNITED STATES WITH THE NEW STAMPS



RATE: 4d. foreign
rate (1879-98)

STAMPS: QV
½d. (November
1891 printing),
1d. (October 1891
printing), 2½d.
(November
1891 printing)

POSTMARKS:
Steel obliterator
"F.I." (type Ob.
1/78); AP.11.1892
(type F.2)

CARRIED BY:
"Herodot", dep.
13/4

COMMENT:
THIS IS THE
EARLIEST
KNOWN cover
bearing both of
the new stamps.

1/- for 1½oz (second period, 1891-1898)

1896 TRIPLE RATE COVER TO SWEDEN



RATE: 1/- (3x 4d.) triple foreign rate (1879-98)

STAMP: QV 1/- (1895 printing)

POSTMARK: Steel obliterator "F.I." (type Ob. 1/78)

CARRIED BY: "Abydos", dep. 31/10, arr. London 2/12

ARRIVAL MARKINGS: Stockholm 4.12.1896; Utrikes Dept 4.DEC.96

1/4 for 2oz (second period, 1891-1898)

1898 QUADRUPLE RATE COVER TO SWEDEN



RATE: 16d. (4x4d.)
quadruple foreign
rate (1879-98)

STAMPS: QV 1/-
(1878 printing),
4d. (1895 printing)

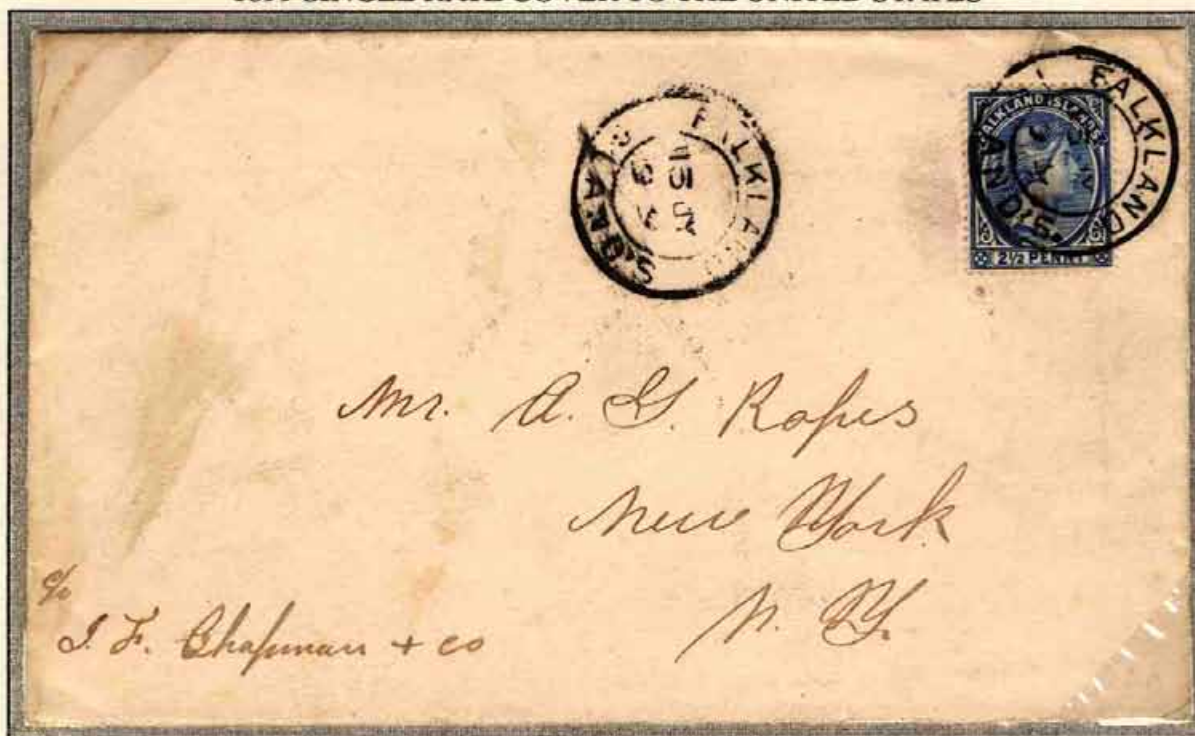
POSTMARK:
DE.23.97 (type F.1)

CARRIED BY:
"Ramses", dep.
24/12, arr. London
1/2

TRANSIT/ARRI-
VAL MARKINGS:
London FE.1.98;
Stockholm 3.2.98

2½d. for ½oz (1898-1907)

1899 SINGLE RATE COVER TO THE UNITED STATES



RATE: 2½d.
foreign rate
(1898-1921)

STAMP: QV
2½d. (1898
printing)

POSTMARK:
13.JY.9 9 (type
F.2 with year
abbreviated to
two figures)

CARRIED BY:
"Hathor", dep.
16/7

ARRIVAL
MARKING:
N.Y. 30.8.99

2½d. for ½oz (1898-1907)

1902 SINGLE RATE COVER TO SWITZERLAND



RATE: 2½d. foreign rate
(1898-1921)

STATIONERY / STAMPS:
QV 1d. envelope (type E1),
½d. (1902 printing), 1d.
(1899 printing)

POSTMARK: MY.28.02
(type F.4A)

CARRIED BY: "Oropesa",
dep. 29/5

ARRIVAL MARKING:
Basel 25.VI.02

2½d. for 1oz (1907-1921)

1909 THE MANUSCRIPT POSTMARK ON COVER FROM NEW ISLAND TO SWEDEN



RATE: 2½d. foreign rate (1898-1921) STAMP: KEVII 2½d. (1904 printing)

POSTMARK: "NEW IS 31.8.09" in manuscript (type N.1)

CARRIED BY: "Swona" from New Island to Stanley, arr. 1/9; "Orcoma", dep. 8/9

COMMENT: THERE ARE ONLY THREE KNOWN covers or cards with this postmark.

2½d. for 1oz (1907-1921)

1918 SINGLE RATE COVER TO HOLLAND



RATE: 2½d. foreign rate
(1898-1921)

STAMPS: KGV ½d.
(x5) (1912 printing)

POSTMARK: NO.22.18
(type PS.1A)

CARRIED BY: "H.M.S.
Newcastle", dep. 22/11

ARRIVAL MARKING:
Rotterdam 2.1.19

COMMENT: The cover
was sent by the Estate
Louis Williams.

3d. for 1oz (1922-1925)

1922 NON-REGISTERED FORMULA REGISTERED ENVELOPE TO THE USA



RATE: 3d. foreign rate
(1922-25)

STAMPS: KGV ½d.
(1921 printing), 2½d.
(1921 printing)

ENVELOPE: Size F (type
B.1b)

POSTMARK: 11.MR.22
(type PS.1A)

CARRIED BY: "Magel-
lan", dep.17/3

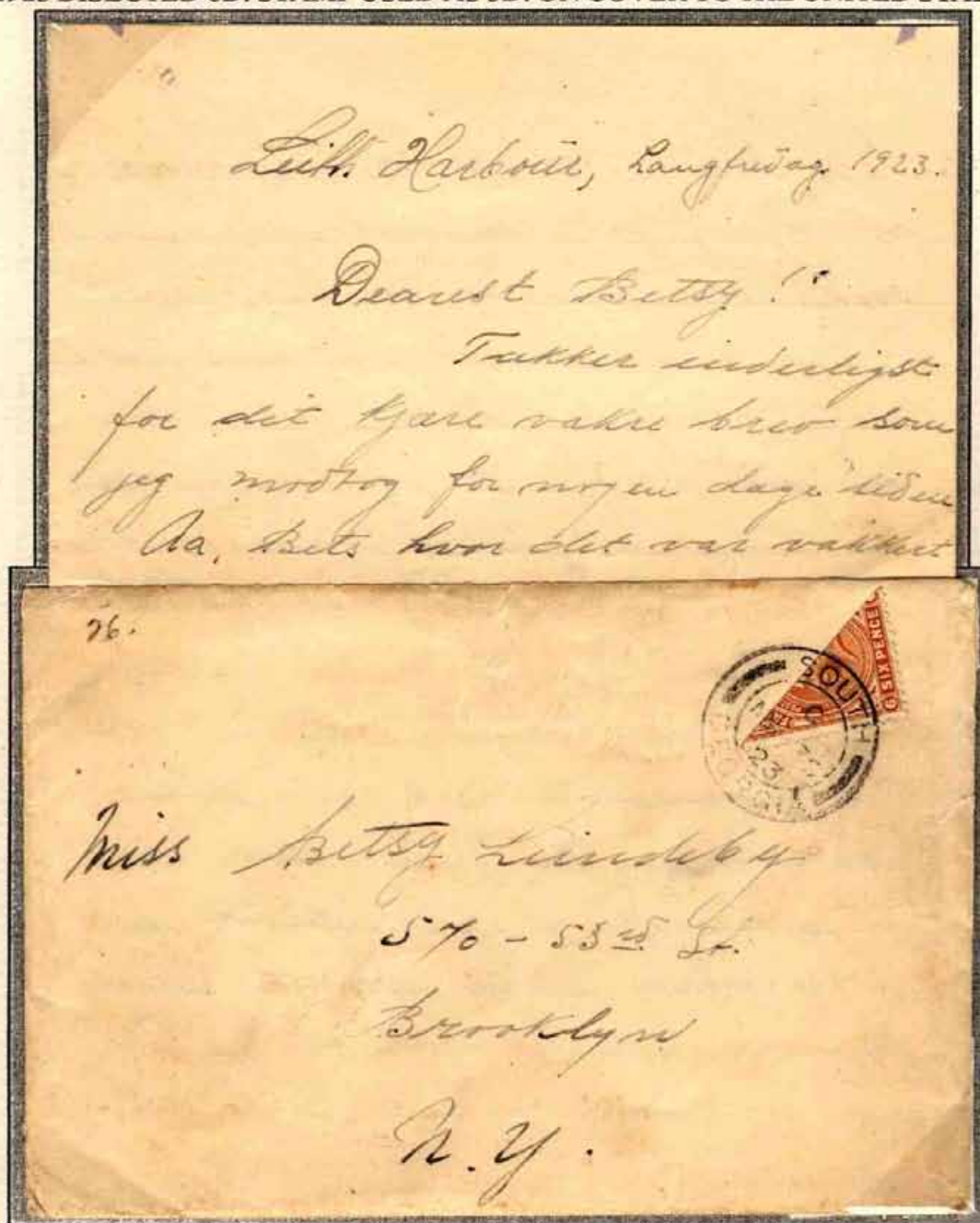
REGISTRATION MAR-
KINGS: Posted out of
Course; registration label
Liverpool 147; stamped
number "60712"

ARRIVAL MARKINGS:
New York 24.4.1922

COMMENT: The cover
was sent non-registered as
intended and found among
ordinary mail in Liver-
pool. There it was stamped
"Posted out of Course" and
a registration label was
added and it continued as a
registered item.

3d. for 1oz (1922-1925)

1923 BISECTED 6D. STAMP USED AS 3D. ON COVER TO THE UNITED STATES



RATE: 3d. foreign rate (1922-25)

STAMP: KGV 6d. bisected and used as 3d. (1919 printing)

POSTMARK: MR.30.23 (type SG.1)

CARRIED BY: "Elvenes", dep. 30/3, bound for Buenos Aires

COMMENT: THERE ARE ONLY TWO KNOWN examples of bisected 6d. stamps during this emergency, both postmarked on 30 March 1923.

The letter is headed "Leith Harbour, Good Friday 1923" and it was sent by a member of the whaling community there.

6d. for 3oz (1922-1925)

1925 TRIPLE RATE COVER TO NORWAY VIA STANLEY



RATE: 6d. (3d.
+ 1½d. + 1½d.)
triple foreign
rate (1922-25)

STAMPS: KGV
1d.(x6) (1924
printing)

POSTMARK:
JA.30.25 (ty-
pe SS.2)

TRANSIT
MARKING:
Port Stanley
FE.16.25 (type
PS.1B)

2½d. for 1oz (1926-1940)

1928 PROVISIONAL 2½D. ON WHALING COVER TO NORWAY



STAMP: 1928
"2½D" on 2d.
surcharge

POSTMARK:
7.FE.28 (type
SG.1)

CARRIED BY:
"Albuera", dep.
8/2 for Buenos
Aires

ARRIVAL MAR-
KING: Sande-
fjord 15.III.28

COMMENT: The
letter is headed
"Leith Harbour
7/2-28" and men-
tions that "the
whole island has
run short of
stamps but only a
few have been
printed over".

2½d. for 1oz (1926-1940)

1933 TAXED SINGLE RATE COVER TO ARGENTINA



RATE: 2½d. foreign rate (1926-40), fully paid but taxed by the Argentines

STAMPS: Centenary 1933 ½d., 2d.

POSTMARK: 26.SP.33 (type PS.1A)

CARRIED BY: "Lafonia" dep. 28/9

TAX MARKING: A COBRAR
\$0.50 4.OCT 33 (postage due 50c.)

ARRIVAL MARKING: Clasificaciónes Cargo 4.OCT.33

4d. for 2oz (1926-1940)

1937 DOUBLE RATE COVER TO THE UNITED STATES



RATE: 4d. (2½d. + 1½d.)
double foreign rate
(1926-40)

STAMPS: Whale & Penguins ½d. (1929 printing), 1d. (1929 printing), 2½d.

POSTMARK: FE.17.37
(type PS.2C)

CARRIED BY: "Lafonia"
dep. 28/2

ARRIVAL MARKING:
409 W.F.H.

FOREIGN COUNTRIES

REGISTERED LETTERS

The possibility to register mail from the Falkland Islands was established on 1 June 1862. Initially this service was only available to Great Britain and the registration fee was 6d. This was reduced to 4d. in 1866 and 2d. in 1879.

PRE-STAMP PERIOD:

pre June 1878 **Fees variable (no examples known)**

STAMP PERIOD (from 19 June 1878):

1878 (19 June)	Fees variable (one example known) Total rate 12d. to Belgium (one example known) one example shown
1879 (1 April) UPU	Fee 4d. (two examples known) Total rate 8d. for ½oz. (one example known) Total rate 1/- for 1oz. (one example known) one example shown
1891 (1 January)	Fee 2d. Total rate 6d. for ½oz., two examples shown Total rate 10d. for 1oz., one example shown
1898 (25 December)	Total rate 4½d. for ½oz., one example shown Total rate 7d. for 1oz., two examples shown
1907 (1 October)	Total rate 4½d. for 1oz., one example shown Total rate 6d. for 2oz., two examples shown Total rate 7½d. for 3oz., one example shown
1922 (1 January)	Fee 3d. Total rate 6d. for 1oz., one example shown Total rate 7½d. for 2oz., one example shown
1926 (1 January)	Total rate 5½d. for 1oz., two examples shown Total rate 7d. for 2oz., one example shown

1/- for ½oz (8d. letter rate + 4d. registration fee, 1878-1879)

1878 REGISTERED COVER TO BELGIUM -
THE EARLIEST KNOWN COVER WITH FALKLAND ISLANDS STAMPS



RATE: 12d.; 8d. rate to Belgium and France + 4d. registration fee

STAMPS: QV 6d. pair (1878 printing)

POSTMARK: Cork obliterator "Early 4x2" (type Ob.2/78)

REGISTRATION MARKING: Crown REGISTERED, first type

CARRIED BY: "Black Hawk", dep. 15/11; "Teniers", from Montevideo to Southampton, arr. 22/12

TRANSIT / ARRIVAL MARKINGS: Registered London 23.DE.78; Angleterre 24.DECE.78; Bruxelles 24.DECE.1878

COMMENT: THIS IS THE EARLIEST KNOWN COVER WITH FALKLAND ISLANDS STAMPS, sent just a few months after the issue of the first stamps! It is also the earliest known use of a cork obliterator, the only known pre-UPU cover bearing stamps (the islands joined the UPU in 1879) and the only known commercial usage of the first 6d. stamp within the correct period of its issue!

1/- for 1oz (8d. letter rate + 4d. registration fee, 1879-1890)

1890 REGISTERED DOUBLE RATE COVER TO GERMANY



RATE: 12d.; 8d.(2x
4d.) double foreign
rate (1879-98) +
4d. foreign registra-
tion fee (1879-90)

STAMPS: QV 1d.
(x2) (1887 printing);
4d. (1887 printing);
6d. (1878 printing)

POSTMARKS: Cork
obliterator "First
Bisect" (type Ob.
1/90); AU.22.1890
(type F.2)

REGISTRATION
MARKINGS: Crown
REGISTERED

CARRIED BY: "Neko",
dep. 23/8; "Sorata"
from Punta Arenas
to Lisbon, arr. 5/10

6d. for ½oz (4d. letter rate + 2d. registration fee, 1891-1898)

1891 REGISTERED SINGLE RATE O.H.M.S. COVER TO GERMANY



RATE: 6d.; 4d. foreign rate (1879-98) + 2d. registration fee (1891-1921) STAMP: QV 6d. (1878 printing)

POSTMARKS: Cork obliterator "First Bisect" (type Ob.1/90); AU.3.1891 (type F.2)

REGISTRATION MARKINGS: Crown REGISTERED, first type; manuscript "416"

6d. for ½oz (4d. letter rate + 2d. registration fee, 1891-1898)

1895 REGISTERED SINGLE RATE COVER TO THE UNITED STATES



RATE: 6d.; 4d. foreign rate (1879-98)
+ 2d. registration fee (1891-1921)

STAMPS: QV 1d.
(x6) (July 1894 printing)

POSTMARK: JU.20.
1895 (type F.2)

REGISTRATION
MARKINGS: Stamped number "12262"

CARRIED BY: "Herodot", dep. 23/6;
"Britannia" from Punta Arenas to Lisbon, arr. 24/7

TRANSIT/ARRIVAL
MARKINGS: Registered London
27.JY.95; Baltimore
AUG.4.1895

10d. for 1oz (8d. letter rate + 2d. registration fee, 1891-1898)

1895 REGISTERED DOUBLE RATE COVER TO THE UNITED STATES



RATE: 10d.; 8d. (2x4d.)
double foreign rate (1879-
98) + 2d. registration fee
(1891-1921)

STAMPS: QV ½d.(x8)
(1894 printing), 6d. (1891
printing)

POSTMARK: NO.15.1895
(type F.2)

REGISTRATION MAR-
KINGS: Crown REGISTE-
RED, first type; stamped
number "77326"

CARRIED BY: "Abydos",
dep. 30/11, arr. London 2/1

TRANSIT/ARRIVAL MAR-
KINGS: Registered London
2JA.96; Camden JAN.14.96

4½d. for ½oz (2½d. letter rate + 2d. registration fee, 1898-1907)

1900 REGISTERED SINGLE RATE COVER TO ARGENTINA



RATE: 4½d.;
2½d. foreign
rate (1898-
1921) + 2d. re-
gistration fee
(1891-1921)

STAMPS: QV
½d. (1899 prin-
ting), 4d. (1895
printing)

POSTMARK:
JU.25.00 (type
F.4B)

REGISTRATION
MARKING:
Crown REGI-
STERED, first
type

ARRIVAL MAR-
KING: Buenos
Aires 5.8.1900

7d. for 1oz (5d. letter rate + 2d. registration fee, 1898-1907)

1900 REGISTERED DOUBLE RATE O.H.M.S. COVER TO THE USA



RATE: 7d.; 5d. (2x 2½d.)
double foreign rate (1898-
1907) + 2d. registration fee
(1891-1921)

STAMPS: QV ½d. (1899
printing), 2½d. (1898
printing), 4d. (1895
printing)

POSTMARK: 4.MY.19OC
(type F.1 with variety "19"
"OC" for 1900)

REGISTRATION MAR-
KINGS: Crown REGISTE-
RED, first type; manuscript
"6"; stamped number "355"

CARRIED BY: "Neko",
dep. 4/5; "Iberia" from Punta
Arenas to Lisbon, arr. 17/6

TRANSIT / ARRIVAL
MARKINGS: Registered
London 20.JU.00; Boston
JUL.1.1900

7d. for 1oz (5d. letter rate + 2d. registration fee, 1898-1907)

1905 DOUBLE RATE FORMULA REGISTERED ENVELOPE TO GERMANY



RATE: 7d.; 5d. (2x 2½d.)
double foreign rate (1898-
1907) + 2d. registration
fee (1891-1921)

STAMPS: QV 2½d.(x2)
(1901 printing), KEVII
2d. (1904 printing)

ENVELOPE: Size F (type B.1a)

POSTMARK: JU.14.05
(type F.4A)

REGISTRATION MAR-
KINGS: Crown REGI-
STERED, first type; ma-
nuscript "4998" and "412"

CARRIED BY: "Victoria"
dep. 23/6

TRANSIT / ARRIVAL
MARKINGS: Registered
London 19.JY.05;
Schöneberg 21.7.05

4½d. for 1oz (2½d. letter rate + 2d. registration fee, 1907-1921)

1921 PROVISIONAL NEW ISLAND REGISTRATION LABEL ON COVER TO FRANCE



RATE: 4½d.; 2½d.
foreign rate (1898-
1921) + 2d. registra-
tion fee (1891-1921)

STAMPS: War
Stamps ½d. (x9)
(4th overprinting)

POSTMARK: MR.
1.21 (type SG.1)

REGISTRATION
LABEL: Type N1

TRANSIT MAR-
KING: Registered
London 13.AP.21

6d. for 2oz (4d. letter rate + 2d. registration fee, 1907-1921)

1910 REGISTERED DOUBLE RATE COVER TO AUSTRIA



RATE: 6d.; 4d. (2½d. + 1½d.) double foreign rate (1907-21) + 2d. registration fee (1891-1921)

STATIONERY / STAMPS:
QV 1d. envelope (type E1),
KEVII ½d.(x2) (1904 printing), 1d.(x2) (1904 printing), 2d. (1904 printing)

POSTMARK: OC.1.10
(type F.4E)

REGISTRATION LABEL:
Type 2

CARRIED BY: "Oropesa",
dep. 4/10

TRANSIT MARKING:
Registered London
29.OC.10

6d. for 2oz (4d. letter rate + 2d. registration fee, 1907-1921)

1913 DOUBLE RATE FORMULA REGISTERED ENVELOPE TO GERMANY WITH 2D. REDDISH PURPLE



RATE: 6d.; 4d. (2½d. + 1½d.) double foreign rate (1907-21) + 2d. registration fee (1891-1921)
 STAMPS: KEVII 2d. REDDISH PURPLE (x3) (1911 printing) ENVELOPE: Size H (type B.3)
 POSTMARK: DE.20.13 (type PS.1A) REGISTRATION LABEL: Type 4 CARRIED BY: "Orcoma", dep. 23/12
 ARRIVAL MARKING: Ulm 16.JAN.14 COMMENT: A RARE STAMP ON COVER

7½d. for 3oz (5½d. letter rate + 2d. registration fee, 1907-1921)

1912 REGISTERED TRIPLE RATE COVER TO THE UNITED STATES



RATE: 7½d.;
5½d. (2½d. + 2x
1½d.) triple fo-
reign rate (1907-
21)+2d.registration
fee (1891-1921)

STAMPS: KGV
½d. (1912 printing),
1d. (1912 printing),
6d. (1912 printing)

POSTMARK:
DE.16.12 (type
F.4E)

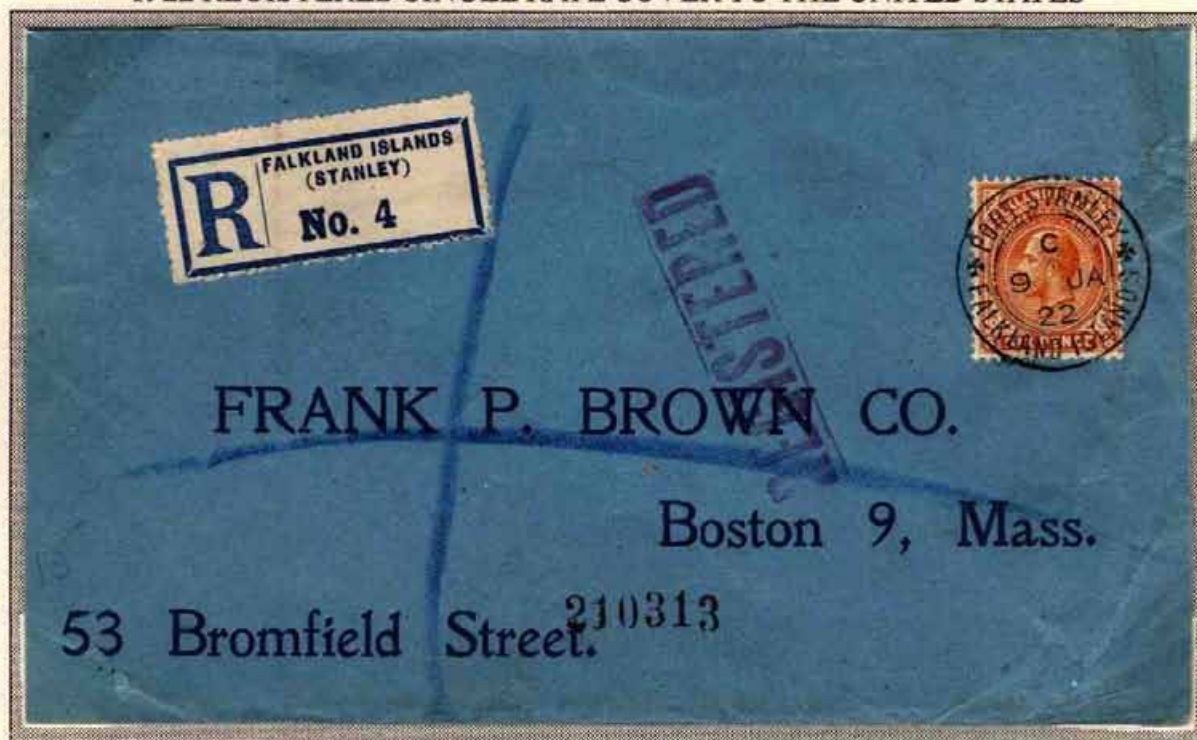
REGISTRATION
LABEL / MAR-
KINGS: Label
type 3; stamped
REGISTERED
and "5845"

CARRIED BY:
"Victoria", dep.25/12

TRANSIT / AR-
RIVAL MAR-
KINGS: Regi-
stered London
23.JA.13; New
York 2.2.1913

6d. for 1oz (3d. letter rate + 3d. registration fee, 1922-1925)

1922 REGISTERED SINGLE RATE COVER TO THE UNITED STATES



RATE: 6d.; 3d.
foreign rate
(1922-25) + 3d.
registration fee
(1922-70)

STAMP: KGV
6d. (1919 printing)

POSTMARK:
9.JA.22 (type
PS.1B)

REGISTRATION LABEL/
MARKING:
Label type 5;
stamped REGISTERED and
number "210313"

CARRIED BY:
"Orita", dep.18/1

ARRIVAL MARKING: Boston
MAR.20.1922

7½d. for 2oz (4½d. letter rate + 3d. registration fee, 1922-1925)

1924 DOUBLE RATE FORMULA REGISTERED ENVELOPE TO BELGIUM



RATE: 7½d.; 4½d. (3d. + 1½d.) double foreign rate (1922-25) + 3d. registration fee (1922-70)
STAMPS: KGV ½d. (1921 printing), 1d. (1920 printing), 6d. (1919 printing) ENVELOPE: Size H (type C.7)
POSTMARK: MR.5.24 (type PS.1B) REGISTRATION LABEL: Type 5C TRANSIT MARKING: London 15.AP.24

5½d. for 1oz (2½d. letter rate + 3d. registration fee, 1926-40)

1927 REGISTERED SINGLE RATE COVER TO FINLAND



RATE: 5½d.; 2½d. foreign
rate (1926-40) + 3d.
registration fee (1922-70)

STAMPS: KGV ½d.
(1924 printing), 2½d. (x2)
(1923 printing)

POSTMARK: 24.FE.27
(type PS.1)

REGISTRATION LA-
BEL/MARKING: Label
type 7; manuscript "3895"

CARRIED BY "Lautaro",
dep. 10/3

TRANSIT / ARRIVAL
MARKINGS: Registered
London 12.AP.27; Kuopio
16.IV.27

5½d. for 1oz (2½d. letter rate + 3d. registration fee, 1926-40)

1936 REGISTERED WITH RETURN RECEIPT SINGLE RATE COVER TO ARGENTINA



RATE: 5 1/2d.; 2 1/2d. foreign rate (1926-40) + 3d. registration fee including return receipt fee (1922-70)

STAMPS: Centenary 1933 3d., Silver Jubilee 1935 2 1/2d.

POSTMARKS: 13.JY.36 (type PS.2A); typed "REGISTERED with RETURN RECEIPT" and "CERTIFICADA con AVISO DE RETORNO"

REGISTRATION LABEL/MARKING: Label type 9; Certificados Central 58

ARRIVAL MARKING: Buenos Aires 24.JUL.36

7d. for 2oz (4d. letter rate + 3d. registration fee, 1926-40)

1933 REGISTERED DOUBLE RATE COVER TO ITALY



RATE: 7d.; 4d.
(2½d. + 1½d.)
double foreign rate
(1926-40) + 3d.
registration fee
(1922-70)

STAMPS: Cente-
nary 1933 1d., 2d.,
4d.

POSTMARK: 20.
AP.33 (type PS.1B)

REGISTRATION
LABEL / MAR-
KINGS: Label type
6B; stamped Regi-
stered; manuscript
"1521"

CARRIED BY:
"Lafonia", dep. 25/4

POST CARDS

Although there was no official postcard rate until 1885, postcards were printed in 1883 and are known to have been used in 1884. The postage for postcards was not to exceed half the single letter rate and since the letter rate was 4d. the postcard rate was set to 1½d.

To comply with UPU regulations, reply postcards were also produced. They were printed and issued during the second half of 1885. As in most countries, reply postcards were never greatly used in the Falkland Islands and correctly used replies of the first postcards are not known to exist.

GREAT BRITAIN AND THE EMPIRE

1884 (18 March)	1½d., two examples shown
1892 (1 January)	1d., two examples shown
[1966 (14 February)]	1½d.]

FOREIGN COUNTRIES

1884 (18 March)	1½d., two examples shown
1898 (25 December)	1d., two examples shown
1922 (1 January)	1½d., two examples shown
[1940 (1 September)]	2d.]

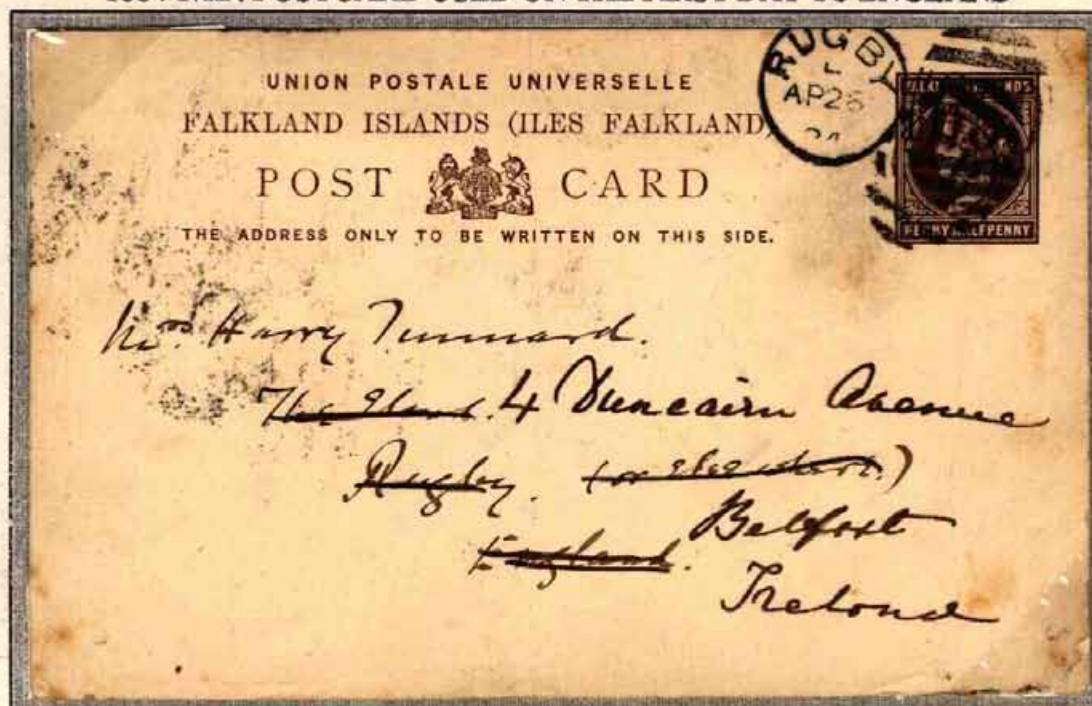
REGISTERED POST CARDS

It was, of course, possible to register a post card as well as any other form of mail, but this was done minimally in the Falkland Islands and very few examples are recorded except some philatelic examples.

1891 (1 January)	Fee 2d. Total rate 3d., two examples shown
------------------	--

1½d. (1884-1891)

1884 1½D. POSTCARD USED ON THE FIRST DAY TO ENGLAND



RATE: 1½d. imperial
postcard rate (1884-91)

STATIONERY: QV
1½d. postcard (type P1)

POSTMARK: "FB"
obliterator of the
Foreign Branch struck
at the GB Post Office
upon arrival in England

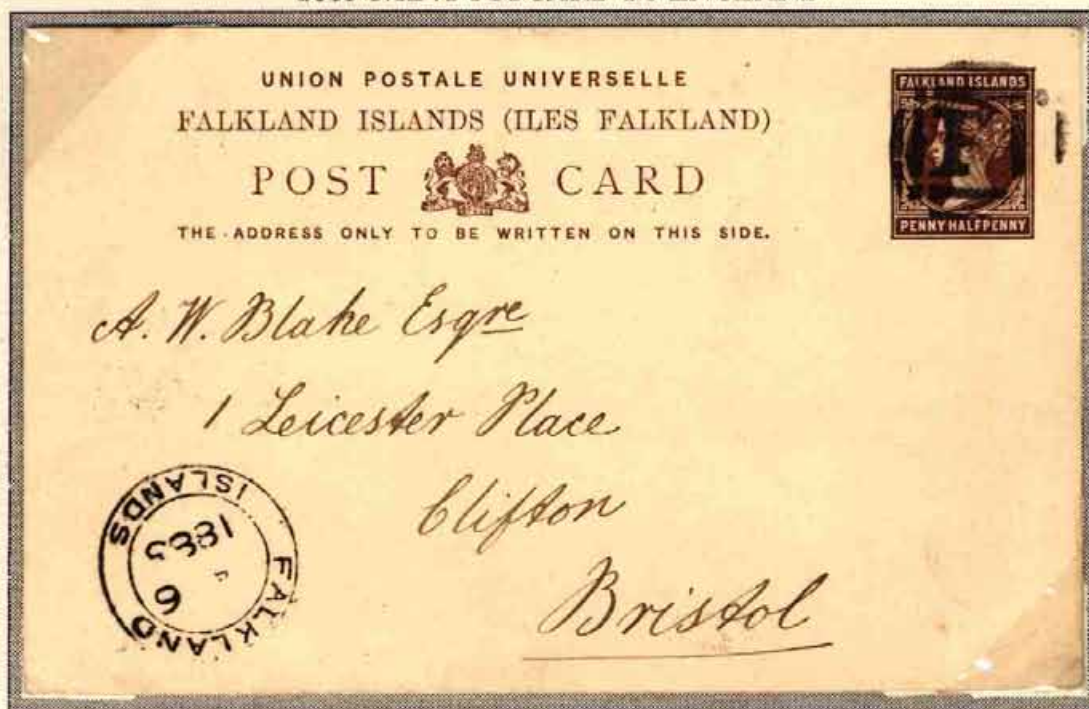
CARRIED BY: "Ibis",
dep. 18/3, arr. Dart-
mouth 27/4

TRANSIT MARKING:
Rugby AP.28.84

COMMENT: The card
is dated "Stanley 15
March 1884" and was
sent by a crew member
on board HMS Ame-
thyst. The first post-
cards had arrived on 15
February and this was
the first mail out after
the arrival.

1½d. (1884-1891)

1885 1½D. POSTCARD TO ENGLAND



RATE: 1½d. imperial
postcard rate (1884-91)

STATIONERY: QV
1½d. postcard (type P1)

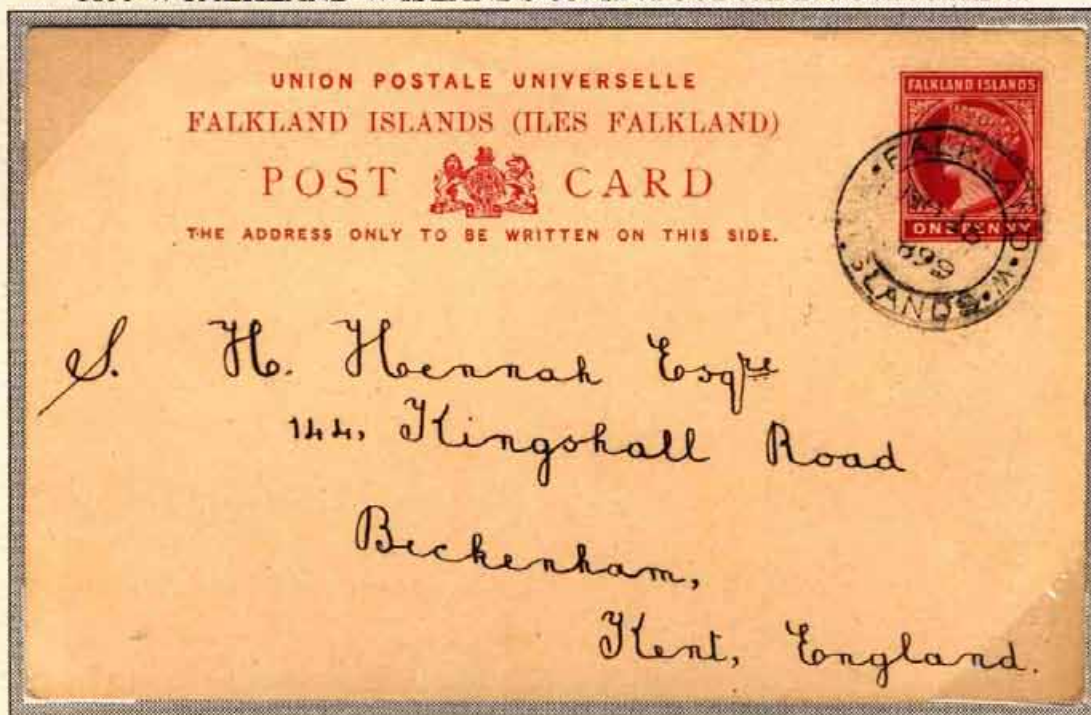
POSTMARKS: Cork
obliterator "First Cork
F.I." (type Ob.1/85);
JA.6.1885 (type F.1)

CARRIED BY: "Theben",
dep. 6/1; "Aconcagua"
from Montevideo to
Lisbon, arr. 4/2

COMMENT: THIS IS
THE SECOND. EAR-
LIEST KNOWN used
example of Falkland
Islands postal stationery.

1d. (1892-1966)

1899 W·FALKLAND·W·ISLANDS ON 1D. POSTCARD TO ENGLAND



RATE: 1d. imperial
postcard rate (1892-
1966)

STATIONERY: QV 1d.
postcard (type P3)

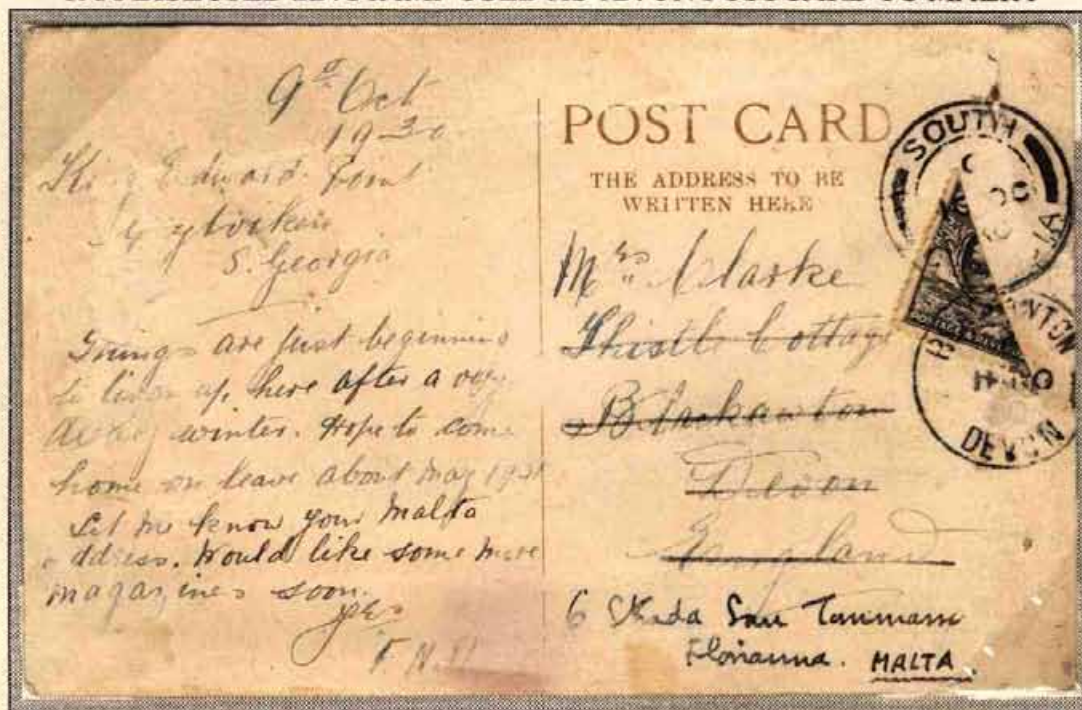
POSTMARK: NO.25.
1899 (type WF.2)

CARRIED BY: "Chan-
ce" from Fox Bay to
Stanley, arr. 4/12; "Mo-
destia", dep. 12/12, arr.
Tilbury Dock 17/1 1900

COMMENT: THERE
ARE ONLY FOUR
KNOWN covers or
cards with this postmark.

1d. (1892-1966)

1930 BISECTED 2D. STAMP USED AS 1D. ON POSTCARD TO MALTA



RATE: 1d. imperial
postcard rate (1892-
1966)

STAMP: Whale & Pen-
guins 2d. bisected and
used as 1d.

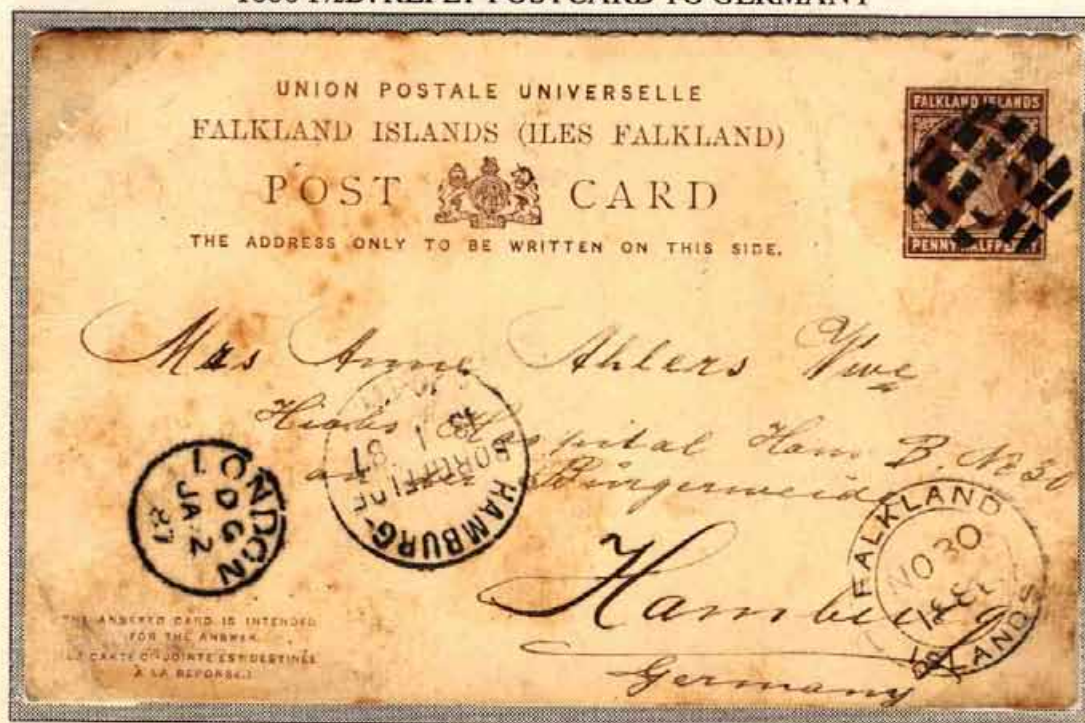
POSTMARK: 10.OC.30
(type SG.1)

TRANSIT MARKING:
Blackawton Devon
11.NO.30

COMMENT: The card is
headed "King Edward
Point 9th Oct 1930".
THERE ARE ONLY
TWO KNOWN exam-
ples of this bisect.

1½d. (1884-1898)

1886 1½D. REPLY POSTCARD TO GERMANY



RATE: 1½d. foreign
postcard rate (1884-98)

STATIONERY: QV 1½d.
reply postcard (type P2)

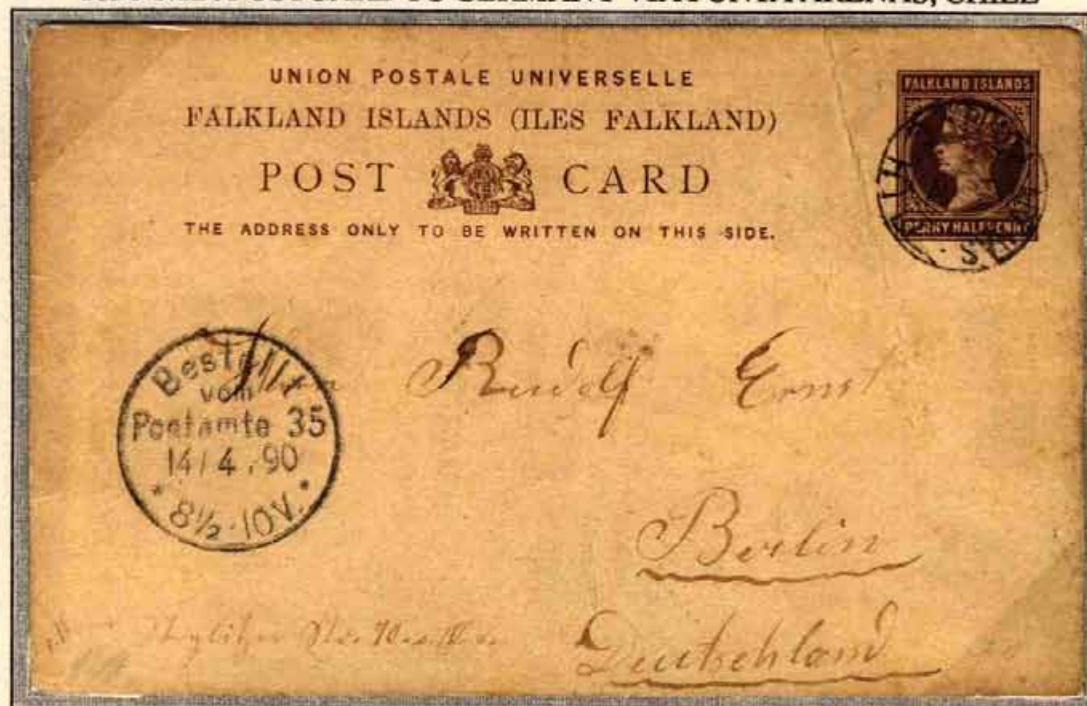
POSTMARKS: Cork
obliterator "6x4" (type
Ob.1/86); NO.30.1886
(type F.1)

CARRIED BY: "Ibis",
dep. 30/11; "Britannia"
from Montevideo to
Lisbon, arr. 7/1-87

TRANSIT / ARRIVAL
MARKINGS: London
JA.12.87; Hamburg
Borgfelde 13.1.87

1½d. (1884-1898)

1890 1½D. POSTCARD TO GERMANY VIA PUNTA ARENAS, CHILE



RATE: 1½d. foreign
postcard rate (1884-98)

STATIONERY: QV
1½d. postcard (type P.1)

POSTMARK: PUNTA
ARENAS 6.MAR.90

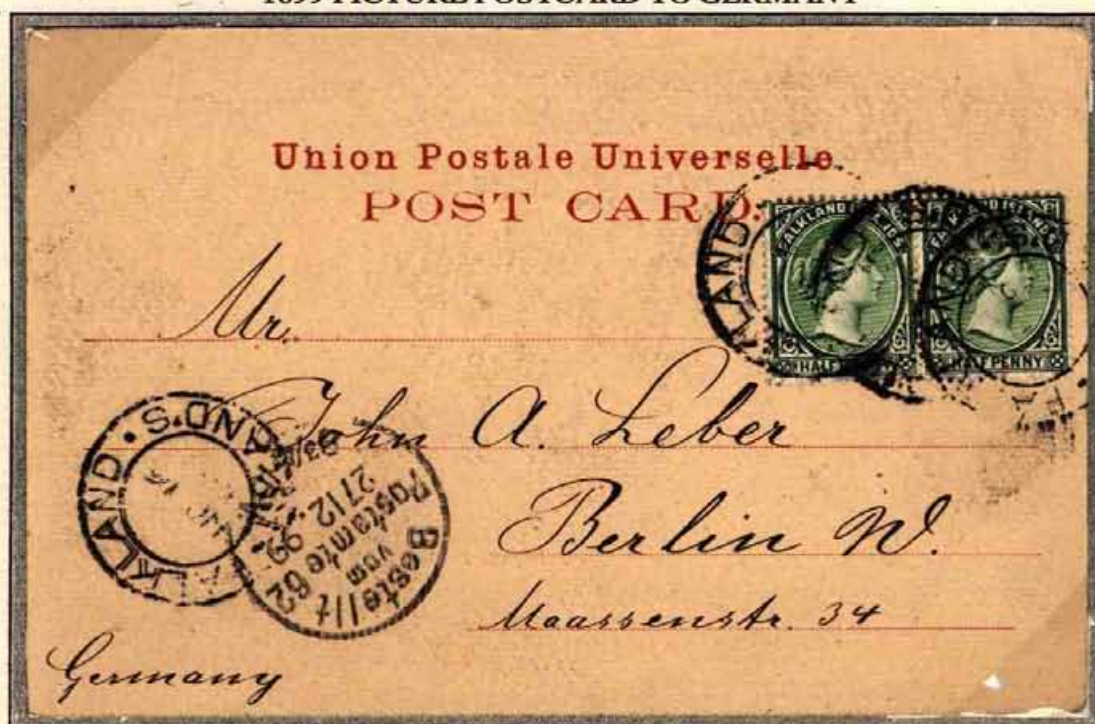
CARRIED BY: "Osiris"
dep. 22/2; "Potosi" from
Punta Arenas, dep. 26/3,
arr. Lisbon 26/3

ARRIVAL MARKING:
Bestellt vom Postamte
35 14/4.90

COMMENT: The card is
headed "Falkland Island
20.2.90" and was written
by a passenger on board
the "Osiris".

1d. (1898-1921)

1899 PICTURE POSTCARD TO GERMANY



RATE: 1d. foreign
postcard rate (1898-
1921)

STAMPS: QV ½d. (x2)
(1899 printing)

POSTMARK: NO.16.
1899 (type F.3)

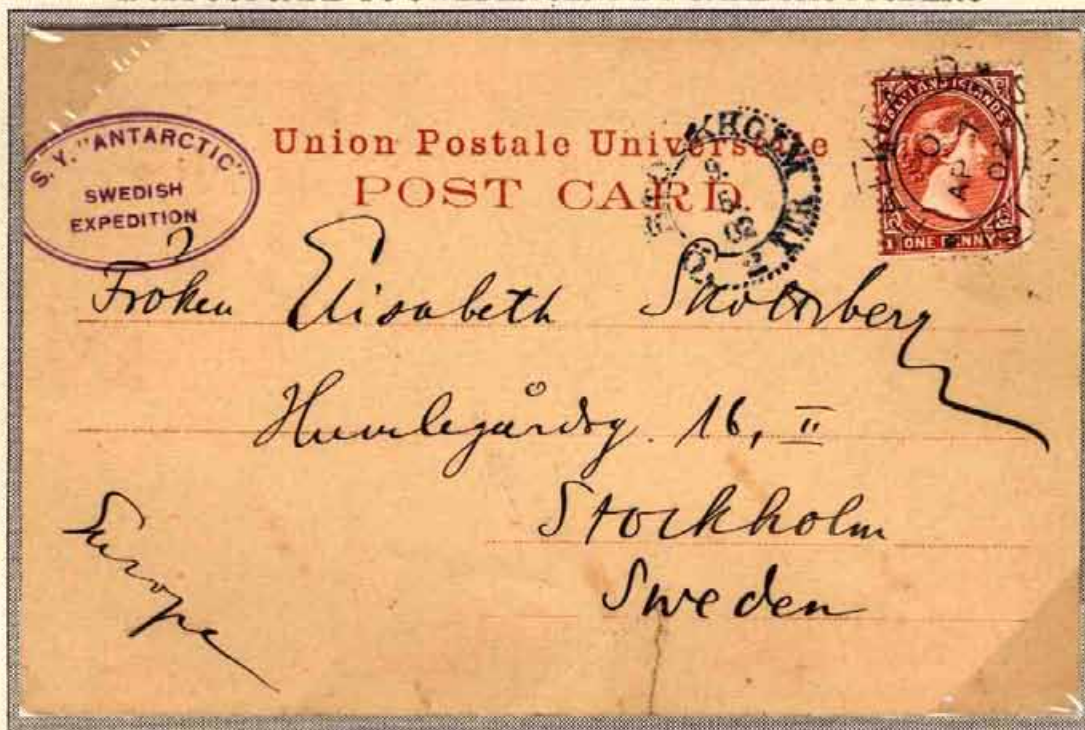
CARRIED BY: "Neko"
dep. 19/11; "Liguria"
from Punta Arenas to
Lisbon, arr. 21/12

ARRIVAL MAR-
KING: Bestellt vom
Postamt 62 27.12.99

COMMENT: THIS IS
THE EARLIEST KNOWN
picture postcard sent
from the Falkland Islands.

1d. (1898-1921)

1902 POSTCARD TO SWEDEN SENT BY CARL SKOTTSBERG



RATE: 1d. foreign post-card rate (1898-1921)

STAMP: QV 1d. (1899 printing)

POSTMARK: AP.7.02 (type F.4A)

CARRIED BY: "Lake Megantic", dep. 8/4

ARRIVAL MARKING: Stockholm 9.5.02

COMMENT: The postcard, which also bears the expedition cachet "S.Y. ANTARCTIC SWEDISH EXPEDITION", was sent by Carl Skottsberg to his sister.

1½d. (1922-1940)

1925 1D. LETTER CARD TO HAWAII



RATE: 1½d. foreign postcard rate
(1922-40)

STATIONERY/STAMP: KGV 1d.
letter card (type L1), ½d. (1921
printing)

POSTMARK: MY.5.25 (type
PS.1A)

COMMENT: A very rare postal
stationery item.

1½d. (1922-1940)

1933 TAXED POSTCARD TO ARGENTINA



RATE: 1½d. foreign
postcard rate (1922-40),
fully paid but taxed by
the Argentines

STAMPS: Centenary
1933 ½d., 1d.

POSTMARK: ? .FE.33
(type PS.1)

CARRIED BY: "Lafonia"
dep. 3/3

TAX MARKINGS: "T";
A COBRAR \$0.58 20.
MAR (postage due 58c.)

TRANSIT / ARRIVAL
MARKINGS: Buenos
Aires 16.MAR.33;
Rosario 20.MAR.33

3d. (1d. postcard rate + 2d. registration fee, 1892-1921)

1893 REGISTERED 1D. REPLY POSTCARD TO GERMANY



RATE: 3½d.; 1½d.
foreign postcard rate
(1884-98) + 2d.
registration fee (1891-
1921) but untaxed

STATIONERY/STAMPS:
QV 1d. reply postcard
(type P4), QV ½d.(x2)
(November 1891 prin-
ting), 1d. (1892 printing)

POSTMARKS: Cork
obliterator "First Small
F.I." (type Ob.3/93);
SP.11.1893 (type F.1)

REGISTRATION MAR-
KING: Crown REGIS-
TERED, first type

CARRIED BY: "Menes",
dep. 13/9, arr. London
20/10

TRANSIT / ARRIVAL
MARKINGS: Registe-
red London 20.OCT.93;
Stendal 21.10.93

3d. (1d. postcard rate + 2d. registration fee, 1892-1921)

1912 REGISTERED POSTCARD TO RUSSIA



RATE: 3d.; 1d. foreign
postcard rate (1898-
1921) + 2d. registration
fee (1891-1921)

STAMPS: KGV 1d.(x3)
(1912 printing)

POSTMARK:
NO.25.12 (type F.4C) in
brown

REGISTRATION LA-
BEL / MARKINGS:
Label type 3 ; manu-
script "91"

CARRIED BY: "Oro-
pesa", dep. 27/11

TRANSIT / ARRIVAL
MARKINGS: Registe-
red London 23.DE.12;
Riga 13.12.12 (Julian)

COMMENT: The card
was sent by a Russian
doctor who had been on
board the S.S. "Oravia"
when she was wrecked
off Stanley on 12/11.

PRINTED MATTERS

The 1d. printed matter rate, introduced for books and printed papers at 1d. each in 1856 and modified to 1d. per 4 ounces in 1858, remained in force up to 1898 when it was altered to ½d. per 2 ounces.

From 1879 the printed matter rate to foreign countries became the same as to Great Britain and the Empire, a fact which wasn't altered until 1953. Printed matters from the Falklands are rare.

WORLDWIDE

1858 (25 June)	1d. per 4 oz., two examples shown ½d. newspaper rate (?), one example shown
1898 (25 December)	½d. per 2oz., two examples shown 1d. for 4oz., one example shown
[1953 / 1966	2d. for 2oz. (foreign) / 1½d. per 2oz. (GB+Empire)]

REGISTERED PRINTED MATTERS

It was, of course, possible to register printed matters as well as any other form of mail, but this was done minimally in the Falkland Islands and very few examples are recorded.

1898 (25 December)	Fee 2d. Total rate 3d. for 4oz., one example shown
1922 (1 January)	Fee 3d. Total rate 3½d. for 2oz., one example shown



BOOKS, &c.,
FOR THE
Falkland Islands, Gambia, Labuan,
AND
Vancouver's Island.

On the 1st July next, and thenceforward,
the provisions of the Colonial Book Post
will be extended to Books transmitted
between the United Kingdom and the
following British Colonies, viz.:—

<i>Colony.</i>	<i>How Conveyed.</i>
Falkland Islands	By Packet.
Gambia	
Vancouver's Island	By Private Ship.
Labuan	

Upon Book Packets addressed to these
Colonies, the rates will be as follows—

For a Packet not exceeding $\frac{1}{2}$ lb. in weight	s.	d.
„ „ above $\frac{1}{2}$ lb. and not exceeding 1 lb.	0	6
„ „ „ 1 lb. „ „ 2 lbs.	1	0
„ „ „ 1 lb. „ „ 2 lbs.	2	0

and so on, increasing One Shilling for
every additional pound or fraction of a
pound.

The Postage must, in all cases, *be paid*
in advance by means of Postage Stamps.

By Command of the Postmaster-General,

GENERAL POST OFFICE,
19th June, 1857.

ROWLAND HILL,
Secretary.

1d. for 4oz (1858-1898)

1891 PRINTED PAPER WRAPPER TO LONDON



RATE: 1d. printed paper rate (1858-98)

STAMPS: QV bisected 1d. (x2) (1887 printing)

POSTMARKS: Cork obliterator "First Bisect" (type Ob.1/90); JY.11.1891 (type F.2)

CARRIED BY: "Herodot", dep. 12/7

ARRIVAL MARKING: London AU.11.91

COMMENT: THERE ARE ONLY TWO KNOWN wrappers with bisects.

1d. for 4oz (1858-1898)

1895 PRINTED PAPER WRAPPER TO THE ISLE OF WIGHT, ENGLAND



RATE: 1d. printed paper rate (1858-98)
POSTMARK: DE. 11. 1895 (type F.1)

STAMP: QV 1d. (July 1894 printing)
CARRIED BY: "H.M.S. Barracouta", dep. 11/12

½d. newspaper rate? (1891-1898?)

1893 PRINTED PAPER WRAPPER TO ENGLAND



RATE: 1d. printed paper rate (1858-98), but untaxed

STAMP: QV ½d. (1892 printing)

POSTMARKS: Cork obliterator "Pointed Nose F.I." (type Ob.1/93), MR.12.1893 (type F.2)

CARRIED BY: "Tanis" dep. 13/3, arr. London 13/4 COMMENT: Although the rate for a printed paper was 1d. per 4oz, ½d. was accepted for this item without being taxed. It is possible that it weighed considerably less than 2oz and that the Postal Clerk thought that ½d. was enough. The rate was subsequently reduced to ½d. per 2oz in 1898.

½d. for 2oz (1898-1953)

1932 OHMS PRINTED MATTER TO USA

ON HIS MAJESTY'S SERVICE.

Mr T. L. Rice.
272 Springton Rd.
Upper Darby. Pa.

U.S.A.



↑
curly "32"
with inverted "2"

FE 14.32

PS. 1A

RATE: ½d. foreign printed matter rate (1898-1953)

STAMP: Whale & Penguins ½d. (1929 printing)

POSTMARK: FE.14.32 (PS.1A with inverted "2")

CARRIED BY: "Lafonia", dep. 17/2

COMMENT: THIS IS THE ONLY KNOWN
example of the "32 with inverted 2" on cover.

½d. for 2oz (1898-1953)

1936 PRINTED MATTER TO SWITZERLAND



RATE: ½d. foreign printed matter
rate (1898-1953)

STAMP: Whale & Penguins ½d.
(1929 printing)

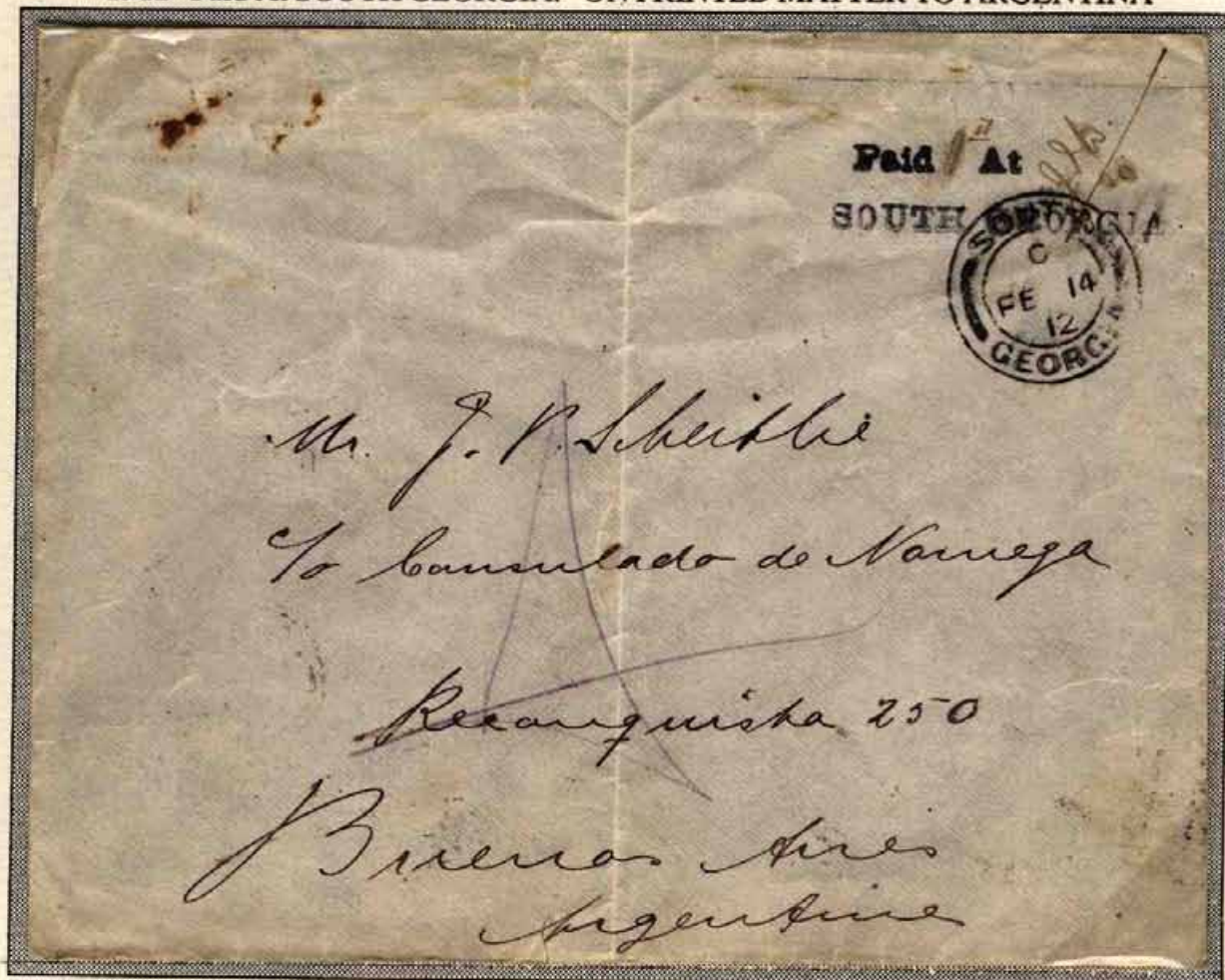
POSTMARKS: 22.MY.36 (type
PS.2A); Printed matter

CARRIED BY: "Lafonia", dep.
23/5

ARRIVAL MARKING: Schinz-
nach Dorf 19.VI.36

1d. for 4oz (1898-1953)

1912 "Paid At SOUTH GEORGIA." ON PRINTED MATTER TO ARGENTINA



RATE: 1d.
(2x½d.) double
foreign prin-
ted matter rate
(1898-1953)

POSTMARKS:
FE.14.12 (ty-
pe SG.1); "Paid
At SOUTH
GEORGIA." (ty-
pe SG.IMP.3)
with capital
"A" of "At";
manuscript "1d."
and "J.I.W."

ARRIVAL
MARKING:
Buenos Aires
FEB.26 1912

3d. for 4oz (1d. printed matter rate + 2d. registration fee, 1898-1921)

1913 REGISTERED DOUBLE RATE PRINTED MATTER TO AUSTRIA



RATE: 3d.; 1d. (2x ½d.)
double foreign printed
matter rate (1898-1953) +
2d. registration fee (1891-
1921)

STATIONERY / STAMP:
KGV 1d. envelope (type
E2a), 2d. (1912 printing)

POSTMARK: AU.3.13
(type F.4E)

REGISTRATION LABEL:
Type 3

CARRIED BY: "Oronsa",
dep. 6/8

TRANSIT / ARRIVAL
MARKINGS: Registered
London 27.SP.13; Wien
29.IX.13

3½d. for 2oz (½d. printed matter rate + 3d. registration fee, 1922-1953)

1930 MANUSCRIPT REGISTERED MARKING ON PRINTED MATTER TO THE USA



RATE: 3½d.; ½d. foreign
printed matter rate (1898-
1953) + 3d. registration
fee (1922-70)

STAMPS: Whale & Pen-
guins ½d. (1929 prin-
ting), 1d. (1929 printing),
2d.

POSTMARK: 9.AP.30
(type SG.2)

REGISTRATION MAR-
KINGS: Provisional manu-
script in red "S.G. R 156";
stamped "Registered" and
number "67751"

ARRIVAL MARKING:
Portland MAY.26.1930

AIR MAIL

The First Air Mail in the Falkland Islands was carried by catapulted aircraft from H.M.S. Exeter in 1934. This naval vessel was in Falkland waters from 18 November 1934 to 2 January 1935. Centenary stamps from 1933 were overprinted "AIR MAIL" in violet and used on the mail.

Regular internal airmail service was introduced in 1948 while external airmail was carried to the South American continent by sea for onward transmission by air.

Regular external airmail service was not introduced until 1971.

RATES TO OR FROM THE FALKLAND ISLANDS

The air mail fees were normally based on the rates between GB and South America (Uruguay or Argentina) and had to be added to the normal letter rates. It was normally very expensive to send letters by air mail during this period but it could save considerable transit time.

1931-42	4/- air mail fee, two examples shown 1/- printed matter fee, one example shown
1934	2d. inland airmail rate, one example shown

RATES IN OTHER COUNTRIES

It was also possible to prepay for airmail in either the country of departure (for mail to the Falklands) or in the country of destination (for mail from the Falklands). In most cases these examples are produced by philatelists but commercial examples exist. In any case, stamps from the country where the cover was to be carried by airmail, had to be used.

USA	1930, Air mail rate 5 cents, one example shown 1933, Air mail rate 8 cents, one example shown
Chile	1935, Air mail rate 19.30 Pesos, one example shown
Argentina	1936, external Air mail rate 6.25 Pesos, one example shown 1937, internal Air mail rate 10 centavos, one example shown



4/2½d. for ½oz (4/- Airmail fee + 2½d. letter rate, 1931-1942)

1934 AIR MAIL COVER FROM ENGLAND TO THE FALKLAND ISLANDS



RATE: 4s. 2½d.; 2½d. foreign rate +
4/- air mail rate from England to
Montevideo, Uruguay

STAMPS: Great Britain KGV 1924
1d., 1½d., 1/- (x4)

POSTMARK: BINGLEY YORKS.
23.NO.34

TRANSIT MARKINGS: Paris
24.XI.1934; Servicio Aeropostal
Europa / America del Sud AIR
FRANCE Correspondencia Tras-
portada Totalmente Por Avion;
Montevideo NOV.26.34

CARRIED BY: "Lafonia" from
Montevideo to Stanley, arr. 8/12

ARRIVAL MARKING: 8.DE.34
(type PS.1)

COMMENT: The cover is
addressed to a member of the British
Grahamland Expedition. THERE
ARE ONLY FOUR KNOWN items
in connection with this expedition.

4/3 for ½oz (4/- Airmail rate +3d. registration fee, 1931-1942)

1933 REGISTERED AIRMAIL COVER FROM SWANSEA TO STANLEY



RATE: 4s.3d.; 4s.
Airmail rate (1931-42) + 3d. registration fee

STAMPS: Great Britain KGV 1918 2s6d. + 1924-26 ½d. + 2½d. + 3d. + 5d. + 10d.

POSTMARK: SWANSEA 24.AU.33

CARRIED BY: From London by plane to Marseille, by plane to Montevideo, by "Lafonia" to Stanley, arr. 13/9

TRANSIT MARKINGS: Marseille Gare Avion 26.8.33, Montevideo 4.IX.33

COMMENT: If the letter would have been sent by seamail it would have arrived on 12/10.

1/- for ½oz (printed matter rate, 1931-1942)

1933 ZEPPELIN COVER FROM ENGLAND TO STANLEY VIA BRAZIL



RATE: 1/- printed matter
airmail rate (1931-42)

STAMPS: Great Britain
KGV 3d.(x4) 1924-26

POSTMARK: LONDON
WC 13.OCT.1933

CARRIED BY: From
London by plane to
Berlin, by special plane
to Friedrichshaven, by
Zeppelin to Rio de
Janeiro, by ship to
Montevideo, by "Lafo-
nia" to Stanley, arr. 29/11.

TRANSIT MARKINGS:
Berlin 14.10.33, Deutsche
Luftpost Anschlussflug
zur Amerikafahrt, Luft-
schiff Graf Zeppelin 50.
Ozean-Überquerung, Rio
de Janeiro 18.OUT.1933,
Montevideo NOV.2.1933

2d. for ½oz (1934)

1934 CATAPULTED AIR MAIL COVER TO PORT HOWARD, WEST FALKLAND



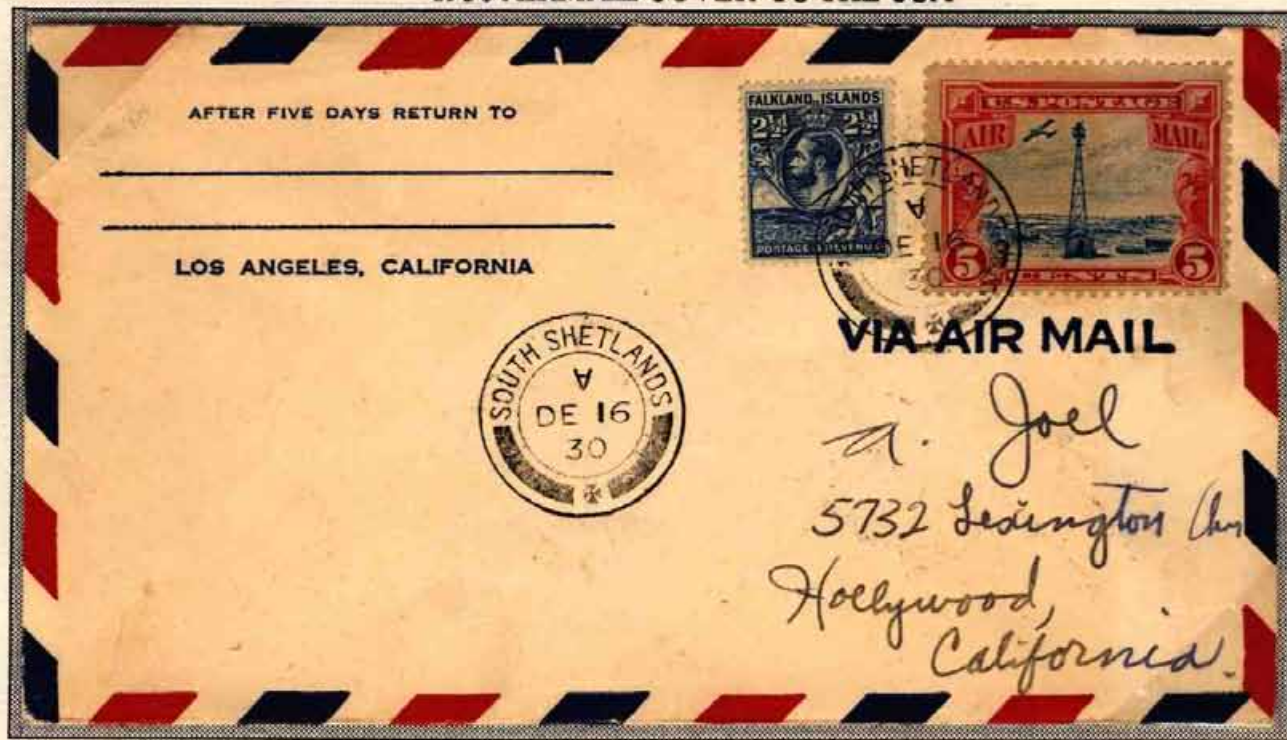
STAMP: Centenary 1933 2d. overprinted "AIR MAIL" in violet

POSTMARKS: 30.NO.34 (type PS.1A); manuscript "by 3rd Air Mail in the Falkland Islands"

COMMENT: THERE ARE ONLY THREE KNOWN covers and one piece with stamps overprinted "AIR MAIL", all postmarked on the same day.

USA 5cents Airmail fee

1930 AIRMAIL COVER TO THE USA



RATE: 2½d.
foreign rate
(1926-40) +
5c. internal US
Airmail rate

STAMPS: W&P
2½d., USA 5c.
Airmail 1928

POSTMARK:
SOUTH SHET-
LANDS A DE
16.30 (type SS.2)

TRANSIT
MARKING:
New York
FEB.25.1931

COMMENT:
The cover was
sent by sea-
mail to New
York and by Air-
mail between
New York and
California.

USA 8cents Airmail fee

1933 AIR MAIL REGISTERED DOUBLE RATE COVER TO THE UNITED STATES



RATE: 7d.; 4d.
(2½d. + 1½d.)
double foreign
rate (1926-40) +
3d. registration
fee (1922-70)
and 8cents air
mail rate from
New York to San
Francisco

STAMPS: Cen-
tenary 1933 1d.,
6d., USA Air
mail 1932 8cents

POSTMARKS:
4.NO.33 (type
SG.1); NEW
YORK 2.1.1934

REGISTRATION
LABEL: Type 5A

TRANSIT/AR-
RIVAL MAR-
KINGS: New
York 2.1.1934;
San Francisco
JAN.4.1934

Chile 19.30 Pesos Airmail fee

1935 REGISTERED AIRMAIL COVER FROM CHILE TO STANLEY



RATE: 21.80
Pesos; 19.30 P.
airmail rate +
2.50 P. regi-
stration fee

STAMPS: Chile
25c.(x2) 1928;
2P. 1934, Air-
mail 1928-32
30c., 2P. (x2),
5P.; 1934 10P.

POSTMARK:
CORREO AE-
REO MAGAL-
LANES 10.JUN
1935

REGISTRA-
TION MAR-
KING: Manu-
script "R2500"

TRANSIT
MARKING:
Montevideo
15.VI.35

COMMENT:
The cover was
carried by air-
mail to Monte-
video and then
by seamount.

Argentina 6.25 Pesos external Airmail fee

1936 REGISTERED COVER TO ARGENTINA RE-DIRECTED TO ENGLAND BY AIRMAIL



RATE: 5½d;
2½d. foreign rate
(1926-40) + 3d.
registration fee
(1922-70) and
6Pesos 25cts air
mail rate from
Argentina to
England. In Ar-
gentina "Por Avi-
on" and "Via
Condor" was
added.

STAMPS: Cente-
nary 1933 ½d.,
1d., 3d., Silver
Jubilee 1935 1d.,
ARGENTINA
1936 25c, 1P(x6)

POSTMARKS:
16.AU.36 (type
SG.2); BUENOS
AIRES 2.DIC.36

REGISTRATION
LABEL /MAR-
KINGS: Label
type SG5; Certifi-
cados Central;
manuscript "485"

ARRIVAL MAR-
KING: Didsbury
8.DE.36

Argentina 10 centavos internal Airmail fee

1937 REGISTERED AIRMAIL COVER FROM ARGENTINA TO STANLEY



RATE: 55c.; 20c. (2x10c.)
double foreign rate + 10c.
internal Airmail fee +
25c. registration fee

STAMPS: Argentina 5c.
1935 + 50c. 1936

POSTMARK: RIO
GALLEGOS 24.MAR.37

REGISTRATION LA-
BEL / MARKING: Label
R. ARGENTINA, mar-
king CERTIFICADOS
CENTRAL 54

TRANSIT MARKINGS:
Buenos Aires 2.ABR.37

COMMENT: The cover is
marked "Via aerea" and
"via Montevideo" and
was carried by Airmail
between Rio Gallegos and
Buenos Aires and then by
seamail.

INLAND MAIL

Inter-insular mail service was not introduced until June 1891 and the letter rate was 1d. per ounce up until 1966, except for a few years in the 1890's. A printed matter rate was also introduced in 1891 and this was ½d. per 2 ounces most of the time until 1966. A specific post card rate was not introduced until 1922 so one has to assume that the GB&Empire rate was used earlier.

Mail to the Dependencies (South Georgia and the South Shetlands) was also considered to be inland, and these rates were charged for mail between the Falklands and the Dependencies.

LETTERS

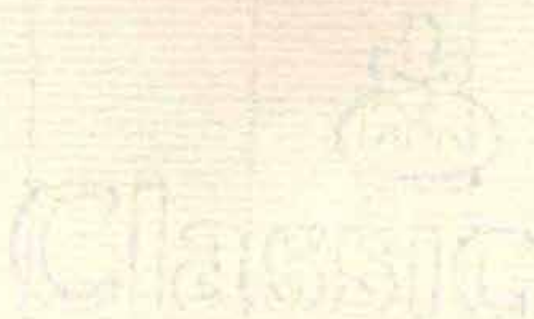
- | | |
|---------------------|---|
| 1898 (25 December) | 1d. per oz., two examples shown
3d. for 3 oz., one example shown |
| [1966 (14 February) | 2d. per oz.] |

REGISTERED LETTERS

- | | |
|--------------------|---|
| 1898 (25 December) | Fee 2d.
Total rate 3d. for 1 oz., one example shown |
| 1922 (1 January) | Fee 3d.
Total rate 4d. for 1 oz., two examples shown
Total rate 5d. for 2oz., two examples shown |

POST CARDS

- | | |
|---------------------|-------------------------|
| 1892 (1 January) | 1d., two examples shown |
| [1966 (14 February) | 1½d.] |



1d. for 1oz (1898-1966)

1899 SINGLE RATE LOCAL COVER TO STANLEY



RATE: 1d. inland rate
(1898-1966)

STAMPS: QV ½d.(x2)
(1894 printing)

POSTMARK: JU.1.99
(type F.2)

COMMENT: The cover has a manuscript note "Left till called for". There has never been any mail deliveries in Stanley; people have always had to collect their mail at the Post Office.

1d. for 1oz (1898-1966)

1926 H.M.C.S. AFTERGLOW COVER TO ROY COVE, WEST FALKLAND



RATE: 1d. inland rate (1898-1966)

STAMP: KGV 1d. (1925 printing)

POSTMARK: H.M.C.S. AFTERGLOW
* POSTED ON BOARD * 13.MAR.1926

COMMENT: The cover was sent by the
Falkland Islands Company in Stanley.

3d. for 3oz (1898-1966)

1910 "South Georgia." IMPRINT ON O.H.M.S. COVER TO STANLEY



RATE: 3d. (3x1d.) triple inland rate (1898-1966)

STAMPS: KEVII 1d. (1907 printing), 2d. (1904 printing)

POSTMARKS: FE.17.10 (type F.4D); "South Georgia." imprint (type SG.IMP.2)

COMMENT: A rare cover. It is addressed to the Governor of the Falkland Islands.

3d. for 1oz (1d. letter rate + 2d. registration fee, 1898-1921)

1921 2D. REGISTERED ENVELOPE TO ROY COVE, WEST FALKLAND



RATE: 1d. inland rate
(1898-1966) + 2d. regi-
stration fee (1891-1921)

STATIONERY / STAMP:
KGV 2d. registered enve-
lope (type R1), 1d. (1920
printing)

POSTMARK: FE.3.21
(type F.6)

REGISTRATION LA-
BEL: Type 5

COMMENT: A very rare
postal stationery item.

4d. for 1oz (1d. letter rate + 3d. registration fee, 1922-1966)

1928 REGISTERED COVER TO STANLEY, REGISTERED IN STANLEY



RATE: 1d. inland
rate (1898-1966) +
3d. registration fee
(1922-70)

STAMPS: KGV 1/2d.
(1925 printing) 1d.
(1927 printing),
2 1/2d. (1927 printing)

POSTMARK: FE.
14.28 (type SS.2)

REGISTRATION
LABEL: Type 6,
applied in Stanley

ARRIVAL MAR-
KING: 3.MR.28
(type PS.1A)

4d. for 1oz (1d. letter rate + 3d. registration fee, 1922-1966)

1935 LOCAL REGISTERED COVER FROM FOX BAY TO STANLEY



RATE: 1d. inland
rate (1898-1966) +
3d. registration fee
(1922-70)

STAMPS: Whale &
Penguins 1d.(x4)
(1929 printing)

POSTMARK: AP.
15.35 (type FB.1)

REGISTRATION
LABEL: Type 7

5d. for 2oz (2d. letter rate + 3d. registration fee, 1922-1966)

1928 REGISTERED DOUBLE RATE COVER TO STANLEY



RATE: 5d.; 2d.
(2x1d.) double
inland rate
(1898-1966) +
3d. registration
fee (1922-70)

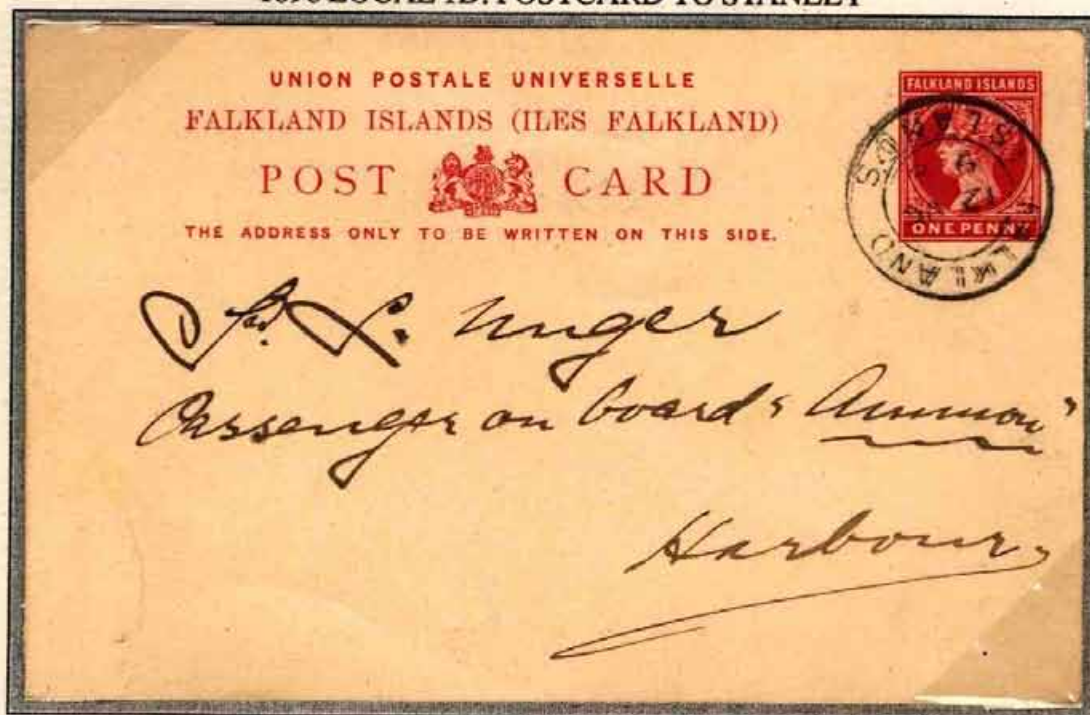
STAMPS: KGV
½d. (1925 prin-
ting), 2d. (1928
printing), 2½d.
(1927 printing)

POSTMARK:
SP.12.28 (type
SG.1)

REGISTRATION
LABEL: Type
SG2

1d. (1892-1966)

1898 LOCAL 1D. POSTCARD TO STANLEY



RATE: 1d. inland
postcard rate (1892-
1966)

STATIONERY: QV 1d.
postcard (type P.3)

POSTMARK: 12.OC.98
(type F.2)

COMMENT: The card
is addressed to S.L.
Unger, Passenger on
board "Ammon", Harbour.
The "Ammon" arrived
in Port Stanley on 8/10
and departed on 13/10.
The message on the card
is very straight forward:
"Port Stanley Oct.12/98.
Dear Unger, Expect you
for dinner, bay permit-
ting, at 6 o'clock p.m.
Sincerely yours, Davies".

1d. (1892-1966)

1912 POSTCARD FROM STANLEY TO NEW ISLAND



RATE: 1d. inland rate
(1898-1966)

STAMP: KEVII 1d.
(1907 printing)

POSTMARK: AP.30.12
(type F.5)

CARRIED BY: "Colum-
bus", dep. 2/5

ARRIVAL MARKING:
MY.11.12 (type N.2)

COMMENT: The post-
card was sent by Edward
B Binnie who had been
Postmaster at New Island
between 1910 and 1911.

OTHER RATES AND SERVICES

CONCESSIONARY MAIL

From time to time, many Soldiers were stationed throughout the British Empire and many Naval Ships visited the Falkland Islands. The high rates of postage were a real hardship to serving personnel and their families and concessionary rates were introduced as early as 1795. In 1850 the rate of 1d. was introduced for mail sent by Soldiers, Seamen and Non-commissioned Officers. In 1867 a rate of 6d. per ½oz. was introduced for Commissioned Officers letters.

All Soldier's and Seaman's mail had to be counter-signed by the Commanding Officer and the sender had to write his name and rank on the address side of the letter.

1795 - 1898
1867 - 1881

1d. Soldier's rate (**two examples known**) two examples shown
6d. Officer's rate (**two examples known**) one example shown

PARCEL POST

The Imperial Parcel Post service was extended to the Falkland Islands with effect from 1 September 1888. On average about ten times more parcels were carried to the islands than from them.

Inland Parcel Post was introduced in June 1891 together with the regular inter-island mail service.

1898 (25 December) Parcels to GB 1s.(3 lbs), 2s.(7 lbs), 3s.(11 lbs)
3/- for 1lbs., one example shown

1899 (7 September) Parcels inland 4d.(3 lbs), 8d.(7 lbs), 1s.(11 lbs)
4d. for 3lbs., one example shown

1922 (1 January) Parcels abroad 1s.9d.(3 lbs), 3s.3d.(7 lbs), 4s.6d.(11 lbs)
1/9 for 3lbs., one example shown

MAIL ENCLOSED IN PACKAGES

This must be one of the most obscure postal services in the history of the Falklands! In 1899 the Dean of the Falkland Islands had been rebuked by the Postmaster for having a package addressed to him which was found to contain four letters not prepaid for postage. When George Hurst became Postmaster in 1905 he ensured that no such evasion of the regulations would occur in mailings to his son Robert in the USA.

1898 (25 December) 1d. foreign postcard rate, two examples shown

WAR TAX

Between 1 October 1918 and 5 May 1920 a War Tax was charged on all letters sent from the Falkland Islands to Great Britain and the Empire. This amounted to 1d. for the first ounce and ½d. for each additional ounce for letters and 1/- each for parcels.

1918 (1 October) -
- 1920 (5 May)

War Tax, additional 1d. for 1oz.
+ ½d. per additional oz.
Total rate 2d. for 1oz., one example shown
Total rate 2d. for 1oz registered, two examples shown

1d. Soldier's rate (1795-1898)

1842 CONCESSIONARY LETTER TO ENGLAND SENT BY A SEAMAN ON H.M.S. EREBUS



RATE: 1d. concessionary Soldier's and Seamen's prepaid rate to Great Britain (1795-1850)

POSTMARKS: London General Post PAID 11.FE.11.1843 single ring in red; PD FE.11.1843 10FN octagonal paid marking of the London District Post in red; both used on letters prepaid in cash.

SENT BY: Manuscript "From Richard Wall, Seaman, H.M. Ship Erebus" and countersigned "E Bird, Commr, 7th Sept/42, HMS Erebus" (Edward Joseph Bird was the First Lieutenant of HMS Erebus). HMS Erebus and Terror arrived in Port Louis on 6th April 1842 and departed on 8 September, for Cape Horn. They briefly visited the Falklands again between 13 November and 17 December when they departed for "the South Pole" according to the Stanley shipping records!

CARRIED BY: "Hebe", dep. 30/11, arr. London c. 10/2 1843. The "Hebe" (a brig of 189 tons under Captain C F Anderson), which had brought Governor Moody and his party in January 1842, arrived on 8 November and was the only ship to depart from the Falklands during the second half of 1842, except for HMS Erebus and Terror.

COMMENT: The letter was sent by Richard Wall to his wife "Hannah Wall, No. 11 Davinshire Place, Woolwich, Kent, England" and is headed "H.M. Ship Erebus, Port Louis, Barkley Sound, Falkland Island, September the 5th, 1842". He mentions "We have been hear now nerly five months anxuisly looking for a letter as non of us has hard from home this long time. We ar to sail from hear on the 8th of this month for Cape Horn. This is a rather derery place to winter at. Lt Moody and his party is hear, he is Governor and there ar about thirty or forty inhabitants beside his party. There is no wood on the Island but plenty of wild cattle, gees, ducks, rabbits and a grat many birds. The 'Carisfort' brought our new bowsprit from Rio de Janeiro and a supply of bread etc. Write an answer to this and direct it for the Cape of Good Hope, where if all is well I hope to be next May."

THIS IS THE EARLIEST KNOWN CONCESSIONARY LETTER FROM THE FALKLAND ISLANDS AND ONE OF THE EARLIEST KNOWN LETTERS FROM AN ANTARCTIC EXPEDITION.

1d. Soldier's rate (1795-1898)

1893 1D. SEAMAN'S RATE ON COVER FROM STANLEY TO ENGLAND



RATE: 1d. concessionary Soldier's and Seamen's rate to Great Britain (1850-1898)

STAMP: Great Britain QV 1d. 1881

POSTMARK: F.B. obliterator applied by the Foreign Branch Post Office in the UK.

SENT BY: Manuscript "From W Crocker, Stoker, HMS Sirius, Port Stanley, S. America" and counter-signed by the "Commanding Officer". HMS Sirius arrived in Stanley on 8 January 1893 and departed on 17 March bound for Montevideo.

CARRIED BY: "Tanis", dep. 13/3, arr. London 13/4



LETTERS FOR OFFICERS

Serving on Board Ships of War on Colonial Stations.

ON the 1st November next, and thenceforward, the regulations under which Letters addressed to Officers serving on board any of Her Majesty's Ships on a Colonial Station may be forwarded at the reduced British postage of sixpence the single rate, will be so far modified, that such reduced rate will be chargeable only when the full postage is paid in advance.

In all cases where such Letters are posted unpaid, they will be chargeable, on delivery, with a fine of sixpence, in addition to the postage, and when they are posted insufficiently paid (by means of postage stamps) they will be chargeable, on delivery, with a fine of sixpence in addition to the deficient postage.

The same regulations will apply equally to Letters from Officers serving on board Her Majesty's Ships in the Colonies when addressed to this Country.

By Command of the Postmaster-General.

GENERAL POST OFFICE,
17th October, 1864.

Printed by W. P. GRAYSON, 5, Langley Street, Long Acre, London, W.C.

6d. Officer's rate (1867-1881)

1881 6D. OFFICER'S RATE ON COVER FROM STANLEY TO ENGLAND



RATE: 6d. concessionary Officer's rate to Great Britain (1867-1881)

STAMP: Great Britain QV 6d. 1880

POSTMARK: B10 obliterator applied in Perranarworthal, Devon (close to Falmouth), upon arrival in England.

SENT BY: Lieutenant Frank A Halloran, HMS Cleopatra, to his wife. HMS Cleopatra, a corvette of 2380 tons, arrived in Stanley on 24 January 1881 from Valparaiso and departed soon afterwards possibly bound for Simonstown, South Africa.

ARRIVAL MARKING: Exeter MR.18.81

COMMENT: THERE ARE ONLY TWO KNOWN Officer's letters from the Falkland Islands. The cover has a manuscript marking "Falkland" on the front and "HMS CLEOPATRA" printed on the flap. The cover is repaired.

PARCEL



POST.

WAY BILL

Of PARCEL MAILS from PORT STANLEY to LONDON.

No. and Kind of Receptacles	Distinguishing Marks.

Embarked on board the Steamer _____

on the _____ day of _____ 18__

Received the above Mails,

Commander of Steamer or his Deputy.

Received the above Mails at _____

on the _____ day of _____ 18__, at _____ .m.

Postmaster of Port of Arrival.

Mails forwarded to Mount Pleasant Parcel Dépôt, London, at _____ .m.

Received the above Mails,

Superintendent.

3/- for 11 lbs (1898-1922)

1902 PARCEL WRAPPING TO ENGLAND



RATE: 3/- parcel rate to the UK for a parcel between 7 lbs. and 11 lbs. (1898-1922)

STAMPS: QV 2½d. (1901 printing), 6d.(x2) (1896 printing), 9d. (1896 printing), 1/- (1896 printing). A ½d. stamp must have been affixed elsewhere on the parcel.

POSTMARK: 22.JU.02 (type F.4A)

CARRIED BY: "Orellana", dep. 29/6

COMMENT: THIS IS THE EARLIEST KNOWN example of parcel post from the Falkland Islands.

4d. for 3 lbs (1899-1922)

1906 LOCAL TIE-ON PARCEL LABEL TO STANLEY



RATE: 4d. inland parcel rate up to 3 lbs. (1899-1922)

STAMPS: QV 1d.(x4) (1902 printing)

POSTMARK: SP.11.06 (type F.4B)

CARRIED BY: "Consort", from Port Howard to Stanley, arr. 11/9

COMMENT: The label is addressed to the West Store in Stanley and was sent from a farm outside of Stanley.

1/9 for 3 lbs (1922-1951)

1933 REGISTERED PARCEL WRAPPING TO THE USA



RATE: 2s.; 1s.9d. parcel rate up to 3 lbs (1922-51) + 3d. registration fee (1922-70)

STAMPS: 1933 1/-(x2), USA 10c. Postage Due 1931

POSTMARK: 20.SP.33 (type PS.1), NEW YORK 3.11.1933

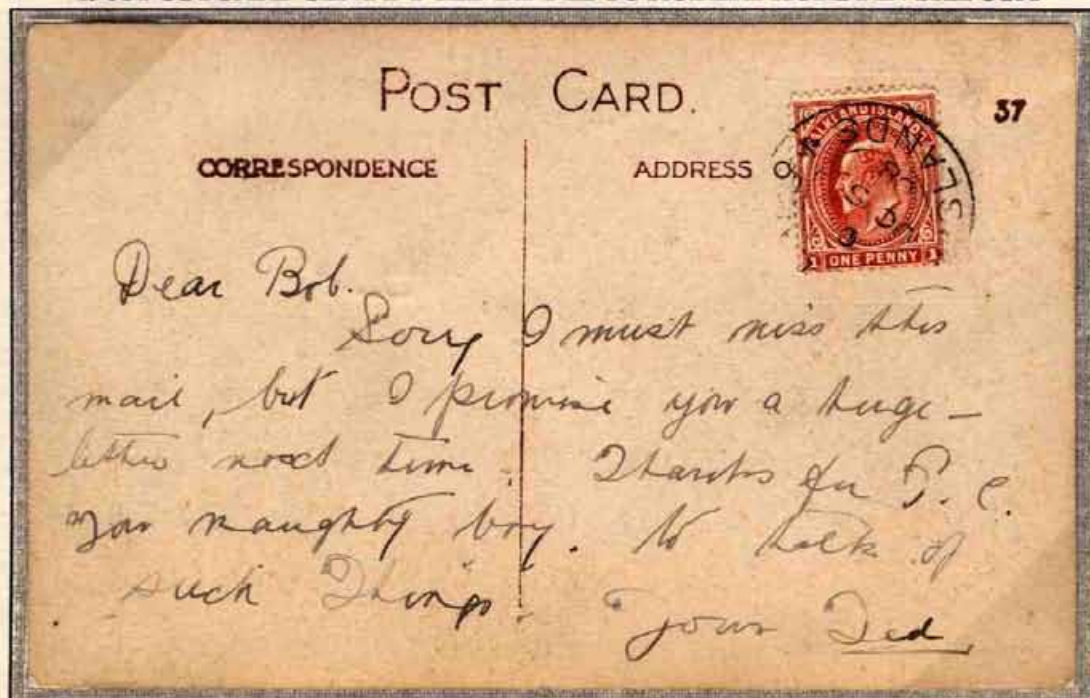
REGISTRATION LABEL: Type 5D

CARRIED BY: "Lafo-nia" dep. 28/9

ARRIVAL MARKING: New York 3.11.1933, "Supposed liable to United States Customs Duties", "Collect 10c. Postage Due for Customs Service".

1d. (1898-1921)

1908 POSTCARD SENT BY TED BINNIE TO ROBERT HURST IN THE USA



RATE: 1d. foreign post-card rate (1898-1921)

STAMP: KEVII 1d. dull coppery red (1907 printing)

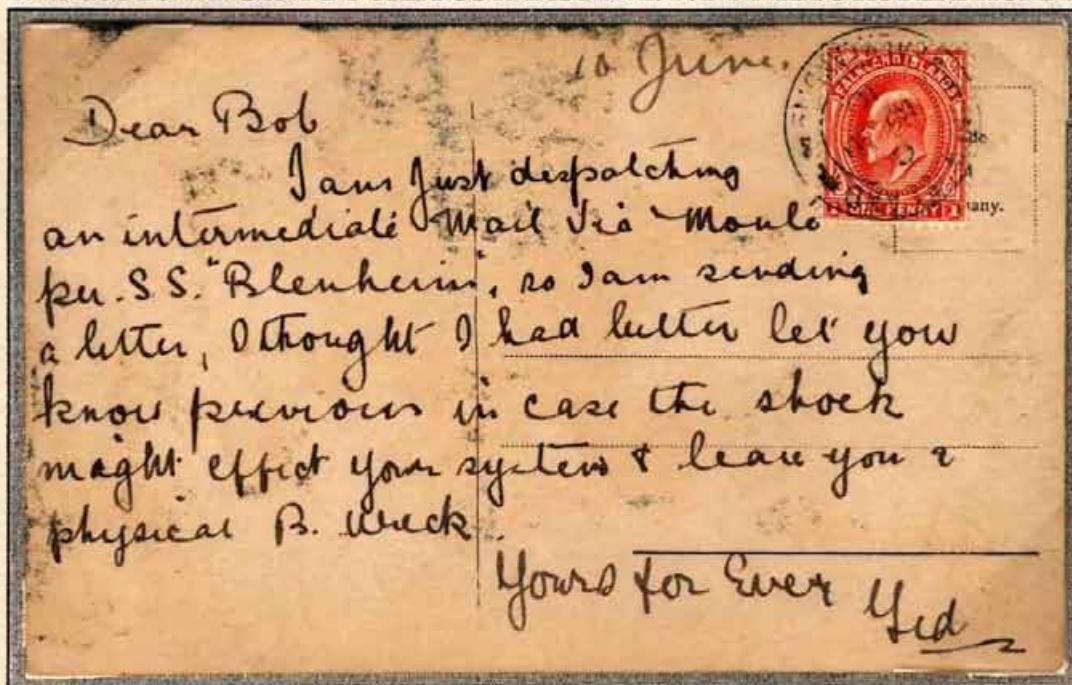
POSTMARK: OC.5.08 (type F.4)

CARRIED BY: "Oriana" dep. 5/10

COMMENT: The card was sent by "Ted" (E. B. Binnie) and was enclosed in a package to his friend "Bob" (Robert Hurst) in New York: "Sorry I must miss this mail but I promise you a huge letter next time".

1d. (1898-1921)

1910 POSTCARD SENT BY THE POSTMASTER E. B. BINNIE TO ROBERT HURST



RATE: 1d. foreign post-
card rate (1898-1921)

STAMP: KEVII 1d.
(1907 printing)

POSTMARK: 10.JU.10
(type N.2)

CARRIED BY: "Blen-
heim", dep. New Island
10/6, bound for Liver-
pool via Montevideo.

COMMENT: The card
was sent by "Ted" (E. B.
Binnie) who had become
Postmaster on New Island
on 1 June 1910, to his
friend "Bob" (Robert Hurst)
in New York. He men-
tions that he is sending a
letter in which this card
was obviously enclosed.

2d. for 1oz (1d. War Tax + 1d. letter rate, 1918-20)

1919 SINGLE RATE WAR TAX COVER TO ENGLAND



RATE: 2d.; 1d. War Tax (1918-20) + 1d. imperial rate (1898-1948)

STAMP/ STATIONERY: KGV 1d. 1916, KGV 1d. envelope 1917 (E3)

POSTMARK: 18.JY.19 (F.4F)

CARRIED BY: "Sorata", dep. 10/8 for Liverpool via Chile

COMMENT: Commercial examples of covers showing the War Tax are rare.

4d. for 1oz (1d. War Tax + 1d. letter rate + 2d. registration fee, 1918-20)

1918 REGISTERED WAR TAX COVER TO ENGLAND



RATE: 4d.; 1d. imperial rate (1898-1948) + 1d. War Tax (1918-20) + 2d. registration fee (1891-1921)

STAMPS: War Stamp 1/2d.(x4) (1st printing), 1d.(x2) (1st printing)

POSTMARK: 22.OCT.18 (type PS.1B)

REGISTRATION LABEL: Type 5A

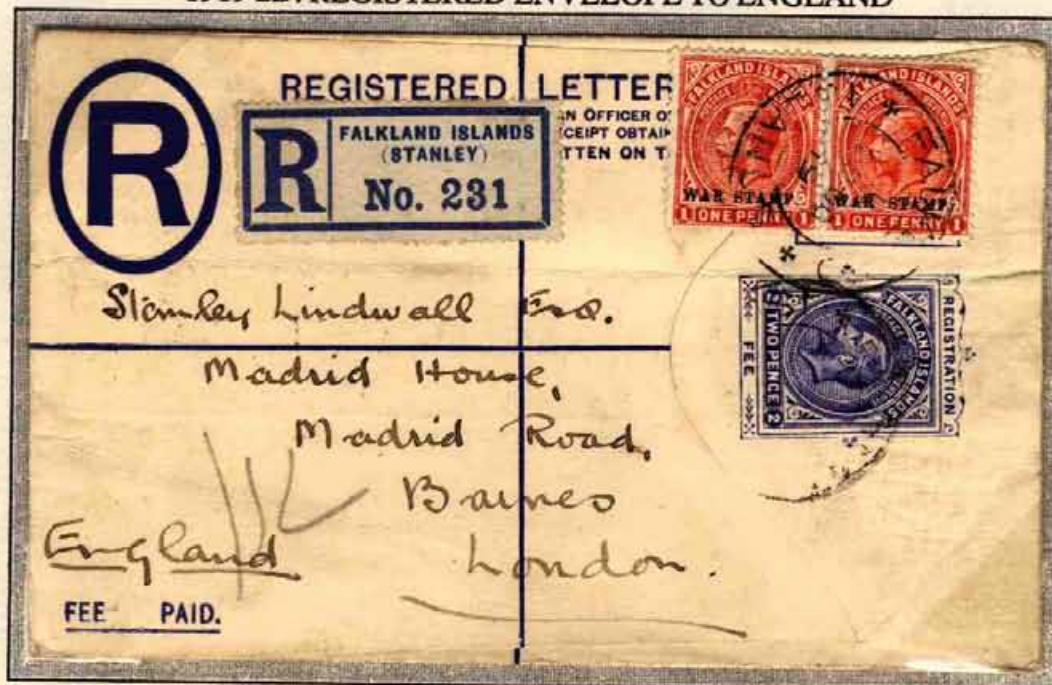
CARRIED BY: "Corcovado", dep. 10/11

ARRIVAL MARKING: Registered Chester 28.DE.18

COMMENT: THIS IS THE EARLIEST RECORDED use of War Stamps.

4d. for 1oz (1d. War Tax + 1d. letter rate + 2d. registration fee, 1918-20)

1919 2D. REGISTERED ENVELOPE TO ENGLAND



RATE: 1d. imperial rate
(1898-1948) + 1d. War Tax
(1918-20) + 2d. registra-
tion fee (1891-1921)

STATIONERY / STAMP:
KGV 2d. registered envelo-
pe (type R1), War Stamp
1d.(x2) (3rd printing)

POSTMARK: 28.OC.19
(type F.4B)

REGISTRATION LABEL:
Type 5A

CARRIED BY: "H. M. S.
Southampton", dep. 29/10

ARRIVAL MARKING:
London 30.NO.19

COMMENT: A very rare
postal stationery item.