

In the wake of James Cook 1728-1779

<u>Plan of the exhibit:</u>	2
1. James Cook <i>made</i> ..	4
1.1 Early years in Yorkshire <i>and in</i> ..	3-4
1.2 North America.	5-6
2. a voyage to observe the Transit of Venus <i>and</i> ..	13
2.1 The Transit of Venus <i>was the aim of</i> ..	7
2.2 Cook's first voyage of discovery in the ENDEAVOUR..	8-14
2.3 towards Tahiti and the rendezvous with Venus.	15-19
3. search for the unknown Southern Continent..	9
3.1 The southern continent postulated by Ptolemy and others..	20
3.2 eluded navigators for centuries.	21-28
4. in the South Seas.	10
4.1 New Zealand circumnavigated <i>and</i> ..	29-34
4.2 the east coast of Australia charted <i>before</i> ..	35-37
4.3 returning home via Torres Strait.	38
5. A second voyage in the southern hemisphere <i>before searching for</i> ..	17
5.1 In the RESOLUTION and the ADVENTURE..	39-47
5.2 Cook reached Antarctic waters.	48
5.3 Many islands in the South Seas visited <i>and a final attempt made</i> ..	49-53
5.4 in the southern Atlantic Ocean <i>on the way home</i> .	54-55
6. the Northwest Passage on his third voyage.	21
6.1 The Northwest Passage.	56-58
6.2 In the RESOLUTION and the DISCOVERY <i>for</i> ..	59-61
6.3 a recent French discovery.	62-63
6.4 Familiar islands in the South Seas <i>visited and</i> ..	64-67
6.5 new discoveries made <i>en route to</i> ..	68-70
6.6 high latitudes in the Bering Strait.	71-72
6.7 Cook returned to Hawaii.	73-74
6.8 Cook's death.	75-76
7. In memoriam	4
Number of pages - NORDIA 2020	80



Die proof in deep red brown on wove paper. Rectangular printer's guide at left. Features portrait of James Cook by Nathaniel Dance (see also page 79+80). 1888 New South Wales centennial issue. The world's first commemorative stamp.

Introduction:

In January 1774 Cook wrote in his journal:

"not only farther than any other man has been before me, but as far as I think it is possible for man to go".

James Cook is widely heralded as one of the greatest maritime explorers and certainly the greatest Pacific explorer of all time. Cook made three voyages between 1768 and 1779.

The aim of the exhibit is to follow in Cook's wake, illustrated by a wide range of postal items.

Legend:

In the exhibit the following notations are used:

Thematic text in Times New Roman, font 10.
Bold text refers to items or persons displayed.
Philatelic text in Italics, font 9.

Rare or important thematic or philatelic items are displayed in **red frames**.

Expertised objects are marked with an "e" adjacent to the object. Copy of the certificates are placed on the back of the pages containing the objects.

Rare or important items:

- Page 1: Die proof. New South Wales 1888.
- Page 2: Centre inverted variety. Cook Islands 1932.
- Page 16: Final artwork. Cook Islands 1968.
- Page 16: Sunken frame die proof. Niue 1920.
- Page 17: Original artwork, signed. New Zealand 1969.
- Page 31: Die proof. New Zealand 1935.
- Page 34: Tui manuscript cancel, only recorded ex. New Zealand 1909.
- Page 36: Die proof, only recorded ex in private hands. Australia 1966.
- Page 64: Hand coloured stamp sized essays, unique. Niue 1930.
- Page 78: "Black omitted" variety on cover. Australia 1970.



Centre inverted variety. Cook Islands 1932. Rare. A sheet of 80 was sold at the Rarotonga post office but uncertain how many stamps have survived. Certificate.



Plate proof with approval signature and date. Centennial issue 1940.

Main references:

- The Journals of Captain James Cook, Vol I - III.* Hakluyt Society, 1988.
- The Resolution Journal of Johann Reinhold Forster 1772-1775, Vol I - IV.* Hakluyt Society, 1982.
- Captain Cook's World.* John Robson, 2001.
- The Captain Cook Encyclopædia.* John Robson, 2004.
- Cook's Log 1976-2020.* Captain Cook Society, UK.
- The postage stamps of New Zealand Vol V.* 1967.
- Christmas Island Local Stamps 1916 - 1938.* www.roland-klinger.de
- Wikipedia and www.

1. James Cook
1.1. Early years in Yorkshire



Imperf between



At the age of 15 he moved to Staithes and later

headed for Whitby which was a thriving town by the sea.

To the north lay the Newcastle upon Tyne coal mines and London was in constant need for coal.



Local publicity slogan. In use 10 Jan to 9 Dec 1969.

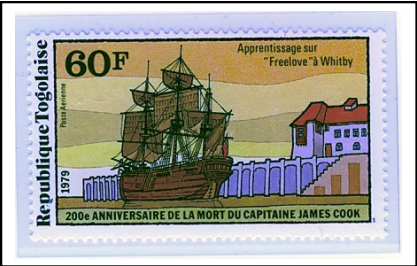


The story of the early life of James Cook is set in a quiet corner in Northern England. He was born on October 28 1728 at Marton.



Registered cover from Marton (NZ) to Taumarunui, tied by Marton cds 29 July 1933, back-stamped arrival cds Taumarunui 31 July 1933. Redirected to Hamilton 7 Aug 1933, unclaimed. Postage 4d: letter rate 1d + 3d registration fee (1 June 1932 - 30 Sept 1939). Marton in New Zealand was named in 1869 to honour Cook's birthplace.

James apprenticed on the Whitby collier FREELOVE transporting coal to London.



TO ADVERTISERS. Guaranteed Circulation 5,000 Stamped Copies.—Total Number of Stamps Issued in June and July, 55,000!!!

Advertisements received at the Envelope Office, 21, Little Queen St., Great George St., Westminster.

To Flute-Players.
N. 6, SURREY STREET, STRAND.—EIGHT KEYS COCOA FLUTES, with patent head, double springs, plates to the lower keys; the keys, tips, sliding-tube, &c., of the best silver, price only £5 5s.; or German silver, £2 12s. 6d. These instruments are made of the choicest wood, finished with great care, and warranted perfect in tune. Manufactured by H. FENNELL, Professor of the Flute, at 6, Surrey Street, Strand, London.

N.B. A trial allowed. Lessons moderate. Flutes repaired and exchanged. Observe—6, Surrey Street, Strand, is a private house.

SIGNOR RUBINI'S NEW ITALIAN ARIETTA, L'ASSENZA, composed expressly for Signor Rubini, by Signor VARRINI. "This charming arietta has delighted us beyond measure—it is continually recurring to our memory. We doubt not that our readers will be as much delighted by the perusal of the song as we have been with the performance of it."—Musical Chronicle.

London: JEFFREYS and NELSON, 21, Soho Square.

APPRENTICESHIP INSTITUTION, (Established 1834.) 16, Red Lion Square.—Principals of Establishments having vacancies for Apprentices, or Parents desirous of apprenticing Youths to established Tradesmen, can have their object directly accomplished on application as above, and thereby obviate the annoyance, expense, and uncertainty of advertising.—Prospectuses and full particulars can be had gratis, on application to Mr. I. M. SAUNDERS, Secretary.

AS CLERK OR AGENT.—A Gentleman without Family—in the prime of life, of superior education, and of strict integrity, having for some years held a responsible situation in the Christian Church, and can give references of undoubted respectability, wishes for employment.—Remuneration not so important as permanence.—Address to T. B. 21, Little Queen Street, Westminster.

The Patent Gas Moderator, gives to Gas Lights the steadiness of an oil lamp, and, by entirely preventing smoke and waste, and dispensing with attention to the lights, repays its own cost in a few months, and afterwards saves at least 25 per Cent. to the consumer. The Patent Burner also saves Gas, and renders the light of Gas perfectly mild and free from glare. Improved Gas Fittings. PLATOW and Co., 40, Hatton Garden.

Bishopgate Plate Glass Warehouse.
THOMAS FOX begs respectfully to inform the Nobility, Gentry, and Public, that he supplies PLATE GLASS for Sashes, and STAINED and ORNAMENTAL WINDOW GLASS, at Prices calculated to bring them into very general use. Several Windows fitted up, displaying richness of colouring not to be surpassed, in Coats of Arms, Crests, Landscapes, Figures, Embossed Work, &c. He also solicits an inspection of his Stock of Chimney, Pier, and Console Glasses, now fitted up at this Warehouse, in every variety of Style, comprising the Gothic, Grecian, Elizabethan, French, &c., in sizes suited to every purpose, and forming a most tasteful and varied Assortment, for which the Prices will be found exceedingly low. Second-hand Glasses of the best quality, at a very considerable Reduction.—93, Bishopgate Street Within, London.

N.B. An extensive and well-manufactured Stock of Cabinet and Up-boltery Furniture, always on hand.

PARLOUR'S PATENT DELINEATOR.—This beautiful Instrument having been greatly improved and simplified by the Patentee, is now offered to the Public in its present Portable Form, at the Reduced Price of £2 2s. It is universally allowed to be infinitely superior to the Camera Lucida, for the purpose of Drawing, or Sketching from Nature. Manufactured and Sold Wholesale and Retail, by the Patentee, by his Agents, Messrs. REEVES and SONS, 150, Cheapside, London; and may be had of all Opticians, Stationers, or Artists' Repositories.

GOWLAND'S LOTION.—The possession of Nature's best passport to favourable reception, a Clear Skin and Bright Complexion, is attained and preserved, with pleasing facility, by the use of GOWLAND'S LOTION, a remedy especially recommended to those subject to Cutaneous Irritability, by a successful experience of Eighty Years. For Toilet purposes the Lotion presents Sustaining and Refreshing properties of the most effective kind, attended in all cases by improvement and generally satisfactory results. "Robert Shaw, London," is engraved on the Stamp. Price, 2s. 6d.; Quarts, 8s. 6d. Sold by all respectable Perfumers and Medicine Vendors; of whom may be had, SHAW'S MINDORA OIL, for the Hair, Price 3s.

SHIRTS, of superior long-cloth, 28s. per dozen, particularly recommended to the notice of gentlemen going abroad; also, jean suits, at 16s. per suit; superfine coats, 40s.; silk waistcoats, 12s.; buck-skin trousers, 20s.; and every other article of dress got up in a superior style equally advantageous to large purchasers. Coats, bedding, sheets, towels, &c.—C. EDMISTON, 91 and 93, Gracechurch Street, four doors from Leadenhall Street.

TROUSERS CUT TO FIT IN A SUPERIOR STYLE. CHARLES STEWART, Tailor, 58, St. Paul's Church Yard, having directed his attention particularly to the fit of trousers, confidently invites the attention of gentlemen desirous of obtaining perfection in that particular article of Dress.

Hynam's Superior Congreve Lights.
J. HYNAM begs leave to make known to his Friends and the Public in general, that many attempts have been made to equal, and even to surpass, if possible, his CONGREVE MATCHES, but as their attempts have proved fruitless, J. Hynam's Congreve Matches still bear the supremacy, for their safety as well as their facility in lighting, and will retain virtue longer than any other that is made, and are not so liable to be affected by damp or heat as the greater part of those now made, especially by those purported to be made without phosphorus. Also, Hynam's highly scented superior Fuses for lighting cigars in the Open Air. Portable Candlesticks and Fusee Boxes of every description. Shipping and all country orders received at J. Hynam's Chemical Light Manufactory, No. 7, Princes Square, Wilson Street, Finsbury, London.

Coals; Best Newcastle Wall's End Coals 26s. per Ton.
THOMAS HUBERT, Lighterman and Coal Merchant, established 26 years, is delivering from St. John's Wharf, Millbank Street, Westminster, Newcastle COALS at 22s.; best Newcastle Wall's End, 26s.; superior Yorkshire Coals, 24s.; Canal Coal, 35s. To save expense in collecting, the money must be paid to the carman, or at the Wharf when the order is given, at the same time the party may inspect the coals in the barges and see them loaded. Coke 20s. per chaldron. Exceeding three miles 1s. per mile per ton or chaldron extra. Letters to be pre-paid.

British and Colonial Export Company, No. 98, LEADENHALL STREET.
Capital £50,000, in £2,500 Shares of £20 each.—Deposit, £2. per Share. First Instalment £3. per Share.

Directors.
David Dickson, Esq. T. Horton James, Esq.
Henry Howell, Esq. Wm. Charles Long, Esq.
Resident Manager, Thomas Horton James, Esq.

THE BRITISH AND COLONIAL EXPORT COMPANY was established for the purpose of cultivating the profitable Trade with the Australian Colonies, and other British possessions in the East; and, although little more than twelve months in operation, the Directors have been already enabled to pay the first Half-year's Dividend at the rate of 10 per Cent. per Annum, and intend continuing the same rate uniformly every Half-year, besides placing a considerable surplus to a reserved Fund towards accumulation of Capital.

It is not intended to call for more than £25. per Cent., or £5 per Share of the Capital, during the year 1840.

As the Company's business is conducted with the strictest caution and economy, and under the matured experience of a Manager who has lately resided at Sydney and Port Phillip, in New South Wales; Hobart Town and Launceston, in Van Dieman's Land; Adelaide, in South Australia; the English Settlements in New Zealand, and other Places in the East, the Directors are fully satisfied that the Undertaking will realize the most sanguine expectations of the Proprietors. The remaining Shares will continue to be issued at 20s. Premium until further notice, and may be obtained by a written application to the Directors as under.

Form of Application for Shares.—"GENTLEMEN, Please to insert my name as a Subscriber to your Company for Shares, for which I now enclose an order, at the rate of £1 per Share, on account of the Deposit and First Instalment.

"To the Directors of the
"BRITISH AND COLONIAL EXPORT COMPANY,
"No. 98, Leadenhall Street."

The European Life Insurance Company, Established January, 1839, with a large protecting Capital.
No. 10, CHATHAM PLACE, BLACKFRIARS.
President.—Sir Charles Forbes, Bart.
Vice-President.—Sir James Rivett Carnac, Bart.

Directors.
Thomas Henry Call, Esq. William Sargent, Esq.
Simon Fraser Cambell, Esq. Frederick Silver, Esq.
John Rivett Carnac, Esq. John Stewart, Esq.
John Harding, Esq. George James Sullivan, Esq.
John Gresham Harris, Esq. John Thoyts, Esq.
Rev. Philip Le Breton. William Paxton Jervis, Esq.

Secretary.—David Foggo, Esq.

THIS Company, which is protected by a large Subscribed Capital, offers to Assurers the following among other advantages:—

1. A participation seasonally in the profits realized.
2. Moderate premiums, payable annually, half yearly, or quarterly, during life; in a single payment; in a limited number of years, in equal payments; or on a decreasing or increasing scale.
3. Liberty to pass in steam or other decked vessels, during peace, or from any part of Europe.
4. No extra premium to officers in the army or navy, not in actual service.
5. All claims paid within three months.
6. By a regulation peculiar to this Company, no claim is opposed unless premeditated fraud or wilful misrepresentation be discovered in the documents on which the Assurance was effected; unintentional error forms no ground of objection.
7. Policies purchased from the Assured on liberal terms.
8. The usual commission allowed to Solicitors and Agents.

Persons desirous of becoming Agents for the Company in any Town where no appointment has been already made, are requested to apply personally or by letter to the Secretary, at the Company's Office, No. 10, Chatham Place, Blackfriars, London.

SHOOTING SEASON.—JOHN CHAPMAN, 53, STRAND, begs to announce that his new SHOOTING CRAVATS are now ready; also his Shooting Gloves, used and recommended by G. Hawker. Four Cravats and three Pairs of Gloves despatched by way to any part of the Kingdom on receiving a Sovereign in a paid India Pocket Handkerchiefs, large size and durable patterns, 3s. piece. Gentlemen requiring good and fashionable Shirts can have made and sent to them in eight days for 40s., by forwarding a P. Shirt, carriage paid, to 53, Strand.

To Noblemen and Sportsmen in General.
THE immense Advantage of having Gunpowder direct from the Manufacturer, is without precedent, and those who have already used Sir HENRY BRIDGES's, will do well to give him a trial. Orders sent to SAMUEL CLARK, Gunpowder Office, 3 Swinith's Lane, London, will meet with punctuality.

SS and DS excellent for Gamekeepers.

Foreign Wine Establishment, 61, Edgeware Road (OPPOSITE BURWOLD PLACE.)
WATTS and Co. beg to return their best thanks for the extensive patronage bestowed on this Establishment, and to Families who have not given them a trial, that (in addition to the they have a large Stock of BOTTLED LONDON and DUBLIN EDINBURGH and INDIA PALE ALES, which are now in splendid dition, at the following Prices, for Cash on Delivery.

Per Doz.		Per	
London SINGLE STOUT . 4s. 6d.	bottled . 5s. 6d.	EDINBURGH ALE, fresh . 6s.	
Ditto DOUBLE do . 5s. 6d.		Do. in splendid condition, 8s.	
* GUINNESS'S EXTRA . 6s. 6d.		INDIA PALE ALE . . . 7s.	
DUBLIN STOUT . . . 6s. 6d.		Do. in Pints 4s.	
* Ditto, in Pints . . . 4s. 6d.			

WATTS and Co. deliver their Bottled Beer twice a day in the neighbourhood of St. John's Wood, Regent's Park, Kilburn, Baywater within two miles, exceeding that distance once a day.

Bottles must be paid for if not returned at the time, the same per charged allowed for them at any time when requested.

* As a satisfaction to their Customers, WATTS and Co. have, in addition to the Labels, caused the Corks to be branded,

"A. GUINNESS SONS AND CO.'S EXTRA STOUT."

INDEPENDENT WEST MIDDLESEX ASSURANCE COMPANY, opposite the Bazaar, Baker Street, Portman Square, London; South St. David's Street, Edinburgh; Ingram Street, Glasgow; and Sackville Street, Dublin. Empowered under the several Acts of Parliament of 14th Geo. III. c. 48; 22nd Geo. III.; 53rd Geo. III. c. 141; 3rd Geo. IV. c. 92; and 1st Vic. c. 10.—Immediate Benefits offered to the Public.—Life and Fire Insurance Rates reduced 30 per Cent. per Annum lower than any other Office.—Life Annuity Rates, calculated upon Equitable Principles.—For Example: For every 100l. deposited, this Association will grant the Annuity placed opposite the Age of the party depositing.—From 50l. and upwards, in proportion.

Age	50 to 40	45 to 50	50 to 55	55 to 60	60 to 65
Per Cent.	per Cent.	per Cent.	per Cent.	per Cent.	per Cent.
£s	0 0	£s 10 0	£s 20 0	£s 10 0	£s 10 0

Age 70 to 75 to 80
Per Cent. per Cent. per Cent.
£s 10 0 | £s 20 0 | £s 25 0

LIFE ASSURANCE RATES.
Age 20 to 25 to 30 to 35 to 38 to 40 to 45 to 50
£ s. d. £ s. d. £ s. d. £ s. d. £ s. d. £ s. d. £ s. d. £ s. d.
Premium 1 11 0 | 1 15 0 | 2 0 0 | 2 6 0 | 2 10 0 | 2 15 0 | 3 0 0 | 3 15 0
This Company make no Charges for intermediate Ages under 50 Years.

FIRE INSURANCE RATES.
Common Insurance s. d.
Private Houses and Shops (not hazardous) . . . 1 0 per Cent.
Hazardous 2 0
Double Hazardous 3 6
Farming Stock 1 6
Secretary.—G. E. WILLIAMS.

THOS. HARRIS AND SON'S TELESCOPES.—T. H. and Son's IMPROVED ACHROMATIC TELESCOPES are warranted to be unequalled by any other house, at the prices. On receiving a remittance, a Telescope will be sent, carriage free, to any part of the kingdom, and exchanged if not approved. No tourist, or sea-side visitor should be without one.

£ s. d.	£ s. d.
A Pocket Telescope to show objects 8 miles off . . . 0 18 0	
A Pocket Telescope to show objects 12 miles off . . . 1 10 0	
A Pocket Telescope to show objects 16 miles off . . . 2 0 0	
A Pocket Telescope to show objects 20 miles off . . . 4 0 0	

N.B. A distant object to test them with. Thos. Harris and Son, Opticians to the Royal Family, 52, Great Russell Street only, (opposite the British Museum) established 60 years. Recollect! not related to, nor connected with, a house of the same name.

Coffee! Platow's Patent Coffee Urn.
MADE WITHOUT TROUBLE.—DRUNK WITHOUT REGRET.
PRODUCES delicious Coffee by a beautiful and highly amusing scientific process, that saves all trouble. Sold in France, Tin, and Japan, by all Ironmongers in Town and Country.

Glass Shades for Figures, Clocks, Models, and Bronzes.
MAY be had, Round, Oval, or Square, of every dimension; of which Priced Lists will be forwarded to any part of the Country on receipt of the Address.—R. COGAN's French Shade and Lamp Shade Warehouse, 48, Leicester-square.

SOUTH SAXON HOTEL, GRAND PARADE, ST. LEONARD'S ON SEA, HASTINGS.—H. P. HUTCHINGS, Postmaster to Her Majesty, Queen Adelaide, respectfully solicits a continuance of the Patronage of the Nobility and Families visiting this delightful Watering Place, and begs to assure those who may honor him with their support, that the strictest personal attention is devoted to the various departments, so as to ensure every accommodation and comfort at moderate charges. The Hotel is replete with every convenience, combined with elegance, and being situated in the best part of St. Leonard's, facing the Sea, having extensive and well arranged Stabling, and Coach-houses, on a level with the Hotel, has a decided advantage over every other Establishment at the sea side.—Families boarded by the week, on the most reasonable terms.—Communications per post, punctually attended to.

To Persons wishing for Agencies.

ALVA
0781
STATION
BATH

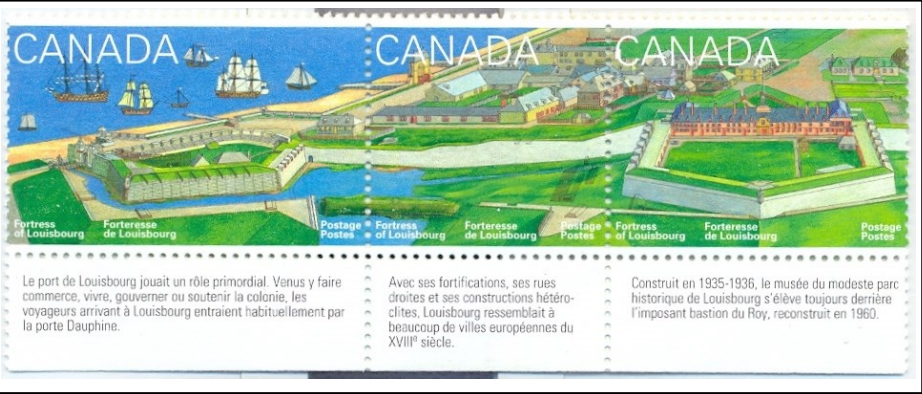
POSTAGE ONE PENNY.

18 V

1d 1840 Mulready wrapper with advert inside advertising Newcastle Coals (lower left corner) Stereo A37. Used from Dublin to Belfast, cancelled by strike of red-brown Maltese Cross. Reverse Dublin date stamp No 11 1840 and Belfast/Late circular date stamp No 11 1840. Only two examples of this advert recorded to date. Copy of front (reduced size).

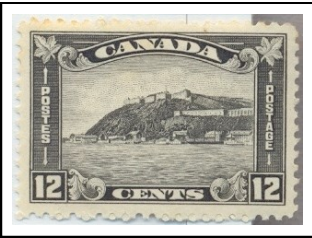
1.2. North America.

1.2.1. The Siege of Quebec 1759

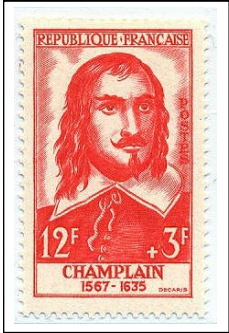


Cook entered the Royal Navy in 1755 for reasons of his own. In 1758 he was part of a British fleet capturing **Fort Louisbourg** from the French. Fort Louisbourg was situated close to the mouth of the St. Lawrence River and important for controlling Canada.

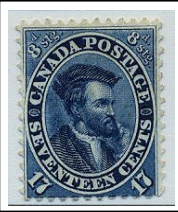
In Cook's days a **citadelle** guarded Quebec which was the largest city by the St. Lawrence River.



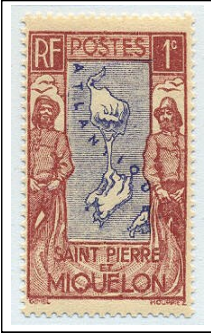
Cook took part in the **Siege of Quebec** that lasted all summer of 1759.



Jacques Cartier (1491-1557) discovered the St. Lawrence River in 1534 and **Quebec** was founded 1608 by the French explorer **Samuel de Champlain** (c1570-1635).



1.2.2. Newfoundland



After the war France retained the islands of **St. Pierre and Miquelon**. Cook made a speedy survey and produced an accurate **map**.

before the islands were being turned over to the **French Governor Francois-Gabriel d'Angleac** in 1763.



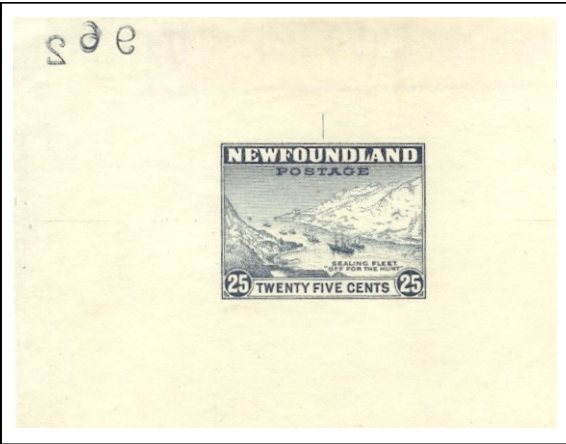
Part of Cook's map.



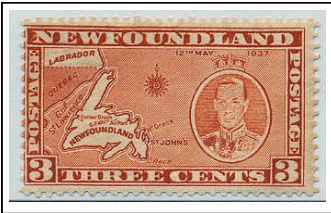
His next job was to map **Newfoundland** which was lying **off the coast of Canada** and was the base for fishing cod and **hunting seals** at the rich **Grand Banks**.

Trial colour plate proof.

Cook undertook a detailed survey of the island and produced a very accurate **map**.



Die proof in issued colour with production number.



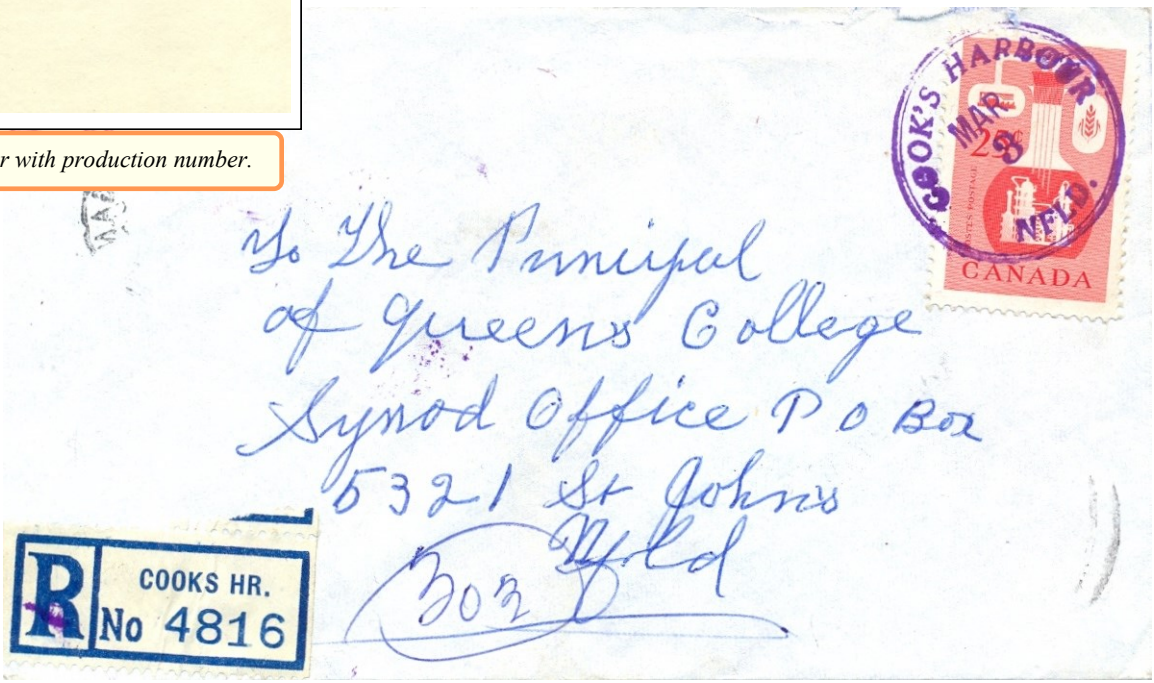
Imperf plate proof



Engraver's die proof, signed by J. Combet. Final stage proof from the hardened die before acceptance by the Postal Administration. 29 mm official seal inscribed Imprimerie des Timbres-Poste - France. Printed in 5 (or 6) colours, 3 to 8 in each colour with a total of up to 28.



Copy of reverse (reduced).



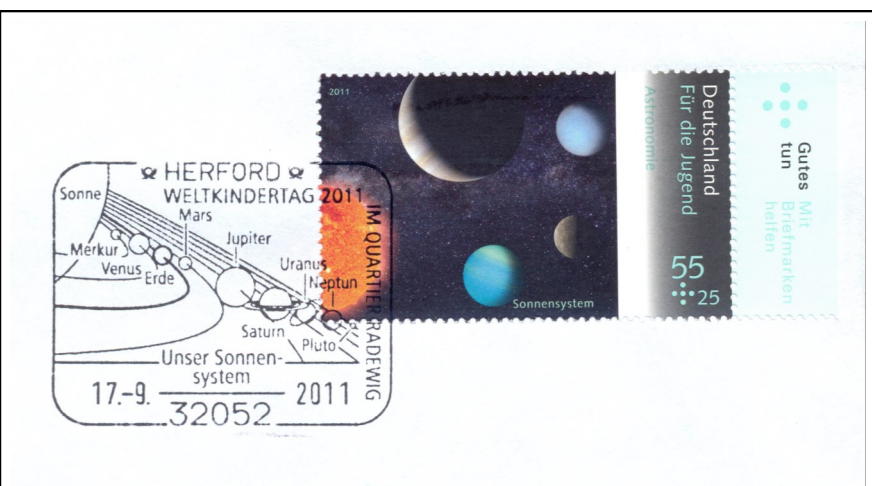
Registered cover to St. Johns, NFL. Tied by Cook's Harbour cds Mar 3 (62). Postage 25c: Domestic letter rate 5c (1.4.1954 - 31.11.1968) + registration fee 20c. Cook's Harbour is named after Cook.

2. A voyage to observe the Transit of Venus

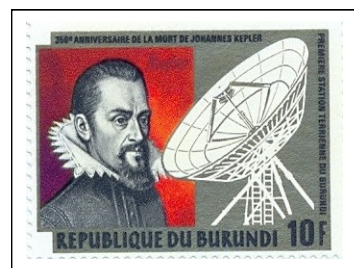
2.1. The Transit of Venus *was the primary aim of..*



Observing the **Transit of Venus** was the primary aim of Cook's first voyage. It is an astronomical event when the **"inner planet" Venus, Earth** and the Sun are aligned, and Venus passes **across the face of the Sun**, as seen from Earth.



Original artwork, acrylic on art paper. Artist F.L. Lamosas. Unsigned, unique. For part of the 1981 Burundi 350th Death Anniversary of Johannes Kepler issue. Ex Fournier archives.



as issued.

Johannes Kepler (1571-1630) was the first to predict a transit of Venus..

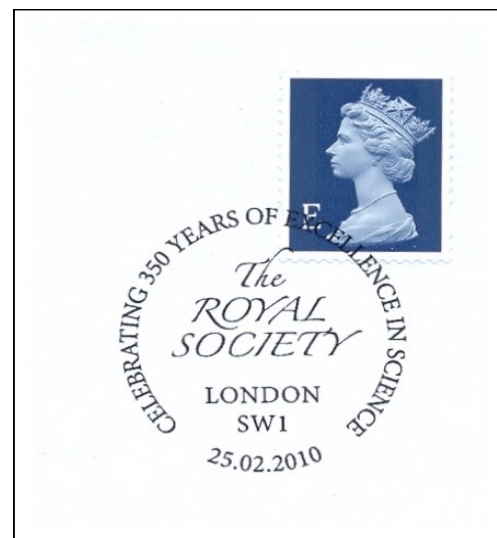


and **Edmund Halley** (1656-1712), described in 1691 how transits could be used to compute the distance from the Earth to the Sun.



Transits of Venus occurs in sequences of 8 - 121½ - 8 - 105½ years. The latest Transit was in 1761 so the one in 1769 would be the last opportunity for many years. It was important to get observations from as many different and as widely separated locations as possible. The Hungarian astronomer **Maximilian Hell** (1720-92) travelled to northern Norway and Cook was selected to go to the South Seas.

2.2. Cook's first voyage of discovery *in..*



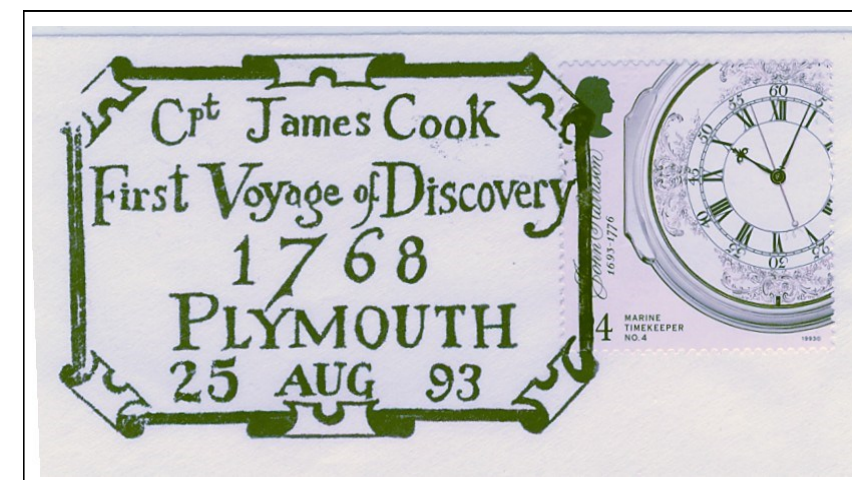
Tahiti was chosen for observing the **Transit**.



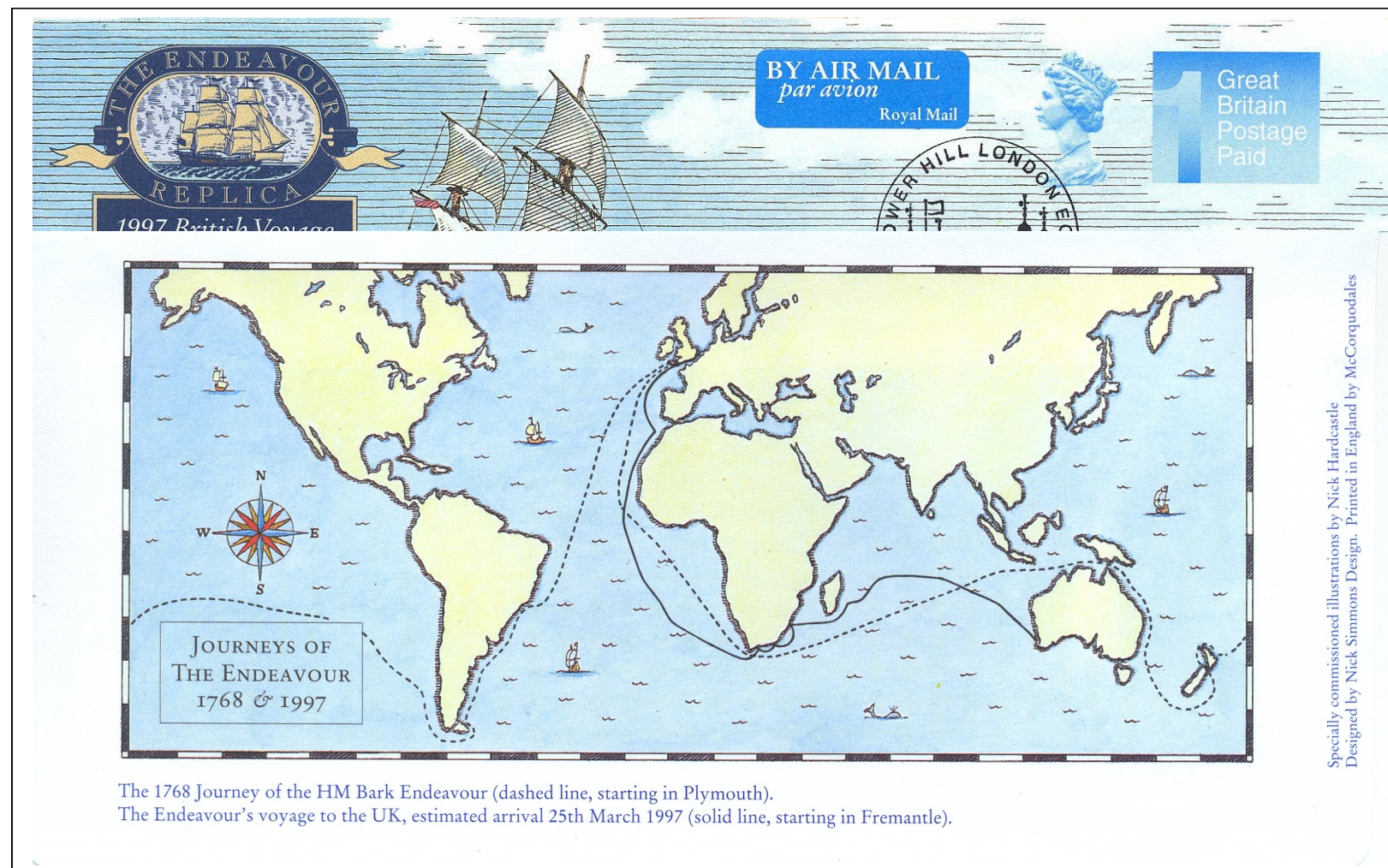
On August 25th 1768 James Cook departed **Plymouth** on his **First Voyage of Discovery**.

Scientists from the **Royal Society** in London calculated that the Pacific Ocean would be a vantage point to observe it.

In 1768 **Samuel Wallis** (1728-95) returned from a voyage around the world where he had visited Tahiti. He spoke well of the island and the islanders and..



Aerogramme (reverse). Issued to commemorate the British voyage of the ENDEAVOUR REPLICA 1997. The dashed line shows the journey of James Cook 1768-71.



The 1768 Journey of the HM Bark Endeavour (dashed line, starting in Plymouth). The Endeavour's voyage to the UK, estimated arrival 25th March 1997 (solid line, starting in Fremantle).

Specialty commissioned illustrations by Nick Hardcastle. Designed by Nick Simmons Design. Printed in England by McCorquodales.

2.2.1. The ENDEAVOUR Bark.



"The Bark, **Earl of Pembroke**, later Endeavour, leaving Whitby Harbour in 1768". Part of painting attributed to T. Luny.

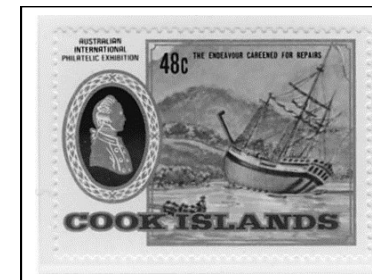


A Whitby collier (a ship for transporting coal in the North Sea trade) was selected for the voyage. It was the **EARL of PEMBROKE** and it was re-named **HM Bark ENDEAVOUR**. The ENDEAVOUR had three masts and carried square sails on all masts.



Original artwork, watercolour on art paper Unsigned. Acquired from the archives of the designer Geoff Fuller. New Zealand Heritage Ships issue 1990. Issued with a face value of 50c (above).

The ENDEAVOUR was ideal for the voyage ahead. It was a broad, flat bottomed ship with shallow draft and could sail close to shore for mapping and easily beached for repair.



"View of the Endeavour River where the ship was laid ashore for repair". Painting by Parkinson.

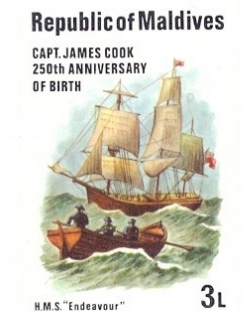
The ENDEAVOUR carried an open oared **pinnace** rowed by pairs of men sitting side-by-side.



The **stern** was decorated with carvings. She had four stern windows, the middle window was a dummy.



Proofs by the Format Process



Format International Security Printers Ltd
Parkhouse Estate, Parkhouse Street, London SE5. Telephone 01-703 5068
Cables Formpro, London SE5

Master proof cut to stamp size and affixed to printer's presentation card. Captain Cook's discovery of Hawaii issue. Maldives 1978. 2 or 3 are thought to exist.

Cook was directed to carry **cork** jackets (life-jackets).



Fancy cancel. New York City segmented **cork** cancels. Cover from New York to Montreal, Canada. Backstamped arrival cds Montreal Sept 9 1863. Postage 10c = cross-border cover rate in 1863.

2.2.2. The naturalist Joseph Banks..



Variety:
Embossed head omitted.

The voyage was the first major voyage of scientific discovery and the twenty-five-year-old naturalist **Joseph Banks** (1743-1820) was the scientific leader of the expedition.

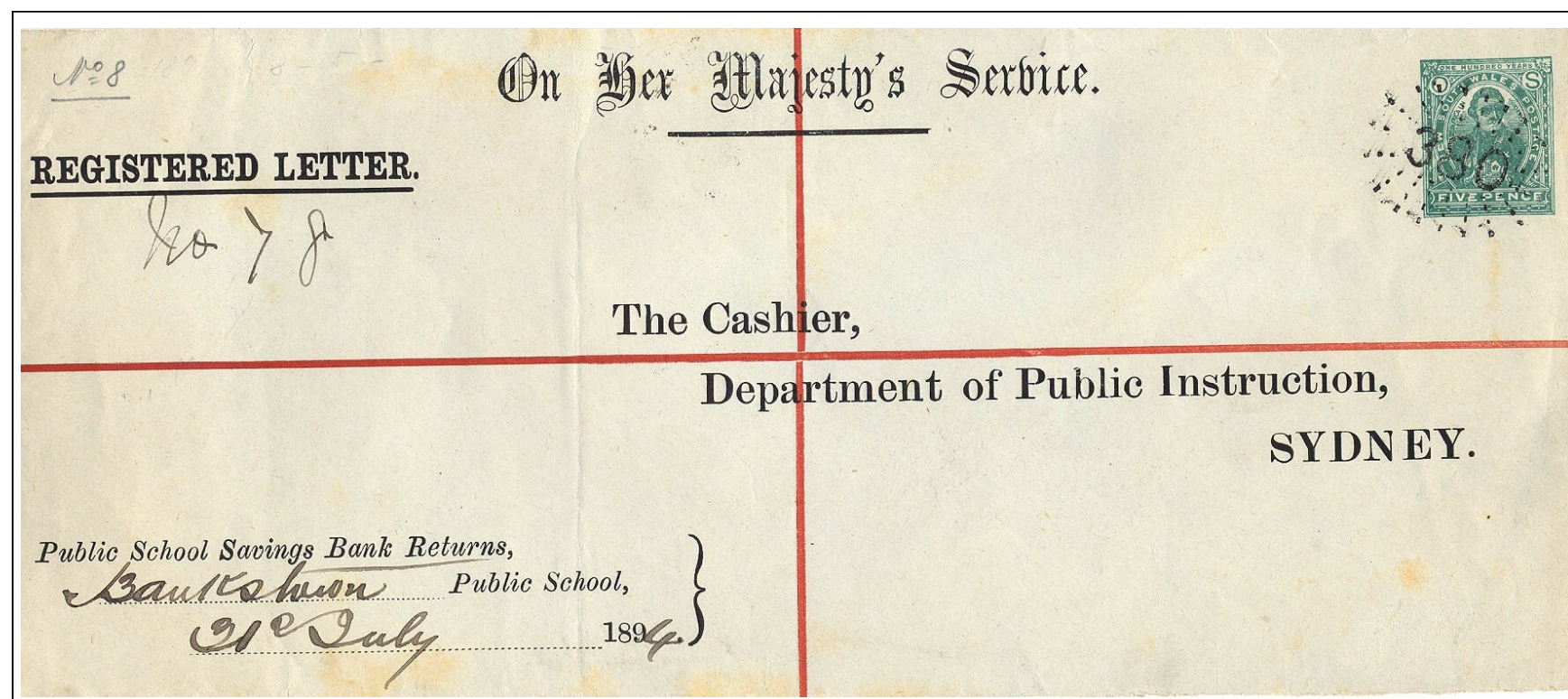
The naturalists found many plants and animals never before seen by Europeans and they made the first reported sighting of a **kangaroo**.



Entire from London to New York, United States endorsed "**Kangaroo**". Backstamped Liverpool cds 27 Apr 1859. Postage 48 + 6 c. ss KANGAROO was a passenger ship built in 1853 operating the Inman Line (former Liverpool, Philadelphia and New York Steamship Company) between Liverpool and New York.

The genus **Banksia** was created to honour Joseph Banks. It is a genus of trees or woody shrubs containing over 170 species, all but one endemic to Australia. 4 species were collected by Banks and co-workers in Australia.

Banks is commemorated in two towns or suburbs in Australia; Banksia and **Bankstown** in Sydney being named after Banks.



Postal stationery; registration envelope. Public School Savings Bank Returns from **Bankstown** 31st July 1894 to Sydney. Tied by numeral cancel "380" Bankstown. Postage 5d = 2d for domestic mail + 3d registration fee. 3600 envelopes issued on September 21, 1892.

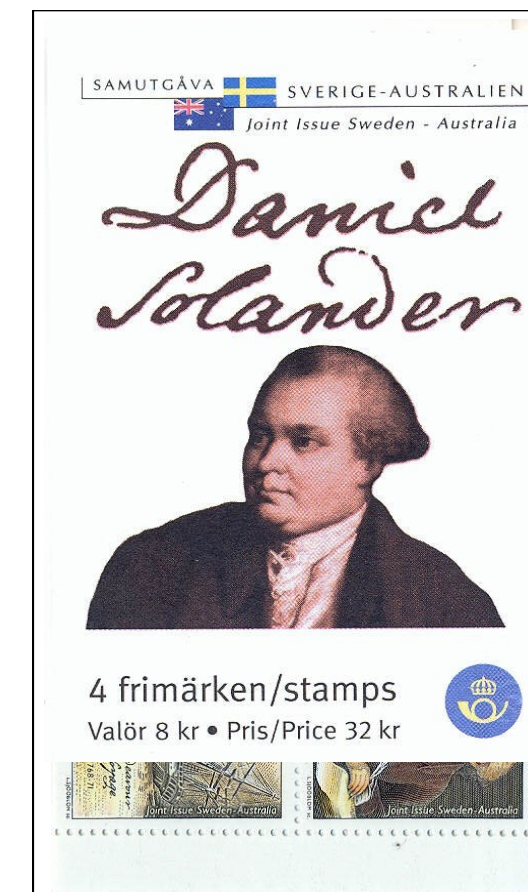
2.2.3. the assistant naturalist Daniel Solander..

Daniel Solander (1733-82) was assistant naturalist on the voyage.

He was born in **Piteå** in northern Sweden in 1733.



Meter stamp, Piteå Municipality, Sweden. D3.2. Francotyp A9000 (MV) (based on the widely spaced date figures). Solander and rhabdothamnus solandri (similar to the 1969 New Zealand issue - below).



Booklet with copy of contents. Sweden 2001.



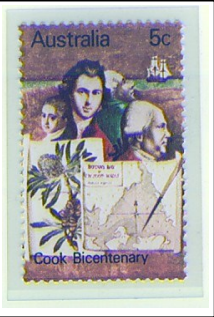
Commemorative postmark. 250th Birth Anniversary of Solander.

Solander was a pupil of the Swedish botanist **Carl Linnaeus** (1707-78).



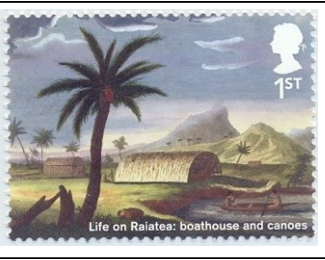
Booklet with copy of contents. Sweden 1939.

2.2.4. the astronomer Green and Parkinson the artist.



Charles Green (1734-71) (in green jacket!) was astronomer on the voyage and **Sydney Parkinson** (1745-71) the botanical draughtsman.

Parkinsons primary role was to draw **natural history specimens** but he also drew **landscapes** and **portraits**.



“Boat house at Raiatea”



“Portrait of a New Zealand Man”



“The Head of a Chief of New Zealand, the face curiously tattooed, or mark'd according to their Manner”
Engraving by T. Chambers after Parkinson.



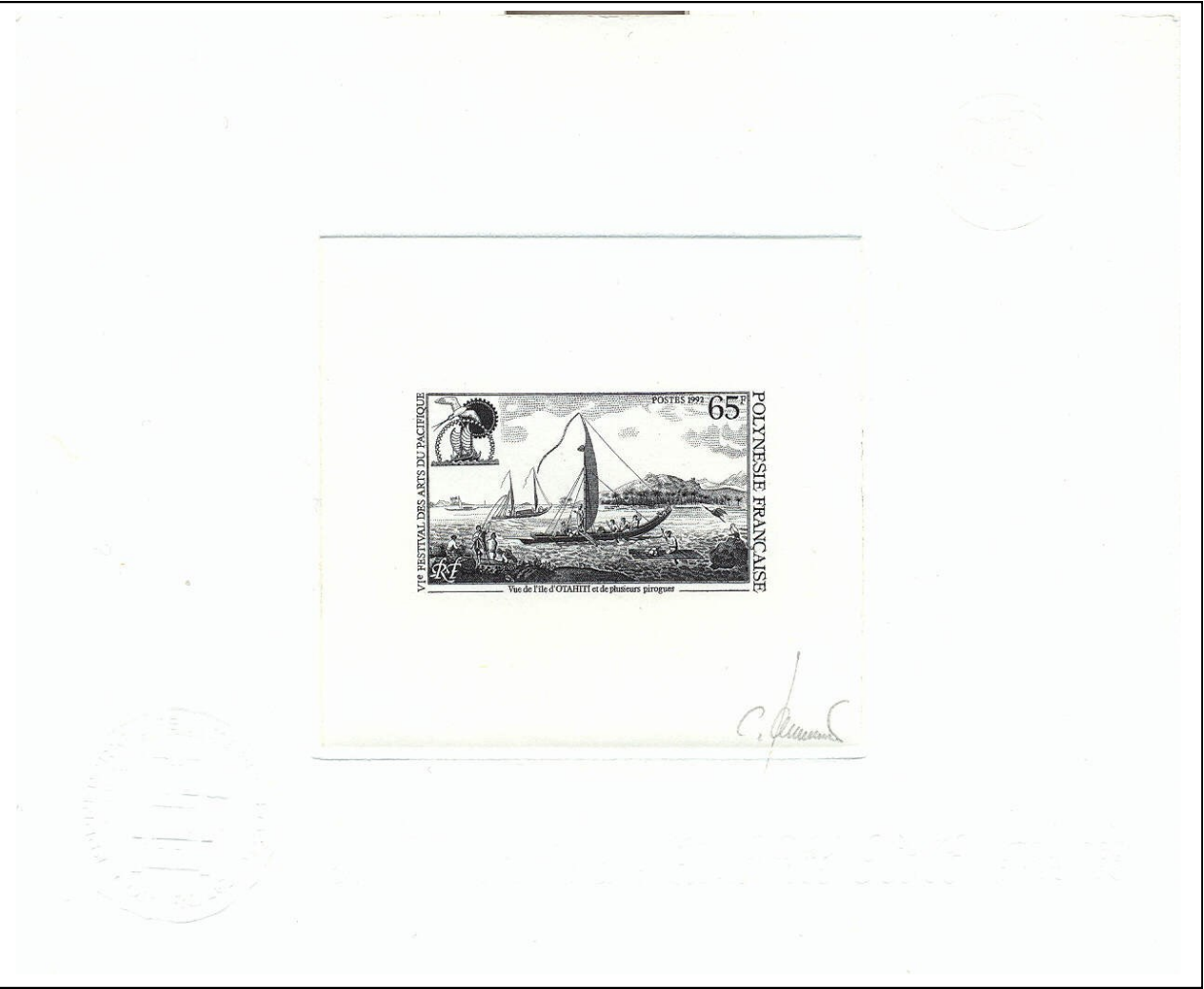
“Volatinia jacarina” and Parkinson self-portrait.



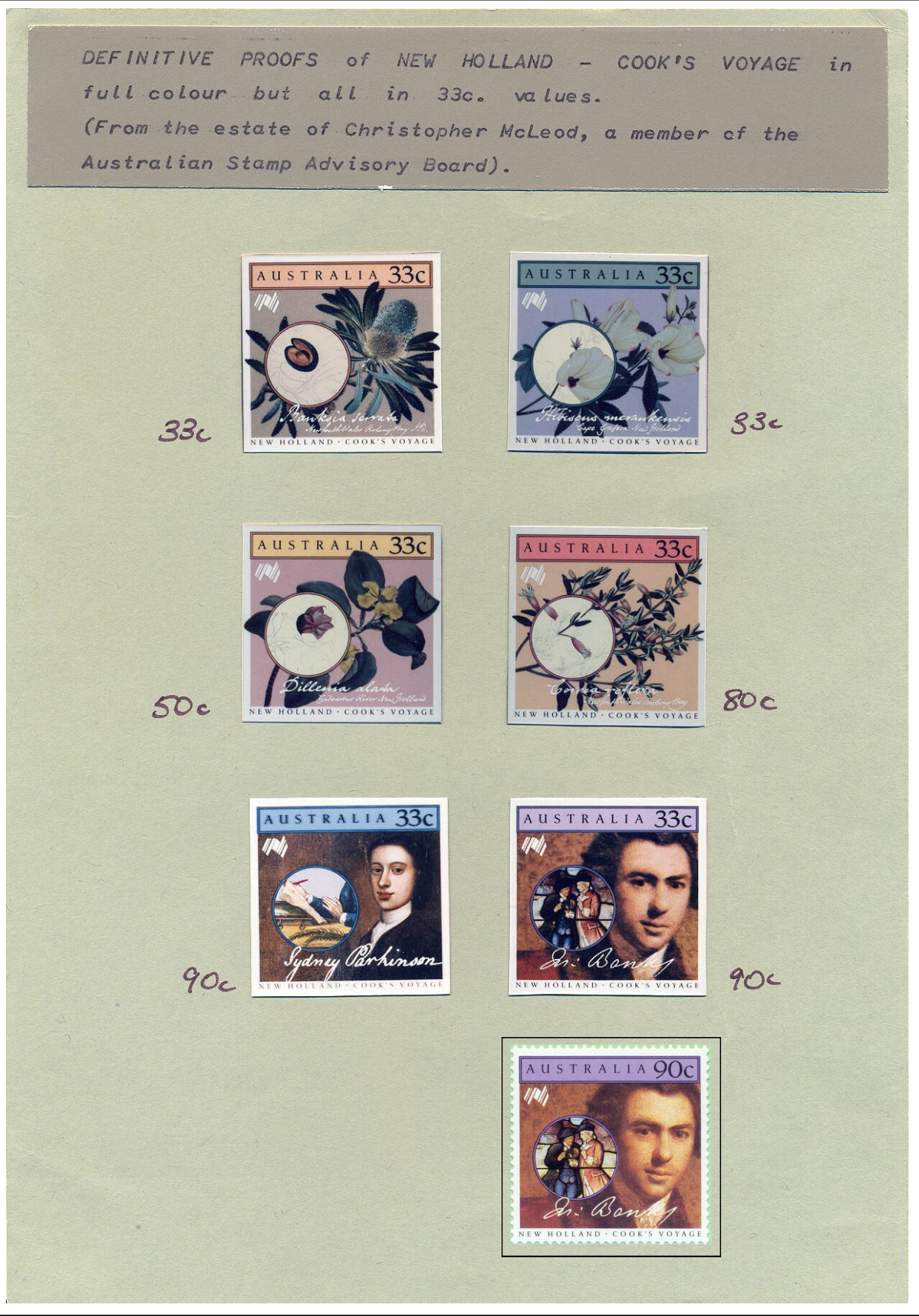
“A native of Otaheite, in the Dress of His Country”



“A woman & a Boy, Natives of Otaheite”



Engraver's die proof in black, signed by C. Jumelet.
From a drawing entitled : “A view of Otaheite, with several vessels of that island”



Definitive proofs + one stamp as issued. Colour reproductions of artist's work.
Sent to the Australian Stamp Advisory Board members for their approval. 6 copies produced. Proofs in 33c face value but 4 stamps issued in other values as indicated. 1986 Bicentenary of Cook's voyage to New Holland issue.
Drawings of **plants** collected during the voyage, a self-portrait by Parkinson and a **portrait of Joseph Banks**.

2.3. Towards Tahiti and a rendezvous with Venus.

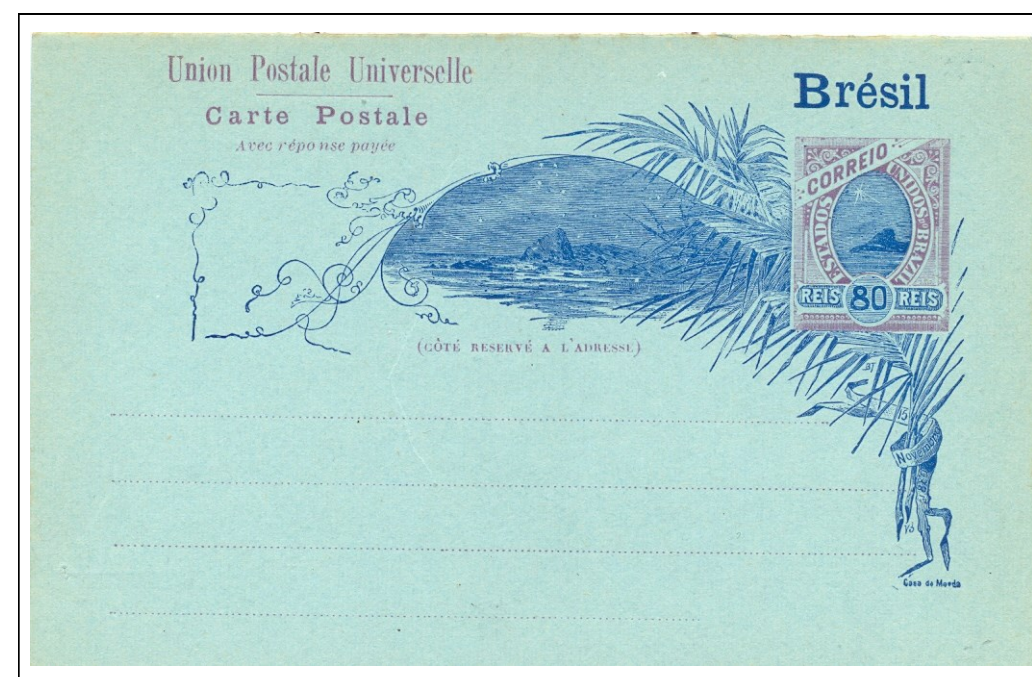
2.3.1. The beginning of an epic journey towards..



Cook made the first stop at **Madeira** for provisioning. Live **bullocks** and **wine** were taken on board for the onward voyage towards **Brazil** in South America.



Cook anchored off **Rio de Janeiro..**



Postal stationery; postal card with reply card attached. Domestic use. Brazil 1889.

..and after having rounded **Cape Horn..**

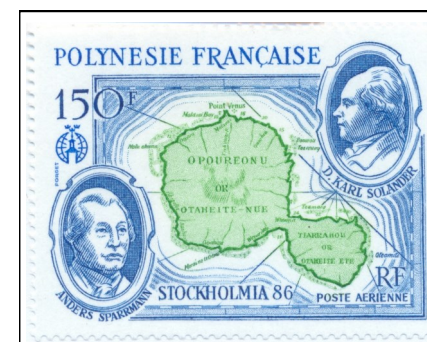


..he reached **Tahiti** discovered by Wallis in 1767.



Trial colour plate proof with colour code in pencil.

2.3.2. .Tahiti for..

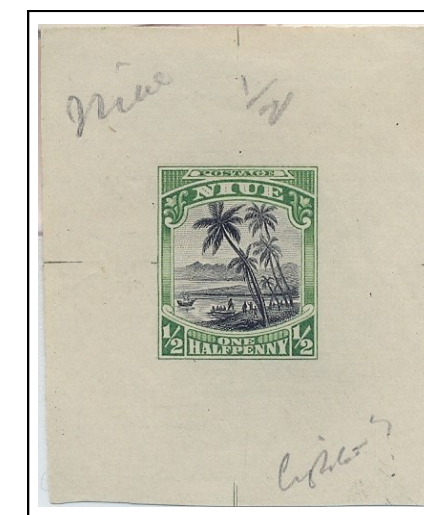


Enlarged part of design.

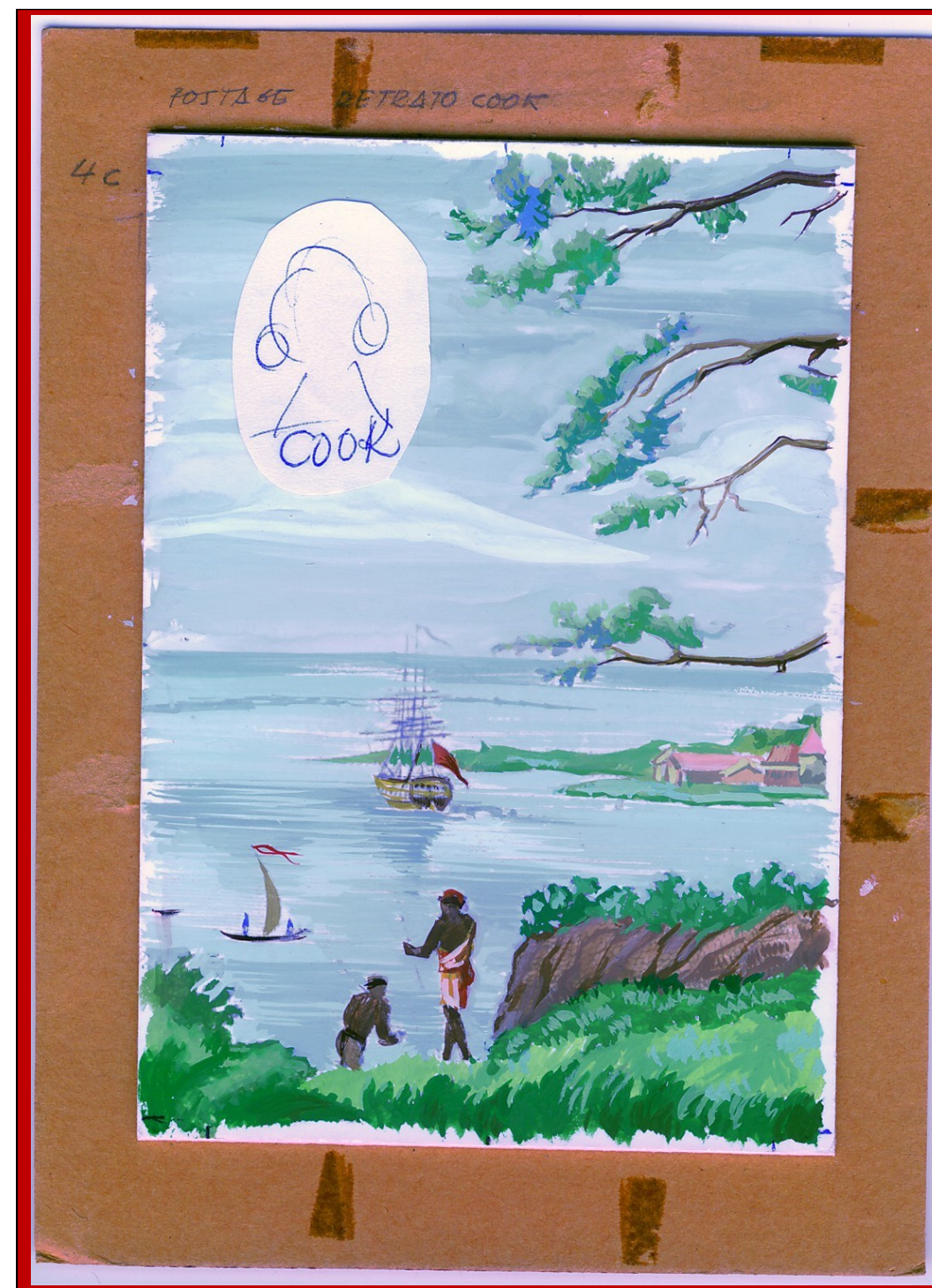
Cook selected **Matavai Bay** as a suitable anchorage to observe the transit. Cook named the northern part of the bay **Point Venus**.

This Niue 1920 issue was probably intended to depict Cook's landing in one of the Cook Islands.

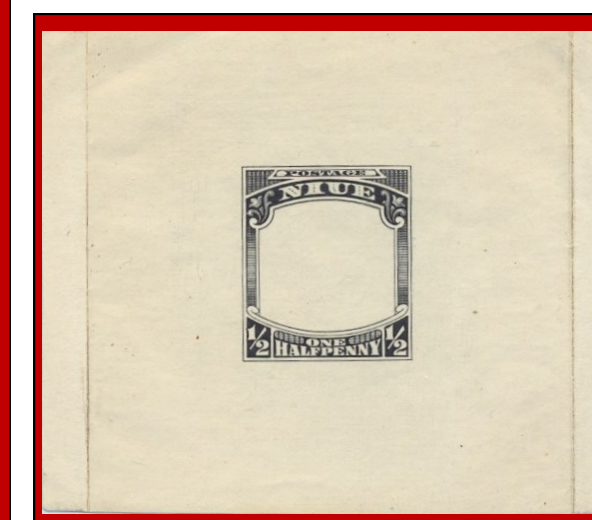
The design was however adapted from a photograph of **Point Venus**; the artist then added the men, boats and the mountains in the background.



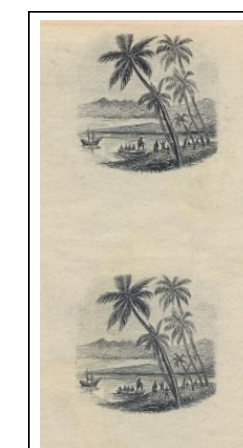
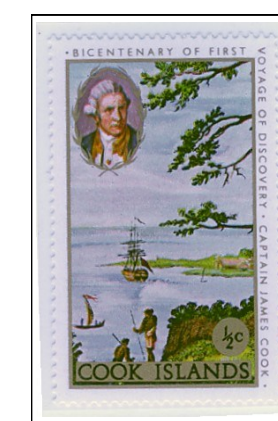
Die proof in black and green with visible guide-lines. Endorsed in pencil: "Niue", "1/2" and "lighter?".



Final artwork, watercolour on cardboard. Unsigned, unique. Ex Fournier archives. Based on Parkinson's painting: "**Matavai Bay Tahiti** from One Tree Hill, showing the **ENDEAVOUR** at anchor, and **Fort Venus**".



Sunken frame die proof in black, on thick wove paper. Rare, only two recorded examples. Ex Lady Mairi Bury and Gawaine Baillie.



Centre vignette plate proof.