

In the wake of James Cook 1728-1779

Plan of the exhibit:

1. James Cook..	8
a ..grew up in Yorkshire	3-4
b ..was part of the war with France in Atlantic Canada	5-8
c ..emerged as a surveyor and scientist in North America	9-10
2. A scientific expedition..	23
a ..prompted by the Transit of Venus	11-12
b ..which was Cook's First Voyage	13-14
c ..in the ENDEAVOUR Bark with scientific gentlemen	15-26
d ..for Tahiti in the South Seas	27-28
e ..for a rendezvous with Venus	29-33
3. In search of the unknown Great Southern Continent..	15
a ..postulated by Ptolemy	34
b ..that receded as discoveries were being made	35-48
4. In the South Seas..	16
a ..Cook rediscovers and surveys New Zealand	49-56
b ..Australia's east coast was charted	57-60
c ..a disaster was avoided and possession taken	61-62
d ..the strait between Australia and New Guinea was finally proven	63-64
5. On the second voyage in search of the Southern Continent..	28
a ..in the RESOLUTION and ADVENTURE with supernumeraries	65-74
b ..Antarctica was circumnavigated	75-76
c ..Cook visited many islands in the South Seas	77-86
d ..inhospitable islands were found on the way home	87-92
6. The Northwest Passage was an oceanic shortcut..	6
a ..across the top of North America	93
b ..away from the influence of Portugal and Spain	94-96
c ..sought after by many explorers in the past	97-98
7. On his third voyage of discovery..	20
a ..in the RESOLUTION and DISCOVERY	99-102
b ..Cook sailed for a recent French discovery	103-104
c ..familiar islands visited and new discoveries made	105-114
d ..Cook reached the American Pacific coast	115-116
e ..Cook entered the Bering Strait too late	117-118
8. Back in Hawaii..	4
a ..Cook was received almost as a deity	119-120
b ..moods changed leading to Cook's death	121-122
9. James Cook in memoriam..	6
a ..in portraits and memorials.	123-128

Number of pages in the exhibit. **128**

Legend:
In the exhibit the following notations are used:

Thematic text in Times New Roman, font 10.
Philatelic text in *Italics*, font 9.

Rare or important thematic or philatelic items
are displayed in **red frames**.

Rare or important items:

Page 2:	Centre inverted variety. Cook Islands 1932.
Page 31:	Sunken frame die proof. Niue 1920.
Page 33:	Imperf pair. New Zealand 1969.
Page 54:	Tui manuscript cancel, only recorded example. New Zealand 1909.
Page 59:	"Black omitted" variety on cover. Australia 1970.
Page 61:	Die proof, only recorded example in private hands. Australia 1966.
Page 62:	Die proof. New South Wales 1888.
Page 84:	Ile des Pins cover to New York. New Caledonia 1878.
Page 108:	Stamp size essays, unique. Niue 1930.

In January 1774 James Cook wrote in his journal:

**"not only farther than any other man has been before me,
but as far as I think it is possible for man to go"**

James Cook is widely regarded as the greatest sea explorer of all time.
He was an 18th century British mariner conducting three major scientific voyages of
discovery and exploration ranging from the Antarctic ice fields to the Bering Strait and
from the Pacific coast of North America to Australia.
He almost single-handedly disproved the existence of any great Southern Continent,
and in the process charted New Zealand and the east coast of Australia,
and put Hawaii on the map.
Naturalists collected natural history items and artists documented it for posterity.



*Inverted centre variety.
Cook Islands 1932.
A sheet of 80 was sold at the
Rarotonga post office but
uncertain how many stamps have
survived. Certificate. Rare.
Ex Sir Ron Brierley*



*Not accepted artwork, watercolour on paper with overlay, by Farrar-Bell. Unsigned but backstamped Farrar-Bell Archive.
Depicts James Cook, ENDEAVOUR and Queen Elisabeth II. GB 1968 Anniversaries issue.*

Expertised items are marked with an
"e" adjacent to the object.

A copy of the certificate is placed on the
back of the page containing the object.

Key words that relate to the theme
developed by the philatelic objects
are in **bold**.

Main references:

1. The Journals of Captain James Cook, Vol I - III. Hakluyt Society, 1988.
2. The Resolution Journal of Johann Reinhold Forster 1772-1775, Vol I - IV. Hakluyt Society, 1982.
3. Captain Cook's World. John Robson, 2001.
4. The Captain Cook Encyclopædia. John Robson, 2004.
5. Cook's Log 1976-2023. Captain Cook Society, UK.
6. The postage stamps of New Zealand, Vol V. 1967.
7. Christmas Island Local Stamps 1916 - 1938. www.roland-klinger.de



{1} James Cook was born on
27 October 1728
at **Marton-in-Cleveland**
in the north-eastern
corner of England.



Postal stationery; registered envelope. Domestic use to Lower Hutt, tied by **Marton** 4 June 1924 cds. Backstamped Lower Hutt 5 June 1924 arrival cds. The registration fee of 3d (in force 1 Aug 1920 to 28 Feb 1931) is covered by the value imprint and the domestic letter rate (in force 1 Mar 1923 to 28 Feb 1931) by the affixed stamp. Marton in New Zealand was named in 1869 to honour the birthplace of James Cook.

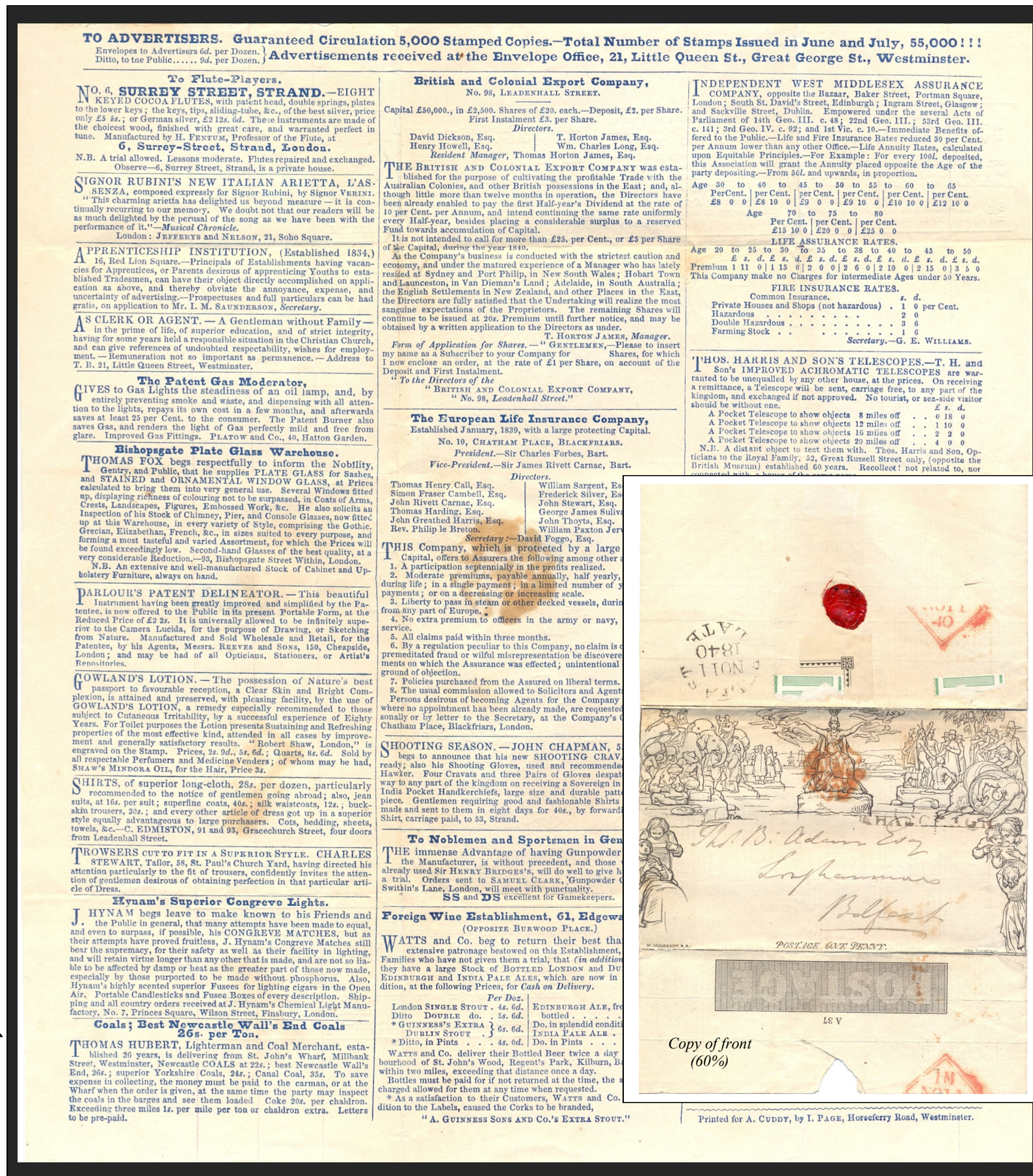
{2} At the age of 17 James entered
the **Merchant Navy**..

{3} as an apprentice on the
Whitby-collier **FREELOVE**.

{4} Cook was part of operating the
coal trade transporting
coal from Newcastle to London.



1882/85 New Zealand Sideface issue
2d lilac, advertisement on stamp
+copy of front



TO ADVERTISERS. Guaranteed Circulation 5,000 Stamped Copies.—Total Number of Stamps Issued in June and July, 55,000!!!
Envelopes to Advertisers 6d. per Dozen. } Advertisements received at the Envelope Office, 21, Little Queen St., Great George St., Westminster.
Ditto, to the Public, 9d. per Dozen.

To Flute-Players.

No. 6, SURREY STREET, STRAND.—EIGHT
KEYED COCOA FLUTES, with patent head, double springs, plates to the lower keys; the keys, tips, sliding-tube, &c., of the best silver, price only 2s 6s.; or German silver, 2s 12s. 6d. These instruments are made of the choicest wood, finished with great care, and warranted perfect in tune. Manufactured by H. FEXRUM, Professor of the Flute, at
6, Surrey-Street, Strand, London.
N.B. A trial allowed. Lessons moderate. Flutes repaired and exchanged. Observe—6, Surrey Street, Strand, is a private house.

SIGNOR RUBINI'S NEW ITALIAN ARIETTA, L'AS-
SENZA, composed expressly for Signor Rubini, by Signor VERINI.
"This charming arietta has delighted us beyond measure—it is continually recurring to our memory. We doubt not that our readers will be as much delighted by the perusal of the song as we have been by the performance of it."—*Musical Chronicle*.
London: JEFFERYS and NELSON, 21, Soho Square.

APPRENTICESHIP INSTITUTION, (Established 1834.)
16, Red Lion Square.—Principals of Establishments having vacancies for Apprentices, or Parents desirous of apprenticing Youths to established Tradesmen, can have their object directly accomplished on application as above, and thereby obviate the annoyance, expense, and uncertainty of advertising.—Prospectuses and full particulars can be had gratis, on application to Mr. I. M. SAUNDERS, Secretary.

AS CLERK OR AGENT.—A Gentleman without Family—
in the prime of life, of superior education, and of strict integrity, having for some years held a responsible situation in the Christian Church, and can give references of undoubted respectability, wishes for employment.—Remuneration not so important as permanence.—Address to T. B. 21, Little Queen Street, Westminster.

The Patent Gas Moderator,
GIVES to Gas Lights the steadiness of an oil lamp, and, by entirely preventing smoke and waste, and dispensing with all attention to the lights, repays its own cost in a few months, and afterwards saves at least 25 per Cent. to the consumer. The Patent Burner also saves Gas, and renders the light of Gas perfectly mild and free from glare. Improved Gas Fittings. PLATOW and Co., 49, Hatton Garden.

Bishopgate Plate Glass Warehouse.
THOMAS FOX begs respectfully to inform the Nobility, Gentry, and Public, that he supplies PLATE GLASS, for Sashes, and STAINED and ORNAMENTAL WINDOW GLASS, at prices calculated to bring them into very general use. Several Windows fitted up, displaying richness of colouring not to be surpassed, in Coats of Arms, Crests, Landscapes, Figures, Embossed Work, &c. He also solicits an Inspection of his Stock of Chimney, Pier, and Console Glasses, now fitted up at this Warehouse, in every variety of Style, comprising the Gothic, Grecian, Elizabethan, French, &c., in sizes suited to every purpose, and forming a most tasteful and varied Assortment, for which the Prices will be found exceedingly low. Second-Hand Glasses of the best quality, at a very considerable Reduction.—23, Bishopgate Street Within, London.
N.B. An extensive and well-manufactured Stock of Cabinet and Upholstery Furniture, always on hand.

PARLOUR'S PATENT DELINEATOR.—This beautiful
Instrument having been greatly improved and simplified by the Patentee, is now offered to the Public in its present Portable Form, at the Reduced Price of £2 2s. It is universally allowed to be infinitely superior to the Camera Lucida, for the purpose of Drawing, or Sketching from Nature. Manufactured and Sold Wholesale and Retail, for the Patentee, by his Agents, Messrs. REEVE and SONS, 150, Cheapside, London; and may be had of all Opticians, Stationers, or Artist's Repositories.

GOWLAND'S LOTION.—The possession of Nature's best
passport to favourable reception, a Clear Skin and Bright Complexion, is attained and preserved, with pleasing facility, by the use of **GOWLAND'S LOTION**, a remedy especially recommended to those subject to Cutaneous Irritability, by a successful experience of Eighty Years. For Toilet purposes the Lotion presents Sustaining and Refreshing properties of the most effective kind, attended in all cases by improvement and generally satisfactory results. "Robert Shaw, London," is engraved on the Stamp. Prices, 2s. 6d., 1s. 6d.; Quarts, 8s. 6d. Sold by all respectable Perfumers and Medicine Vendors; of whom may be had, **SHAW'S MINDORA OIL**, for the Hair, Price 3s.

SHIRTS, of superior long-cloth, 28s. per dozen, particularly recommended to the notice of gentlemen going abroad; also, jean suits, at 16s. per suit; superfine coats, 40s.; silk waistcoats, 12s.; buckskin trousers, 20s.; and every other article of dress got up in a superior style equally advantageous to large purchasers. Coats, bedding, sheets, towels, &c.—C. EDMISTON, 91 and 93, Gracechurch Street, four doors from Leadenhall Street.

TROWERS CUT TO FIT IN A SUPERIOR STYLE. CHARLES
STEWART, Tailor, 58, St. Paul's Church Yard, having directed his attention particularly to the fit of trousers, confidently invites the attention of gentlemen desirous of obtaining perfection in that particular article of Dress.

Hynam's Superior Congreve Lights.
J. HYNAM begs leave to make known to his Friends and the Public in general, that many attempts have been made to equal, and even to surpass, if possible, his CONGREVE MATCHES, but as their attempts have proved fruitless, J. Hynam's Congreve Matches still bear the supremacy, for their safety as well as their facility in lighting, and will retain virtue longer than any other that is made, and are not so liable to be affected by damp or heat as the greater part of those now made, especially by those purported to be made without phosphorus. Also, Hynam's highly scented superior Fuses for lighting cigars in the Open Air. Portable Candlesticks and Fusee Boxes of every description. Shipping and all country orders received at J. Hynam's Chemical Light Manufactory, No. 7, Princes Square, Wilson Street, Finsbury, London.

Coals; Best Newcastle Wall's End Coals
26s. per Ton.

THOMAS HUBERT, Lighterman and Coal Merchant, established 26 years, is delivering from St. John's Wharf, Millbank Street, Westminster, Newcastle COALS at 22s.; best Newcastle Wall's End, 26s.; superior Yorkshire Coals, 24s.; Canal Coal, 35s. To save Wharf when the order is given, at the same time the party may inspect the coals in the barges and see them loaded. Coke 20s. per chaldron. Exceeding three miles 1s. per mile per ton or chaldron extra. Letters to be pre-paid.

British and Colonial Export Company,
No. 98, LEADENHALL STREET.
Capital £50,000, in £250. Shares of £20. each.—Deposit, £2. per Share.
First Instalment £3. per Share.

Directors.
David Dickson, Esq. T. Horton James, Esq.
Henry Howell, Esq. Wm. Charles Long, Esq.
Resident Manager, Thomas Horton James, Esq.

THE BRITISH AND COLONIAL EXPORT COMPANY was established for the purpose of cultivating the profitable Trade with the Australian Colonies, and other British possessions in the East; and, although little more than twelve months in operation, the Directors have been already enabled to pay the first Half-year's Dividend at the rate of 10 per Cent. per Annum, and intend continuing the same rate uniformly every Half-year, besides placing a considerable surplus to a reserved Fund towards accumulation of Capital.
It is not intended to call for more than 22s. per Cent., or £5 per Share of the Capital, during the year 1840.

As the Company's business is conducted with the strictest caution and economy, and under the matured experience of a Manager who has lately resided at Sydney and Port Philip, in New South Wales; Hobart Town and Launceston, in Van Dieman's Land; Adelaide, in South Australia; the English Settlements in New Zealand, and other Places in the East, the Directors are fully satisfied that the Undertaking will realize the most sanguine expectations of the Proprietors. The remaining Shares will continue to be issued at 20s. Premium until further notice, and may be obtained by a written application to the Directors as under.

T. HORTON JAMES, Manager.
Form of Application for Shares.—"GENTLEMEN,—Please to insert my name as a Subscriber to your Company for Shares, for which I now enclose an order, at the rate of £1 per Share, on account of the Deposit and First Instalment.

"To the Directors of the
"BRITISH AND COLONIAL EXPORT COMPANY,
"No. 98, Leadenhall Street."

The European Life Insurance Company,
Established January, 1839, with a large protecting Capital.
No. 10, CHATHAM PLACE, BLACKFRIARS.
President.—Sir Charles Forbes, Bart.
Vice-President.—Sir James Rivett Carnac, Bart.

Directors.
Thomas Henry Call, Esq. William Sargent, Esq.
Simon Fraser Campbell, Esq. Frederick Silver, Esq.
John Rivett Carnac, Esq. John Stewart, Esq.
Thomas Harding, Esq. George James Sulist, Esq.
John Greathed Harris, Esq. John Thoyts, Esq.
Rev. Philip le Breton. William Paxton Jerv.

THIS COMPANY, which is protected by a large Capital, offers to Assurers the following among other advantages:
1. A participation septennially in the profits realized.
2. Moderate premiums, payable annually, half yearly, during life; in a single payment; in a limited number of years; or on a decreasing or increasing scale.
3. Liberty to pass in steam or other decked vessels, during from any part of Europe.
4. No extra premium to officers in the army or navy, service.
5. All claims paid within three months.

6. By a regulation peculiar to this Company, no claim is premeditated fraud or wilful misrepresentation be discovered on which the Assurance was effected; unintentional ground of objection.
7. Policies purchased from the Assured on liberal terms.
8. The usual commission allowed to Solicitors and Agents. Persons desirous of becoming Agents for the Company, where no appointment has been already made, are requested to apply or by letter to the Secretary, at the Company's Office, Chatham Place, Blackfriars, London.

SHOOTING SEASON.—JOHN CHAPMAN, 58, Leadenhall Street, announces that his new SHOOTING CRAW ready; also his Shooting Gloves, used and recommended by Hawker. Four Cravats and three Pairs of Gloves despatched by way to any part of the Kingdom on receiving a Sovereign in India Pocket Handkerchiefs, large size and durable pattern piece. Gentlemen requiring good and fashionable Shirts, made and sent to them in eight days for 40s., by forward Shirt, carriage paid, to 53, Strand.

To Noblemen and Sportsmen in General.
The immense Advantage of having Gunpowder the Manufacturer, is without precedent, and those already used by HENRY BRIDGES, will well to give a trial. Orders sent to SAMUEL CLARK, Gunpowder Office, Switain's Lane, London, will meet with punctuality. **SS** and **DS** excellent for Gamekeepers.

Foreign Wine Establishment, 61, Edgware
(OPPOSITE BURWOLD PLACE.)

WATTS and Co. beg to return their best and extensive patronage bestowed on this Establishment, Families who have not given them a trial, that in addition they have a large Stock of BOTTLED LONDON and DUBLIN EDINBURGH and INDIA PALE ALES, which are now in dition, at the following Prices, for Cash on Delivery.

Per Doz.
London SINGLE STOUT . 4s. 6d.
Ditto DOUBLE do. . 5s. 6d.
* GUINNESS'S EXTRA . 6s. 6d.
DUBLIN STOUT . 6s. 6d.
* Ditto, in Pints . 4s. 6d.

EDINBURGH ALE, bottled . 4s. 6d.
Do. in splendid condition . 5s. 6d.
INDIA PALE ALE . 4s. 6d.
Do. in Pints . 4s. 6d.

WATTS and Co. deliver their Bottled Beer twice a day, from St. John's Wood, Regent's Park, Kilburn, B. within two miles, exceeding that distance once a day. Bottles must be paid for if not returned at the time, the charge allowed for them at any time when requested.

* As a satisfaction to their Customers, WATTS and Co. dition to the Labels, caused the Corks to be branded, "A. GUINNESS SONS AND CO.'S EXTRA STOUT."

INDEPENDENT WEST MIDDLESEX ASSURANCE
COMPANY, opposite the Bazaar, Baker Street, Portman Square, London; South St. David's Street, Edinburgh; Ingram Street, Glasgow; and Sackville Street, Dublin. Empowered under the several Acts of Parliament of 14th Geo. III. c. 48; 22nd Geo. III. c. 53rd Geo. III. c. 141; 3rd Geo. IV. c. 92; and 1st Vic. c. 10.—Immediate Benefits offered to the Public.—Life and Fire Insurance Rates reduced 30 per Cent. per Annum lower than any other Office.—Life Annuity Rates, calculated upon Equitable Principles.—For Example: For every 100l. deposited, this Association will grant the Annuity placed opposite the Age of the party depositing.—From 50l. and upwards, in proportion.

Age	30 to 40	40 to 45	45 to 50	50 to 55	55 to 60	60 to 65
Per Cent.	per Cent.	per Cent.	per Cent.	per Cent.	per Cent.	per Cent.
£8 0 0	£8 10 0	£9 0 0	£9 10 0	£10 0 0	£10 10 0	£12 10 0

LIFE ASSURANCE RATES.
Age 20 to 25 to 30 to 35 to 40 to 45 to 50
£ s. d. £ s. d. £ s. d. £ s. d. £ s. d. £ s. d. £ s. d.
Premium 1 11 0 | 1 15 0 | 2 0 0 | 2 6 0 | 2 10 0 | 2 15 0 | 3 5 0
This Company make no Charges for intermediate Ages under 50 Years.

FIRE INSURANCE RATES.
Common Insurance, s. d.
Private Houses and Shops (not hazardous) . 1 0 per Cent.
Hazardous 2 0
Double Hazardous 3 6
Farming Stock 1 6
Secretary.—G. E. WILLIAMS.

THOS. HARRIS AND SON'S TELESCOPES.—T. H. and
Son's IMPROVED ACROMATIC TELESCOPES are warranted to be unequalled by any other house, at the prices. On receiving a remittance, a Telescope will be sent, carriage free, to any part of the kingdom, and exchanged if not approved. No tourist, or sea-side visitor should be without one.

A Pocket Telescope to show objects 8 miles off . . . £ s. d.
A Pocket Telescope to show objects 12 miles off . . . 0 18 0
A Pocket Telescope to show objects 16 miles off . . . 2 0 0
A Pocket Telescope to show objects 20 miles off . . . 4 0 0
N.B. A distant object to test them with. Thos. Harris and Son, Opticians to the Royal Family, 52, Great Russell Street only, (opposite the British Museum) established 60 years. Recollect! not related to, nor suspected with a house of the same name.



Copy of front
(60%)

Printed for A. CUDDY, by I. PAGE, Horseferry Road, Westminster.

1840 GB 1d A37 Mulready "A. Cuddy" multiple advertising lettersheet with red-brown Maltese Cross.
Used from Dublin to Belfast, Ireland with square Dublin dispatch cancel Nov 11 1840 and circular Belfast/Late arrival cancel Nov 11 1840.
Advert for Best Newcastle Coals (lower left corner). Two examples of this advert recorded to date.

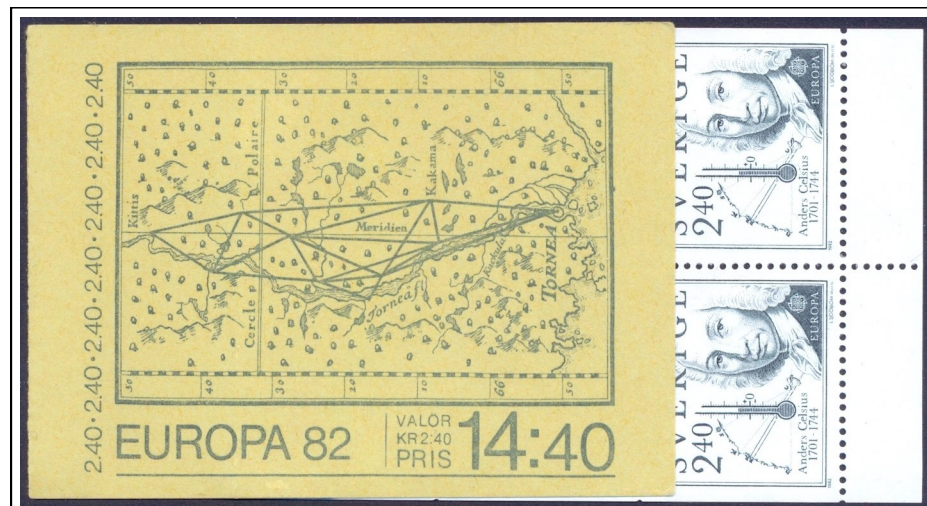


Postal stationery; postal card. 1667 Dutch map featuring the **Gulf of St. Lawrence**. Louisbourg indicated by red arrow. 1997

{1} In 1755 Cook signed on for the Royal Navy and in 1758 he was in Canada fighting the French in the Seven Years War. The French possessions were dependent upon control of the **Gulf of St. Lawrence**, the **St. Lawrence River** and Quebec.

{2} To wrest the control of the St. Lawrence River two forts had to be attacked. The first was Louisbourg (red arrow) at the mouth of the Gulf of St. Lawrence and then Quebec itself (next page).

{3} In July 1758 **Fort Louisbourg** was captured but as the season was well advanced it was decided to postpone the assault on Quebec.

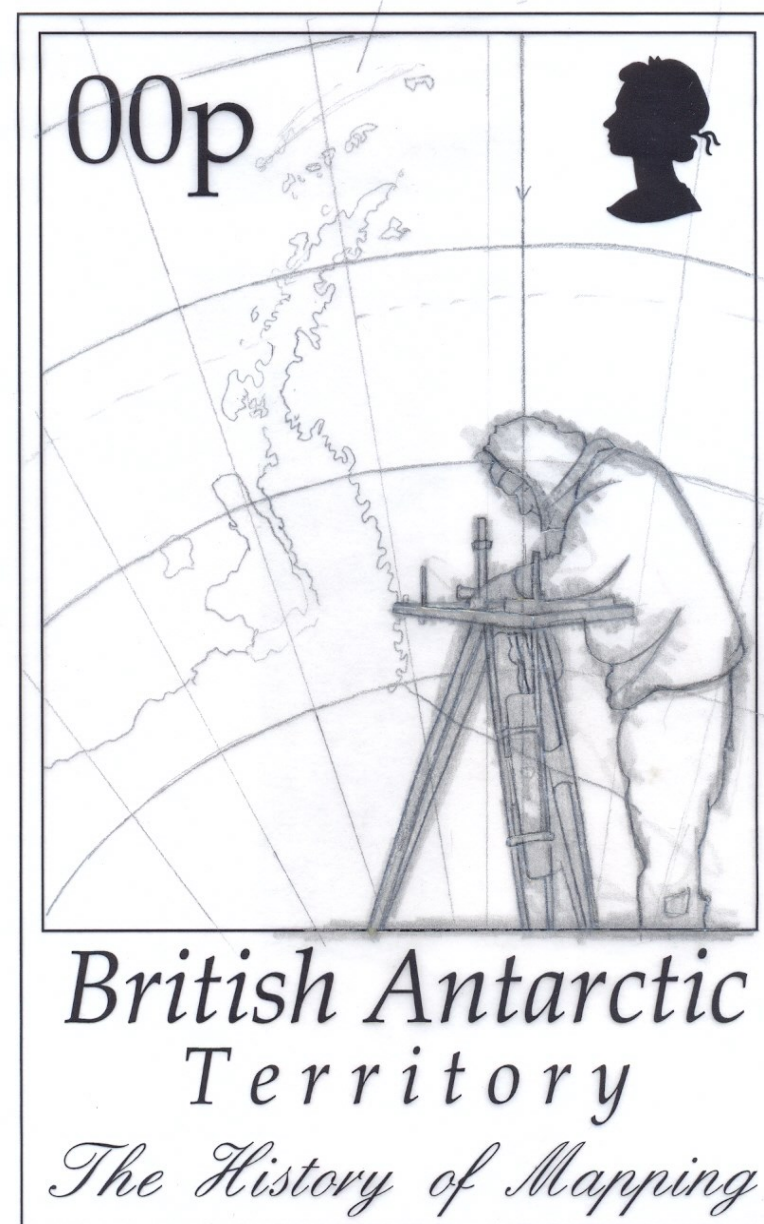


Postage stamp booklet with contents. 1982

{4} Shortly after the capture of Fort Louisbourg Cook met Army Surveyor Samuel Holland (1728-1801). Cook was impressed with the skills of the young man and in the following months Cook learned new surveying techniques such as **triangulation** and how to use the **plane table**.

(2)

For Janet Thomson



Further South?



Original artwork in pencil and ink on tracing paper for the 1997 British Antarctic Territory issue - *The History of Mapping*. Signed by the artist Nick Shewring. Unique. Total size 297 x 210 mm (A4). Features a scientist using a **plane table**.

Crown Agents Stamp Bureau acted for and on behalf of the Administration of British Antarctic Territory in issuing the stamp (left) which was part of a set of five. Janet Thomson was Head of the Mapping and Geographic Centre at the British Antarctic Survey working closely with the artist and Crown Agents in designing the stamp(s).

The Siege of Quebec and the islands of Saint Pierre and Miquelon surveyed

{1} As a prelude to the assault on Quebec the following year the British dispatched troops burning and destroying French settlements that might send supplies to Quebec.
One of these settlements was **Gaspé**.



{2} Cook brought his new skills to good use and prepared a **map of Gaspé Harbour** which was published later that year.



{3} **Jacques Cartier** (1491-1557) was born in **St. Malo** in Brittany. He discovered the St. Lawrence River in 1534..

{4} .and later **Quebec** was founded on the **northern shore** of the river.



{5} Quebec comes from the **Algonquin** word "Kébec" which means "where the **river narrows**".



{6} Cook took part in the **Siege of Quebec** which lasted all summer of 1759.



as issued



Engraver's die proof, signed by J. Combet.

Final stage proof from the hardened die before acceptance by the Postal Administration. 29 mm official seal inscribed "Imprimerie des Timbres-Poste - France". Printed in 5 (or 6) colours, 3-8 in each colour with a total of up to 28.



{7} The **Battle of Quebec** took place on Sept 13th 1759 on the **Plains of Abraham** just outside **Quebec**.



{8} The British general **James Wolfe** (1727-59) was killed in the battle..



{9} .and so was the French general **de Montcalm** (1712-59).



{10} At the end of the war the British returned **Saint Pierre and Miquelon**, two islands off the coast of Newfoundland, to France.

{11} Cook made a speedy survey and produced this **map**..



part of Cook's map



{12} .before the islands were handed back to the first French **Governor Francois-Gabriel d'Angeac** (1708-82) in 1763.



Trial colour plate proof

as issued



Plate proof

{1} Newfoundland is a large island off the east coast of Canada.

{2} Leif Ericson (c970-c1020) made the first European visit to the island in the 11th century..

{3} .and John Cabot (c1450-c1500) made landfall in 1497.



{6} The island was of great economical importance to Britain because the Grand Banks was one of the world's richest **fishing grounds**, especially supporting **cod**. The islands shoreline was however little known..



Cash-On-Delivery envelope/tag. COD is a type of transaction in which the recipient paid for a good at the time of delivery. The payment made went into an account specified by the shipper.



Die proof in issued colour with production number

{4} In 1583 **Humphrey Gilbert** (c1539-83) visited Newfoundland in search of the Northwest Passage..



{5} .and he **claimed the island** for Britain. It is considered **Britain's oldest colony**.

{7} .and charting Newfoundland was Cook's next job. He charted the island between 1763 and 1767 and produced a very accurate **map of the island**.



Complete design plate proof

{8} Cook bestowed many names but the township **Cook's Harbour** has been named after him.

{9} On August 5th 1766 Cook observed an **eclipse of the sun**..



{10} .and his written report was submitted to the **Royal Society** in London.

{11} This, and his accurate charts, showed that he had emerged as a surveyor and astronomer. It brought him to the attention of the Royal Society as a suitable commander for a voyage planned.

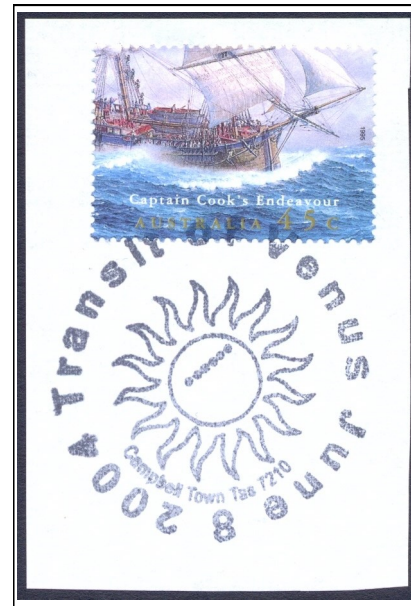




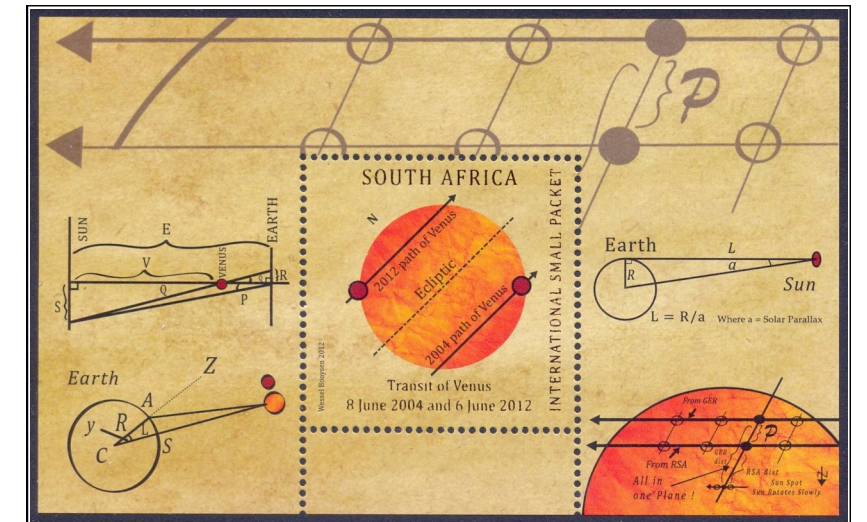
Registered cover to St. Johns, NFL. Tied by **Cook's Harbour** cds Mar 3 (62).
Postage 25c: Domestic letter rate 5c (1.4.1954 - 31.11.1968) + registration fee 20c

{1} Observing the **Transit of Venus** was the primary aim of Cook's First Voyage.

{2} A Venus Transit is a celestial event during which the "inner planet" **Venus**, the Earth and the Sun are aligned and Venus is seen as a small black dot passing **across the face of the Sun**.



{5} .and the British astronomer **Edmund Halley** (1656-1742) described in 1691 how transits..



{6} .could be used to calculate the **distance from the Earth to the Sun**.

{3} The Persian polymath **Avicenna** (c980-1037) was probably the first to describe a transit. He claimed to have observed Venus as a black spot on the Sun; the observation was undated but it could have been the transit in 1034.

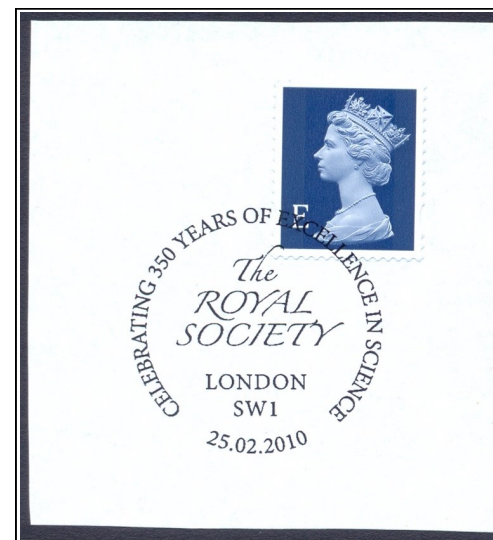


{4} The German astronomer **Johannes Kepler** (1571-1630) was however the first to predict a Venus Transit scientifically..



as issued

{8} Scientists from the **Royal Society** in London had calculated that a place in the South Pacific would be a vantage point from which to observe the transit predicted for June 1769.



{10} .perfectly located in the **path of Venus**.
Tahiti was chosen from which to observe the transit.



Meter cancel from Frösön 2009. Type D4.2. Francotyp-Postalia, multi value

{9} The British explorer **Samuel Wallis** (1728-95) had returned in 1768 from a voyage round the world having **discovered** a tropical island in the South Pacific. It was the island of **Tahiti**..



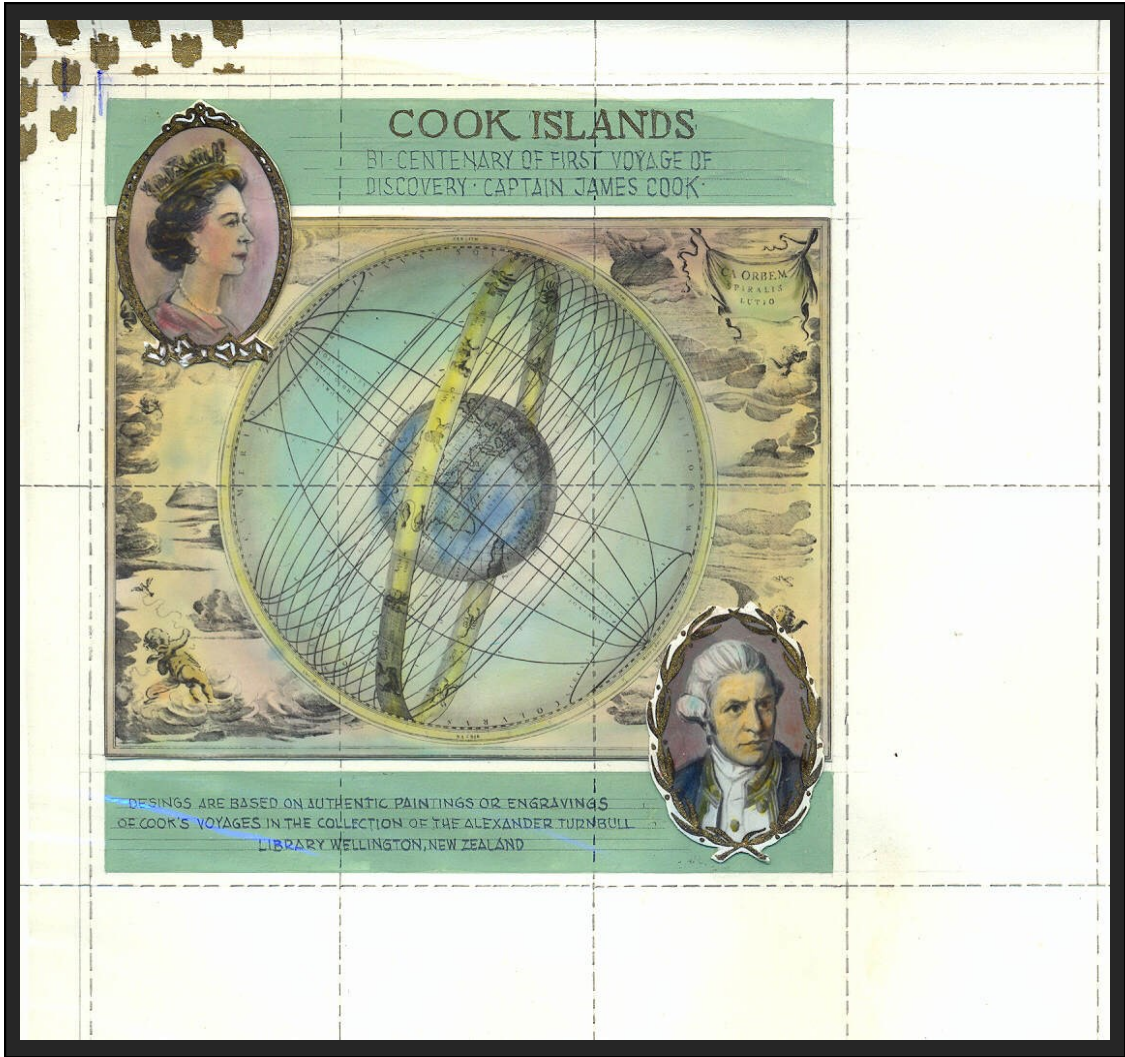
Trial colour plate proof with colour code in pencil

{11} Venus Transits occurs in sequences of 8 - 121½ - 8 - 105½ years. The latest transit occurred in 1761 so the transit in 1769 would be the last opportunity for many years. It was important that the precisely timed observations had to be made from as widely separated latitudes on the Earth's surface as possible.

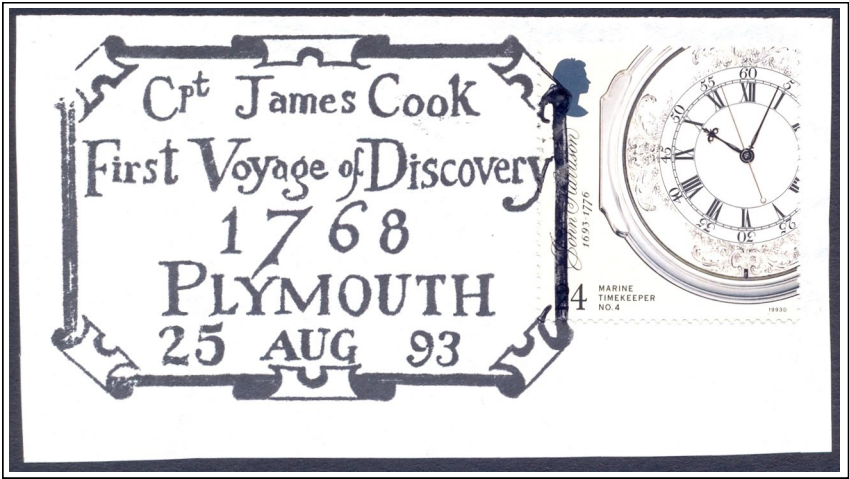
{12} The Hungarian astronomer **Maximilian Hell** (1720-92) travelled to the high northern latitudes in Norway, and Cook was selected to lead the scientific expedition to the South Pacific.



Artist's drawing, acrylic on art paper. Artist F. L. Lamosas. Unsigned, unique. 1981 Burundi 350th Death Anniversary of Johannes Kepler issue. Ex Fournier archive



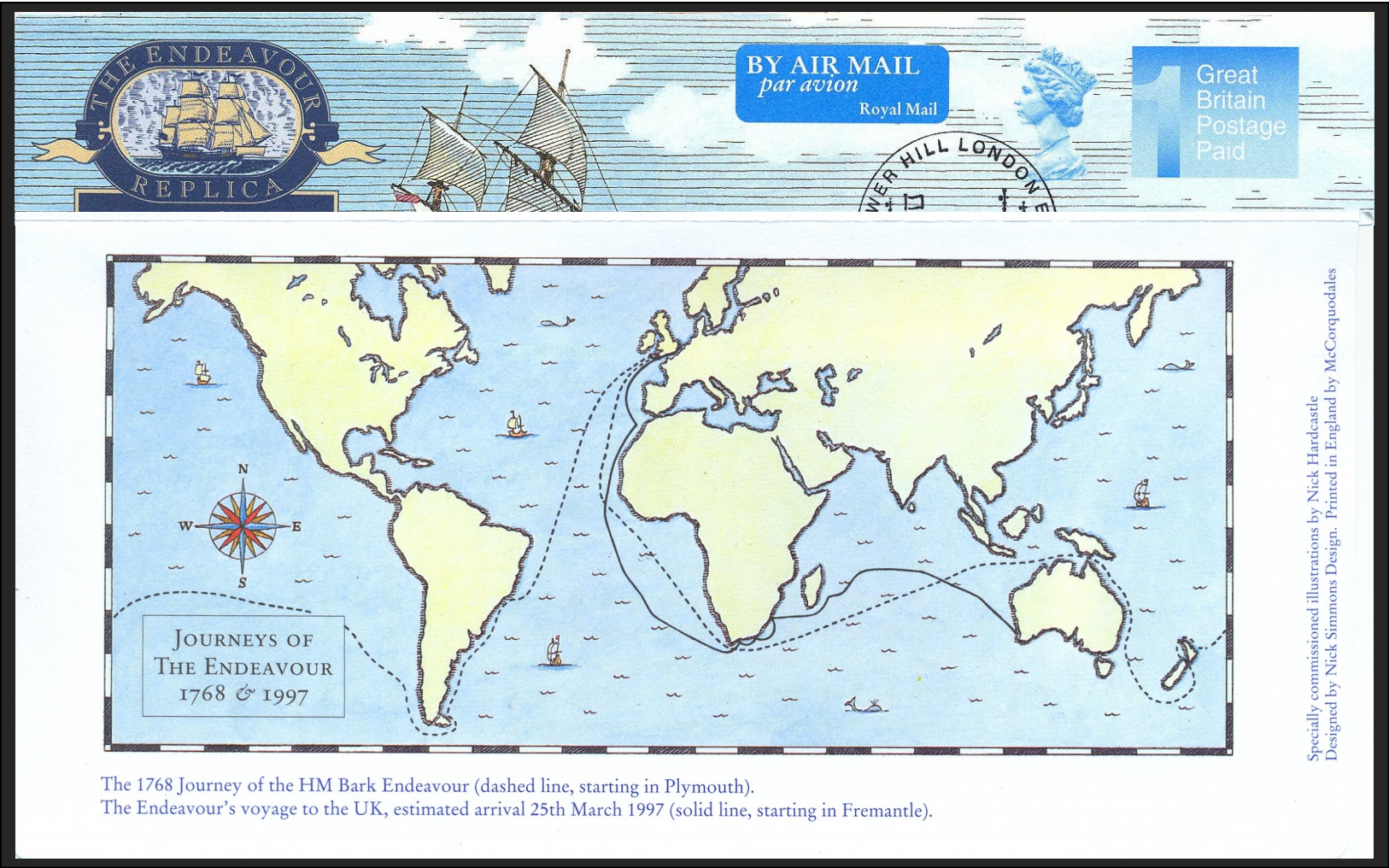
{3} **James Cook** was selected to command the expedition and on August 25th 1768 (civil time) he departed Plymouth on his **First Voyage of Discovery..**



James Cook had the rank of lieutenant on the First Voyage and was promoted to captain after the voyage.



{4} .which was to last for almost three years and take him **round the world.**



The 1768 Journey of the HM Bark Endeavour (dashed line, starting in Plymouth).
The Endeavour's voyage to the UK, estimated arrival 25th March 1997 (solid line, starting in Fremantle).

Postal stationery; aerogramme (reverse) commemorating the British voyage of ENDEAVOUR Replica (p.18) in 1997. The dashed line shows the journey of James Cook 1768-71. Copy of front (top).

{1} A second objective of the voyage was to search for the Southern Continent (Terra Australis).

{2} The fabled continent was imagined to counteract the land masses in the Northern Hemisphere and appeared on many mapmakers **Mappa Mundi** as a large Pole-encircling continent.



Mappa Mundi by Abraham Ortelius (1527-98)

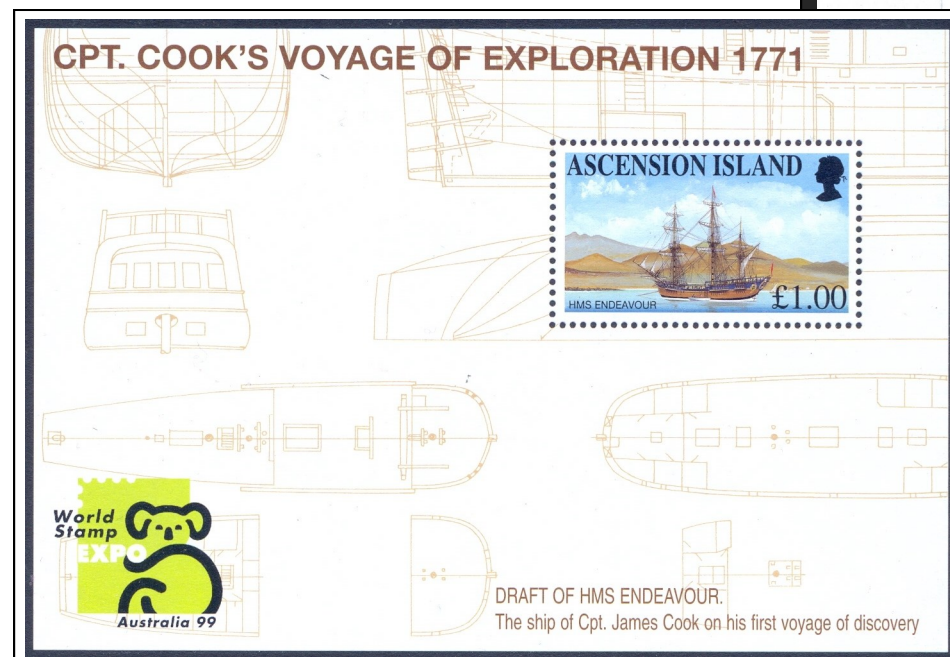


{1} A Whitby collier was selected for the voyage. It was the **Earl of PEMBROKE** later renamed **ENDEAVOUR Bark**. In the 18th century the term bark was used by the Royal Navy for a 3-masted, flat-bottomed ship.

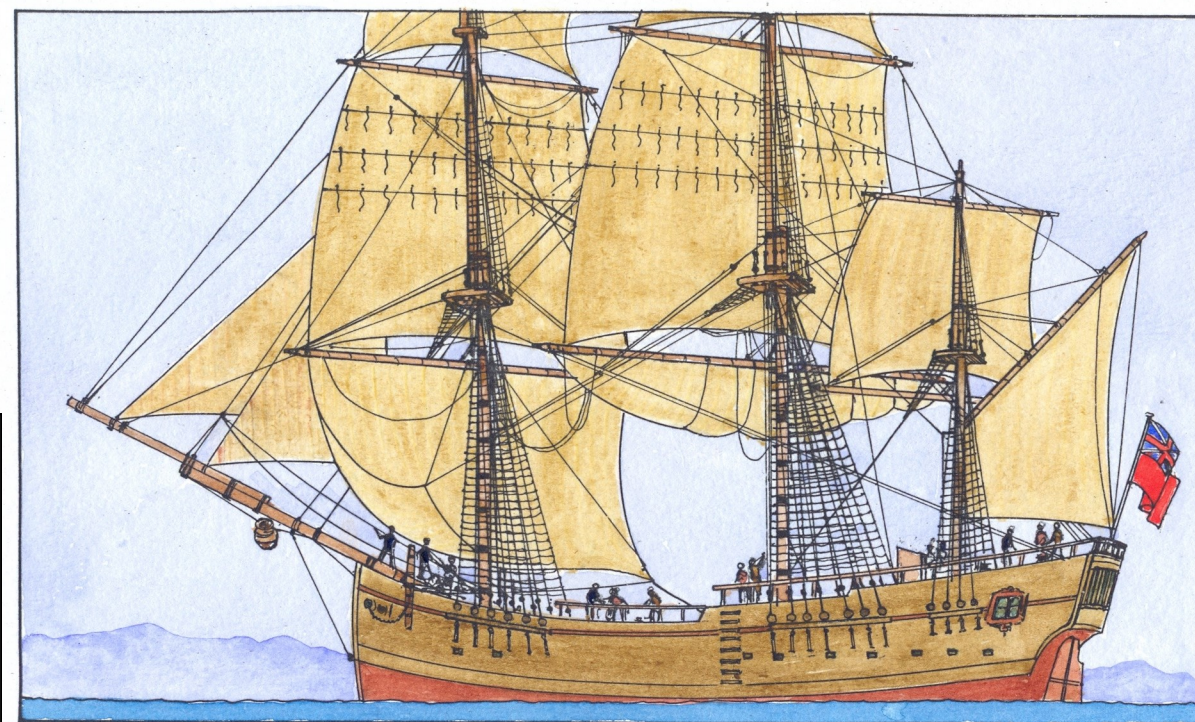


"The Bark, **Earl of Pembroke**, later Endeavour, leaving Whitby Harbour in 1768". Part of painting attributed to T. Luny, c1790

{3} ENDEAVOUR was ideal for the voyage ahead. It was a broad and **flat-bottomed ship** with a shallow draft..



{4} .and could sail close to shore for mapping and easily being **beached for repair**.

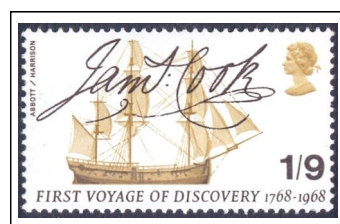


70c New Zealand



Original artwork, watercolour on art paper. Unsigned. Acquired from the archive of the designer Geoff Fuller. Total size 210 x 297 mm. 1990 New Zealand Heritage Ships issue. The stamp was issued with 50c face value.

{1} The ENDEAVOUR **stern** was decorated with carvings. She had four stern windows and a middle "window" which was a dummy covering the rudder post.

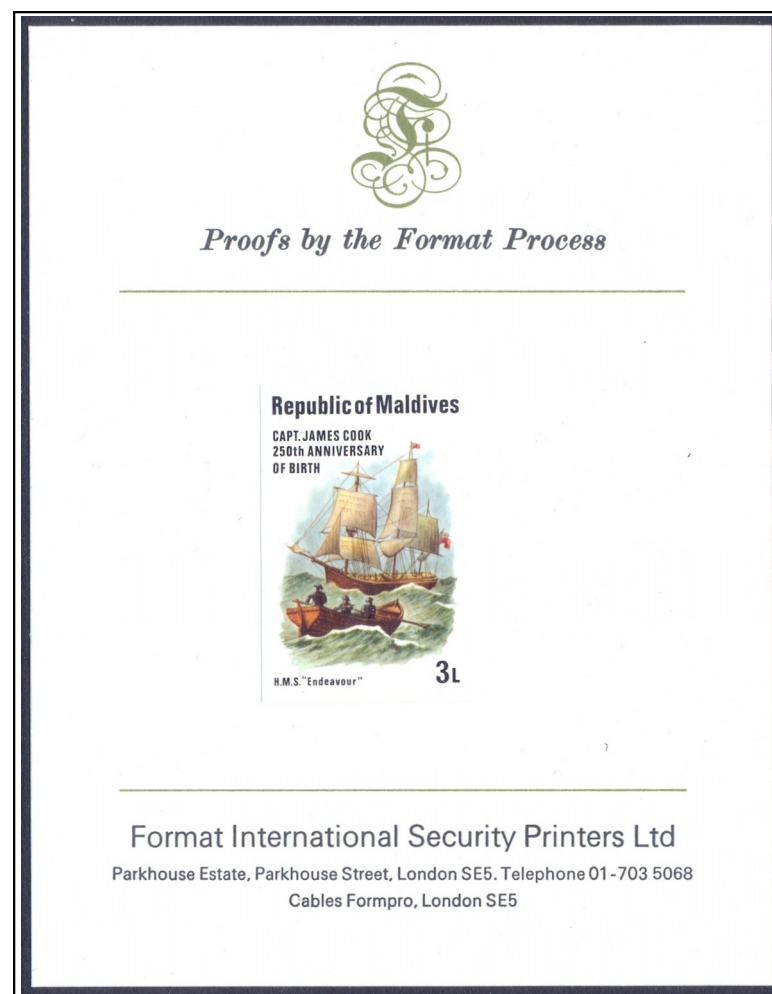


{3} .and Cook was directed to carry **cork** jackets (life-jackets) on the ENDEAVOUR.



Fancy cancel. New York City segmented **cork** cancels. Cover from New York to Montreal, Canada. Backstamped arrival cds Montreal Sept 9 1863. Postage 10c = cross-border cover rate in 1863.

{2} ENDEAVOUR carried **small boats**..



Master proof cut to stamp size and affixed to printer's presentation card. Captain Cook's discovery of Hawaii issue. Maldives 1978

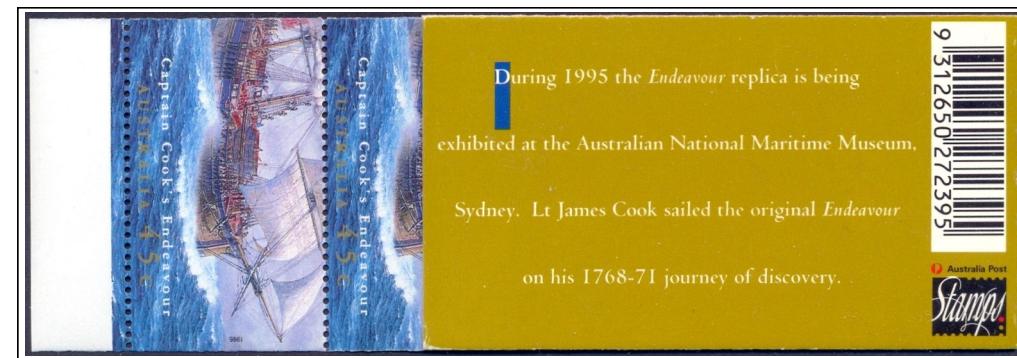
{7} Worldwide two settlements/communities are named after Cook's ENDEAVOUR.

{8} **Endeavour Hills** is a suburb in Melbourne, Australia and in 1970 the name was coined in honour of the 200th anniversary of Cook's arrival in Botany Bay (p.57).

A post office was opened on September 5th 1983. Due to the delayed arrival of the proper datestamp a Relief no 88 datestamp was in use up to December 16 1983 when the Endeavour Hills postmark was introduced. Philatelic.



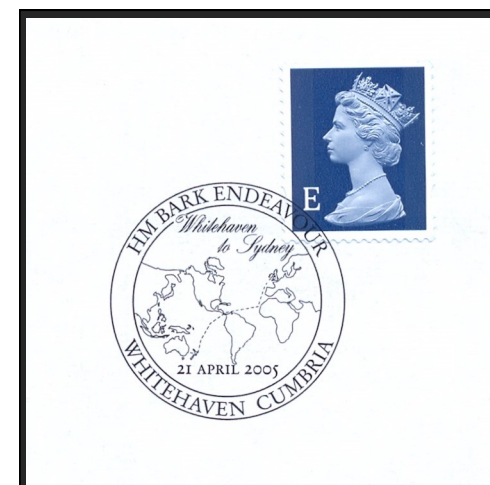
{4} In 1993 a replica of Cook's original ENDEAVOUR was launched in Australia. The **ENDEAVOUR Replica** is a museum ship based in Sydney, Australia.



Postage stamp booklet (reverse). 1995

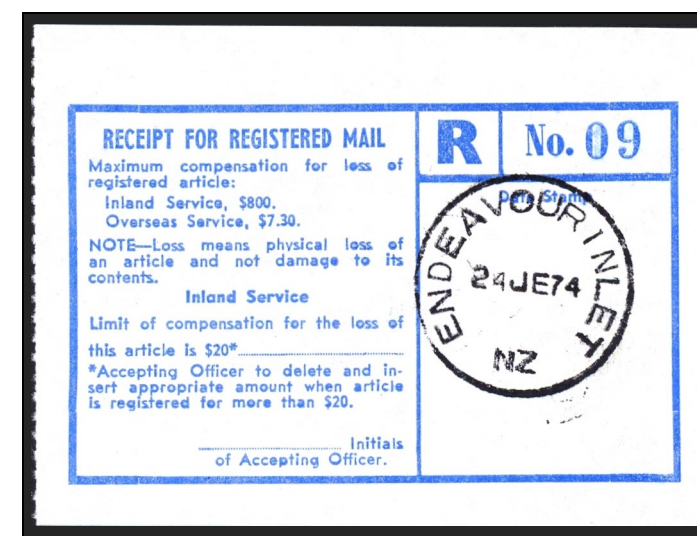
{5} From Oct 1996 to May 2000 the ENDEAVOUR Replica circumnavigated the globe and **visited Whitby** in 1997. (see aerogramme p.14)

{6} A second trip round the world started in February 2002 and finished April 2005 in Sydney.



{9} On New Zealand's South Island a small farming community is named **Endeavour Inlet**.

A post office opened 1 May 1885 and closed 1976. The first datestamp used was inscribed **Endr Inlet**.



Certificate of posting form supplied with the date of posting provided a proof that the item had been posted.

Joseph Banks was the chief naturalist



Unadopted essay, original preliminary pencil drawing on tracing paper by James Berry. Shows a portrait of **Joseph Banks** and raising the flag at Queen Charlotte Sound, New Zealand. New Zealand Cook Bicentenary issue, 1969. Issued stamp below, left.

{1} Supernumeraries were not part of the ship's company but consisted of naturalists, artists, astronomers etc.
The twenty-five-year-old naturalist **Joseph Banks** (1743-1820) was the scientific leader of the expedition.



As issued, "embossed head omitted" variety.
Portrait medallion "Joseph Banks" modelled 1775-9 by John Flaxman for J. Wedgwood & Sons, UK + ENDEAVOUR.

{2} On the voyage the naturalists collected many plants and animals never before seen by Europeans.
It is estimated that they brought more than 1300 new species of flowers back to England.

Red beech



Dillenia alata
after sketch by Parkinson

Wild rosella



Hibiscus meraukensis
after sketch by Parkinson

{3} **Banksia** is a genus of trees or woody shrubs containing over 170 species, all but one indigenous to Australia.

{4} Two of the 5 species of **Banksia** collected by Banks and co-workers are displayed.

{5} The genus **Banksia** is named in honour of Joseph Banks.



Copy of reverse (75%, cropped)



Presentation die proof in issued colour, mounted in sunken frame.
Reverse "PMG" (~~Postmaster-General~~ C. W. Davidson) and "16-3-60".
Ten proofs prepared, one of which is in the Royal Collection.

Postal stationery: prestamped envelope. **Coast Banksia** (*Banksia integrifolia*) among the flowers framing the portrait of Joseph Banks.



Joseph Banks and his legacy



2nd weight-class (½-1oz) stampless entire to New York. Endorsed "Kangaroo" and black "48" and "6/Cents" markings on front. Entire dated London 26 Apr 1859 and backstamped Liverpool cds 27 Apr 1859. Correct postage 48c. The international rate for ½oz under the US-UK Convention of 1848 was 24c (3c UK inland rate+ 16c transatlantic rate +5c US inland rate). The "6/cents" was an accounting mark applied in Liverpool and meant 6c payable to the British post office. The "SS Kangaroo" was a passenger ship operating the Inman Line between Liverpool and New York. Arrival in New York was on May 11th 1859 (no arrival cds).

{1} In Australia Joseph Banks made the first documented sighting of a **kangaroo**.
Banks is also credited with discovering and introducing the **eucalyptus** flower to the Western world.



Leaf beetle
Chrysomela banksi



Postage stamp booklet with contents. 1982

{2} Several species have been named in honour of Banks..

{6} After the voyage Banks became a celebrity and an influential man in British society. In 1778 he was elected President of **Royal Society**..

Red-tailed black Cockatoo



Calyptorhynchus banksii

Buff-bellied Monarch

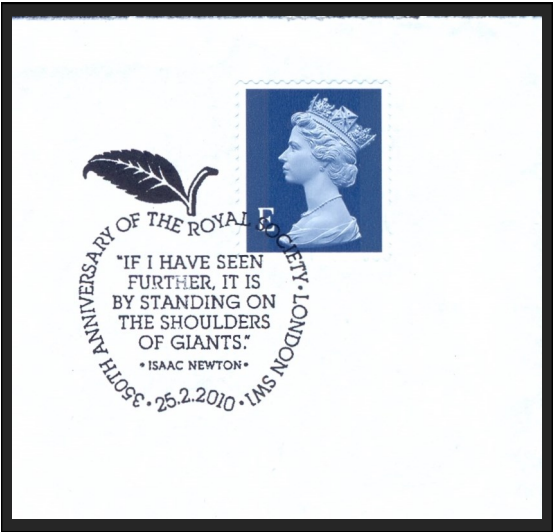


Neolalage banksiana

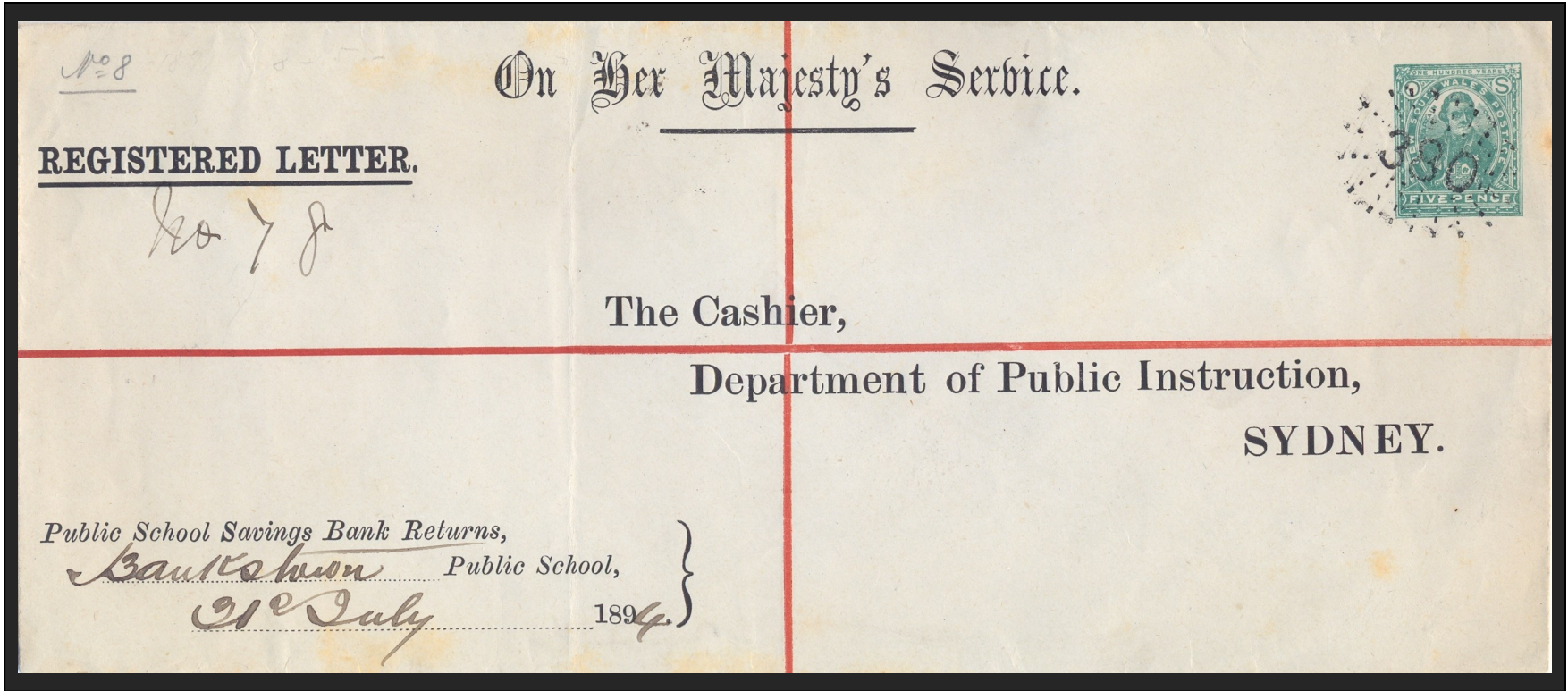
Red Silky Oak



Grevillea banksii



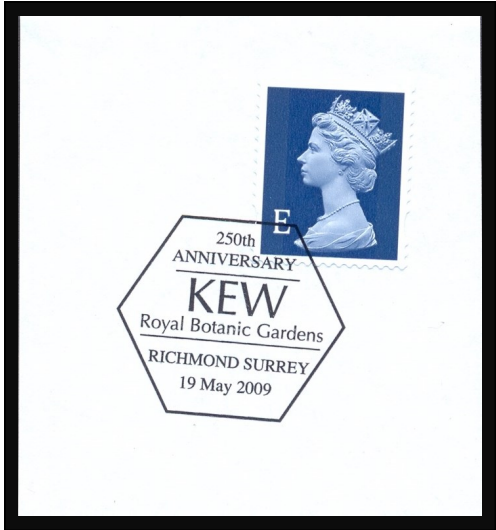
{7} .and he was also involved in Developing the **Kew Gardens** (Botanical Gardens) in London.



Postal stationery, registration envelope. Public School Savings Bank Returns to Sydney 31st July 1894. Tied by numeral cancel "380", **Bankstown**. Postage 5d = 2d inland letter rate + 3d registration fee. 3600 envelopes issued September 21, 1892.



Piece from pre-stamped envelope featuring *B. serrata* (Saw Banksia).



Daniel Solander, a pupil of Carl Linnaeus in Uppsala, accompanied Banks on the voyage

{1} The Swedish botanist **Daniel Solander** (1733-82) accompanied Joseph Banks on the voyage and helped collecting and cataloguing plants and animals found.



Features portrait medallion "Dr. Daniel Solander" by John Flaxman for J. Wedgwood & Sons, UK and *rhabdothamnus solandri* (named after Solander)

{2} Daniel Solander was born in **Piteå** in northern Sweden on 19 February 1733..



{3} .and in **Uppsala** he was a pupil of the Swedish botanist **Carl Linnaeus** (1707-78).



Postage stamp booklet with contents. 1939



Meter stamp, Piteå Municipality, 1983. D3.2. Francotyp A9000 (MV) (based on the widely spaced date figures). Solander and *rhabdothamnus solandri* (similar to the 1969 New Zealand issue left).

{4} The genus *Solandra* in the nightshade family is named after Daniel Solander..



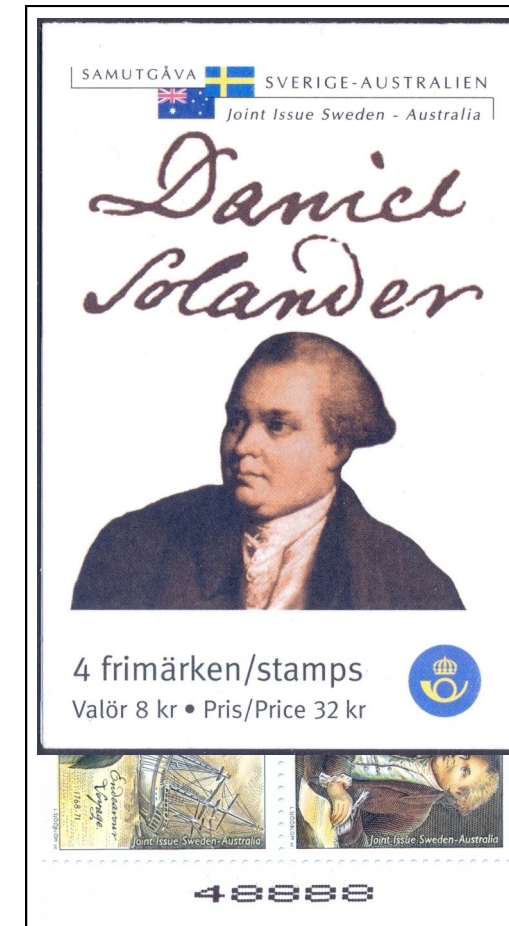
{5} .and so is the Providence Petrel (**Solander's petrel**).



Pterodroma solandri



Unadopted essay, original preliminary pencil drawing on tracing paper by James Berry. Depicts portrait of Daniel Solander and a watering party at Cook's Cove, New Zealand. 1969 New Zealand Cook Bicentenary issue. Issued stamp is displayed above, left.

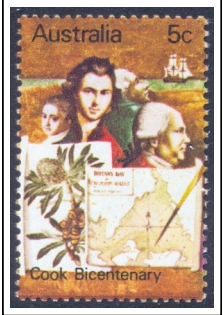


Postage stamp booklet with control number, copy of contents. 2001

The astronomer Green and the voyage artist Sydney Parkinson



Definitive proofs + one stamp as issued. Colour reproductions of artist's work for the 1986 Bicentenary of Cook's voyage to New Holland issue. Sent to Australian Stamp Advisory Board members for their approval. 6 copies produced. Proofs in 33c face value but 4 stamps were issued in other values as indicated. Drawings by Parkinson of **plants collected**, **Parkinson's self-portrait** and a portrait of Joseph Banks (by Joshua Reynolds).



{1} **Charles Green** (1734-71) (in green jacket!) was astronomer on the voyage and **Sydney Parkinson** (1745-71) was the voyage artist.

{2} Parkinsons primary role was to draw **natural history specimens**, and he produced accurate botanical paintings (left) but also made visual records of the Pacific Islands as they were in the 18th century when first visited by Europeans.



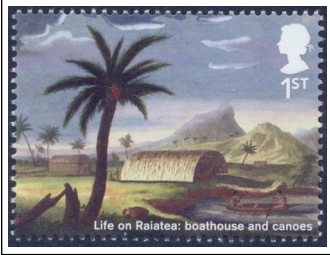
"*Volatinia jacarina*" and Sydney Parkinson



"A native of Otaheite, in the Dress of His Country"



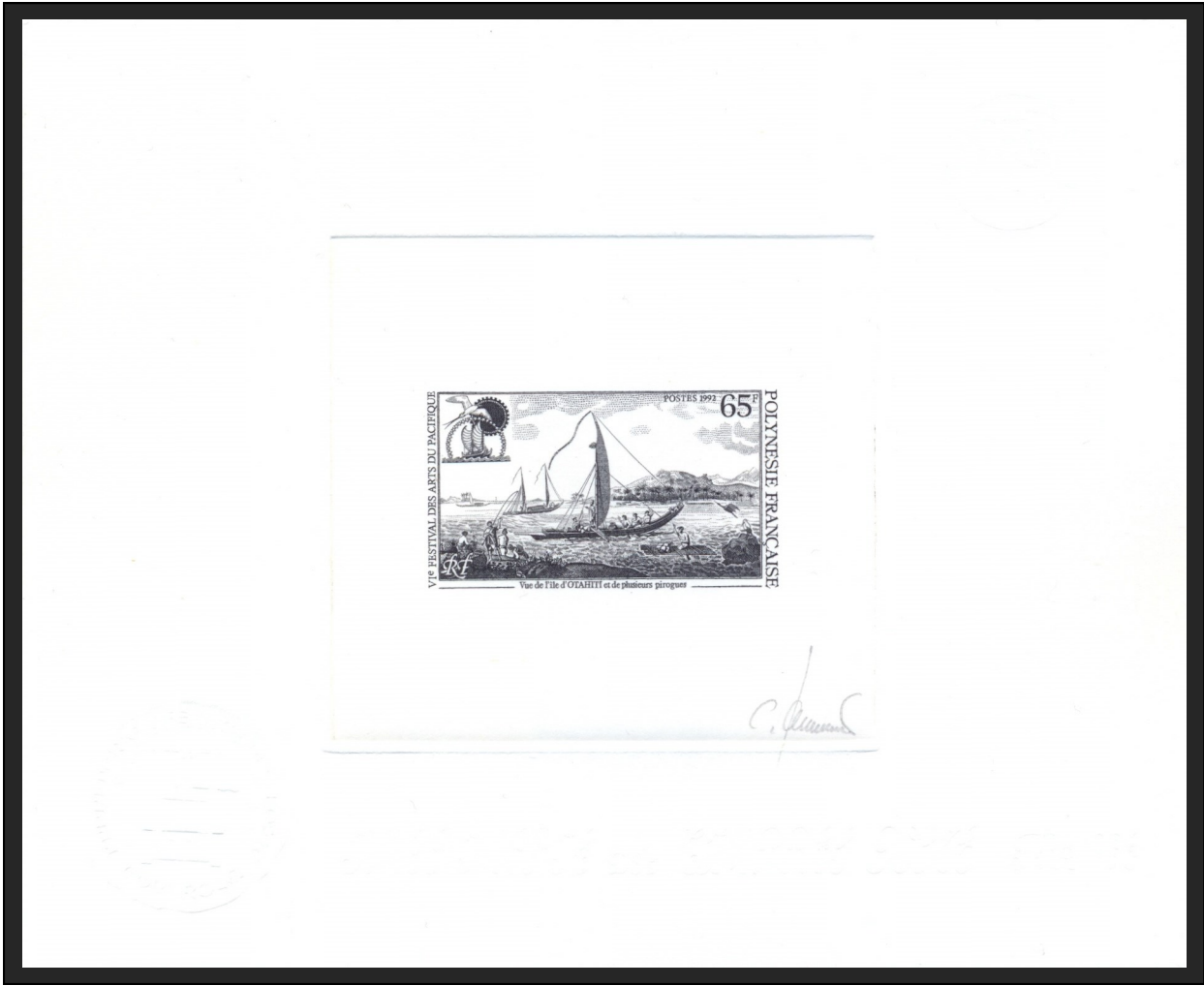
"A woman & a Boy, Natives of Otaheite"



"A Boat-House, in which the Natives of Raiatea preserve their Canoes of State from the Weather" engraving by Newton after Parkinson



"The Head of a Chief of New Zealand, the face curiously tattaowd, or mark'd according to their Manner" engraving by T. Chambers after Parkinson

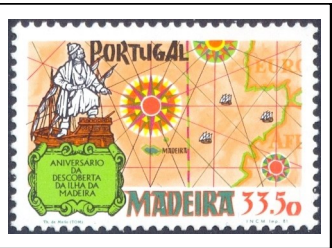


Engraver's die proof in black, signed by C. Jumelet. From a drawing entitled: "A view of Otaheite, with several vessels of that island".

The onward voyage



{1} On August 26th 1768 (ship's time) Cook departed Plymouth in southern England..



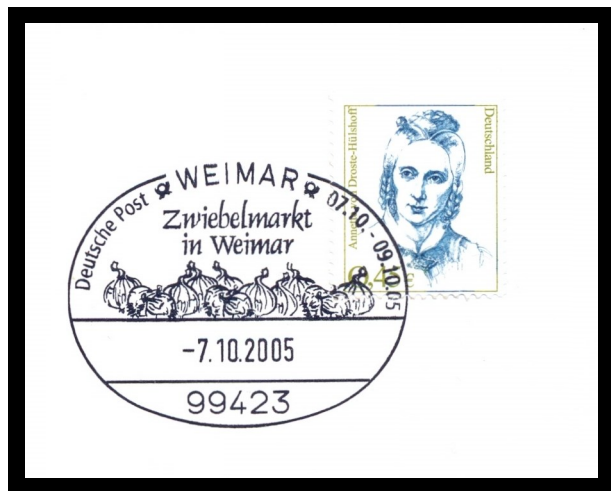
{2} .and his first port of call was the island of Madeira.

{3} The Archipelago of Madeira was discovered in 1418 by **João Zarco** (c1390-1471) and the main island of Madeira the following year.



Postal stationery; postal card. 1957

{4} Cook stopped for reprovisioning. Madeira was famous for its wine, and Cook took on board live **bullocks** and **wine**. He also obtained a large load of **onions** which was part of his diet regimen keeping his crew scurvy-free (more on p. 89-90) and healthy for the onward voyage..



{5} .towards Brazil in South America.



Postal stationery; postal card with reply card attached. Domestic use. 1889



DFDS ocean letter, folded message form type 4. Sent from S/S Polonia dated 16 November 1929 and received onboard S/S Aalborg. The printed message form was then forwarded by regular mail, tied by boxed Paquebot marking and Aalborg cds 19.11.1929. Postage 15 øre = domestic letter rate from 1 Jul 1927 to 30 June 1940. Reverse advertising showing DFDS routes around the world. Ex Otto Kjærgaard

Copy (50%) of advertising on back

{6} Cook anchored off Rio de Janeiro..



{7} .and after having rounded **Cape Horn** the tropical island of **Tahiti** was reached.



Preparing for Venus at Point Venus

{1} Having arrived at Tahiti Cook dropped anchor in the sheltered **Matavai Bay** on the north coast. It was a perfect spot from which to observe the Venus Transit..

{2} .and Cook named the northern point of the bay **Point Venus** and erected a small observatory fortification, **Fort Venus**.



Venus de Milo



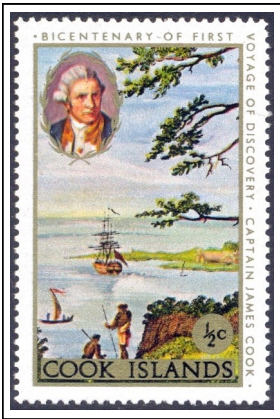
{4} Everything was now ready for the rendezvous with **Venus at Point Venus**.



{5} After the long voyage from England the sailors enjoyed the warm climate and what the island had to offer..



Final artwork, watercolour on cardboard with overlay (not displayed). Unsigned, probably unique. Adapted from Parkinson's painting (right): "Matavai Bay Tahiti from One Tree Hill, showing the ENDEAVOUR at anchor, and Fort Venus". Cook Islands 1968. Ex Fournier archive



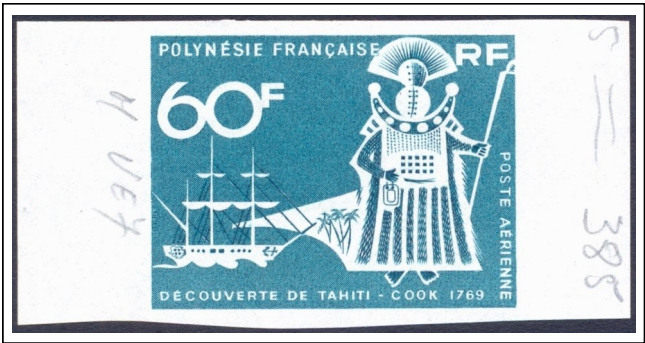
.as issued

{3} Within the Fort Venus Cook used a **portable observatory** with a **pendulum clock** to time the transit.



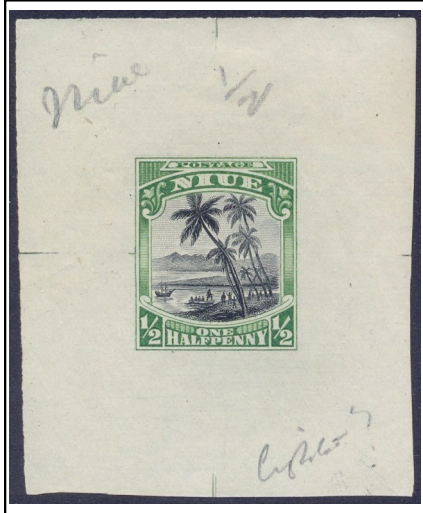
{6} .and awaiting the Venus Transit **ethnographic artefacts** such as **tattooing instruments** and a full **mourners dress** were collected.

Hatchet and **tattooing instruments**. Engraving from Hawkesworth's account of Cook's First Voyage (1773)

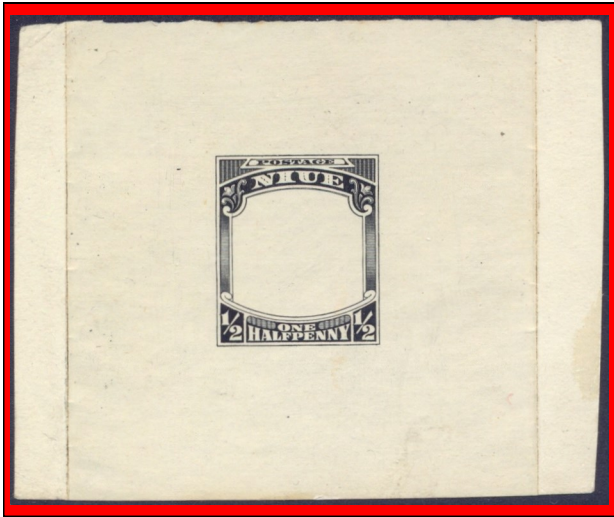


Trial colour plate proof with colour codes in pencil

Point Venus



Die proof on wove paper with visible guide register lines. Endorsed in pencil: "Niue", "1/2" and "lighter?"



Sunken frame die proof in black, on thick wove paper. Rare, only two recorded examples. Ex Lady Mairi Bury and Sir Gawaine Baillie



Centre vignette plate proof



{8} Stamp as issued

{1} Cook anchored off **Point Venus** in preparation for the Transit of Venus.

{2} In 1919 it was decided to issue a set of stamps for the New Zealand Island Dependencies with similar design for each of the islands of Rarotonga, Aitutaki, Niue and Penrhyn Island. The set was printed by Perkins, Bacon & Co in London and issued in 1920.

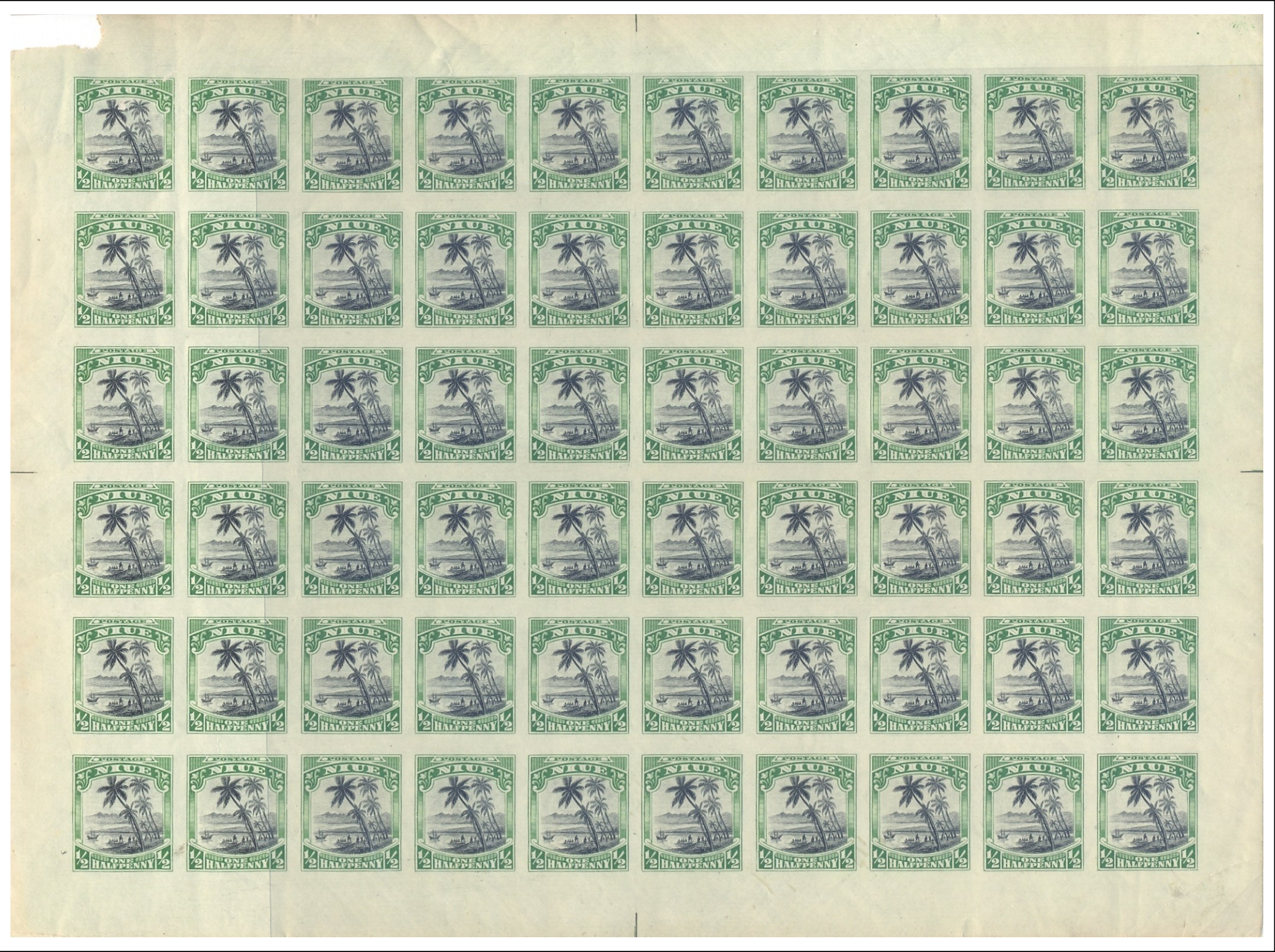
{4} The complete Niue die proofs were printed in issued colours..

{5} .and the frame die proofs in black only.

{6} The plate consisted of 60 impressions in 6 rows of 10 (right)..

{7} .and centre vignette plate proofs were run off in black only (left).

{3} The design for the 1/2d value was probably intended to depict Cook's landing on any of the islands named after him (pp.106-108) but he actually never landed on any of the islands. The design was adapted from a photograph of **Point Venus**, the artist added the men, boats and mountains in the background.



Complete design plate proof, full sheet of 60 impressions.