

# Postal History of Eritrea

## Italian and British periods 1883-1952

The postal history of Eritrea is closely following the political and military development of the territory a fact that this exposure wants to show.

### Italian period

1883 the first Italian post office opened in Assab and 1885 the next one in Massaua

1890 Eritrea become an Italian Colony and when the first overprint stamps for Eritrea were issued in 1.1.1893 there was post offices also in Asmara and Cheren. 1896 Italy failed to conquer Ethiopia and was defeated in the battle of Adua. Nine new post offices opened 1893-1907. **Maritime mail**, with both military and civil ships and very important for all external mail will be shown. A railway was built, starting 1897 from Massaua passing Asmara 1911, up to Agordat .During the 1930-ties 8 new the post offices opened. A list from Fil-Italia with all post offices and cancellations active 1936 also grading rarity 1-13 is used

In the “Abyssinian War” 1935-36 more than **40 military post offices** were used and another list from Fil-Italia with rarity grades 1-12 will be used for them.

**Italian East Africa.** After the Italian occupation of Ethiopia 1936, a common postal area was created , including the old colonies Eritrea and Somaliland and the conquered Ethiopia. Some common issues for Italian East Africa were issued, but the stamps of Eritrea were valid in the whole area. A few items sent from mainland Ethiopia with Eritrean stamps will be shown. A large area of former Ethiopia was included the postal area of Eritrea as to double its size and many post offices got cancellations with the name Eritrea. Most of the post offices in this area will be shown here. Starting 1929 the **airmail services** were expanding in this period. The **postage rates** in Eritrea were the same as in Italy up to 12.1.1939 with exception for the air mail rates. Many of these rates for different postal services are shown in the exhibit. Also a few telegrams are shown. Items sent within Eritrea are much more seldom than those sent to Italy and abroad. A few examples of **incoming mail** are shown, mainly to show postal routes.

**British period 1941-1952** .17.5.1941 the Italian troops surrendered to the British imperial troops and Britain governed Eritrea until 14.9.1952 when Eritrea became a part of Ethiopia after decision in UN. At first only Indian stamps and **Field Post cancellations** were used, but from 2.3.1942 stamps overprinted **M E F** (Middle East Forces) were used. In 27.5.1948 special overprints for Eritrea were issued, **BMA Eritrea**, British Military Administration. When a civil government come into power new overprints, **BA Eritrea** (British Administration) were printed.

**RARITY.**Very rare cancellations, destinations, and stamps rare on covers will be marked with red box.

## SYNOPSIS

Detta exponat har sedan det senast ställdes ut år 1997 kompletterats med många objekt. Detta gäller inte minst objekt från 1930-talet från det utökade Eritrea inom Italienska Östafrika

**Exponatet har två delar- den italienska och den brittiska perioden.**

Första delen av den **italienska perioden** vill **kronologiskt visa framväxten av postväsendet** i Eritrea som ett resultat av den politiska expansionen.

Ett mycket sällsynt objekt är brevet från Cassala till Massaua, ett postkontor som var i bruk i knappt 2 år för att sedan övergå till Sudan.

Över huvud taget är objekt som skickats inom Eritrea betydligt ovanligare än objekt skickade till Italien.

Ett brevkort med ovanlig destination är kortet till Zomba i Brittiska Central Afrika från 1898.

I exponatet finns också några Rek.brev till ovanligare adressländer nämligen till Guatemala 1921 och till Reunion 1922

Andra delen av italienska perioden visar de olika **posttjänsterna med deras portosatser**. Även här finns ovanliga försändelseslag såsom paketavier från 1906 och 1909 samt mottagningsvis från Asmara 1897

Försändelser med flygposttillägg visas separat. När det gäller tyngre flygpostbrev till utlandet har det varit svårt att få fram korrekt information om avgifter. Några exempel på sådana flygpostbrev bl.a. till Sydvästafrika visas.

**2 A.** Redovisningen av brittiska perioden inleds med några objekt med indiska fältpoststämplor, de första använda under fälttåget, se senare sedan Italien kapitulerat. Här visas också ett antal objekt från 2.3.1942 då den civila postgången återupptogs och MEF märkena togs i bruk. Kommande perioder med övertrycken BMA Eritrea och BA Eritrea visas också. Eftersom postväsendet redan var uppbyggt vid den brittiska ockupationen visas endast de olika posttjänsterna. Några telegram och en paketavi med mycket höga valörer visas, men de svåraste objekten från denna tid är utan tvekan de två Expressbrev till Italien med högvalörer

De flesta objekt från brittiska perioden är sända från Asmara och Massaua, men några objekt från mindre orter från Nefasit och Decamere finns också med

Som framgår av litteraturförteckningen har litteratur från Italien och England, samt använts för att få fram relevanta faktauppgifter

# Disposition

## PLAN, disposition and map

page 1-3

### A. ITALIAN RULE

#### I Development of the postal organisation

- |   |       |
|---|-------|
| 1. Post offices 1883-1907                         | 4-14  |
| 2. Maritime mail, railway and WWI                 | 15-18 |
| 3. New post offices in relation to the Abyssinian | 19-24 |
| 4. Military mail 1935-36                          | 25-32 |
| 5. Post offices in enlarged Eritrea. 1936-1941    | 33-38 |
| 6. Post offices in Ethiopia with Eritrean stamps  | 39-41 |

#### II Postal services

- |   |       |
|---|-------|
| 1. Internal mail and mail to Italy      | 42-46 |
| 2. Reg, insured and express mail        | 47-52 |
| 3. Postcards and printed matter         | 53-61 |
| 4. Parcel dispatches, postage due, etc  | 62-66 |
| 5. Airmail to Italy                     | 67-71 |
| 6. Foreign mail- letters                | 72-79 |
| 7. Foreign mail reg, etc                | 80-84 |
| 8. Foreign postcards and printed matter | 85-91 |
| 9. Airmail foreign destinations         | 92-97 |

### B. BRITISH RULE

- |                                 |         |
|---------------------------------|---------|
| 1. Military mail 1941-42        | 98-101  |
| 2. MEF 1942-1948                | 102-110 |
| 3. BMA and BA Eritrea 1948-1952 | 111-128 |

#### Reference literature:

Carobene-Guianetto: Eritrea-interi postali annullamento, Milano 1969

Bianci, P. Colonial Eritrea- vent anni di storia postale 1883-1903, Milano, 1976

Pilkington, C: The Postal Tariffs of the Italian Area, 1850-1985, Teddington, 1985

British Overprint Society: Br. Occupation of Former Italian Col. Cancellations, 1987

Fil-Italia, Official journal of the Italy Colonies Study circle, in England

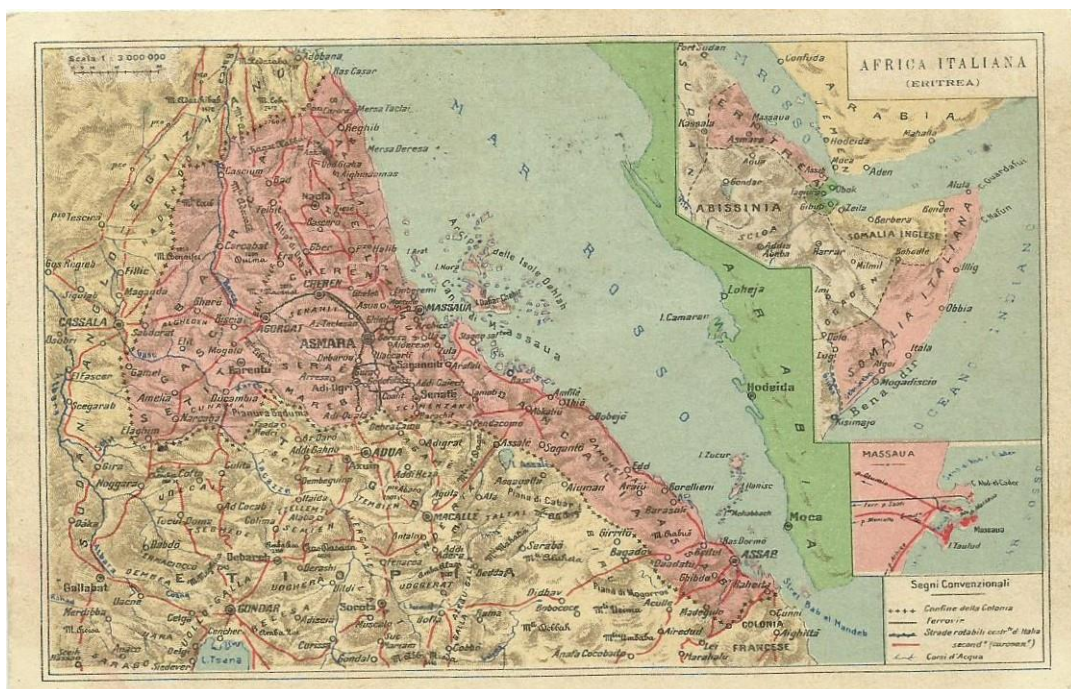
Spec Eritrean post offices and their cancellations

The Lion, Bulletin of the Ethiopian Stamps Collectors Club in England

Letter from. Mr A.R. Tregurtha 1992 about postal rates British period

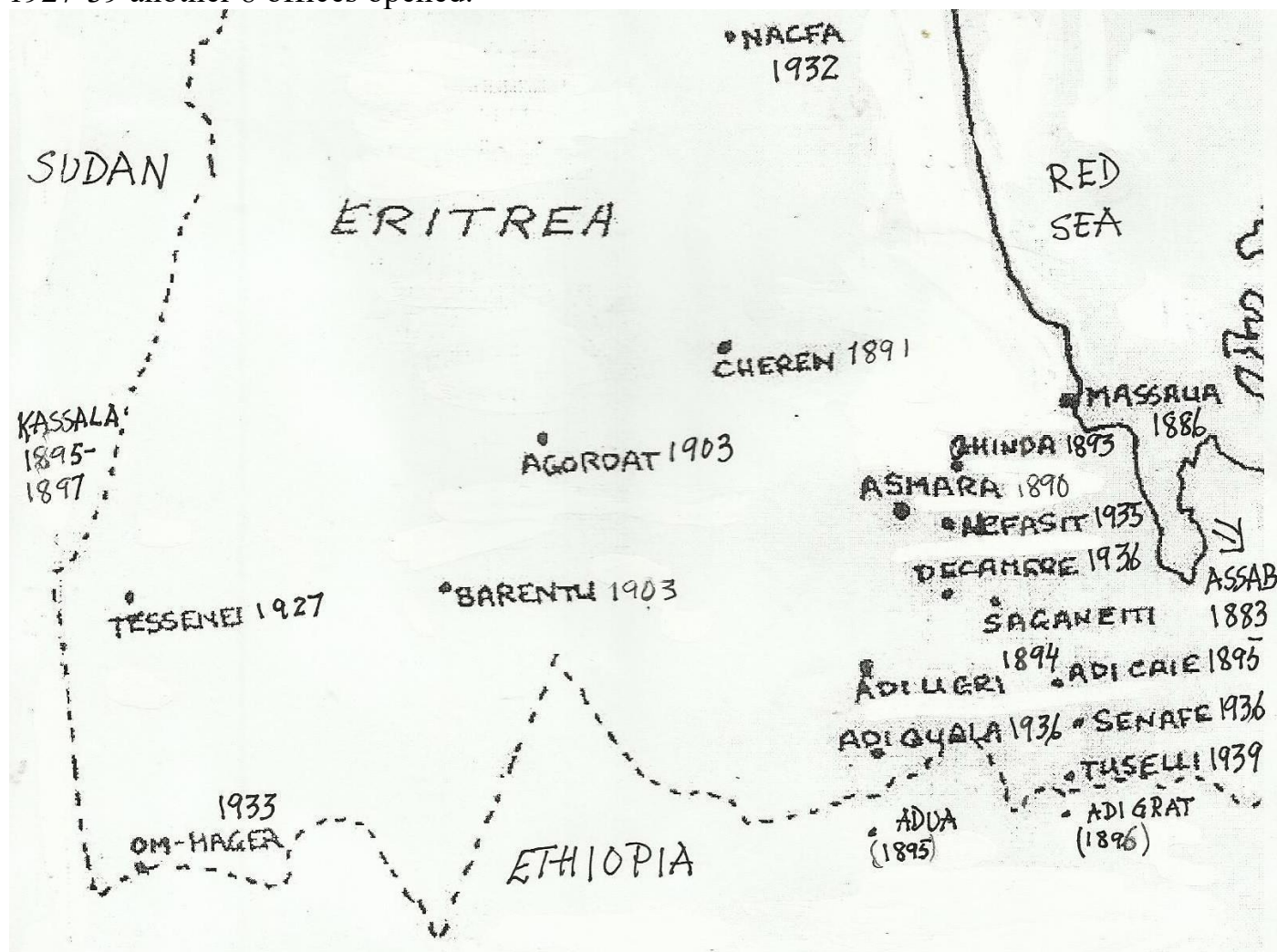
Eritrean Daily News, 2.3. 1942 "RESTORATION OF POSTAL SERVICE

# MAP OF ERITREA



Starting with Assab 1883 the Italian Colony opened 13 post offices up to 1903 according to the new areas colonized, including Adua and Adigrat in Ethiopia which were open just a few months and closed after the Ethiopian victory in the battle of Adua 1896

1927-39 another 8 offices opened.



# ASSAB

**Under Italian control since 1869 by Rubatino company as coaling harbour. The first post office in Eritrea opened here in 1883**



Postcard to Zomba, British Central Africa. Postage 10c (1883-31.1.1921)

Canc.: Assab 21.4.1898. Transit: Aden 15.5.1898, Chinde 16.6.1898

Arrival canc.: Zomba 30.6.1898 . No overprint Colonia Eritrea

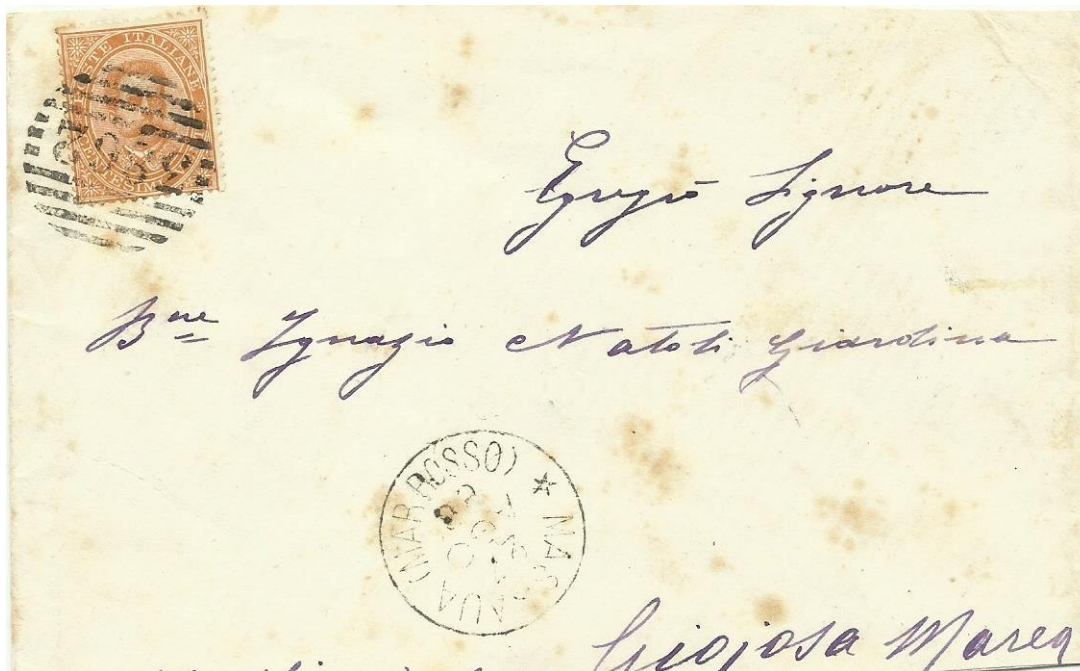


Postcard to Massaua. Postage. 10c. (1883-28.2.1919)

Canc.: Assab 15.3.1900. Transit: Aden-Massaua(ship) 15.3.1900

## MASSAUA

A port at Red Sea was conquered in 1885 and served as the capital for the colony Eritrea 1890-1898 A first class post office opened **Febr 22 1885** with number cancellation 3862



Letter to Italy. Franked with Italian stamp 20c without overprint (issued 1.1.1893)  
Canc.: Massaua Mar Rosso, 27.8.1886 (type1) and N.3862. Transit: Brindisi  
8.9.1886 . Arr.: Gioiosa Marcea 11.9.1886



Postcard to France. Postage: 10c. (1883-1921)  
Canc: Massaua 31.7.1897 (type 8) Arrival: Paris 14.8.1897

# MASSAUA

(Mod. 251) AMMINISTRAZIONE DELLE POSTE SERVIZIO DEI PACCHI

BULLETTINO DI SPEDIZIONE  
PER PACCO DIRETTO NELL'INTERNO DEL REGNO. DA DISTRIBUIRSI IN UFFIZIO

Si spedisce un scatola (pacco, rotolo, cestino, involto cassetta)

Contenente una pelle grera

Nome, cognome, condizione e domicilio del destinatario Rinaldo Castellani

Luogo di destinazione Roma Provincia id

Nome, cognome, condizione e domicilio del mittente Benare Sacche Benente 1° Pacciglion

Peso verificato del pacco Grammi 1500

Pacchi postali 908 All' Ufficio di Roma  
Massaua (Mar Rosso) Provincia di \_\_\_\_\_

(\*) Ufficio o collettoria di 1.a classe che deve distribuire il pacco.

Numero di arrivo \_\_\_\_\_ DIRITTI DI CUI È GRAVATO IL PACCO \_\_\_\_\_ Spedito il 1.o avviso il \_\_\_\_\_  
Diritti postali L. \_\_\_\_\_ C. \_\_\_\_\_ " " 2.o avviso il \_\_\_\_\_  
" di dazio consumo " " \_\_\_\_\_ Consegnato il pacco al destinatario il \_\_\_\_\_

Parcel card to Rome, Italian pre-stamped, 50c, without overprint.  
Canc. Massaua Mar Rosso (type 2) 26.3.1889. Arr.: Rome 18.4.1889



Postcard with only senders name, to Italy. Postage 2c. 1900-  
Canc. Massaua 18.1. 1903 (type 6)

1888-95 Italian forces continued westwards and as new villages and towns were occupied new post offices were opened

## ASMARA

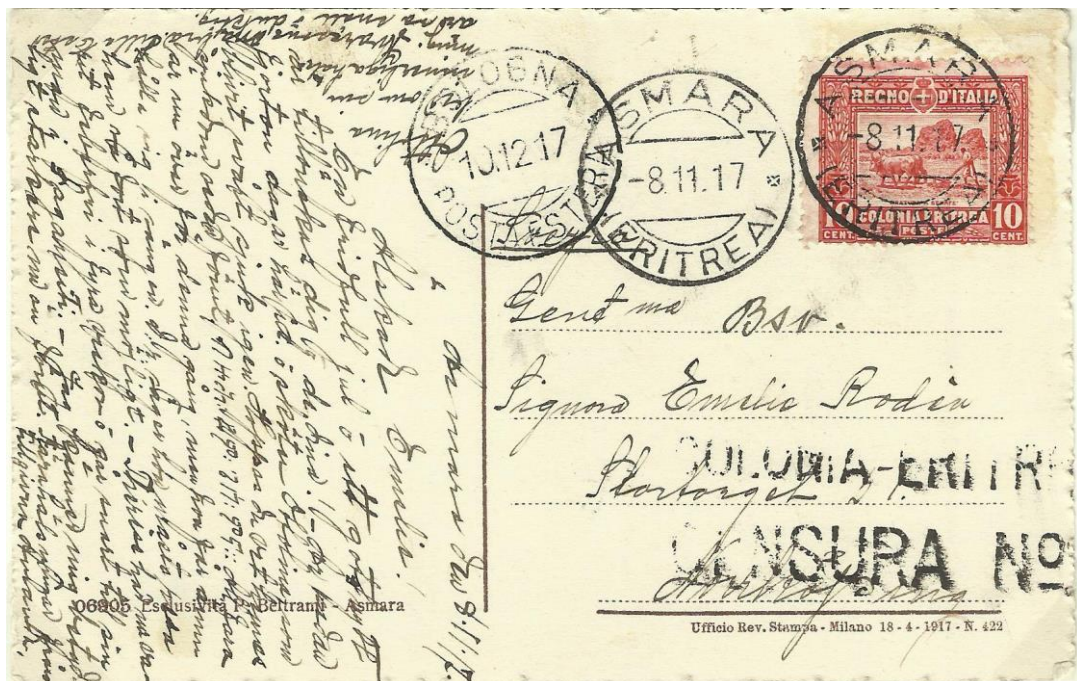
Asmara became Italian in 1889 and a post-office was opened 1890



Postcard to Germany

Postage 10c

Canc: Asmara 20.11.1906,(type 8)Arr.: Wilmersdorf, Berlin 1.12.1906



Postcard to Sweden

Postage 10c

Canc: Asmara Eritrea 8.11.1917(type 7) Transit: Bologna 10.12.1917

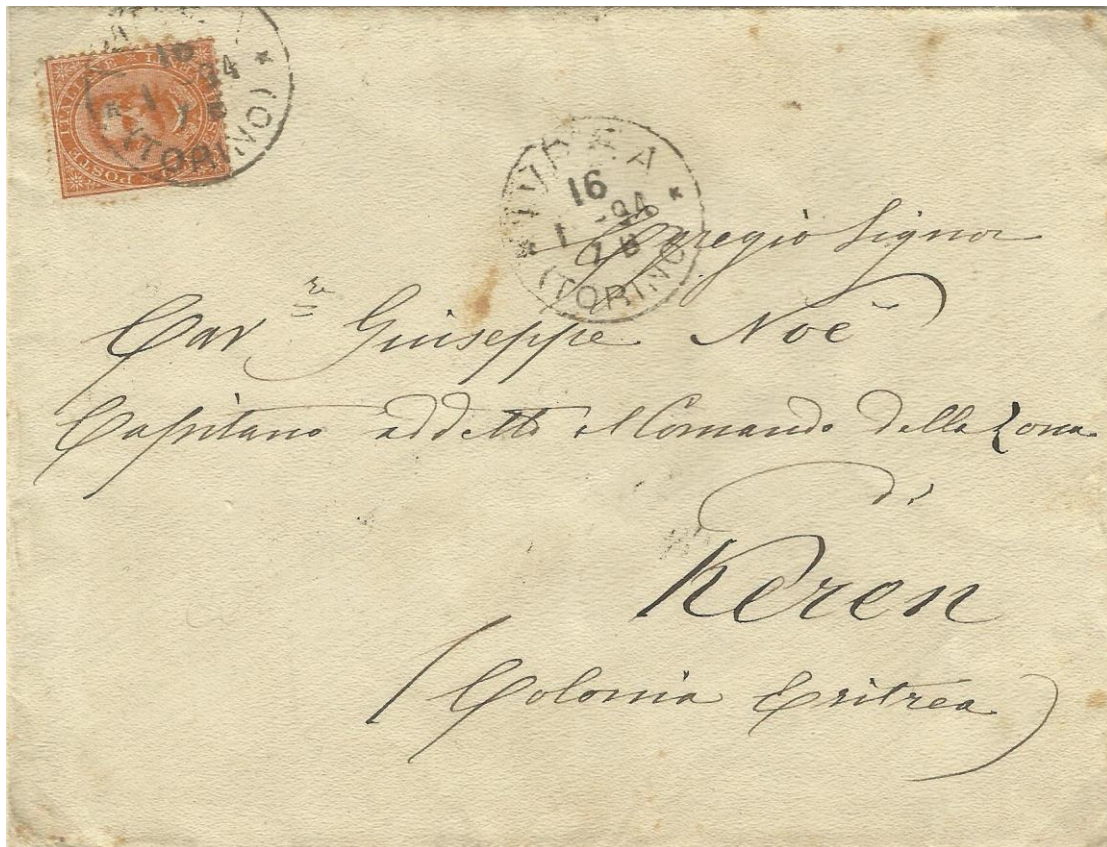
Censor: Censura Eritrea no 1

**CHEREN**

Italian since Febr. 5 1889. A post office opened Oct.20, 1890.



Reg.letter to Italy, 15-30g, 65 c. Italian stamps. Eritrean overprint 1.1. 1893  
Canc: Keren 22.12.1892 Transit: Massaua 25. 12.1892 Arr: Jan 1893



Incoming mail from, Italy to Keren. Postage 20c, Canc.: Torino 16.1.1894.  
Transit :Massaua Mar Rosso 29.1.1894, Arr: Keren 1.2.1894 (type 2)

## CHEREN incoming mail



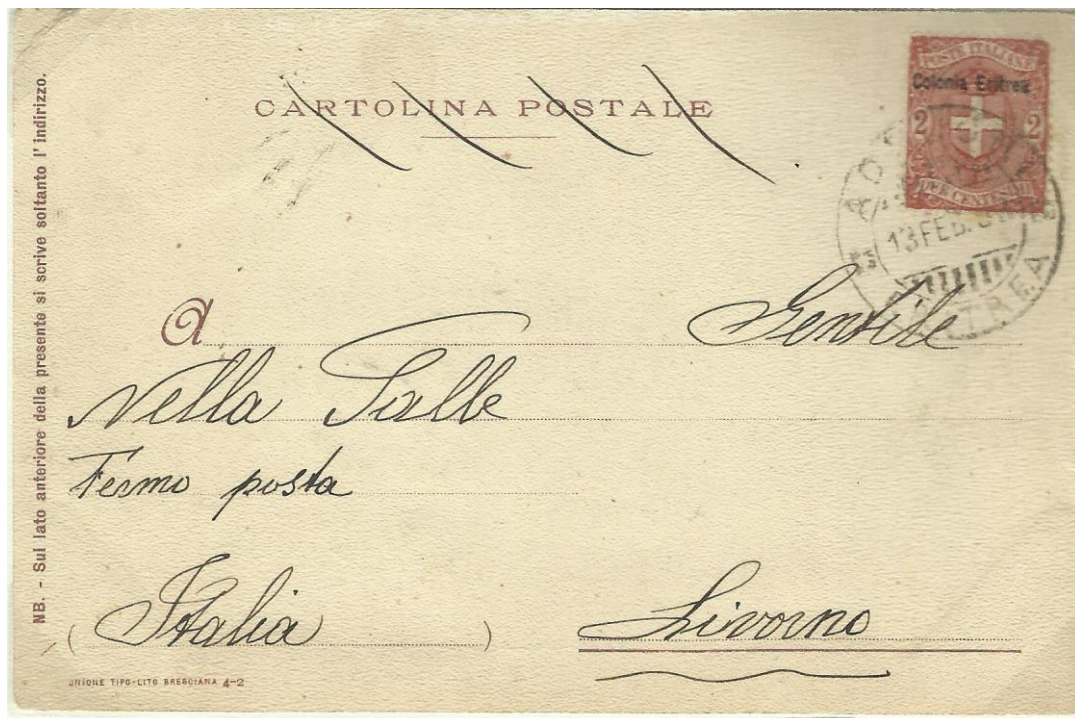
Postcard from Sweden, Postage 10 öre, franked with 2x5 öre Oscar.  
 Canc.: Norrköping 16.6.1910, Transit: Asmara 30.6.1910.  
 Arr: Cheren 30.6.1910



Postcard from Sweden, Postage 10 öre. Franked with 10 öre Med.  
 Canc.: Karlskrona, 9.3. 1917  
 Arrival: Cheren 7.5.1917 and 9.5.1917 (two months)  
 Italian censor in Bologna (44) And Colonia Eritrea Censura No 1 (24)

# ADI UGRI

Italian since Aug. 1892. A post-office opened July 1, 1894



Postcard with only sender sent to Italy, Postage; 2c

Canc.: Adi Ugri, Eritrea, 13.2.1902



Prestamped internal letter. Postage 5.c.

Canc: Adi Ugri, 15.4. 1907

## GHINDA

One of the first villages occupied by the in June 1889. Sub-post office under Massaua was opened in March 1, 1893



Postcard with only sender to Italy. Postage 2c

Canc.: Ghinda, Eritrea, 20.9.1902 (type 1), Transit: Massaua 22.9.1902

## SAGANEITI

Italian from Jan 18, 1895. A post-office was opened March 1, 1895

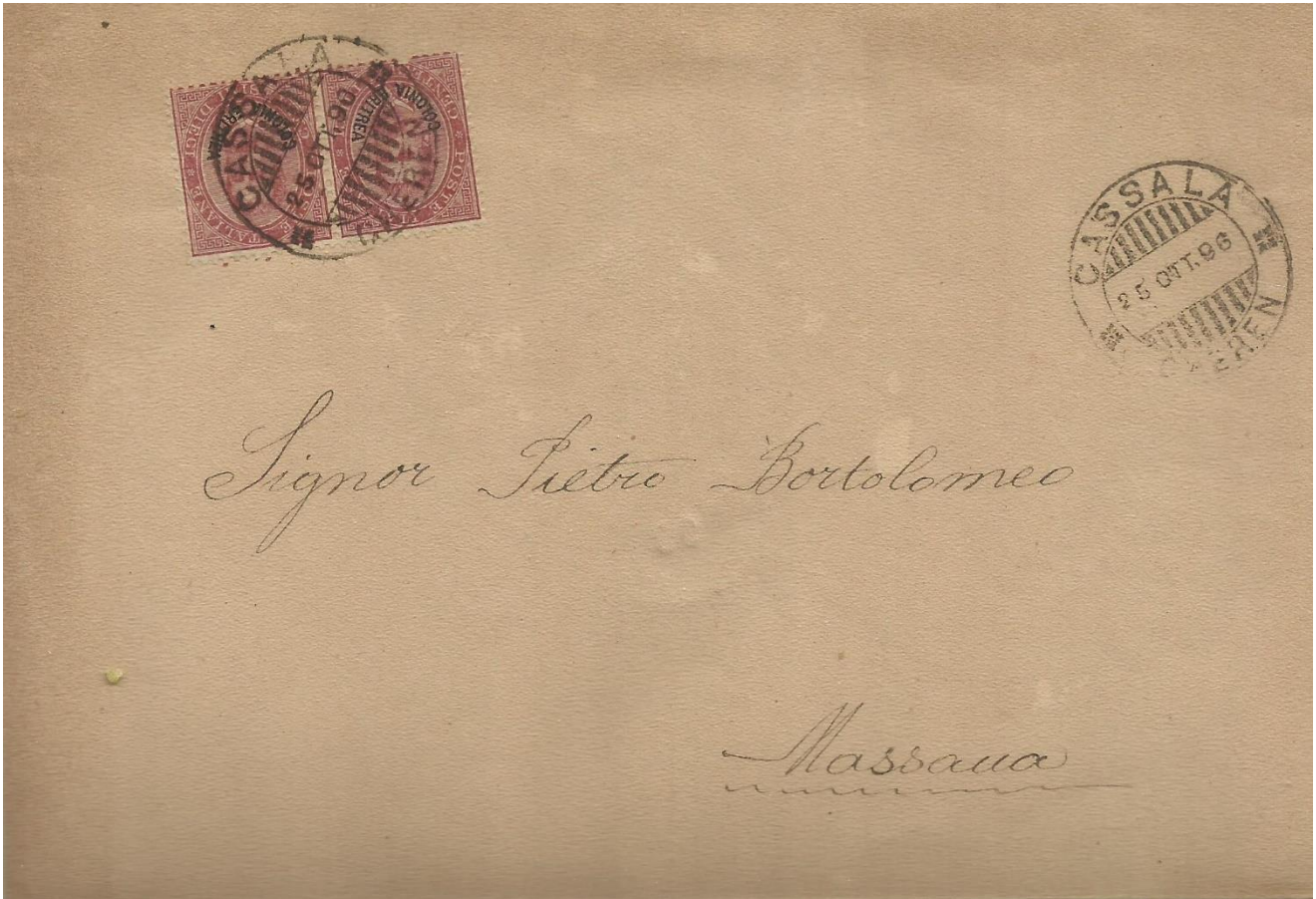


Postcard to Italy Postage: 10c

Canc: Saganeiti (Eritrea) (type 3), 2.11.1909 Transit: Asmara 2.11.1909

# CASSALA

Here the Italian expansion westwards reached its end A post office opened March 16, 1895 and closed in 1897 when the area was handed over to England, as a part of Sudan



Internal cover to Massaua. Postage: 20c

**Canc.: 25.10.1896. Arr: Massaua 10.1.1898!(sic 14½ months.**



Postcard sent from Kassala, Sudan 8.3.1914 Arr: Cheren 15.3.1914

## ADI-CAIE

Occupied in Jan 20, 1895. Very important in the war with Ethiopia 1894-96

A post office opened at July 1, 1896 but got its own cancellation stamp later



Internal letter sent to Massaua, Postage: 20c, 1883-31.8.1905

Canc: Adi-Caie 7.2. 1901. Arrival, rev: Massaua 10.2.1901



Airmail letter sent to Italy. Postage 1.50L 1.11.1935-11.1.1938 Canc.: Adi- Caie, 11.3.1936

## AGORDAT

Italian since June 2, 1890. A post office opened June 1, 1903

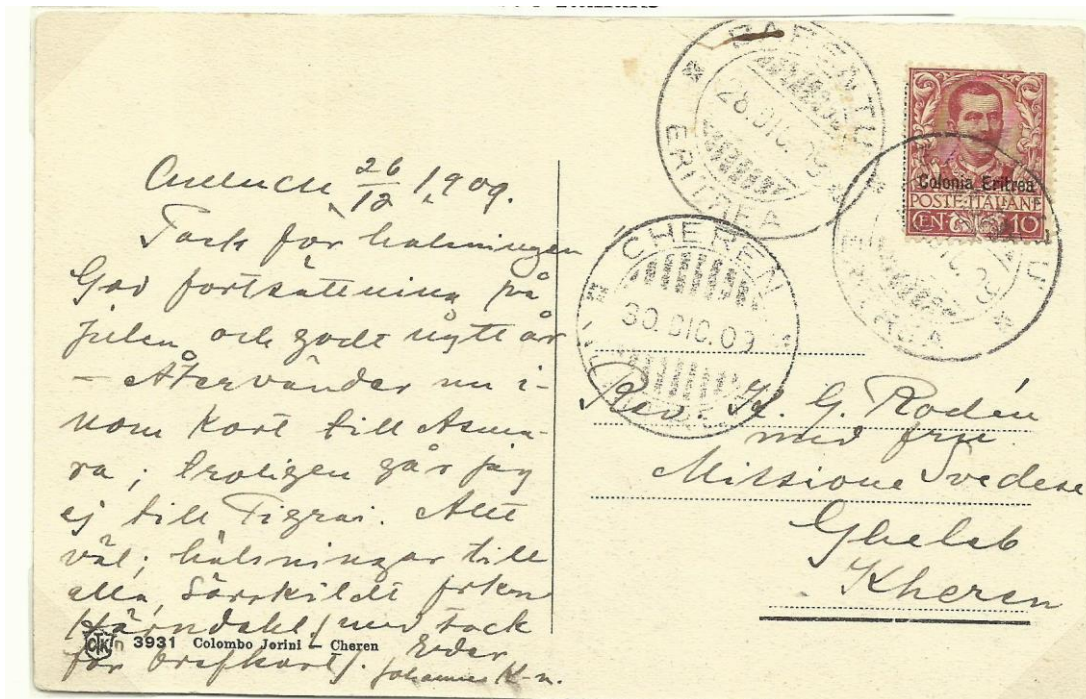


Postcard with no more than 5 words sent to Germany. Postage: 5c

Canc: Agordat Eritrea, 19.23. 1904

## BARENTU

A post office under Cheren opened March 1903



Internal postcard. Postage 10c. Canc.: Barentu, 28.12. 1909. Arr.Cheren 30.12.1909

# NAVAL CANCELLATIONS

**Ship routes.** Most international mail to Eritrea and from Eritrea was passing **Aden**, which was the fastest but not the shortest way to Europe

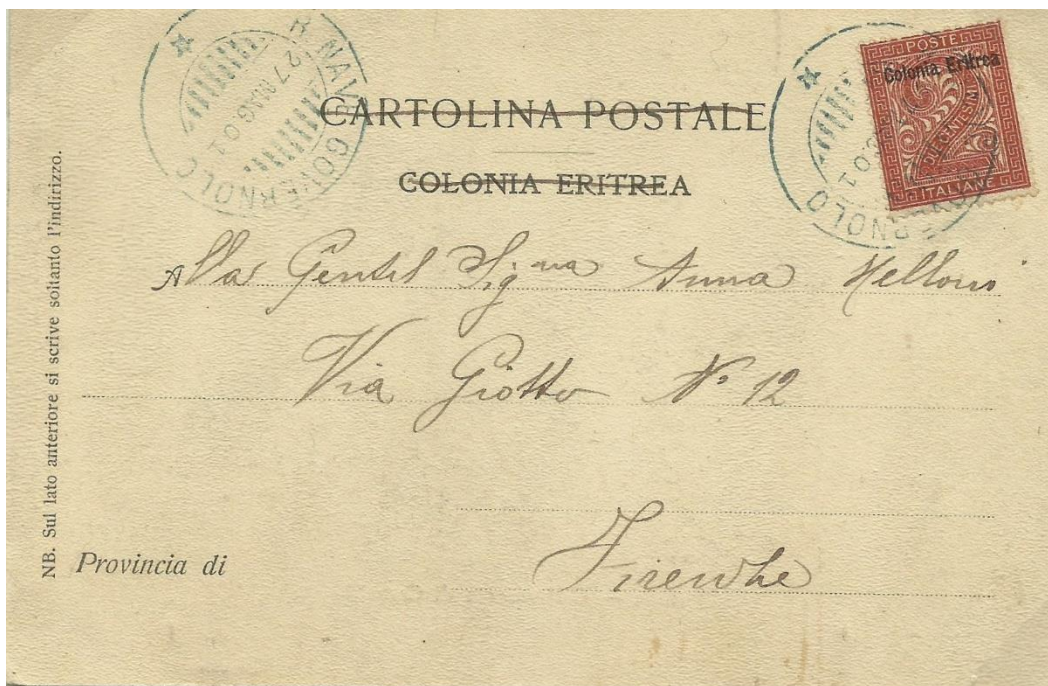


Postcard from England to Eritrea, sent via Aden and Massaua to Asmara  
Canc.: London 1.5.1902, Transit Aden 11.5.1902, Arr.: Asmara 17.5.1902

**At least 23 naval ships carried mail.**

**R.Nave Governolo**, Gunship 1280 ton,

In Red Sea Sept 1899-Dec 1900 and April 1901-Sept 1902, Against pirates and slave traders



Postcard only 5 words to Italy. Postage 2c. Canc. R.Nave Governolo 27.5.1902

# NAVAL CANCELLATIONS

## Archimedes. Piroscapo postale



Postcard to England, Postage: 10c

Cancel: Archimedes, Piroscapo postale, 25.3. 1896

## Amerigo Vespucci, Steamship of the Rubbatino Company



Postcard, only sender to Italy. Postage: 2c Sender in Massaua. Cancel: Amerigo Vespucci, Monday 22.9.1902. Transit Aden. Wedn 24.9.1902

Dep. Monday from Massaua. Arr Wednesday in Aden for further transport by P&O Company to Europe as with this card

## RAILWAYS IN ERITREA

The Italians started to build a railway from Massawa at the Red Sea up to Asmara already 1887. It was a difficult project since Asmara's altitude is 2340 m. The railway was very important also for making mail transports much faster and reliable. Existing roads were just suitable for mules. 1923 the railway reached Keren and 1929 Agordat.

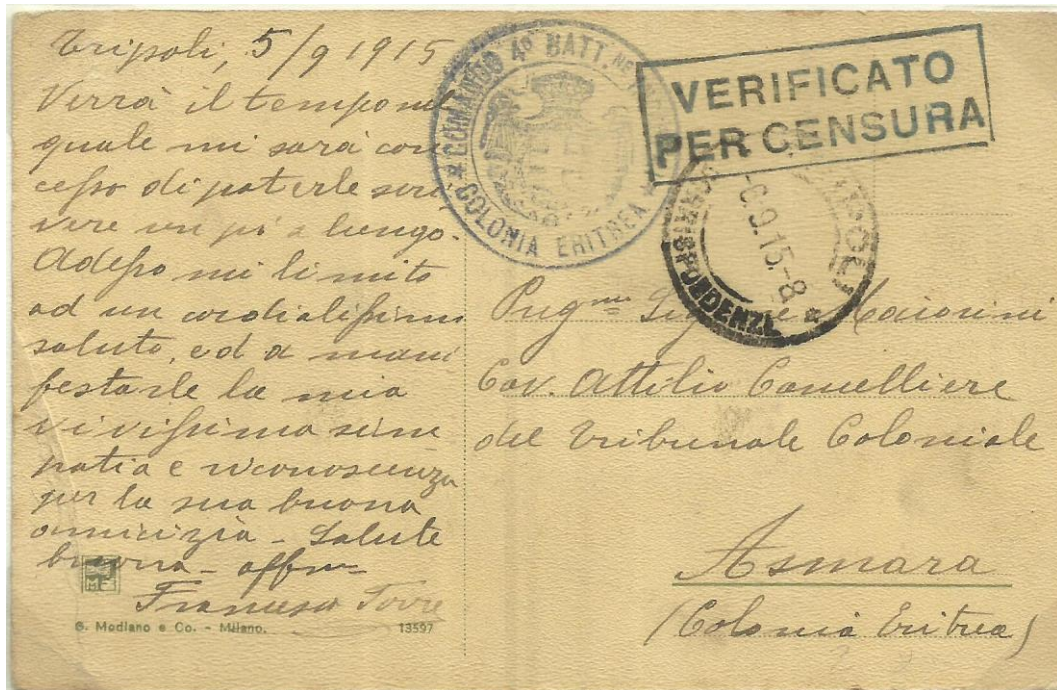
**Massawa** is the main port of Eritrea and here the railway line began



**Asmara** , the railway station.

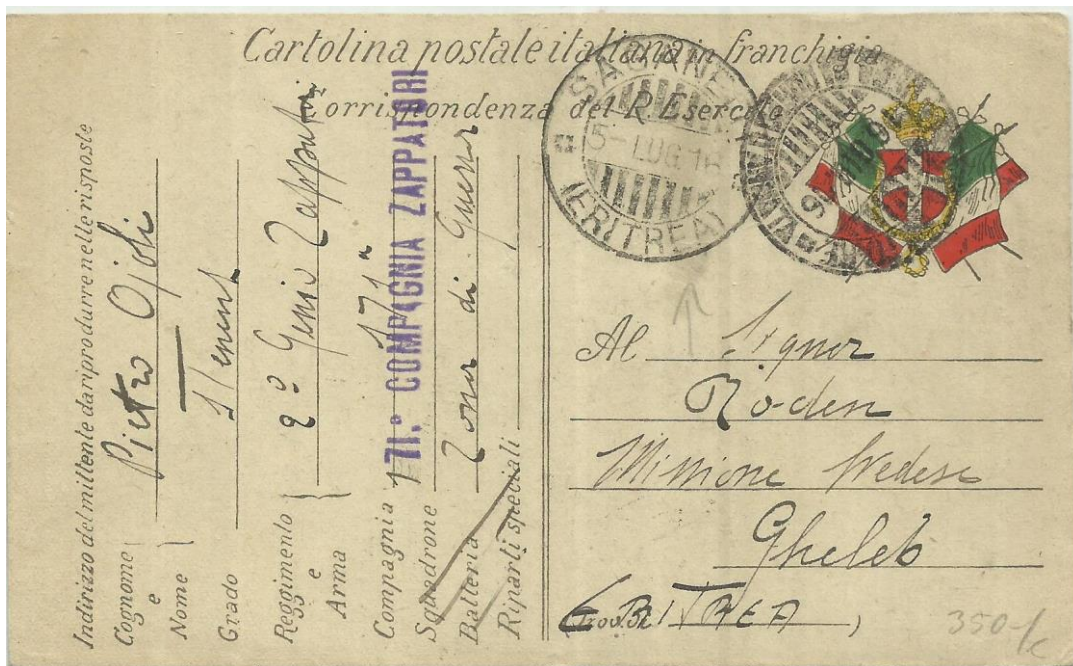


# MILITARY MAIL WW1 (incoming mail)



Military postcard from Tripoli (Libya) to Eritrea.

Canc.: Tripoli 6-9-1915



Military postcard from Posta Militare 16.6.1916

Transit: Saganeiti 5.7.1916 to Gheleb (Cheren)

**Cancellations -rarity.** P.Macrelli & B.Chevato-Selvaggi have published a list in Qui Filatelia with all cancellations in use in the 1930ies .Valuation points from 1 to 13. 1-5, common, 6-10 found only with difficulty, 11 cannot normally be found, 12 rare 13 very rare These points are used in the exhibit.

**NACFA** Residency and trade centre for indigenous peoples in this remote northern area **A post-office opened Nov 1, 1932**



Local letter to Addi Doiro Postage: 50c Canc: Nacfa: 17.11.1940

Cannot normally be found (11) NB Address written in local language



**TESSENEI — near the border of Sudan. A post office opened Nov.15, 1927**



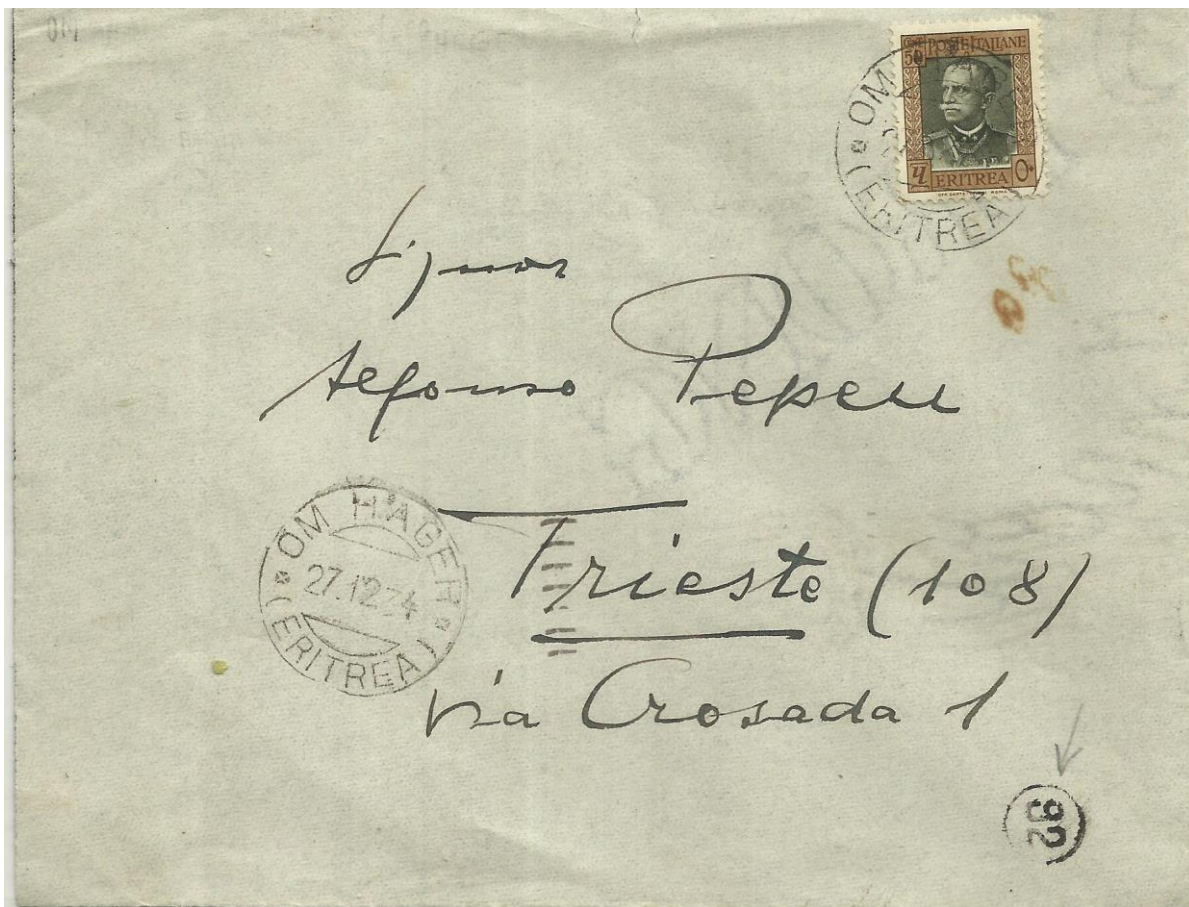
Internat reg.letter, Postage 1.75 L. 15.6.1927-11.1.1939 Canc: Tesseney 7.10. 1933 (8)



Telegramme to Italy from the Prince of Savoia, Canc. Tesseney 15.3.1940

## OM HAGER

On the border of Ethiopia. A post-office opened in 1933.



Letter to Italy, Postage 50:c. Canc: Om Hager 27.12. 1934 (9)

## NEFASIT- A post-office opened before March 1935



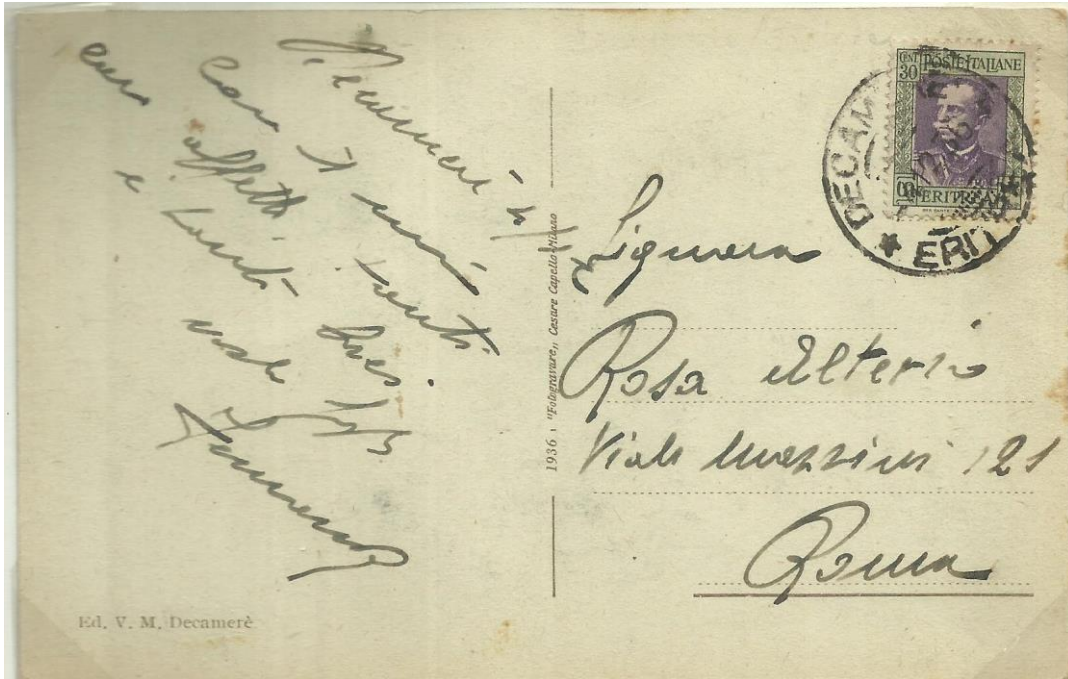
Air-mail to Italy, Postage 1.50 L (1.11.1935-11.11.1939) Canc: Nefasit 19.2.1937.(10)

Arrival : Padova 26.2.1937

# Post offices opened during the war with Ethiopia 1935-36

## DECAMERE

The town was built during to war with Ethiopia 1935-36. A post office opened in Febr.1936



Postcard max 5 words to Italy. Postage 30c. Canc: Decamere 4.12.1936



Airmail letter sent to Italy. Postage 1.50L. Canc: Decamere 11.8.1935

## ADI QUALA

A post office opened in Febr .1936



Airmail cover to Italy. Postage: 1.50 L.

Canc: Adi Quala, 2.1. 1936 (Probably wrong- must be 1937) (10)

Arrival: Roma 7.1.1937

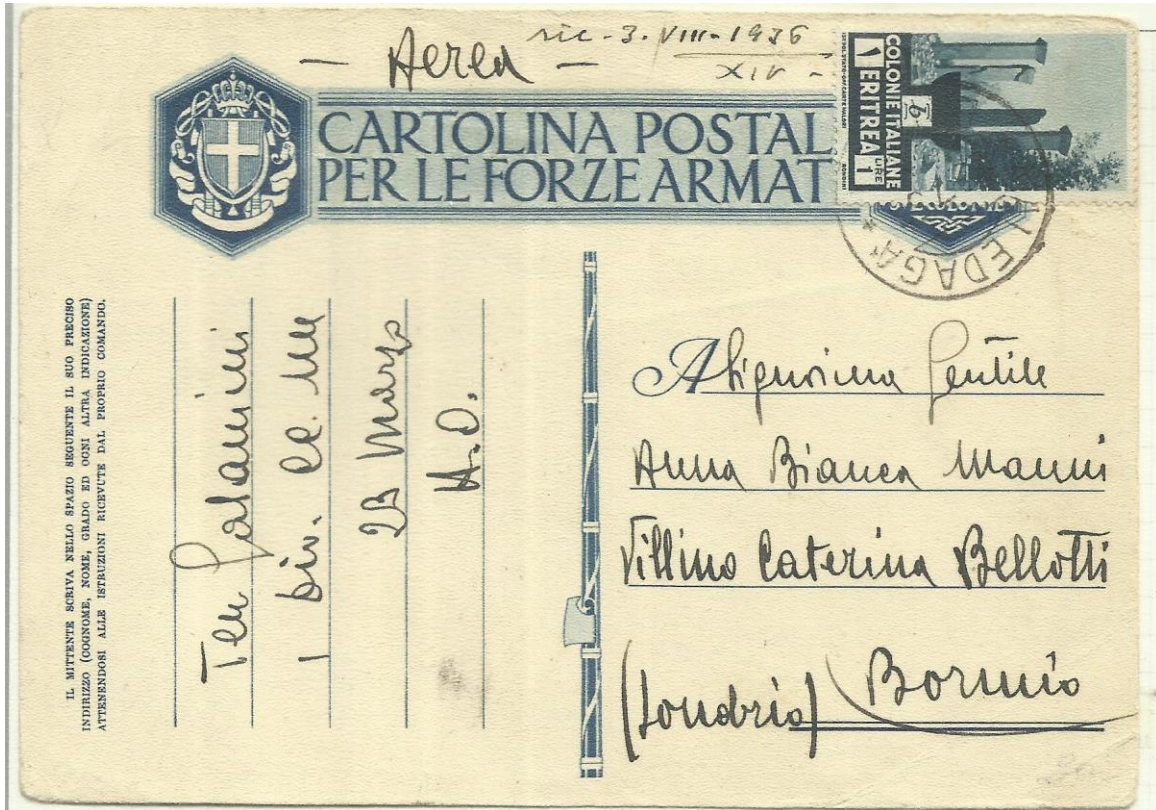
**SENAFE . Near Ethiopian border. A post office opened Febr.23 1936**



Postage: 20c: Canc.: Senafe 14.8. 1936 (8)

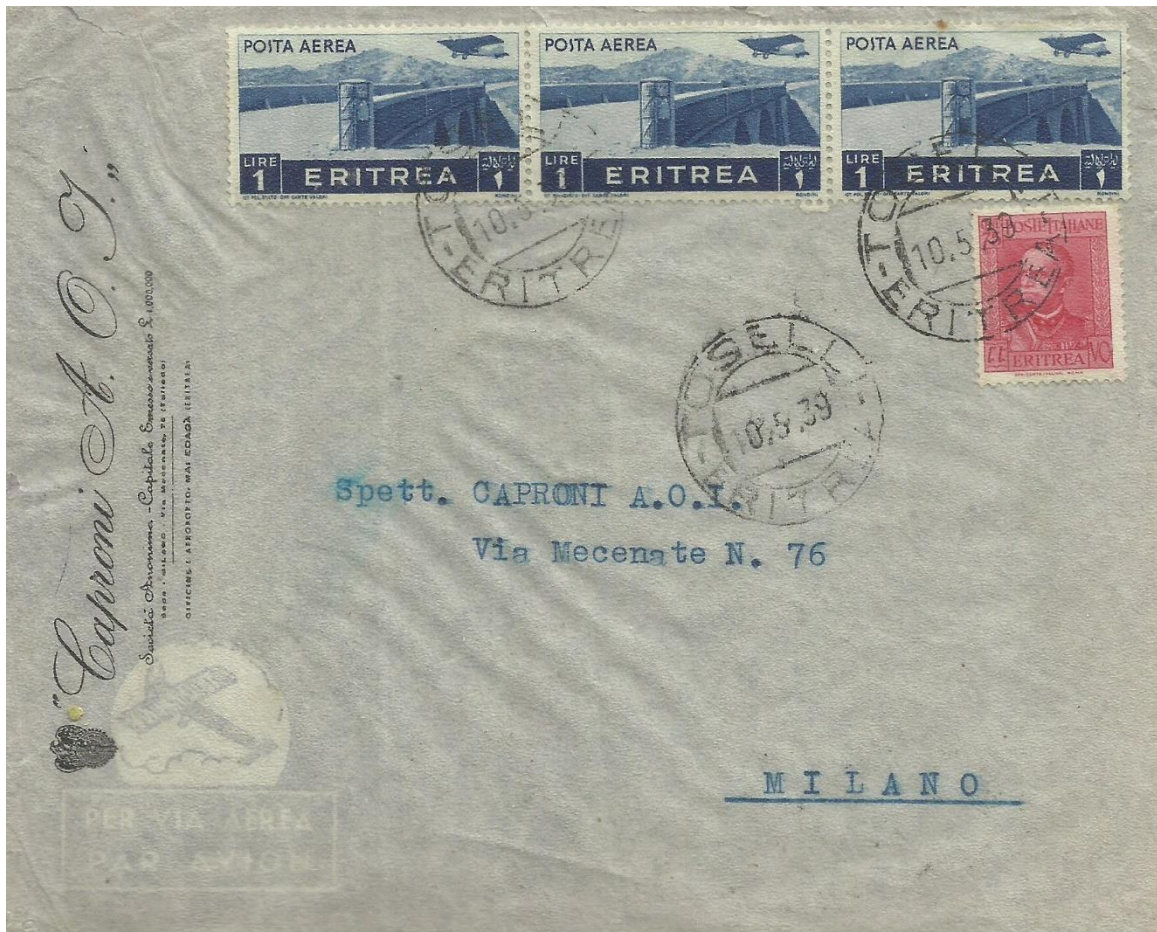
# MAI EDAGA

A post-office opened in April 25, 1936. Febr 1 1939 it changed name to Toselli



Military postcard with additional postage for airmail.(1 L Canc.: Mai Edaga 29.7.1937 (9))

# TOSELLI



Airmail letter to Italy, Postage:75c+, airm.3x 1L Total: 3.75. Canc: Toselli 10.5.1939 (10)

Arr: Milano 17.6.1939

## MILITARY MAIL, ABYSSYNIAN WAR 1935-36

The Italian dictator Mussolini wanted to create an empire in east Africa. He decided to conquer the old Empire Abyssinia. Regardless of protests in League of Nations the invasion started Oct 3 1935 and May 5 1936 the mission was completed.

More than 40 Military post offices (Posta Militare) opened during to war which were handling large amounts of correspondence from soldiers Two different Military Postcards were used as shown. Sometimes soldiers could send letter for half normal rate

“Il Corriere filatelico” have published a list with rarity maks from 1-12 used here

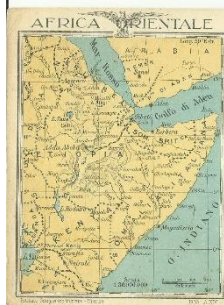


Many thousands solders were shipped to Eritrea for the war.

# MILITARY POSTCARDS

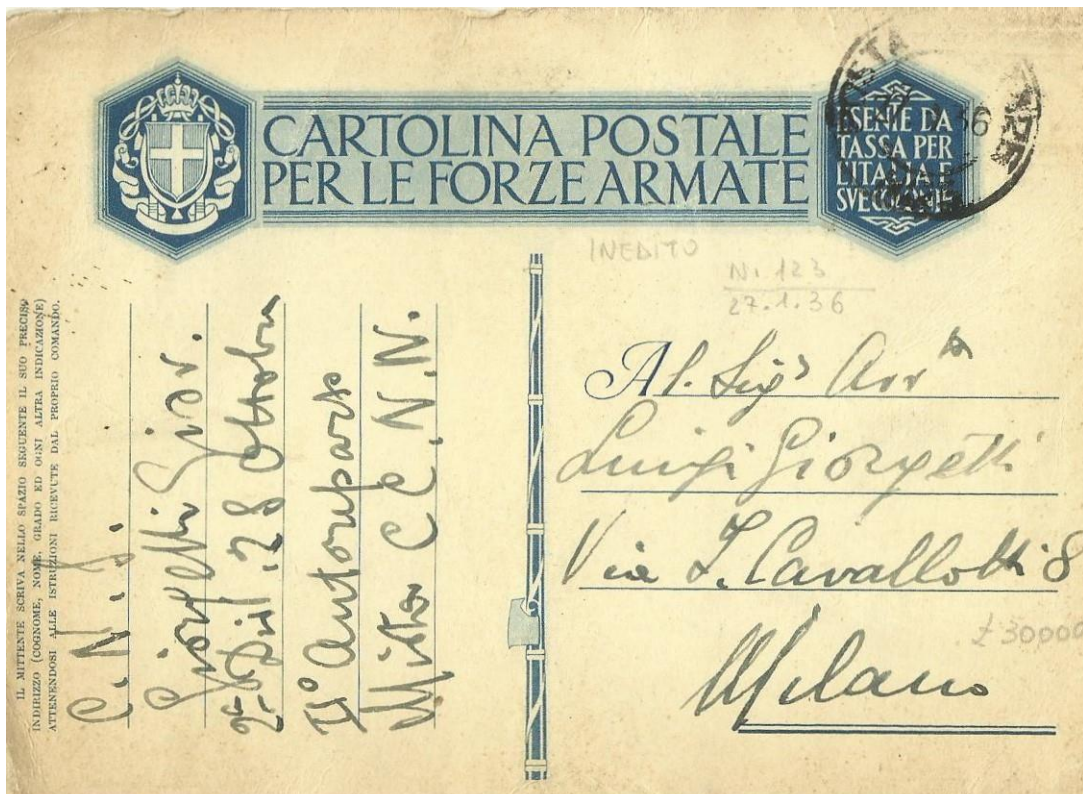


Postcard to Italy. Posta Militare 125 E, 11.8.1935 (2) (sender in Coibo, Amara)



Map from reverse (reduced)

Postcard to Italy. Posta Militare N 123. 27.1.1936 (4)



**MILITARY MAIL – reduced rates**



Letter to Italy with reduced postage, 25 c Canc: PM 101, 4.4.1936



Letter to Italy with reduced postage, 40c (ord. 75c) 15-30g

Canc.: PM N. 1E, 1.6.1936 (7)

## MILITARY MAIL



Postcard only signature to Italy Canc.:Concentr. SUSS, Asmara, 25.9.1936(1)  
Maartiere Postale (Postal Area) 103-5 in circle



Letter to military in **Somalia**. Canc Posta Militare 2 "E", 22.11.1935 (8)

**MILITARY MAIL – Air mail**

**L 1.25 (50c+75c air mail fee) 11.4.1929-31.10.1935**



Air mail to Italy. Canc: Posta Militare 1 "E", 19.9.1935 (5)

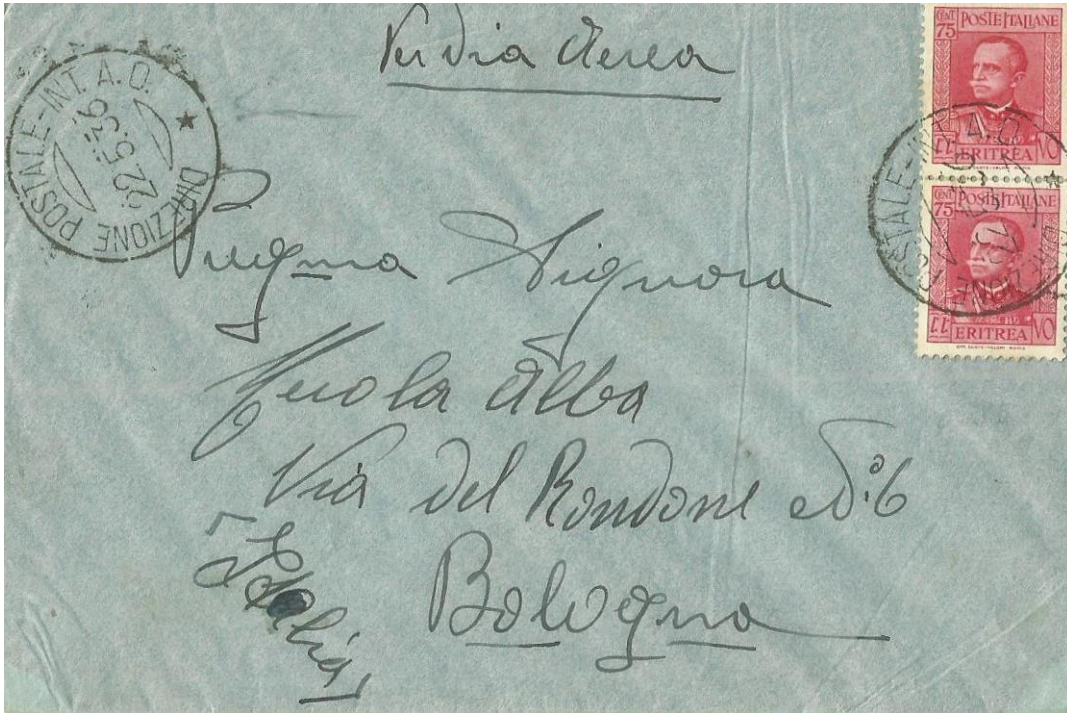
**L 1.50 (50C+ L 1air mail fee) 1.11.1935-11.1.1939**



Air mail to Italy. Canc.: Posta Militare No 15, 3.2.1936 (5)

## MILITARY MAIL – Air mail

L 1.50 (50C+ L 1air mail fee) 1.11.1935-11.1.1939



Air mail to Italy. Canc: Direzione Postale-Int.A.O. 22.5.1936

Arrival: Bologna 31.5.1936



Air mail to Italy with mixed franking- Etiopia and Eritrea.

Cnc: Posta Militare N 120M Emissione B. 16.6.1937 (10)

**MILITARY MAIL – Reg.mail**

**L 3.75 (50c+ Reg.fee L1,25+ Air.fee L 2)**



Reg airmail to Italy .Canc; Posta Militare No25 31.12.1935. (2)  
Transit: Brindisi 8.1.1936 Arrival. Arezzo 9.1.1936

**L 5 ( 75 c (15-30g)+Reg.fee.L 1.25+ Airfee L 3)**



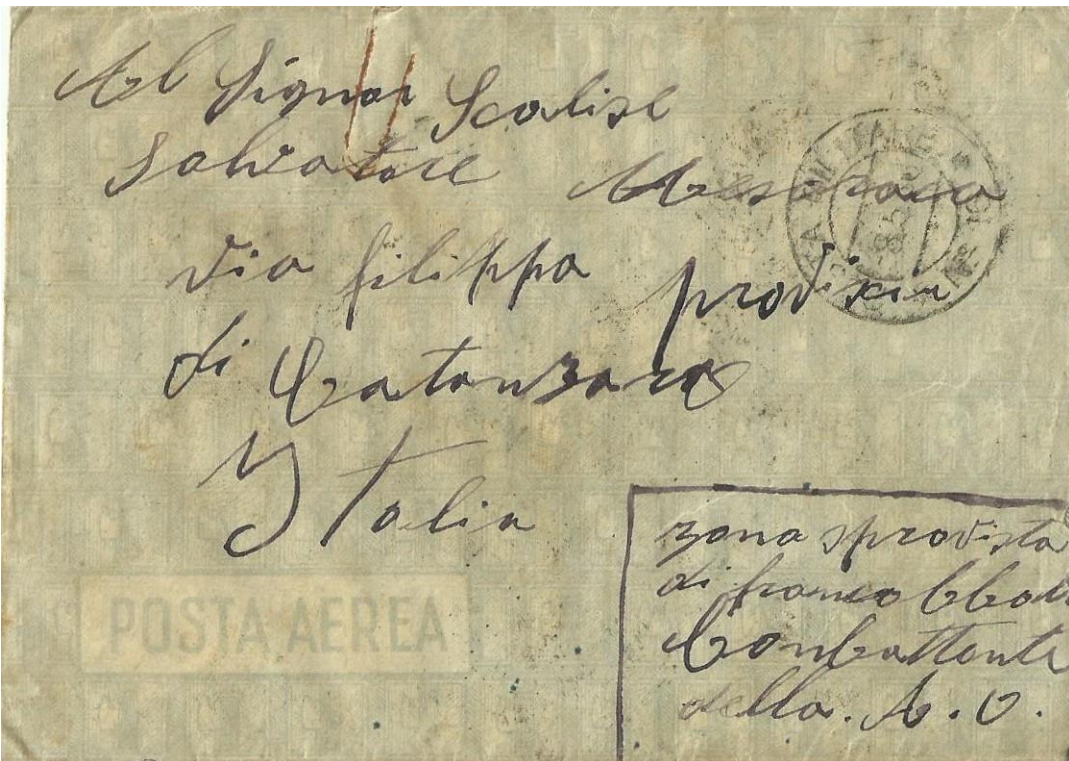
Reg.airmail to Italy Canc.:Posta Militare 130E 16.6.1937 (1) Arr.: Roma 25.6.1937

**UNFRANKED COVERS BECAUSE OF LACK OF STAMPS IN BATTLE AREAS . POSTAGE DUE IN ITALY**



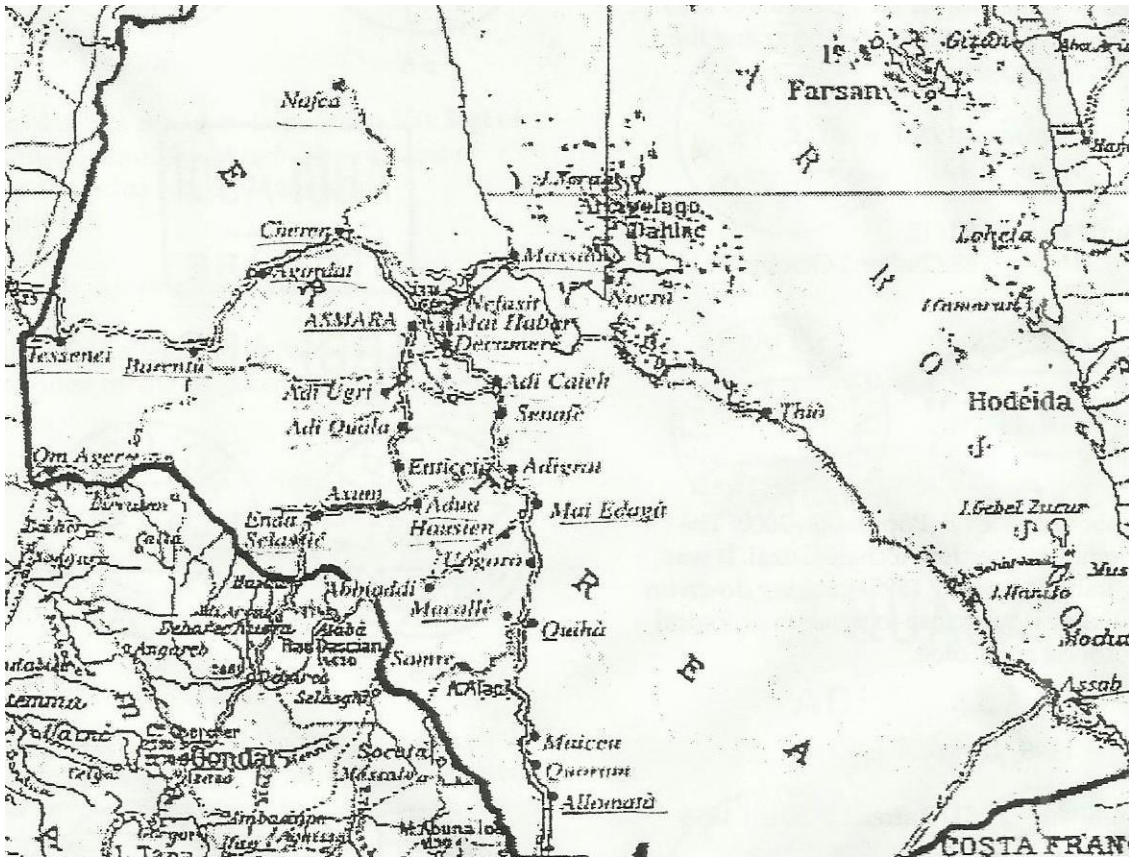
Unfranked  
Air mail  
cover,  
military  
personal  
from Nefasit  
to Italy

Canc.:  
Nefasit  
24.3.1936.  
Postage due  
50c Roma  
5.4.1936



Unfranked air mail cover. PM no 16 8.5.1936 Postage due, 50 c, back Mesuraca 27.5.1936

## Larger province Eritrea as part of Italian East Africa from 1936



**AXUM** Capital of the ancient Axumite kingdom. Post office June 22 1936



Airmail to Italy Postage L 2.50. Canc. Axum 3.11.1936(/6). Arr.: Messina 8.11.1936

# ADUA

165 km south of Asmara. Under Italian rule Dec 30 1894-Dec 9, 1895 A post-office was open May 1, 1895-Dec 2 .1895 Adua was reoccupied by the Italians Oct.5-6 1935 and a postoffice opened at **April 29, 1936** Returned to Ethiopia 1942.



Airmail letter to Italy, Postage 1.50 L. (1.11.1935-11.1.1939) Canc: Adua (Etiopia) 5,12.1936(5)



Airmail letter to Italy, Postage 2.10 L Military mail.

Canc.: Adua (Eritrea) 2.4.1938 (5) Arr.: Roma 5.4.1938

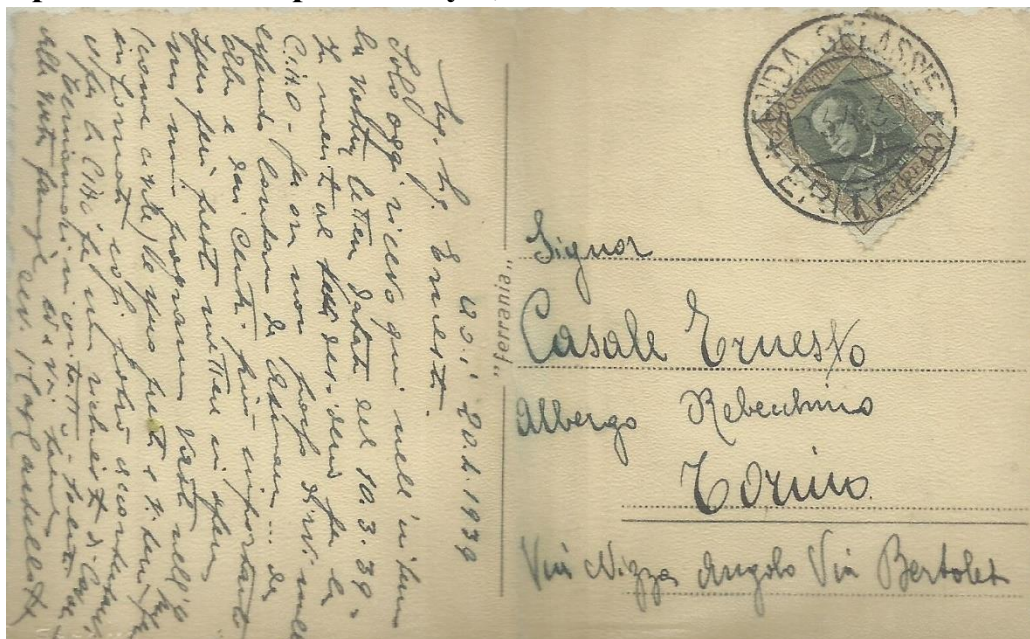
**ADIGRAT** An Italian post office was open May 1- 1895- Jan 15 1896.  
 Was reoccupied Oct 6 1935 during the war with Ethiopia. A post office opened  
**May 4, 1936.** Returned to Ethiopia 1942.



Airmail cover to Italy. Postage 4.50L Canc: Adigrat (Eritrea) 2.2.1937

**ENDA SELASSIE**

A post office was opened July 1, 1937



Postcard sent to Italy. Postage 50 c Canc.: Enda Selassie, Eritrea  
 23.4.1939 -found only with difficulty (10)

## MACALLE

Italian 1895-1896, Reoccupied Nov. 8 193 A post office opened July 1, 1936



Airmail letter to Italy, Postage L.1.75, 12.1.1939-17.5.1941 Letter: 75 c

Canc.: Macalle, Eritrea, 5.9. 1939 (5) Arr.: Palermo 13.9.1939

**ENTICCIO. 1935-36 P.M 101 was used. From July 1, 1936 post-office**

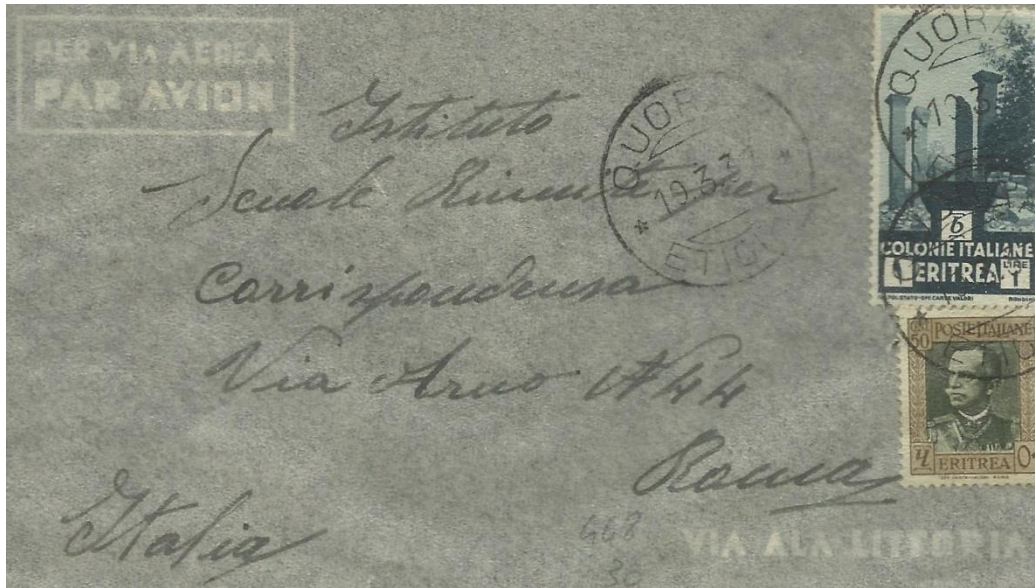


Airmail letter to Italy. Postage L 1.50 (1.11.1935-11.1.1939)

Canc: Enticchio Eritrea, 8.1.1937 (9) Arr.: Sondrio 14.1.1937

## QUORAM

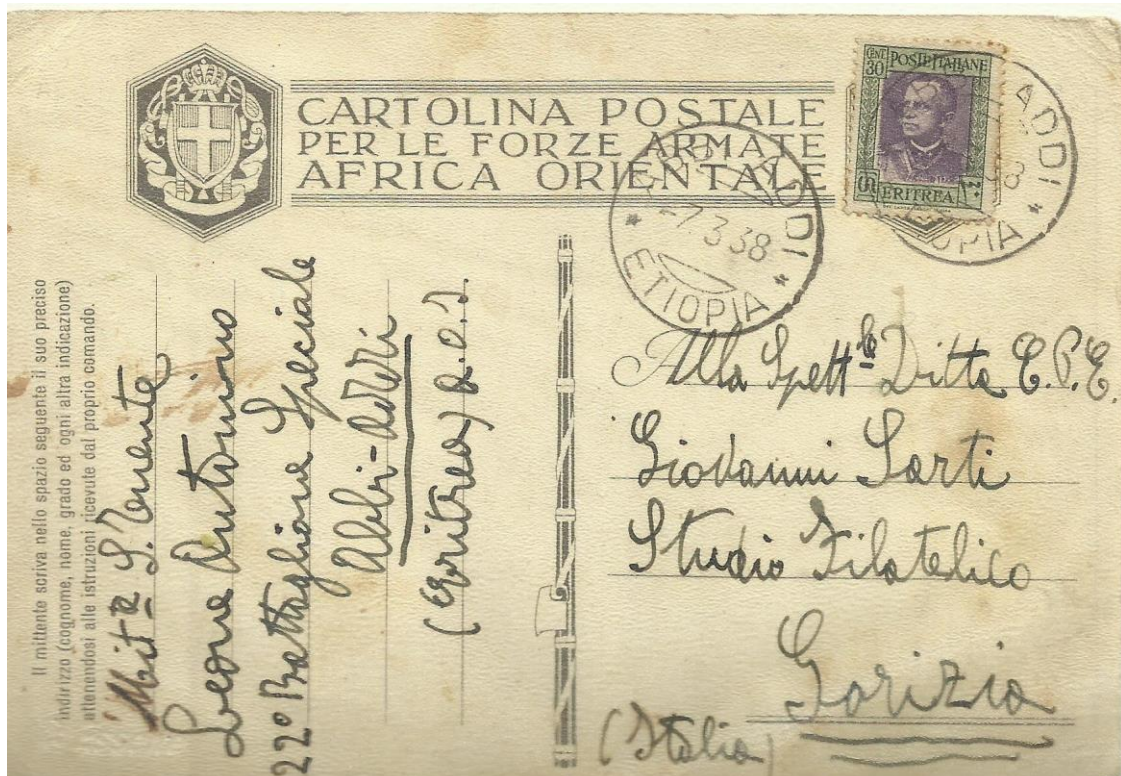
A post-office opened before 1936. Before that a military post office



Airmail letter to Italy. Postage K 1.50 (1.11.1935-11.1. 1939) Letter: 50c  
Canc.: **Quoram Etiopia**, 19.3. 1937 (10) Arr.: Roma 15.3.1937

## ABBI ADDI

A post office was open Aug 1 1936- July 1 1940



Postcard sent to Italy, Postage: 30c. Canc. **Abbi Addi, Etiopia**, 7.3. 1938 (6)

## HAUSIEN

Post office opened Sept 4 1938. A short time PM 125E was used.



Airmail cover sent to Italy.

Postage L 1.50

Canc.: Hausien, Eritrea, 22.11.1936. –found with difficulty ,( 9 )

Arr: Firenze 30.11.1936

## ALOMATA

A post office was opened July 1, 1937



Airmail postcard to Italy Postage 1.50L. Canc: Alomata-Eritrea 16.9.1939 – rare (12)

# STAMPS FROM ERITREA ON ETHIOPIAN COVERS

**ADDI-ARCAI -Amara** Post office from 5.10.1936



Air cover to Italy. Postage. L 1.50 Canc: Addi-Arcai 1.5.1937

Found only with difficulty (8).Arr.:Giurdignano 10.5.1937

**BAHARDAR- Amara.** Where the Blue Nile meets Lake Tana. Post office from 1.6.1937



Aircover to Italy. Postage: L 1.50 Postage Due: L 1 Canc: BaharDar, 1.7.1938-Found only with difficulty (10) Arr: Siena 8.7.1938

# STAMPS FROM ERITREA ON ETHIOPIAN COVERS

**GONDAR – Amara. Opened 2.7.1936**



Postcard with only signature to Switzerland. Postage: 25c

Canc. Gondar Correspondenze e Pacchi 13.2.1938 (6)

**SENDAFA- Amara Opened 25.6.1937**



Aircover to Italy. Postage L 1.50. Canc.:Sendafa 2.5.38-rare (12) Arr Venezia 17.5.38

# STAMPS FROM ERITREA ON ETHIOPIAN COVERS

## ADDIS ABEBA



Airmail postcard sent to Sweden. Postage 75 + L 2 Airmail.

Canc.: Addis Abeba 19.12.1938



Air cover to South West Africa- Postage L 10.25 ( L2.25 + Air mail L 8)

Canc: Addis Abeba 11.6.1938. Transit Khartoum 14.6.1938

# LETTERS WITHIN ERITREA AND TO ITALY

40c (15-30g) : 1885-31.8. 1905



Internal cover to Massaua. Canc.: Asmara 24.11.1901

15c( - 15g) : 1.9.1905 -31.12.1915



Letter to Italy. Canc. Massaua 15.12.1907. Arr.: Ferrara 26.12.1907

# LETTERS WITHIN ERITREA AND TO ITALY

20c (-15 g) 1.1.1916-28.2.1919



Letter to Italy .Canc Asmara.: 24.5. 1917

40c: 1.2.1921-31.12.1923



Letter to Italy. Canc.: Asmara, 6.7.1921 Arr.rev.: Napoli 22.7.1921

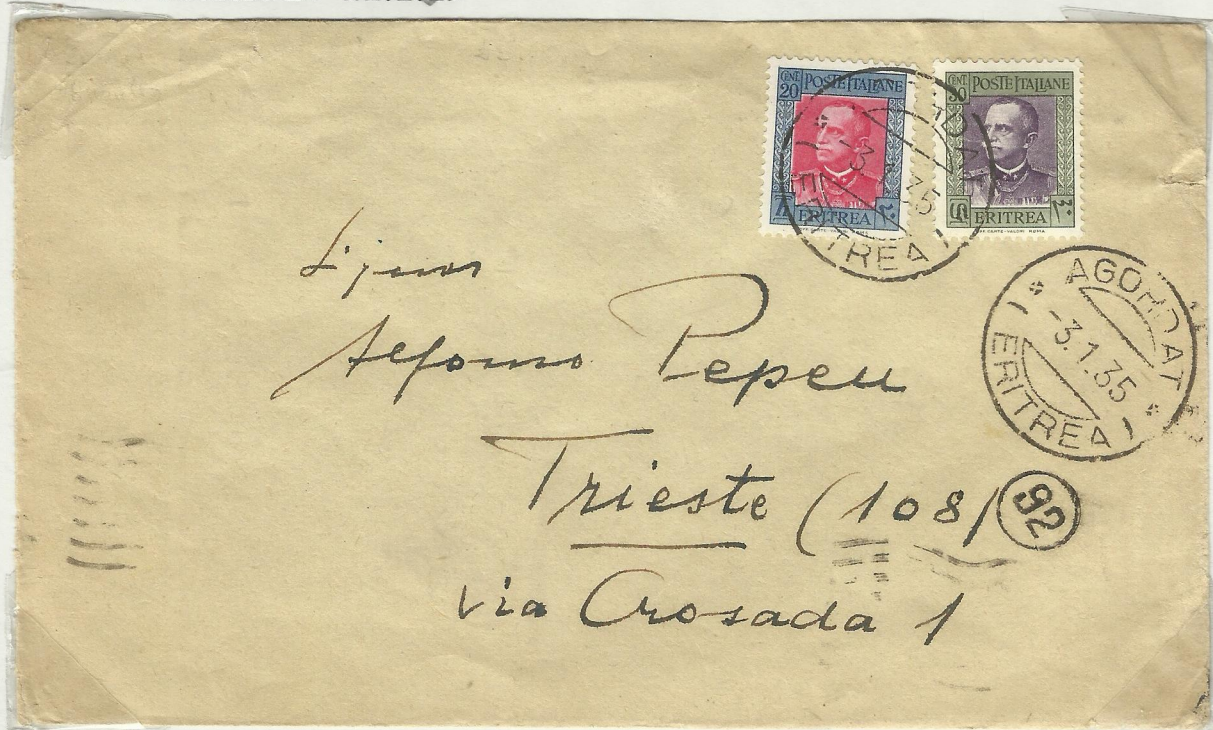
LETTERS WITHIN ERITREA AND TO ITALY

60c: 16.3.1925-15.8.1927



Letter to Italy. Canc: Asmara 12.1. 1927 Arr.rev.: Napoli 22.1.1927

50c: 16.8.1927-11.1.39



Letter to Italy. Canc.:Agordat 3.3.1935

**LETTERS INTERNAL AND TO ITALY 75 c (-20g) 12.1.1939-1942**



Letter to Italy Canc. Asmara Partenze, 31.1.1939 Arr.rev.: Treviso 11.2.1939

**OFFICIAL MAIL, 25c 16.8.1927-11.1.1939 (HALF LETTER RATE)**



Official mail to Italy, Canc.: Asmara, 27.11.1938

# LOCAL LETTERS,

25c (-20g) 16.8.1927 -1942



Letter sent within Cheren. Canc.: Cheren 4.4.1940



Letter sent within Asmara. Canc.: Asmara 28.5.1940 Arr.: Asmara 3.6.1940

**LOCAL REG. EXPRESS LETTER 40c, 21.7.1890-30.11.1916**



Local reg, express letterfront. Postage 50 c. Local letter: 5c, Reg.fee 10c, +express fee 25 c. Canc.: Asmara Racc. 306.1919

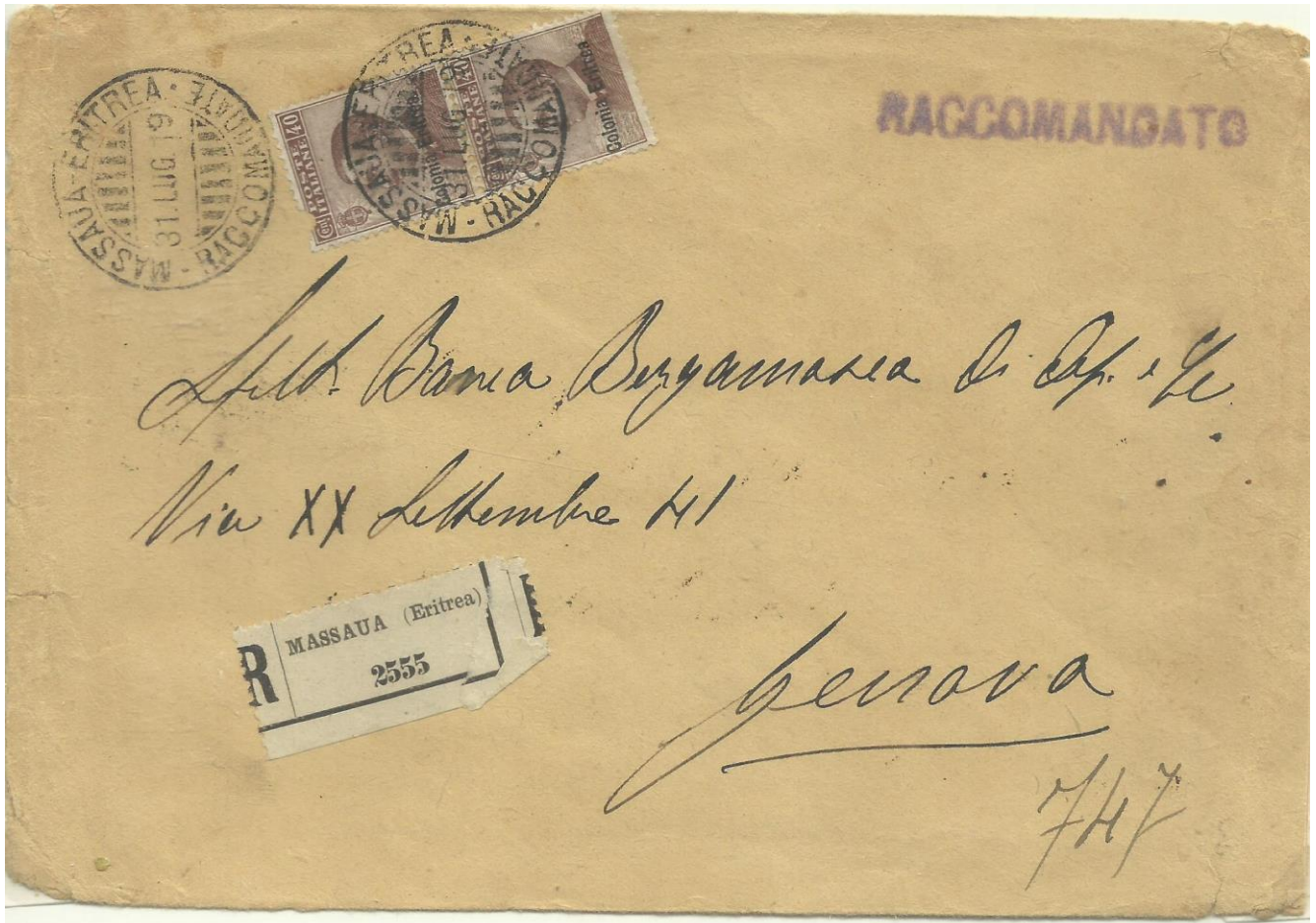
**REG. LETTER TO ITALY 65c,(15-30g) 1.1.1916-28.2 1919**



Reg letter to Italy. Letter 40c, Reg.fee 25c, Canc. Massaua R. 29.6.1917

**REG LETTER INTERNAL AND TO ITALY**

**80 C, (20-40g) 1.3.1919-31.1.1921)**



Reg.letter. Letter 50c, Reg. 30c Canc.; Massaua 31.7.1919 Arr. Genova 14.8.1919

**L 1.30 1.2.1921-31.12.1922**



Reg.letter,. Letter 80c.Reg.fee 50c.Canc.: Adi Ugri 24.3.1922

Transit; Brindisi 9.4.1922, Arrival: Roma 14.4.1922

**REG LETTER INTERNAL AND TO ITALY**

**L 1, (50c+50c) 1.1.1923-15.3.1925**

**Canc.: Asmara 7.5.1924**



**L 1.20 (60c+60c) 15.3.1925-31.8.1926**

**Canc.: Asmara 16.6.1926**

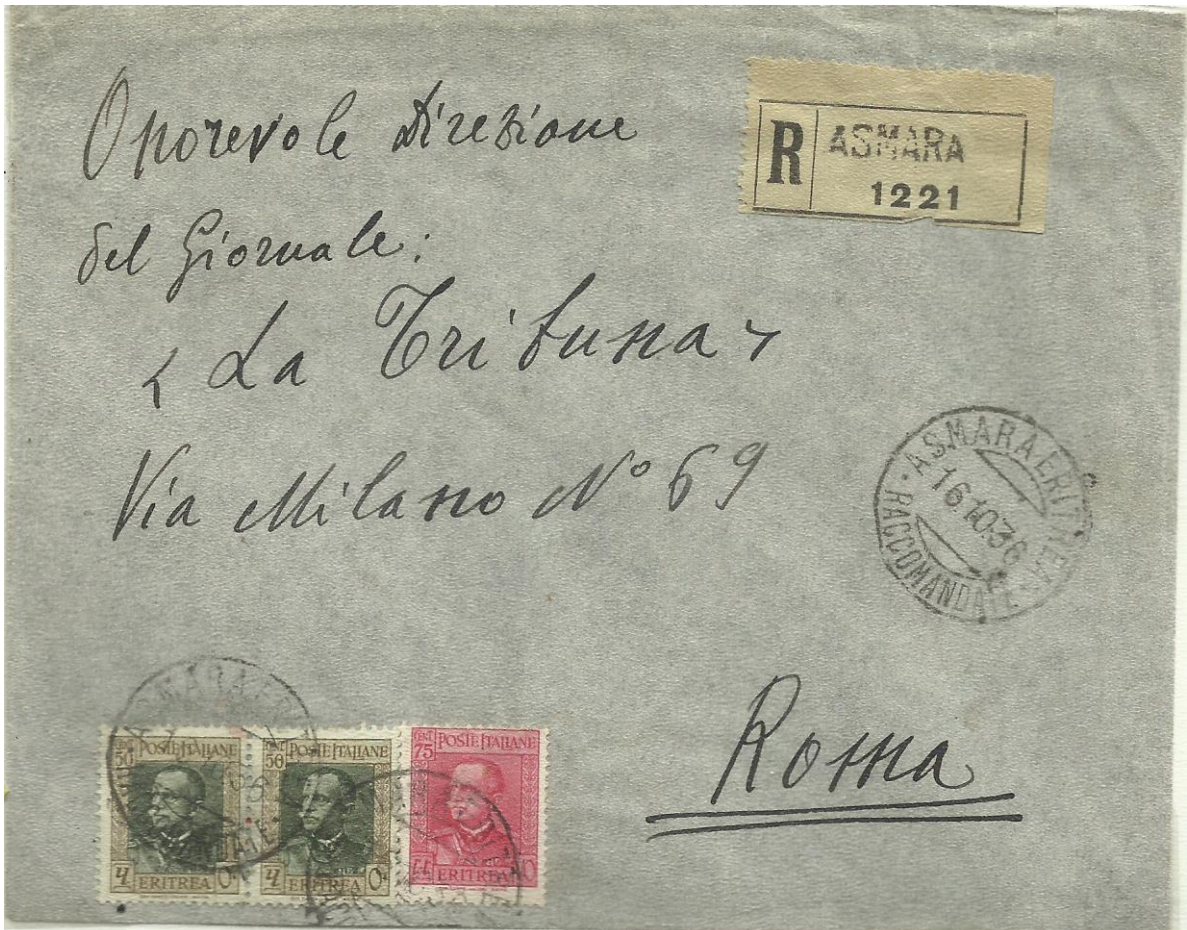


**REG LETTERS INTERNAL AND TO ITALY**

**L 1.85 (60c+L 1.25) 1.9.1926-15.8.1927** Canc. Asmara 26.3.1927



**L 1.75 (50c+L 1.25) 16.3.1927-11.1.1939** Canc: Asmara 16.10.1936



**REG LETTER L 2 (75c+L 1.25) 12.1.1939-1941**



Reg.letter to Italy. Canc.: Asmara Centro 14.1.1939 Arr. Treviso 29.1.1939

**INSURED LETTER TO ITALY. L 2.55 Aug 1927-July 1940**



Insured letter to Italy. Letter 50c, reg.fee L 1.25, Insurance 60c

Canc: Massaua Racc. 3.3.1936, Arr, reverse: Roma 13.3.1936

# INTERNAL EXPRESS LETTER

40c (15c+ express 25c) 1.9.1905-31.12-1919



Express letter to Italy. Canc.: Massaua 12.2.1907 Arr.rev: Sengalha 21.2.1907

L 1.30 (60c+ express 70c) 16.3.1925-31.8.1926



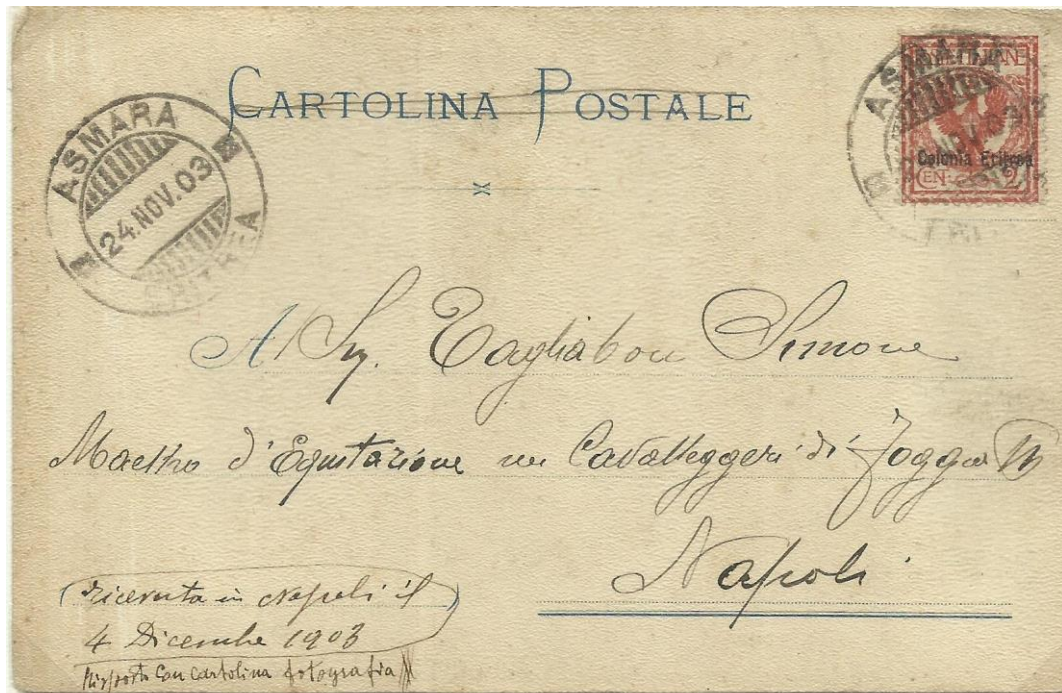
Express letter to Italy Canc.: Asmara, 24.3.1925 Arr.rev.: Cremona 7.4.1925

**POSTCARD only date and signature**

**2 c 1900-28.2.1919**



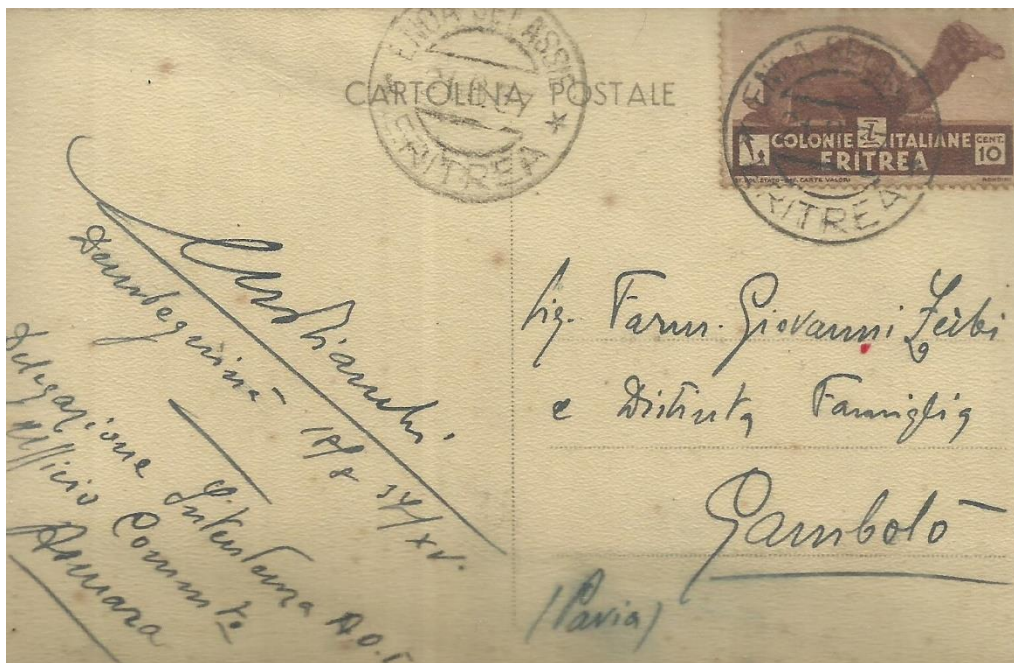
Postcard with only sender to Italy. Postage: 2c  
Canc: Saganeiti (Eritrea) 28.2. 1901



Postcard with only sender to Italy. Canc.: Asmara 24.11.1903

**POSTCARDS SENT INTERNAL AND TO ITALY  
ONLY DATE AND SIGNATURE**

**10 c , 1.1. 1923-11.1. 1939**



Postcard only date and signature. Canc.: Enda Selassie, 24.8.1937

**20c, 12.1.1939- (1942)**



Postcard only date and signature, Canc.: Asmara Partenze, 15.3.1939

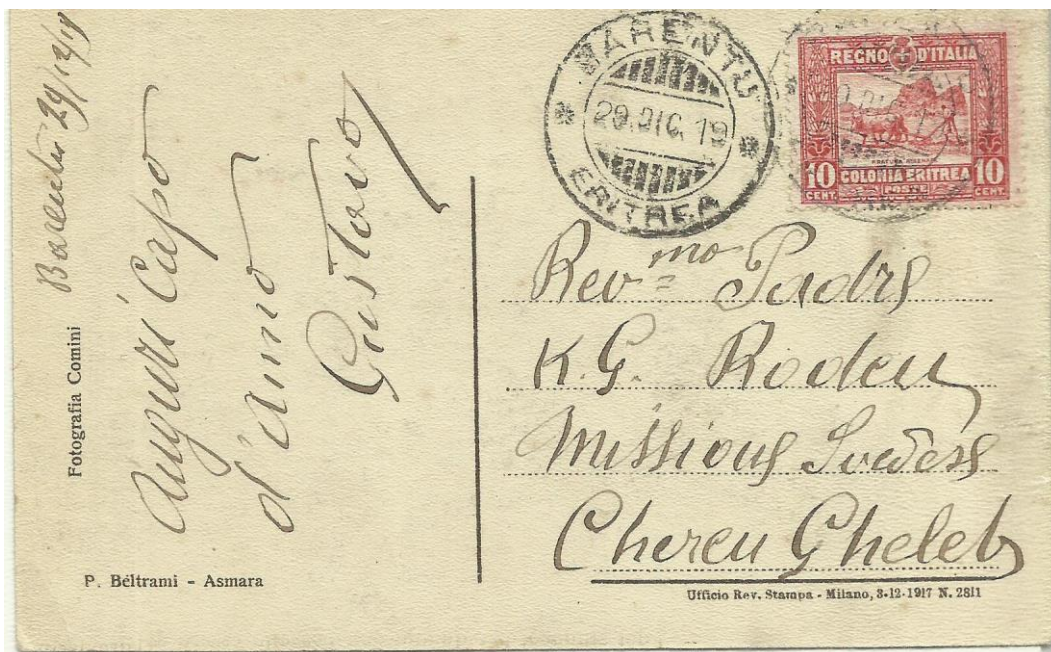
**POSTCARDS SENT INTERNAL AND TO ITALY  
 PICTURE POSTCARDS WITH NO MORE THAN 5 WORDS**

**5c, sept 1905- Aug 1918**



Internal postcard to Gheleb (Cheren) Canc.: Asmara 21.12.1931

**10c Aug 1918- 31.1. 1921**

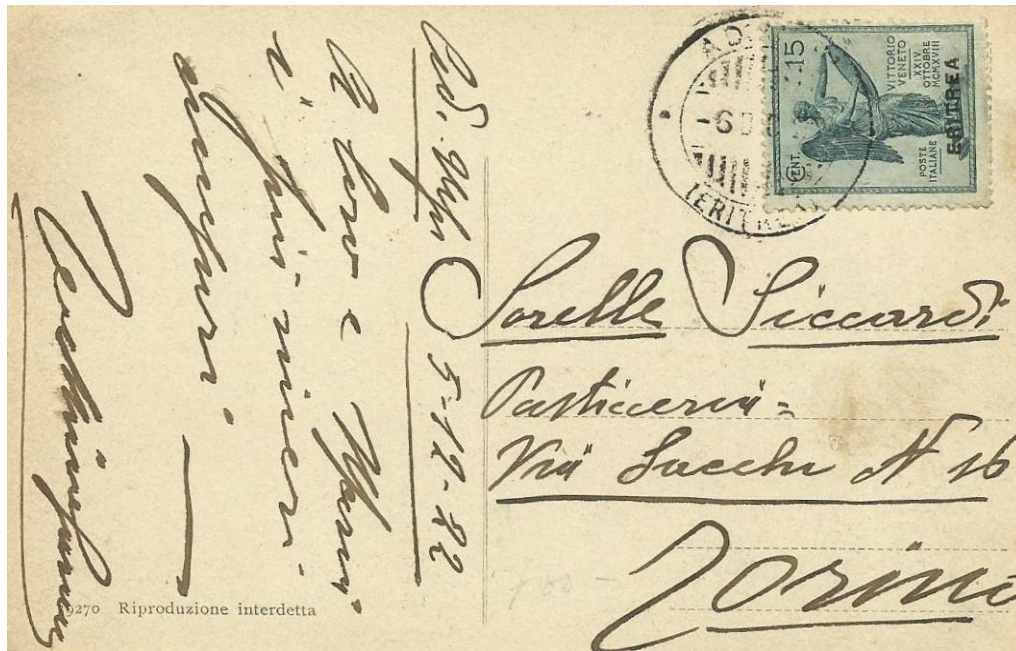


Internal postcard to Gheleb (Cheren). Canc.: Barentu 29.12.1919

## POSTCARDS SENT INTERNAL AND TO ITALY

Picture postcards with no more than 5 words

15 c. 1.2.1921-31.12.1923



Postcard, 5 words to Italy. Canc.: Adi Ugri, 6.10.1922

20c. 16.3.1925-11.1.1939



Postcard, 5 words to Italy. Canc.: Posta Militare No 70, 21.10.1935

# POSTCARDS SENT INTERNAL AND TO ITALY

## PICTURE POSTCARDS STANDARD MESSAGE

10c, 1883-28.2. 1919



Internal postcard. Canc.: Asmara 2.3.1917 Arr.; Cheren 3.3.1917



Internal postcard. Canc.: Asmara 11.12.1935 Arr.: Cheren 15.12.1915

Marking: DORO LA PARTENZA

# POSTCARDS SENT INTERNAL AND TO ITALY

## PICTURE POSTCARDS STANDARD MESSAGE

15c, 1.3.1919-31.1.1921



Postcard to Italy, Canc.: Cheren 10.12.1919 Returned to sender.

Arr.: Cheren 14.2.1920

30c, 1.1.1923-15.3.1925

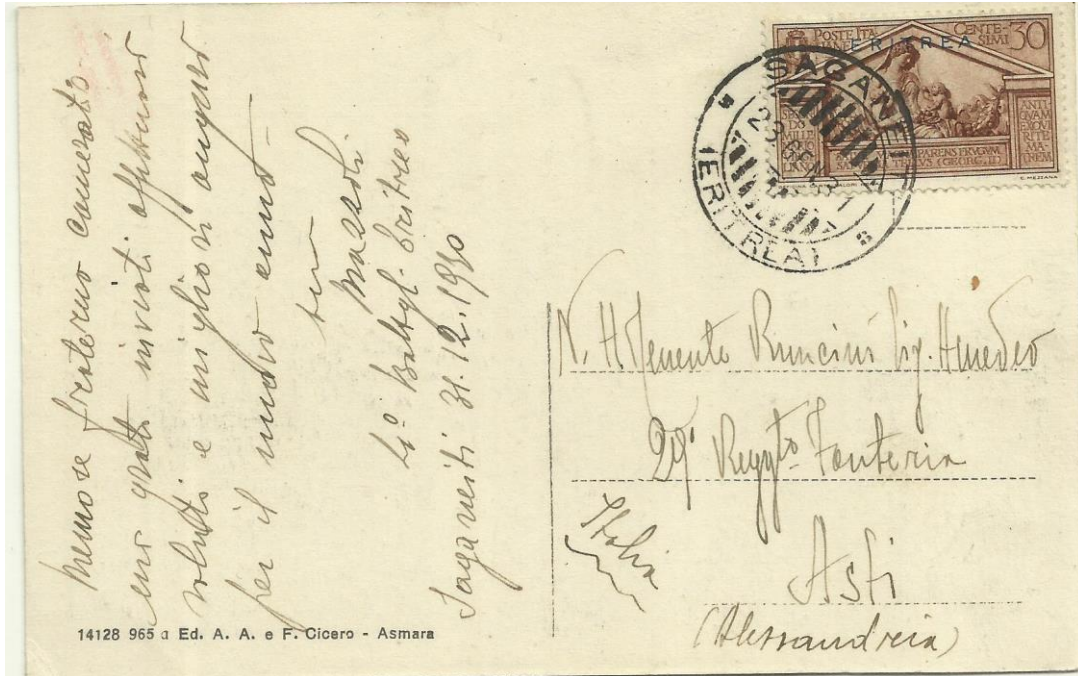


Postcard to Italy. Canc.: Asmara Eritrea Partenze, 6.11.1923

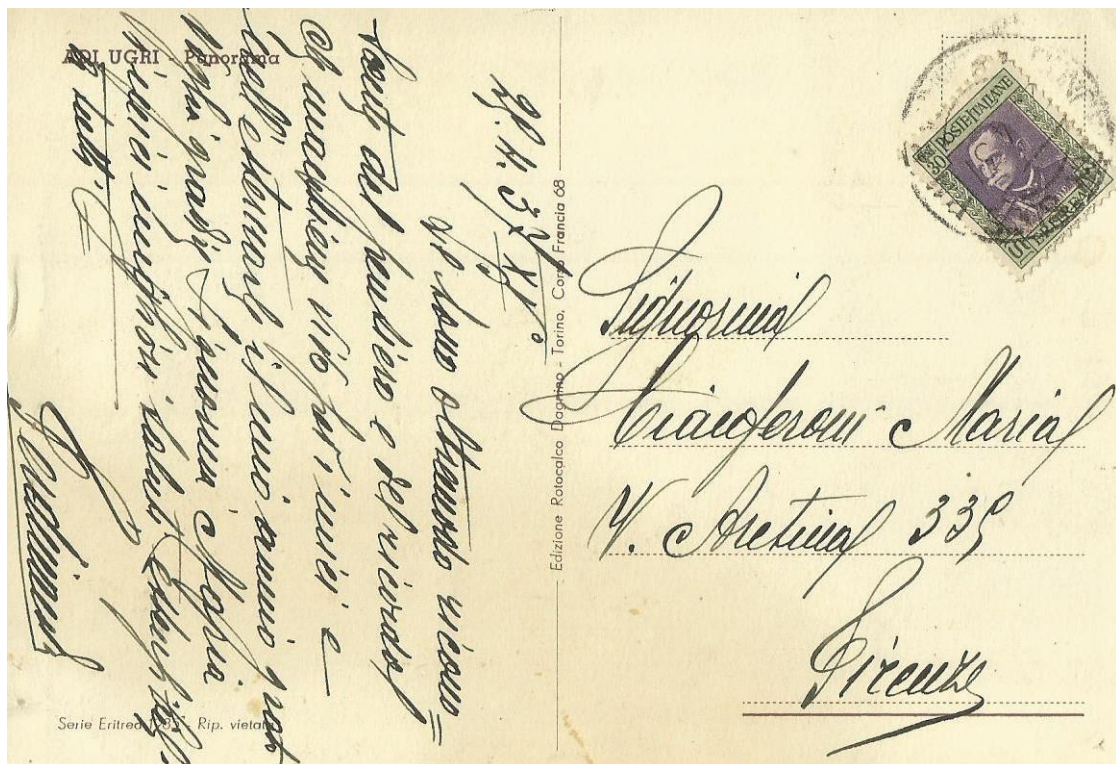
**POSTCARD SENT INTERNAL AND TO ITALY**

**PICTURE POSTCARDS STANDARD MESSAGE**

**30c, 16.8.1927-11.1.1939**



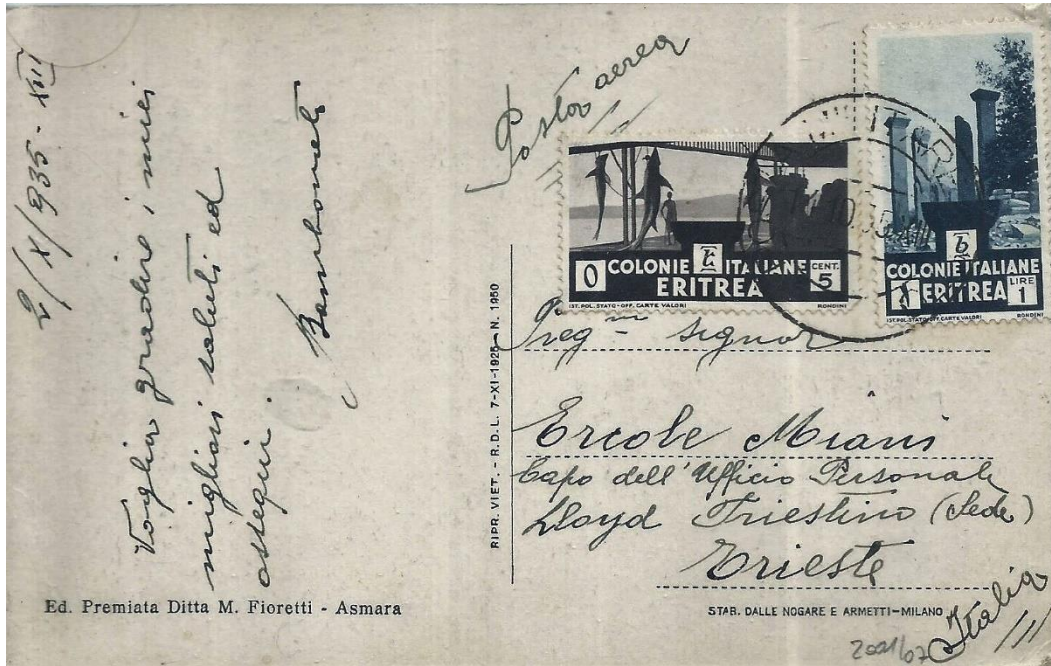
Postcard to Italy. Canc.; Saganeiti 23.1.1931



Postcard to Italy. Canc.:Concentramento Suss P.M.25.4.1937

# INTERNAL POSTCARDS AIR-MAIL

L 1.05 ( 30c + airmail 75c) 11.4.1929-31.10.1935



Airmail postcard to Italy, Canc.: PM 70 2.10 1935

L 1.25 ( 25c+airmail L 1) 1.11.1935- 1941

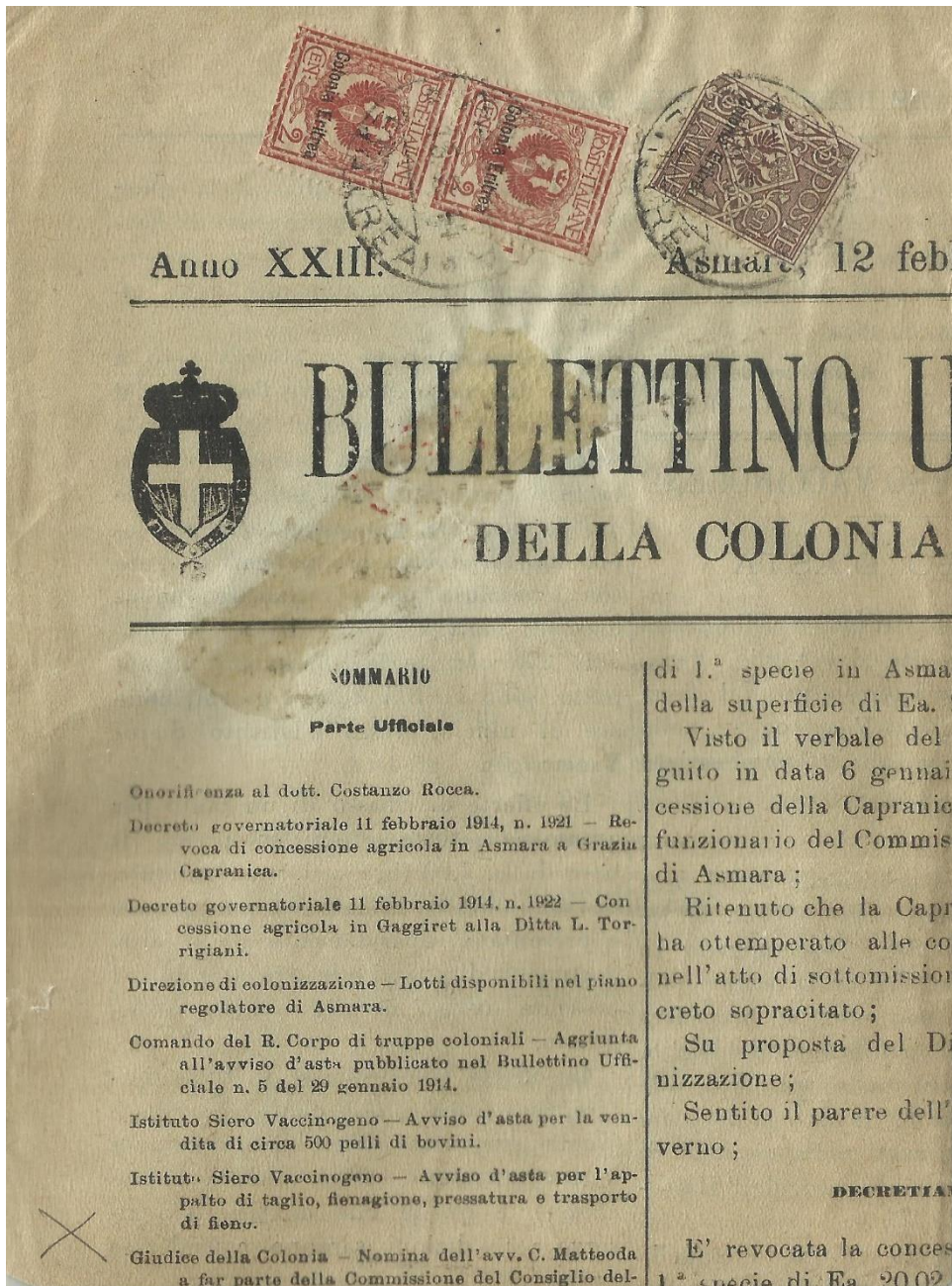


Airmail postcard, only 5 words, Canc. Asmara 31.1.1940 Arr Genova 9.2.1940

5c overfranked

PRINTED MATTER

5C, 1889-28.2.1919 (150-200G)



Newspaper, piece, Cancelled: Asmara 13.2.1914

## POSTAL DUE



Air letter from Italy to Eritrea. Postage L 1.65 Canc.: Napoli 17.5.1939

Postage due 50c. Canc.: Asmara 20.5.1939

### 25c local letter , 16.8.1927-1941



Unfranked local letter sent within Addis Abeba .Canc: Addis Abeba 28.2.1940 and Sezione Portalettere 29.2.1940 and Sconosciuto a portalettere=Unknown of postman

POSTAL DUE



Internal letter from Massaua to Adi Caie letter Postage 15c

Canc.: Massaua 30.8.1913.

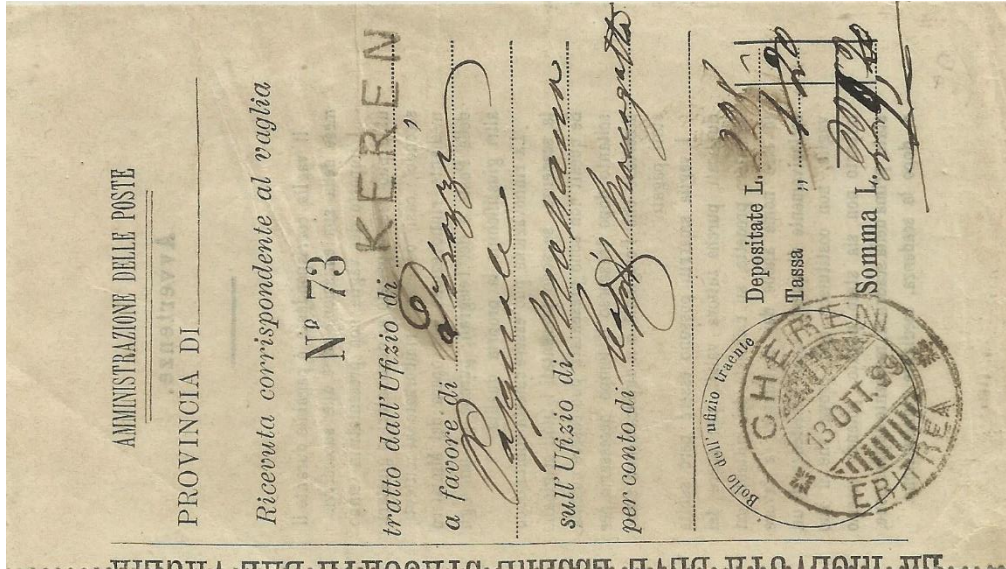
Postage due:

30 cent, Canc: Adicaie 8.9.1912

# MONEY ORDER

**L 1.20**

Coupon L 1.20 Canc. Cheren 19.10.1899.



# L 1 to Italy



Money order to Italy.. Canc.: Saganeiti 4.4.1936 Arr.rev.: Roma 20.4.1936

# PARCEL DISPATCH

Mod. 251 COLONIA ERITREA Numero del Pacco

**BULLETTINO di SPEDIZIONE**  
di Pacco Postale  
da 3 a 5 chilogrammi  
diretto nel regno od all'estero  
ove esista ufficio Italiano.

190 MASSAU

od. 253

Si spedisce un ..... (involto, cassetta, cestino, rotolo, pacco)

Valore dichiarato Lire ..... Cent. ....  
Dichiarazione del contenuto: *Caffè*

Al *Signor Tenente Leonello Mariani*  
*2° Reggimento Bersaglieri*  
*Rovio Prov. di Roma*

Nome, cognome, condizione e domicilio del mittente:  
*Paolo D'Amico Capitano 2° Reggimento Bersaglieri*  
*Med. Maggiore*

Peso del Pacco Grammi: *1100*

Tasse riscosse per trasporto: Lire 1, Cent. 00  
" assicurazione: .....  
" assegno: .....  
" pacco ingombrante: .....  
Totale: .....  
Ufficio che deve distribuire il pacco: *Prov. di .....*

FRANC DE DROIT

1907 284



Qui si indicano i francobolli necessari per le tasse di assicurazione, di assegno e dei pacchi ingombranti

Il francobollo impresso qui sopra e quelli aggiunti devono essere annullati col bollo dell'ufficio speditore.

Parcel to Italy. Postage L1. Canc: Massaua 3.5.1906, Franc droit :Sender will pay all costs

Mod. 251 COLONIA ERITREA Numero del Pacco

**BULLETTINO di SPEDIZIONE**  
di Pacco Postale  
diretto nel regno od all'estero  
ove esista ufficio Italiano.

470 ASMARA

Si spedisce un *involto* ..... (involto, cassetta, cestino, rotolo, pacco)

Valore dichiarato Lire ..... Cent. ....  
Assegno ..... Lire ..... Cent. ....

Dichiarazione del contenuto: *Unguento di Leonardo*

Nome, cognome, qualità del destinatario: *Al Sig. Giuseppe Negro*

Luogo di destinazione: *Palermo Prov. di Palermo*

Domicilio del destinatario: *Via S. Francesco di Paola n. 18*

Nome, cognome, condizione e domicilio del mittente:  
*Alberto Negro, ufficiale coloniale*  
*Asmara*

Impronta del suggello col quale è stato chiuso il pacco (obbligatoria per pacchi con dichiarazione di valore)

Peso del Pacco Grammi: *130*

Tasse riscosse per trasporto: Lire 60, Cent. 00  
" assicurazione: .....  
" assegno: .....  
" pacco ingombrante: .....  
Totale: .....  
Ufficio o Collettoria di 1ª Classe che deve distribuire il pacco: *Palermo*

DA RIEMPIRSI DAL MITTENTE



Parcel to Italy L 2.25. Canc, Asmara 19.19 1906 Arr:Palermo 9.11.1906



# PARCEL DISPATCH

Govt. Press 6968 A. 1932-275,000 ex.

CP 2 (Verso)

## INSTRUCTIONS À DONNER PAR L'EXPÉDITEUR

L'expéditeur est tenu d'indiquer, au verso du bulletin d'expédition et sur le colis, la manière dont il doit être disposé de son envoi en cas de non-délivrance. Les instructions ci-dessous sont seules admises. Elles peuvent être données soit par écrit, soit en soulignant ou en complétant le contexte imprimé.

LES COLIS POUR LESQUELS L'EXPÉDITEUR N'A PAS DONNÉ D'INSTRUCTIONS SONT RENVOYÉS SANS AVIS.

Si la livraison du colis décrit au recto du présent bulletin ne peut avoir lieu, je demande:

- a) que le colis soit renvoyé à l'expéditeur;
- b) que le colis soit remis au destinataire dans une autre localité;
- c) que le colis soit remis au destinataire dans une autre localité;
- d) que le colis soit vendu à mes risques et périls;
- e) que le colis soit remis au destinataire dans une autre localité;
- f) que le colis soit traité comme abandonné.

(1) Indiquer le montant de la somme à percevoir éventuellement si le colis doit être livré sans perception du primitif.

(2) Indiquer éventuellement le nom et l'adresse d'une tierce personne dans le pays de destination.

(3) Les indications sous (d) et (e) et la première partie de (f) "soit vendu à mes risques et périls" ne sont pas admises pour les colis à destination de la Grande-Bretagne, Colonies Britanniques et les Etats-Unis d'Amérique.

L'expéditeur qui désire que le colis ne soit pas réexpédié doit l'indiquer par une annotation au recto du bulletin d'expédition et sur le colis. Il en est de même s'il désire que le colis lui soit renvoyé dans un délai plus court que le délai réglementaire de conservation.

## RÉCÉPISSÉ DU DESTINATAIRE

Le soussigné déclare avoir reçu le colis désigné au recto du présent bulletin.  
 les colis désignés  
 A \_\_\_\_\_ le \_\_\_\_\_ 193\_\_ Signature \_\_\_\_\_

Parcel card from Egypt with 2.15 pia postage. Cairo 20.12.1935  
 Eritrean parcel stamps 5 Lire Massaua 3.7.1936

CP 2 (Recto)

COUPON

BULLETIN D'EXPÉDITION

Expéditeur: *Gastone Fragnoni*  
 Société *Goldiate Italiana*

Destinataire: *Mahroug*  
 Adresse: *Misra*

Montant de la somme: *455*  
 (Lire)

Postage: *2.15*  
 (Pia)

Date: *20.12.1935*

Signature: *Gastone Fragnoni*

# AVIS DE RECEPTION

20C 1883-28.2.1919

A. bis

N. 28

**AMMINISTRAZIONE DELLE POSTE ITALIANE**  
(ADMINISTRATION DES POSTES D'ITALIE)

---

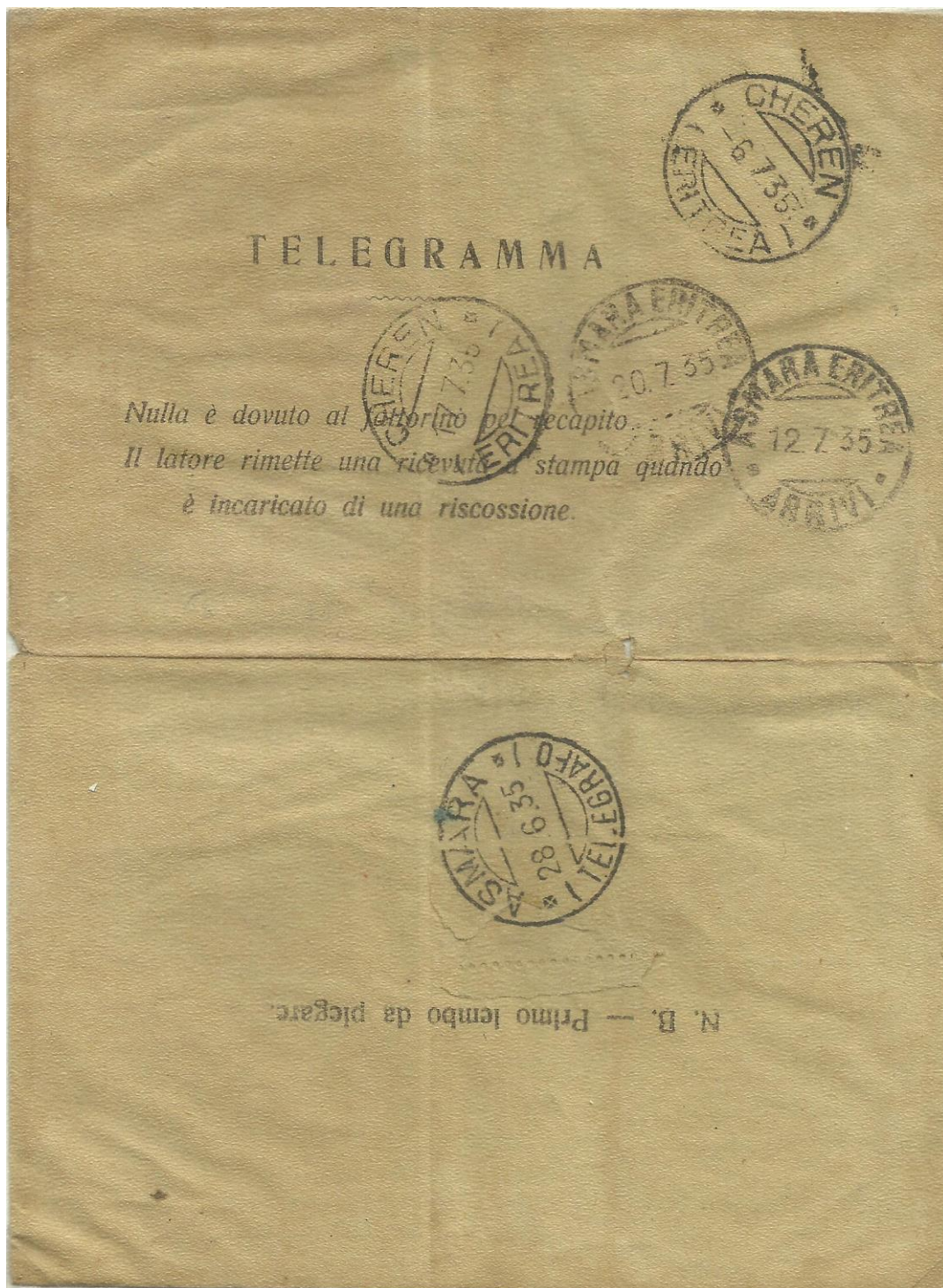
<p><b>RICEVUTA DI RITORNO</b></p> <p>di un<sup>(a)</sup> <u>Lettera raccomandata</u></p> <p>(b) <u>ordinaria</u></p> <p>per Lire<sup>(c)</sup> <u>                    </u></p> <p>spedita dall'ufficio di <u>Sparanise</u></p> <p>sotto il N. <u>352</u> addi <u>9</u> <u>2</u> 18<u>97</u></p> <p>all'indirizzo del Signor <u>Giovanni</u> <u>Piana</u></p> <p>a <u>Asmara</u> Provincia di <u>Asmara</u></p>	<p><b>AVIS DE RÉCEPTION</b></p> <p>d'un<sup>(a)</sup> <u>lettre recommandée</u></p> <p>enregistré par le bureau de <u>Sparanise</u></p> <p>sous le N. <u>352</u> le <u>9</u> <u>2</u> 18<u>97</u></p> <p>adressé à M. <u>Jean Piana</u></p> <p>a <u>Asmara</u> Pays de <u>l'Afrique</u></p>
	
<p>(a) indicare se di oggetto raccomandato — di lettera assicurata — di pacco postale — di vaglia</p> <p>(b) indicare con valore dichiarato, quando sia una lettera assicurata od un pacco.</p> <p>(c) indicare la somma in tutte lettere.</p>	<p>(a) d'un objet recommandé — d'un colis postal — d'une lettre avec valeur déclarée de Fr. .... d'un colis postal avec valeur déclarée de Fr. ....</p>
<p><b>Avvertenza.</b> - La presente ricevuta deve essere riempita sul rito dall'ufficio speditore e sul rovescio da quello di destinazione e propriamente nella parte italiana, se l'oggetto cui si riferisce è diretto nell'interno del regno e nella parte francese, se diretto all'estero; poi si spedisce a destinazione contemporaneamente all'oggetto stesso, in busta aperta raccomandata.</p>	

Avis de reception from Italy, Canc.: Sparanise 9.2.1897.

Arr.rev.Asmara 23.2.1897



# TELEGRAM



Telegramme sent from Asmara to Cheren.Canc.: Asmara Telegrafo 28.6.1935

Cheren 6.7.1935, Asmara 12.7.1935, Cheren 17.7.1935, Asmara 20.7.1935

**INTERNAL AIR- LETTERS, L 1.25 ( 50c+ airmail 75c) 11.4 1929-31.10.1935**



Air letter to Italy. Canc.: P,M No 25, 29.10.1935. Arr.rev.: Napoli

**L 1.50 (50c+ airmail fee L 1) 1.11.1935 11.1.1939**



Air letter to Italy. Canc.: Massaua 23.4.1937. Arr.rev Milano 28.4.1937

**INTERNAL AIR- LETTER, L 1.50 (50c+ airmail fee 1.1.1935-11.1.1939)**



Air letter to Libya (Italian Colony) Canc.: Assab 17.4.1937 Arr.: Tripoli 22.4.1937

**L 3.50 ( 50c+ airmail fee L 3) 1.11.1935-11.1.1939**



Air letter to Italy. Canc. Massaua, 17.5. 1936. Arr.rev.: Torino 20.7.1936

**INTERNAL AIR- LETTERS, L 1.75 (75c+ airmail fee 12.1.1939-1942**



Censored Air letter to Italy. Canc.: Asmara 31.8.1940. Italian censor label



Air-mail letter to Italy, Canc: P.M No 1045, 14.12.1940



## INTERNAL EXPRESS AIRLETTER

L 2.75 (50C+ airm. L1 +express L 1.25) 1.1.1935-11.1.1939



Express airletter to Italy Canc.: Decamere 23.8.1936, Arr:Cuneo 27.8.1936

L 3.75 (50c +airm. L2 +express L 1.25) 1.1.1935-11.1.1939



Express airletter to Italy Canc.: P.M Suss 31.7.1936. Arr.: Roma 3.8.1936

# EXTERNAL LETTER

25c 1883-31.1.1921



Prestamped letter with add.postage 5c o Germany,  
Canc.: Massaua 7.12. 1895 Arr. Oppeln 23.12.1895



Letter to Austria (Trieste was a part of the Austrian.-Hungary Empire until 1918)  
Canc: 25.3.1907. Arr.rev.; Trieste 1, 5.4.1907

# EXTERNAL LETTERS TO EGYPT

## 15C July 1906- 1916

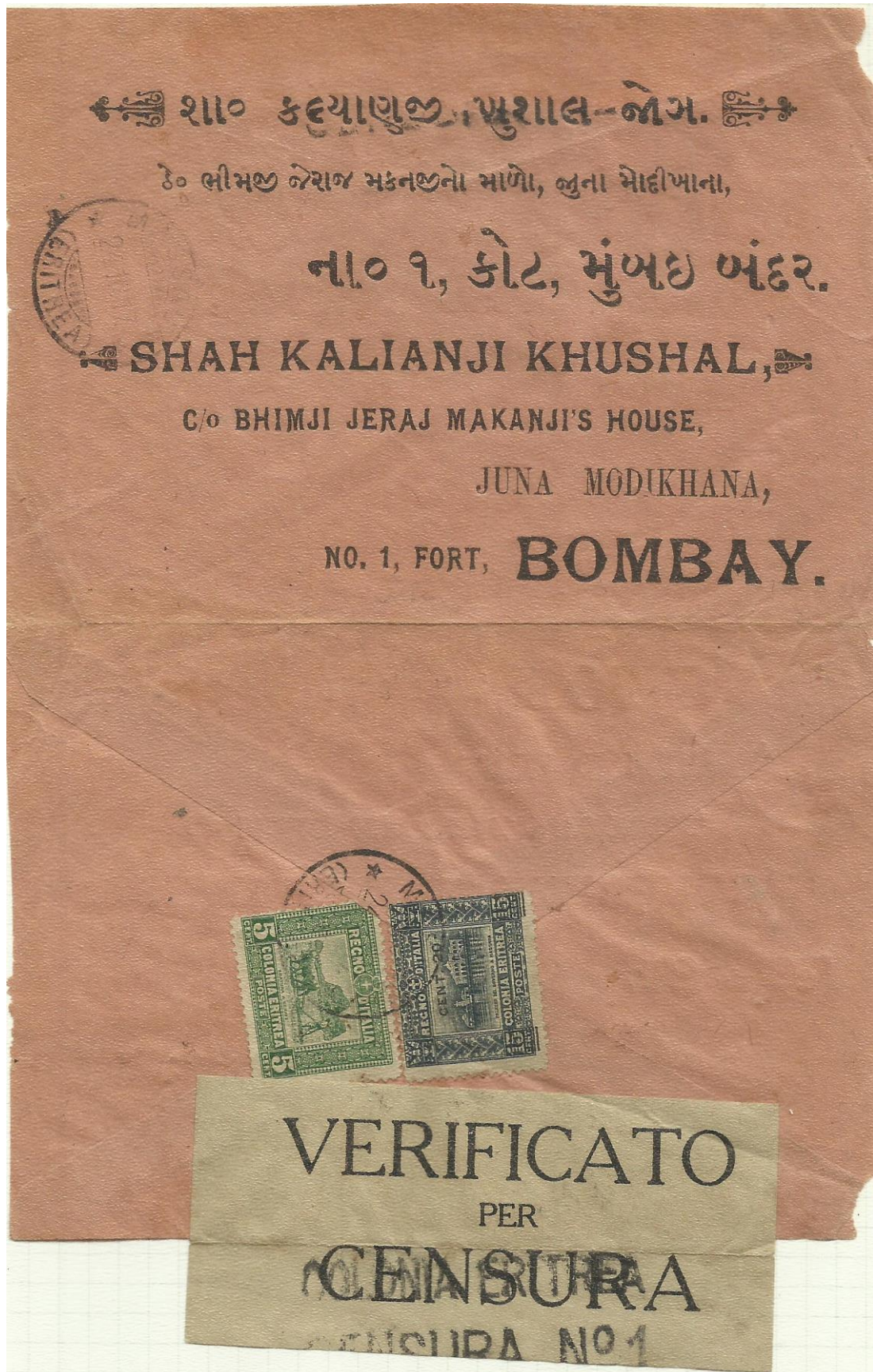
A special agreement with the Egyptian government allowed all letter from Eritrea to Egypt is to be taxed according to internal tariff.



Censored letter to Egypt. Canc.: Massaua 27.1.1914

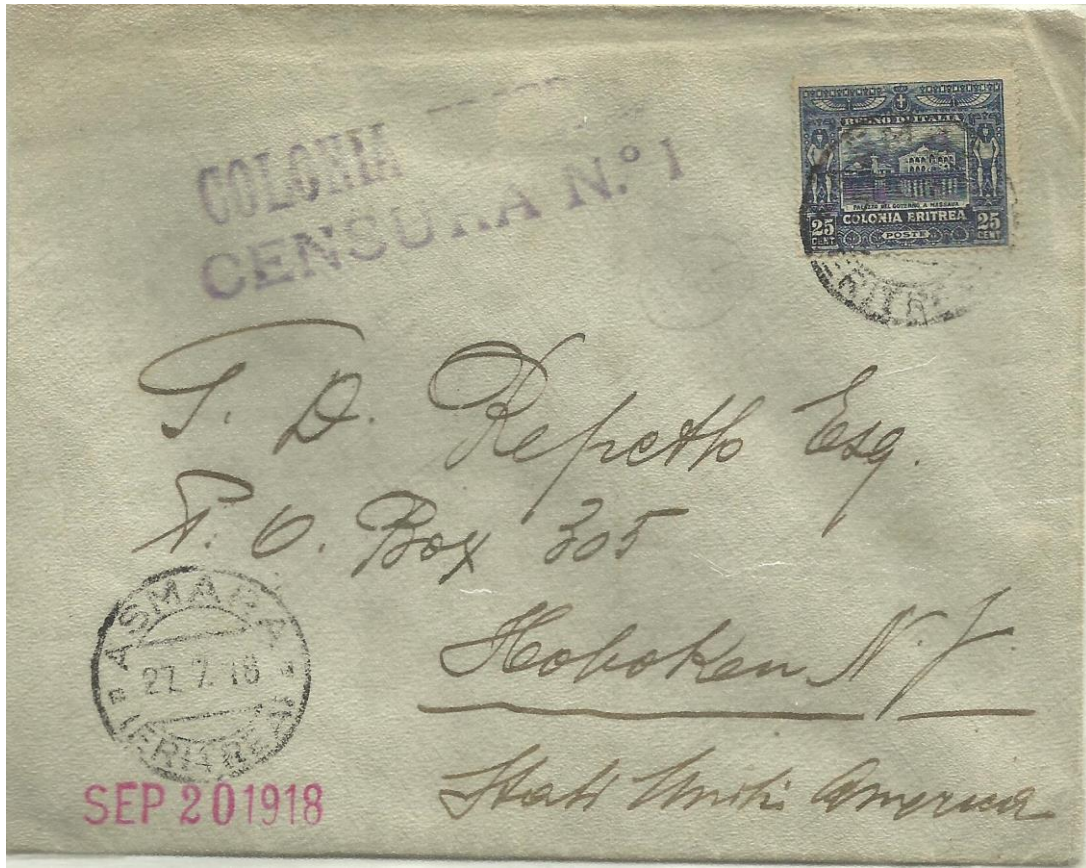
# EXTERNAL LETTERS

25C 1883-31.1.1921



Censored letter to India . Canc.; Massaua 24.10.1917

**EXTERNAL LETTER 25C 1883-31.1.1921**



Censored  
letter to USA,  
Canc.:  
Asmara  
27.7.1918.

**60 c 1.2.1921-31.12.1921**

L



Letter to Denmark Canc; Asmara 27.6.19 Arr .Charlottenlund 20.7.1921

# EXTERNAL LETTERS

L 1.60 (15-30g) 1.1.1922-31.12.1922



Letter to Sweden. Canc.: Barentu 11.5.1922. Arr.: Stockholm 10.6.1922

# EXTERNAL LETTERS

L 1. 1.2.1923-31.12.1925



Letter to England. Canc.: Asmara Partenze, 9.9.1925

## Postage rates development after WWI

After WWI a period of inflation struck many European countries including Italy and the postal rates raised. Foreign letter from 25c Jan 31, 1921 to 60c Febr. 1 1921 as a first step.

By manipulations that are regarded as highly dubious by economists the Fascist regime succeeded in stabilising the economy by 1927 to the extent that it permitted a limited reduction in postal rates for internal mail. The world recession of the 1930s allowed this rate to be maintained for a total of 17 years

# EXTERNAL LETTERS

L 1.25 1.1.1926-17.5.1941



Letter to **South Africa** Canc.: Posta Militare N. 105B 8.8.1936

Arr. rev.: Schweizer Rendre 12.10.1936

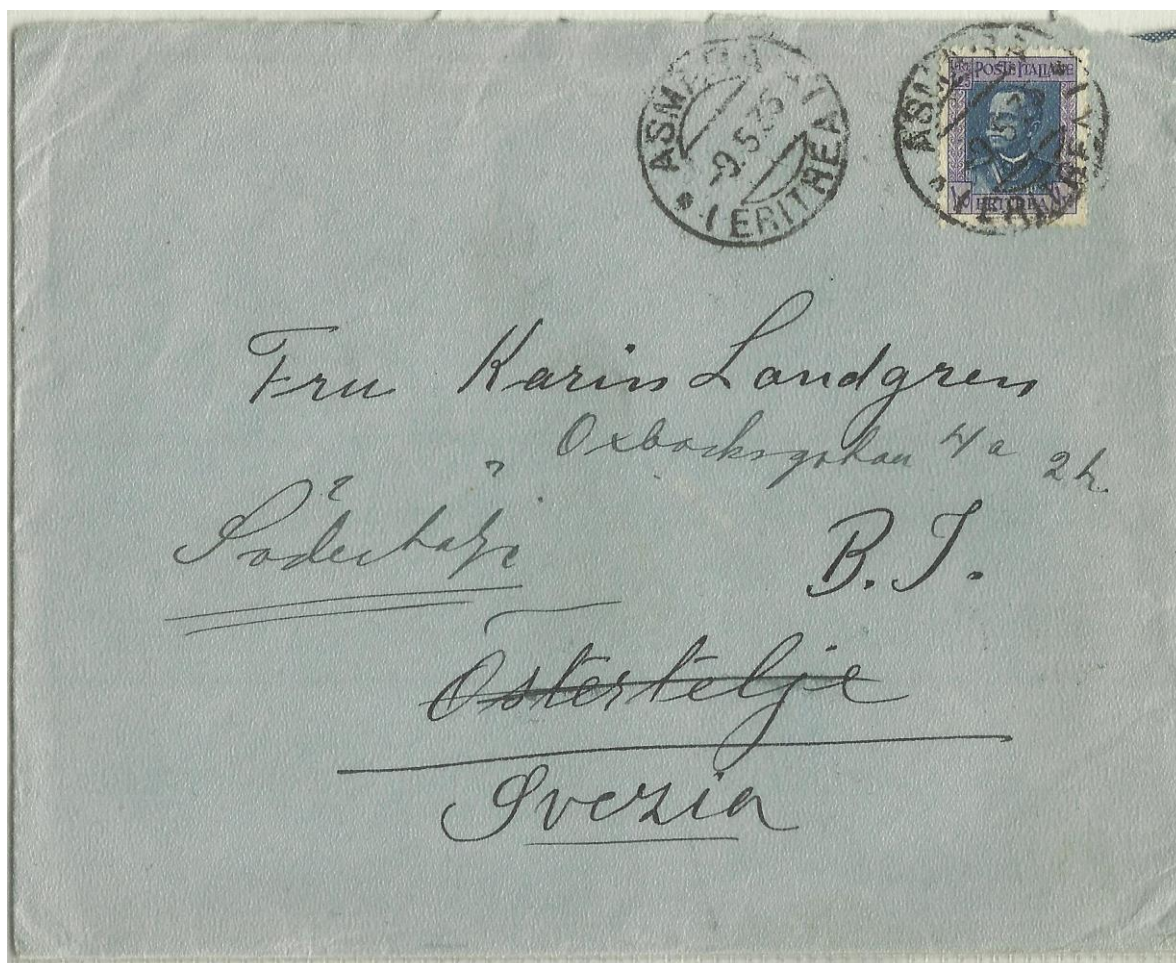


Letter to **China** . Canc.: Massaua 30.1. 1939 .Arr.: Tientsin

**EXTERNAL LETTERS L 1.25 1.1.1926-17.5.1941**



Letter to France. Canc.: Asmara 30.10.1930



Letter to Sweden Canc.: Asmara 9.5.1935 Arr.rev.: Östertälje 23.5.1935

# EXTERNAL REG. LETTERS

50 C (25c+reg.fee 25c) 1.1.1889-31.1.1921



Reg.letter (front) to France. Canc.: Massaua 13.4.1912,



Reg.letter to Switzerland, Semipostals.. Reg.label overprinted Barentu

Canc: Asmara 5.4.1818. Transit Milano 29.4.1919 Arr.rev.:Basel 1.5.1919

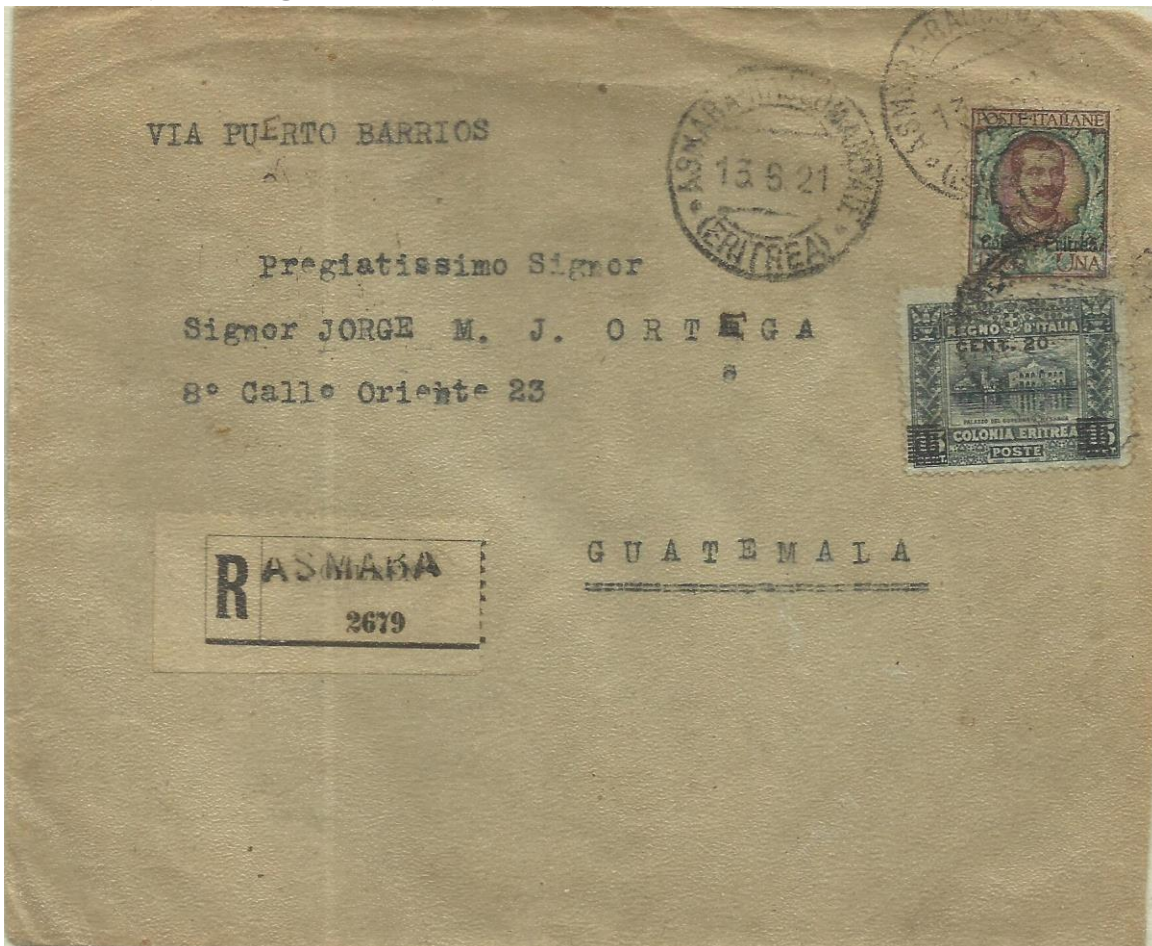
# EXTERNAL REG. LETTERS

45 C (20c internal.tariff +reg.fee 25c) July 1906-1916/17



Censored Reg.letter to Egypt. Canc.: Massaua 6.4.1917. Transit: Post Taufic 12.4.1917

L 1.20 (60c+reg.fee 60c) 1.2.1921-31.12.1921



Reg.cover to Guatemala.Canc:Asmara 13.6.21.Transit.New York 12.7.21Arr.Guatemala 22.7.1921

**EXTERNAL REG. LETTERS**

**L 1.60 (80c + reg. fee 80c) 1.1.1922-31.12.1922**



Reg cover to Reunion Canc. Asmara 2.5.1922. Trans. Aden 5.5.22 Arr Reunion 24.5. 22

**L 2.75 (L 1.25 + reg. fee L 1.50) 1.1.1930-17.5.1941**



Reg cover (front) to England. Canc. Massaua 23.1. 1936

**EXTERNAL REG. LETTERS**

**L 2.50 (L 1.25 + reg.fee L 1.25) 1.1.1926-30.6.1931**



Reg.cover to England Canc.: Asmara 25.6.1930 Transit: Bologna 7.7.1930

**EXTERNAL REG. PRINTED MATTERS**

**L 1.75 (50c (50-100g) + reg.fee L 1.25,) 1.1.1926-30.6.1930**



Reg. printed matter to France. Canc:Adi Caie 6.8.1927  
Transit: Brindisi Transit 16.8.1927.Arr.: Paris 21.8.1927

**L 1.75 ( 25c + reg.fee. L 1.50) 1.7.1930-17.5.1941**



Reg. printed matter to USA, Canc.: Asmara 7.1.1935.  
Transit: Napoli 16.1.35 Arr : Chicago 30.1 35

## EXTERNAL PICTURE POSTCARDS

with no more than 5 words

5c 1883-31.1.1921



Postcard to Egypt. Canc.: Massaua 19.9.1902

Transit: Post-Teuf 29.9.1902. Arr.: Suez 20.9.1902

25c 1.1.1926-1942

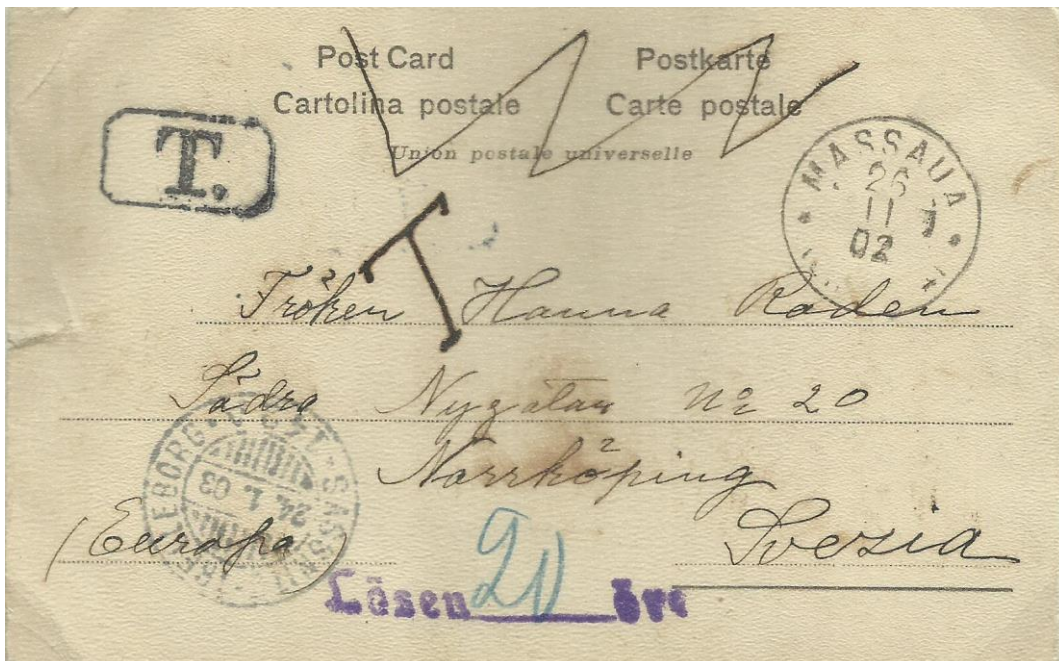


Postcard to Tasmania (Australia) Canc.: Adi Caie 2,11,1927

Transit: Aden 7.11.1927, Bombay 14.11.1927

## EXTERNAL POSTCARDS

10c 1883-31.1.1921



Unfranked postcard to Sweden. Postage due: 20 öre (double postage)

Canc.: Massaua 26.11.1902 Transit: Sassnitz-Trelleborg, 24.1.1903

## NAUFRAGIO - SHIP WRECK



Censored postcard to Sweden. Canc.: Cheren 9.3. 1918.

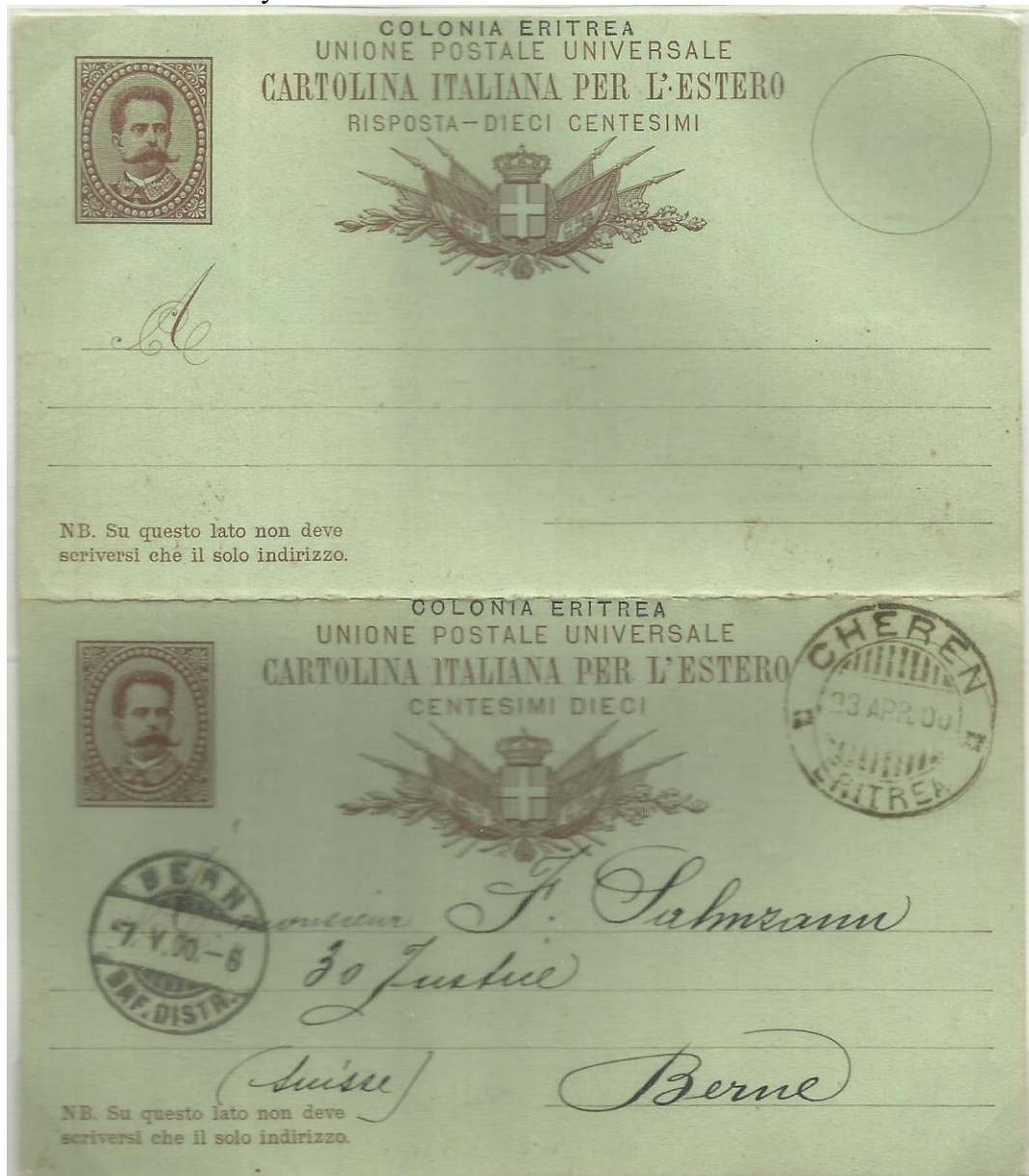
Transit: Bologna 28.5.1918 (80 days) NAUFRAGIO. Shipwreck

# EXTERNAL POSTCARDS

10c 1883-31.1.1921



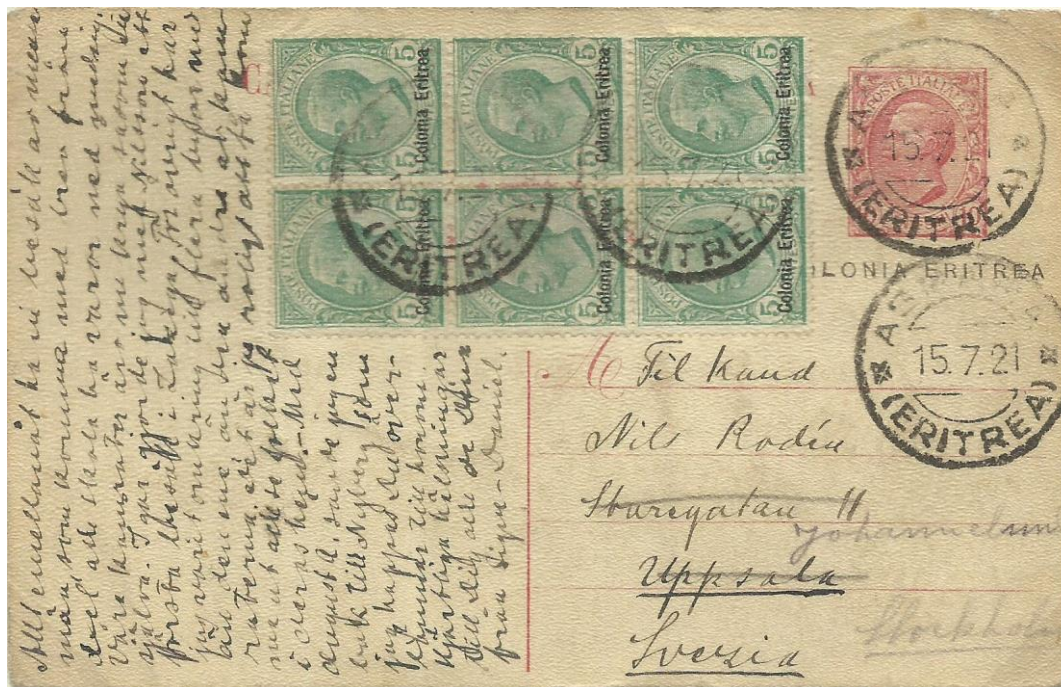
Postcard to Germany. Canc. Massaua 11.8.1893 Arr.: Ulm 29.8.1893



Double postcard to Switzerland. Canc: Cheren 23.4.1900. Arr; Bern 7.5.1900

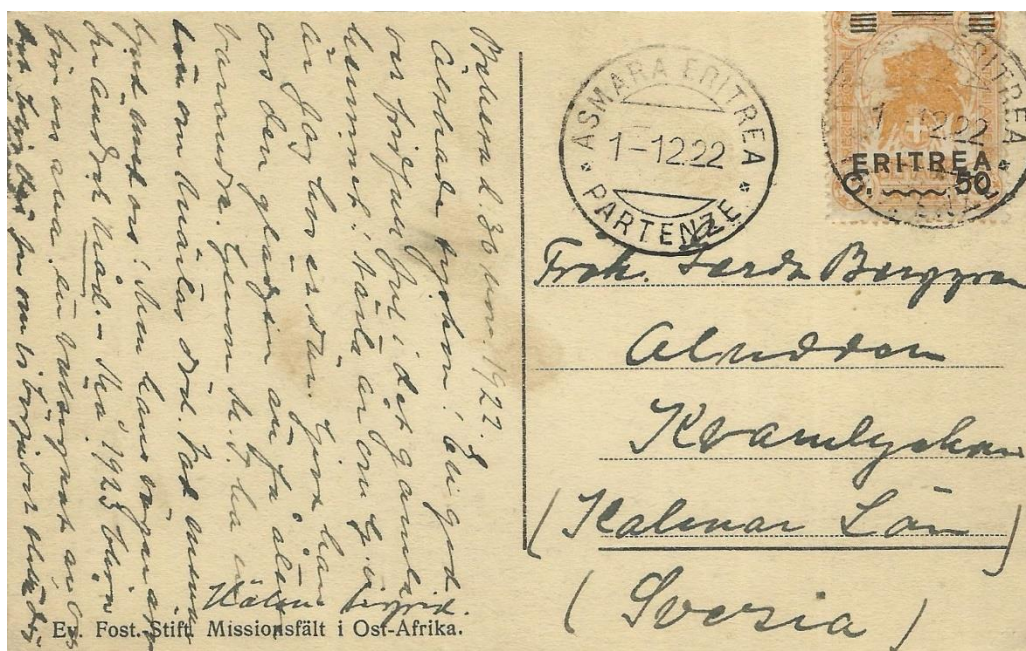
# EXTERNAL POSTCARDS

40c 1.2.1921-31.12.1921



Prestamped postcard with additional stamps to Sweden. Canc.Asmara 15.7.1921

50c. 1.1.1922-31.12.1922



Postcard to Sweden.Canc: Asmara 1.12.1922



# EXTERNAL POSTCARDS

## 75c 1.1.1926-1941



Postcard to Sweden. Postage correct but time of validity expired 31.10 1930 for the 25c stamp Postage due 20 öre (Double failing postage)  
 Canc.: Asmara 10.12.1930. T-stamp. Swedish postage due label and stamp.



Postcard to Sweden. Canc.: Asmara 5.12.1934. Unusual franking.

**EXTERNAL POSTCARD**

**75c 1.1.1926-16.5.1941**



Postcard to Sweden. Canc.: Cheren 10.2.1940

**EXTERNAL PRINTED MATTER ,**

**25 C 1.1.1926-16.5.1941**



Printed matter to France. Canc: Adi Caie, 29.12.1926

## EXTERNAL AIR MAIL LETTERS,

Air mail service was introduced to Eritrea in 1929.

When the service was extended to Somalia 1.11.1935

a rate of L 1 per 5 g was introduced for the whole A.O.I

**L 1.50 (50c+ airmail fee L 1)**

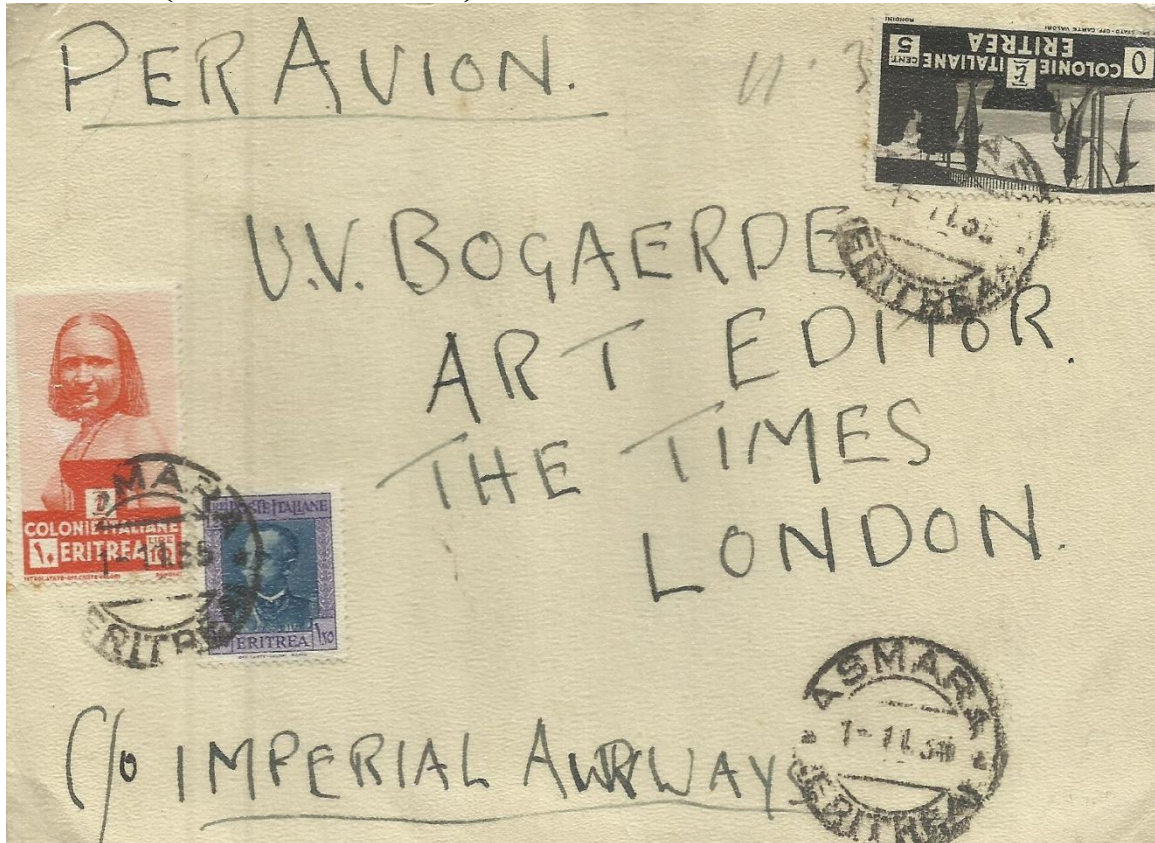


First flight to Djibouti, postage as internal. Only 10 letters flown.

Canc: Asmara Posta Aerea 25.11.1935. Arr.rev.: Djibouti 27.11.1935

**EXTERNAL AIR MAIL LETTERS,**

**L 11.30 (L2+ airmail fee )**



Air mail letter to England. Canc: Asmara 1.11.1935

**L 3 (L 1.25 + airmail fee)**



Air mail letter to Greece, Red Cross label. Canc. Asmara 26.11.1937

# EXTERNAL AIR MAIL LETTERS,

L 2.75 (L2+ airmail fee )



Air mail to German Austria. Canc: Asmara Ferrovie (railway)  
Arr.rev. Wien 17.3.1938



Air mail to Switzerland. Canc: Uff.post-Assab, 6.5.1940

**EXTERNAL AIR MAIL LETTERS L 3.85 ( L 1.25 + air mail fee)**



Air mail to Aden.(cover front) Canc: Asmara 11.2.1937

**L 3.25 ( L 1.25+ L 2 air mail fee)**



Air mail to Sweden. Canc.: Asmara Ferrovia, 16.12.1939

# EXTERNAL AIR MAIL LETTERS

L 2.50



Air mail to Germany- Italian censor and German censor, back

Canc. Assab, 13,12,1940

L 3.75 (L 1.25+ airmail fee)



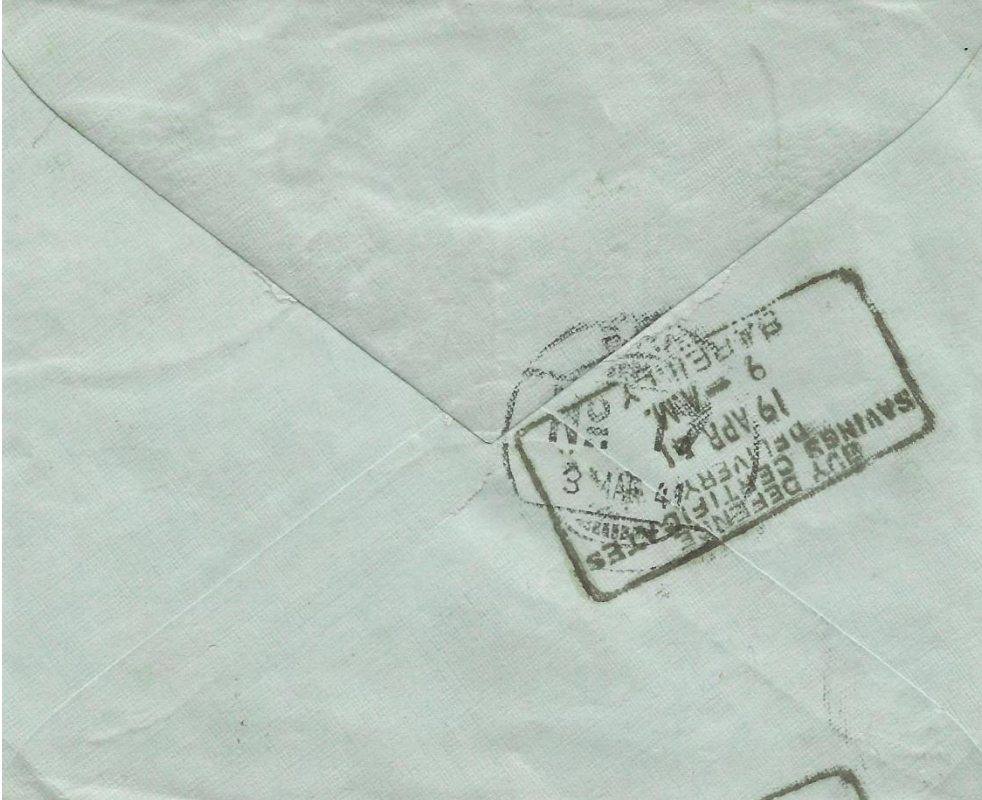
Air mail to Sweden. Italian censor.no 19 Canc:Posta Militare No 1002, 20.2.1941



## BRITISH OCCUPATION 1941-1952

As a part of WWII British imperial troops, mainly from India attacked Italian Eritrea from Sudan in Jan. 1941. In a great battle in Cheren in May, the Italian army was defeated and the surrendered May 17, 1941. During this military campaign and in almost 8 months all post service was performed by Indian Military post offices.

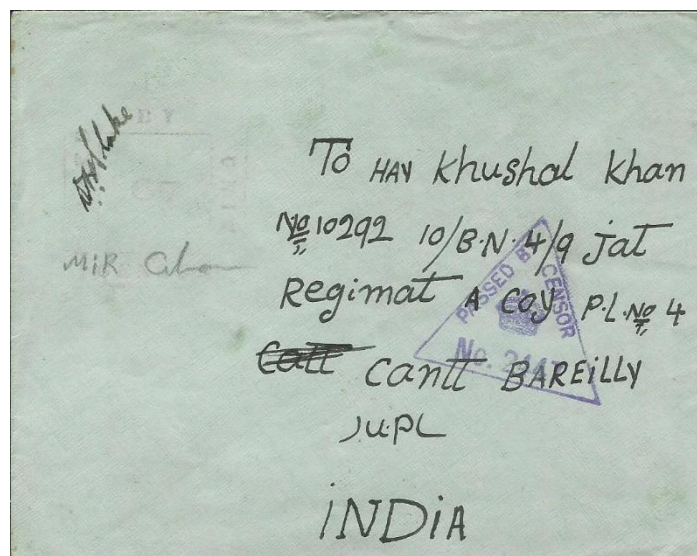
### INDIAN FIELD POST OFFICES



Military cover to India. Canc. Indian FPO No 17. 3.3.1941

In Eritrea only in Febr.- April 1941 during military operations.

Arr :Bareilly 19.4.1941,Censor marks.



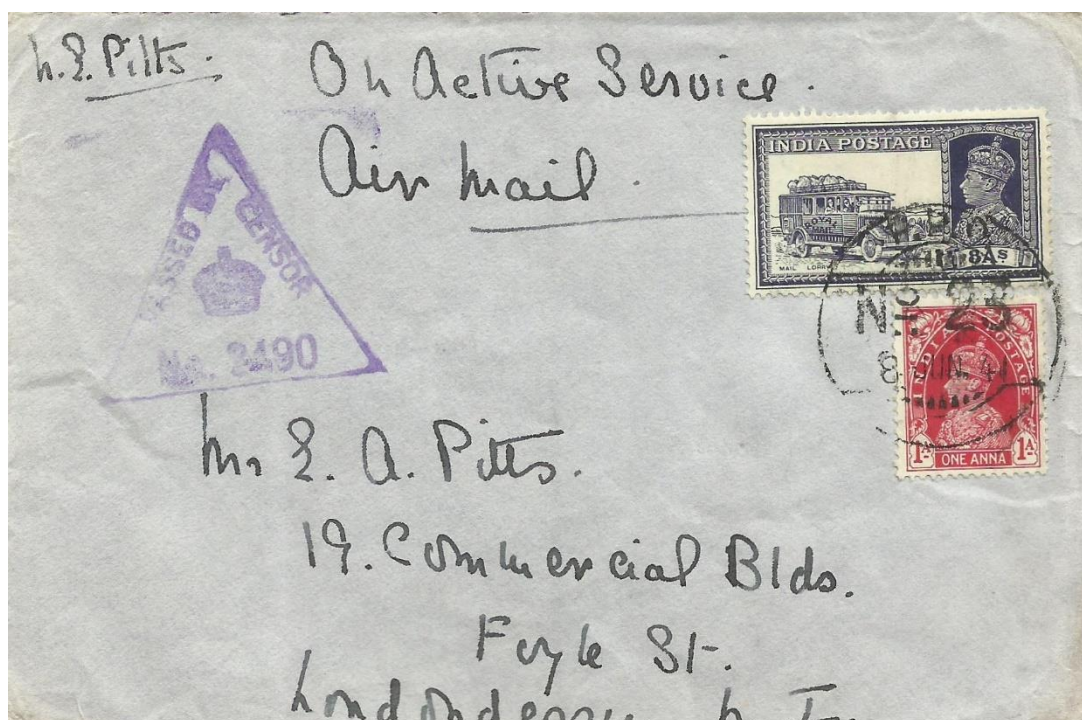
## INDIAN FIELD POST OFFICES



Military cover to Egypt. Canc.: Indian FPO No 15, 30.5.1941  
(10 th Brigade, 5 th Ind. Divn.) Arr.: Cairo 14.6.1941

Military cover to England, British postage 1 sh, British. Censor. No 1908  
Canc: Indian F.P.O No 90 12.5.1942 (Asmara)

## INDIAN FIELD POST OFFICES



Letter to Northern Ireland Postage India 9 A:s Canc.: Indian FPO No 23, 8.6.194 (HQ, 5 th Ind. Divn.) British censor No.2490.



Letter to England. Postage; India 9 A:s, Canc.: MPO 603, 6.5.1941 (9 th Bde, 5 th Ind. Divn.) British censor No.2899

## INDIAN FIELD POST OFFICES



Military cover to PALESTINE. Indian postage 9 annas. Egyptian censor  
Canc: Indian F.P.O No 90 July 1941.(in Asmara 7.5.41-5.3.44) Arr:1941



Military cover to England, British postage 1 sh, British. Censor. No 1908  
Canc: Indian F.P.O No 90 12.5.1942 (Asmara)

# INDIAN FIELD POST OFFICES



Military cover to England , Indian postage 18 A:s , British. Censor. No 2097

Canc: Indian F.P.O No 88, 16.6.1941

## BRITISH FIELD POST OFFICE



Letter to Scotland, British postage 3 d. British censor stamp

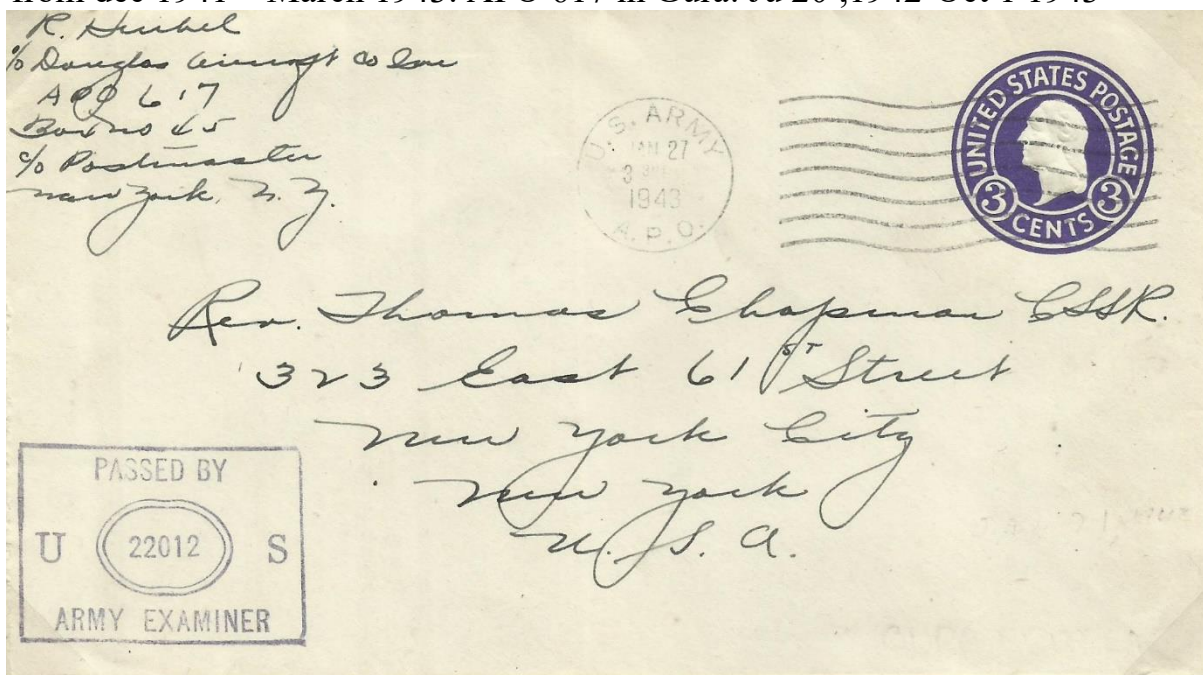
Canc.: British F.P.O 35 , 20.4.1944. Replaced IFPO No 90

in Asmara 7.5.1944? and were in use until 5.7.1948

## U S ARMY POST OFFICE IN ERITREA

In Gura north of Massawa was used a a base for repairing RAF aircraft

from dec 1941 – March 1943. APO 617 in Gura: Ju 20 ,1942-Oct 1 1943



Military prestamped cover, U S postage 3c. Canc, A.P.O. 27.1.1943

Senders address: A.P.O 617 (in Eritrea). U.S. army censor stamp.

# PRISONER OF WAR

**Kriegsgefangenenpost**  
Corrispondenza dei prigionieri di guerra

**Antwort-Postkarte**  
Cartolina postale di risposta

**23**  
**Geprüft**  
**SL367**

An den Kriegsgefangenen  
Al prigioniero di guerra

*Major Puleo Francesco*

**Gebührenfrei! Franco di porto!**

**Absender:**  
Mittente:

**Vor- und Zuname:**  
Nome e cognome  
*Puleo Andrea*

**Ort:**  
Località  
*Asmara*

**Straße:**  
Via  
*Via de Garibaldi 39*

**Landesteil:**  
Provincia  
*Eritrea*

**Militär-Internierter**  
**P/W MIDDLE**  
(vorläufiges Formblatt) **41** (provisorio)

**Gefangenennummer:** *5609-IA*  
Numero del prigioniero

**Lager-Bezeichnung** *Block V*  
Designazione del campo

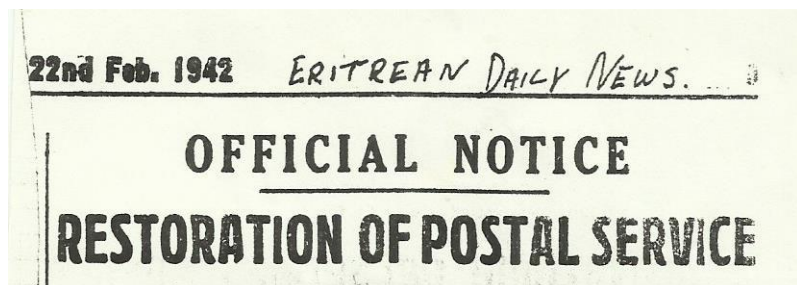
**M.-Stammlager 367**  
Tschenstochau (Gen.-Gouv.)

**Deutschland (Germania)**

Response card to Italian prisoner of war in German camp sent from Asmara 22.5.1944, German censor markings.

## MEF – MIDDLE EAST FORCES

### Restoration of postal service.



March 2 1942 postal service was again available for the public. 17 post offices opened

**Postal rates:** Inland Letter, 2½ d Foreign mail 5d (42c)- 20g, Postcard: 3d

Reg.mail: 5 d ( 42c) . Later: Express fee 6 d (50c)

**Air mail from Jun 22 1942:** 1/3½ d (1,30 Shgs), to America , 2 sh

**Air mail from 1948 :** 9d (75 c) , southern Europe 8d (65c), America 1/6d (1, 50 sh)

:



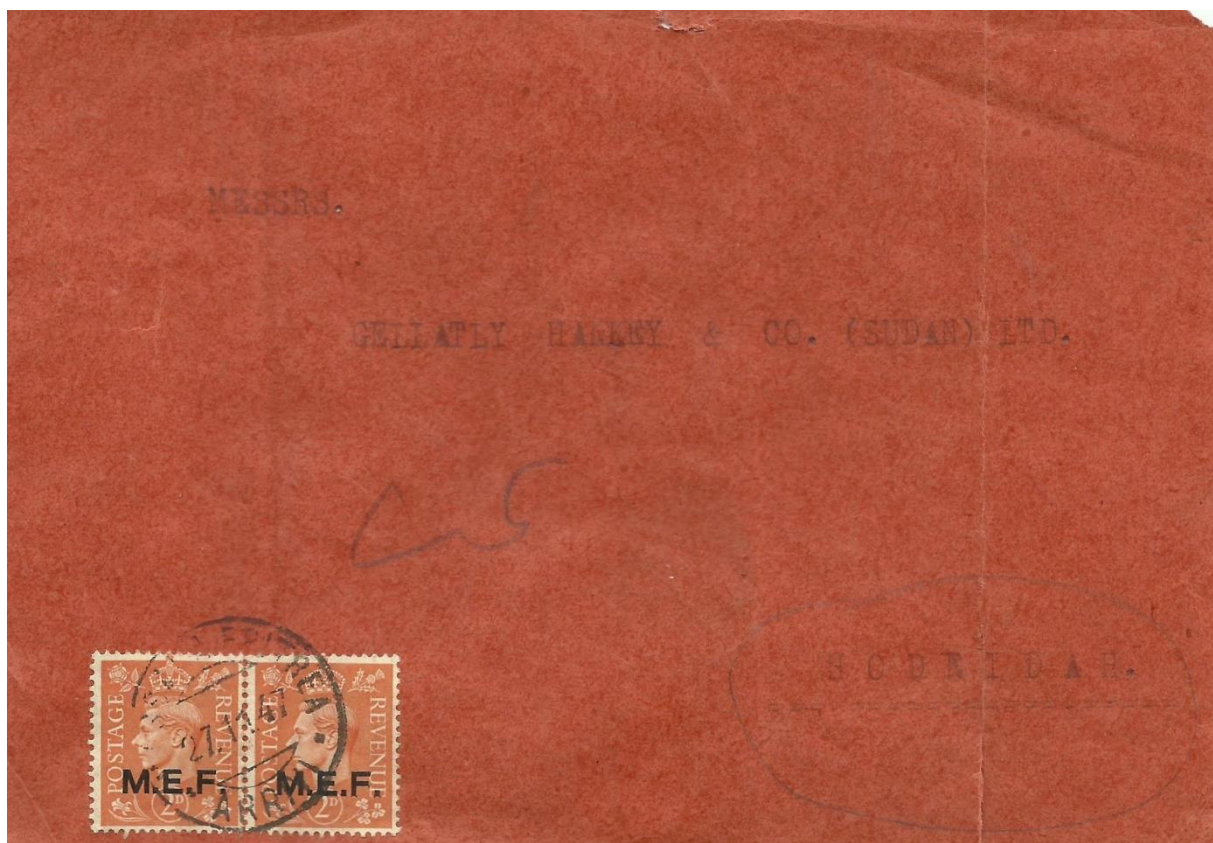
**Internal letter** from Asmara to Massaua. Postage 2½ d (whole period)

Canc.Asmara 8.1.1945 Internal letters from this period are **rare**.

# MEF – MIDDLE EAST FORCES



Postcard to Sweden Postage: 7 d, (3d+ air fee 4d) Canc.: Asmara 16.12.1946



Letter to Jemen. Postage 4d .1 d underfranked. Canc Massaua 27.1.1947 Arr: Hodeida..

# MEF - MIDDLE EAST FORCES

MENAHEM SAMUEL COHEN  
P. O. Box 486  
ASMARA - Eritree

Messrs. O.HABER & COMPANY,  
4, Beaver Street,  
MANCHESTER, 1.

England.



Letter to England. Postage 5d. Canc Asmara 6.9 .1946.

*Abdalla Salem Basurra*  
Piazza Italia, 117 D - P. O. Box 546  
ASMARA

رسالة  
من السيد احمد باسورا الى السيد  
سعيد احمد باسورا

To Saïid Ahmad Basura

Aden camp



Letter to Aden. Postage 5 c. Canc Asmara 27.5.1948. Arr: Aden Camp 1.6.48

# MEF – MIDDLE EAST FORCES



Air mail letter to **India**. Postage 15½ d,(Letter: 5d, air fee.10½d,1942-1952)  
Canc: Asmara 10.11.1945. Arrival Bombay



Air mail letter to **Brazil**. Postage 15½ d, Canc; Asmara Centri 13.8.1945  
Arr Brazil 14.9 1945

# MEF – MIDDLE EAST FORCES



Air mail to **Sweden** Postage 27 d, Letter 5d, Air mail fee(5-10g) 22d

Canc.: Cheren 25.9.1947



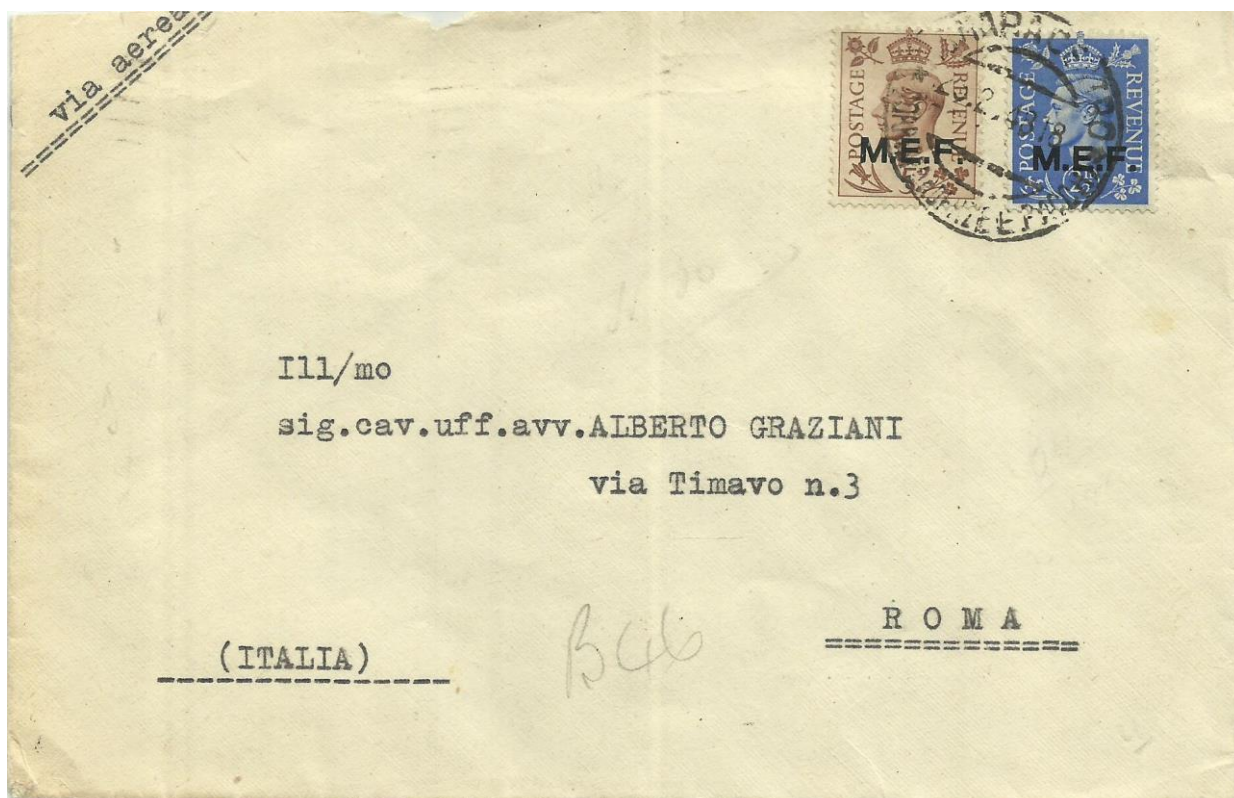
Air mail to **Sweden**. Postage 26½d. Canc.: Asmara 16.10.1947

# MEF – MIDDLE EAST FORCE



Air mail to Switzerland, Postage 15d. 1942-47) Canc.: **Decamere** 11.12.1947

Arr.rev.: Genova 17.12.1947



Air mail to Italy. Postage 7 d (1948-1952) Canc.: Asmara 25.3.1949

Arr.: Roma 1.3.1948

**MEF – Reg.mail**



Reg.mail to Aden. Postage: 10 d (reg.5d) Canc.:Massaua 25.5.42. Arr.: Aden 6.6.1942



Reg .airmail to Scotland. Postage 20½d(reg 5d) Canc Asmara 23.9 44. British Censormarks

1948 British stamps overprinted B.M.A Eritrea were issued (British Military Administration). From 1950 stamps overprinted B.A Eritrea were used until the end of the British rule.

### INTERNAL MAIL



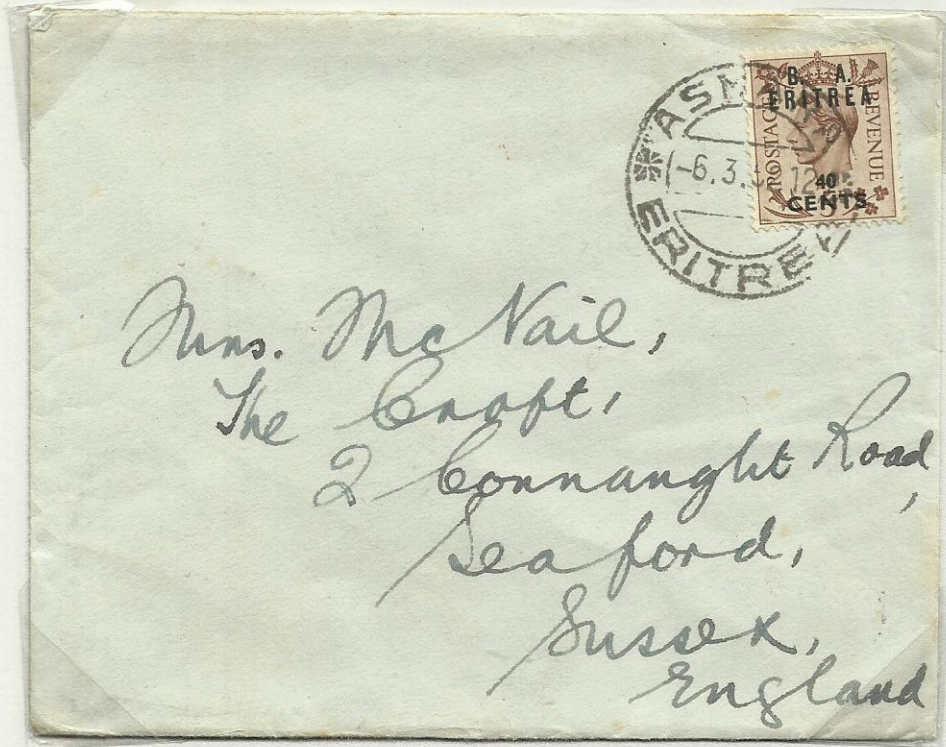
Internal letter to Asmara. Postage: 2½d (1942-52) Canc.: Nefasit 16.4.1949

### EXTERNAL MAIL



Letter to Italy. Postage: 4 d Canc.: Asmara Centro 24.8.1948 Arr.: Sospiro 20.9.1948

EXTERNAL MAIL



Letter to England. Postage, 5d=40c Canc.: Asmara 6.3.1952



Letter to Lebanon, Postage 50c. Canc.: Asmara 8.7. 1948

Arr.: 12.7.1948 and Bhamdoun 13.7.1948

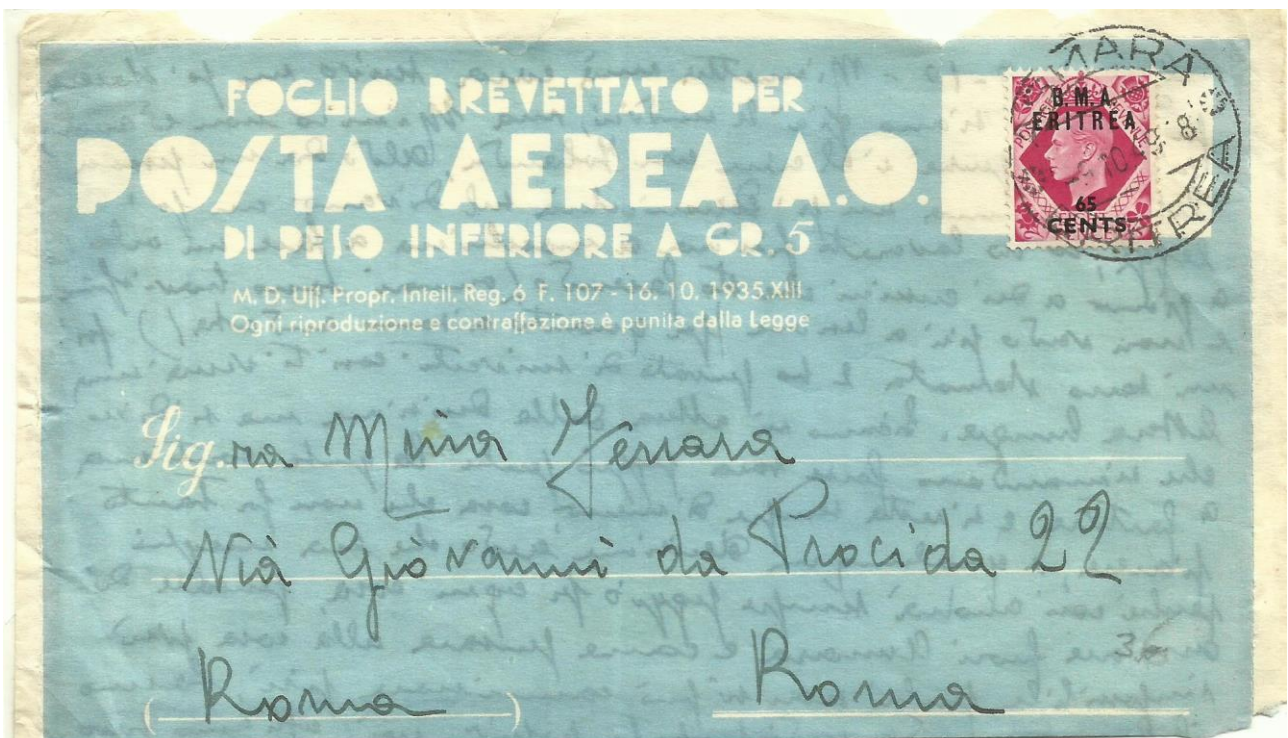
## EXTERNAL MAIL B.A: Eritrea



Areogramme to Sudan Postage 50c(=surfacemail).

Canc. Asmara. Arr.: Khartoum 19.2.1950

## EXTERNAL MAIL . REDUCED FEE (NEIGHBOUR CONTRIES)

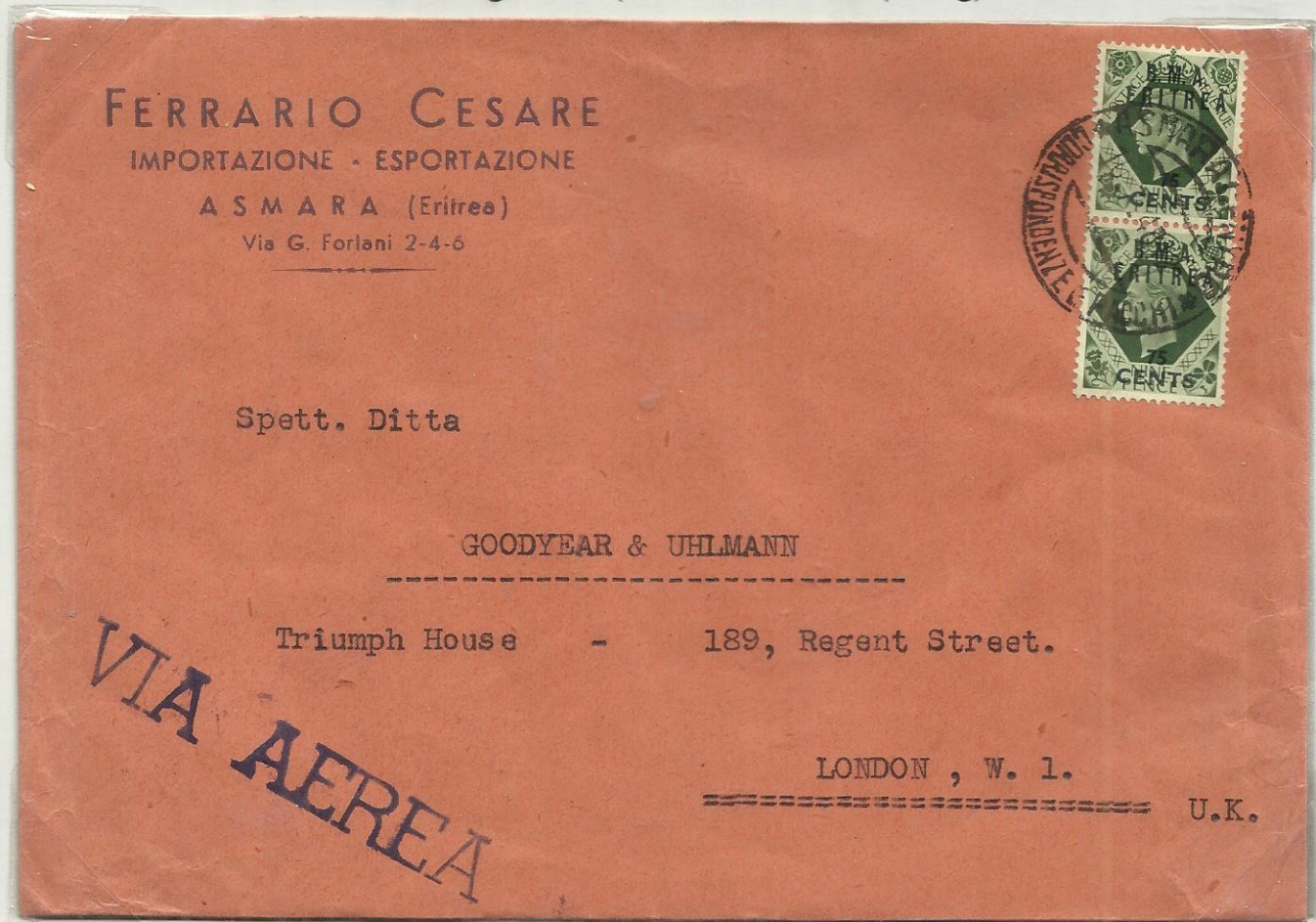


Air letter to Italy (front). Postage 65c (1948-52) Canc.: Asmara 9.10.1948

B.M.A. ERITREA- EXTERNAL AIR MAIL

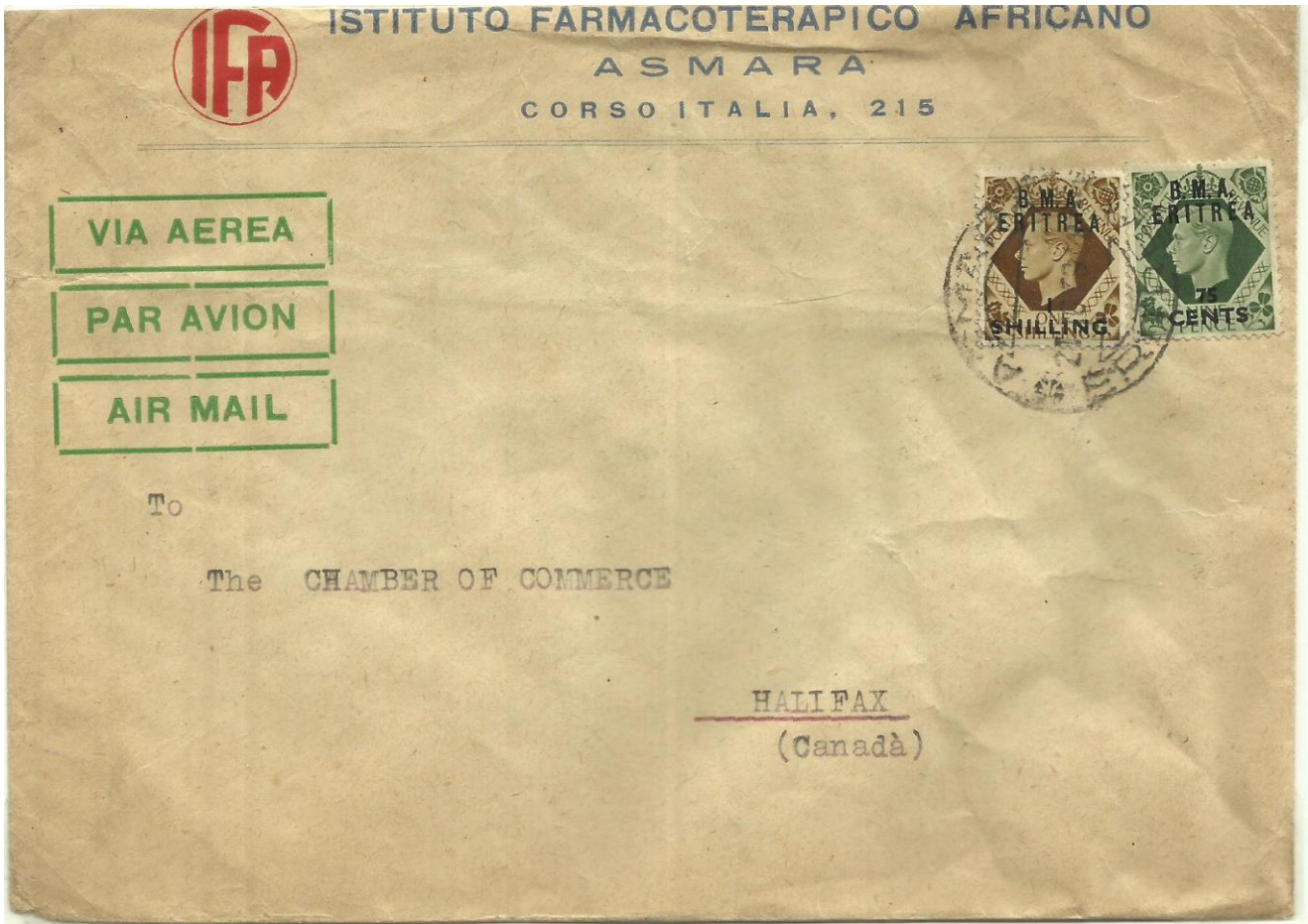


Air letter to Sweden. Postage 100c (42 c+ air fee 60c (5-10g). Canc.: Asmara 21.6.48



Air letter to England. Postage 150c (42c+ air fee 110c(15-20g).Canc Asmara 10.7.1948

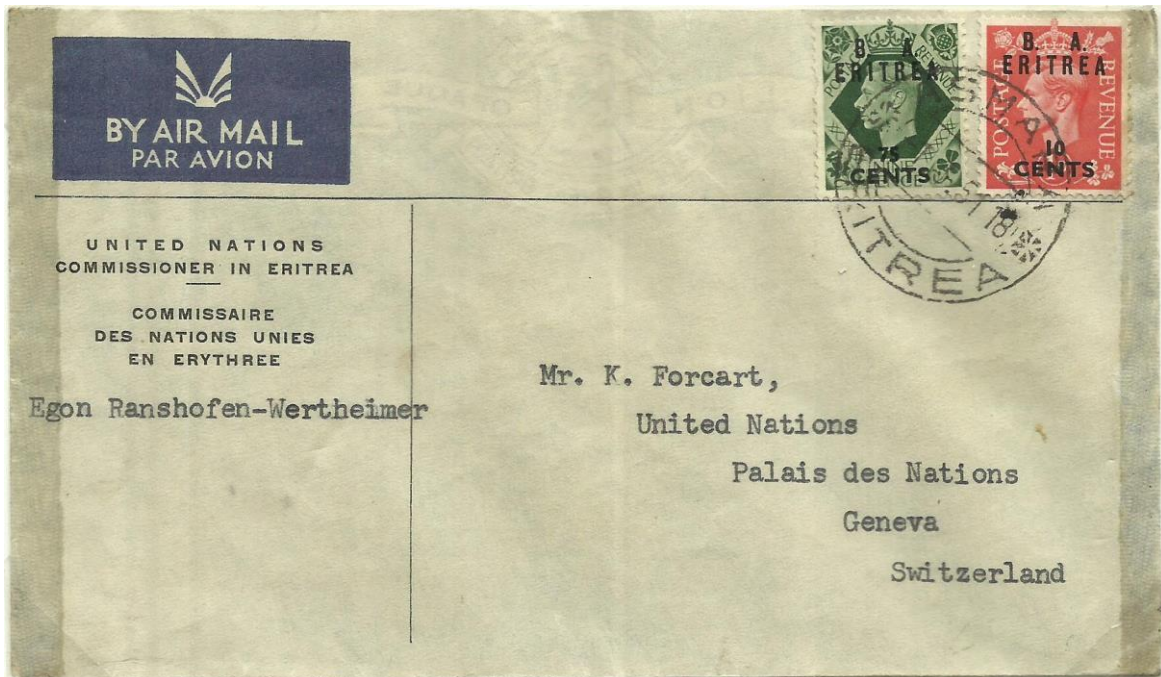
# B.M.A. ERITREA- EXTERNAL AIR MAIL



Airletter to Canada. Postage 175c (42 c+ air fee 130c (5-10g). America)

Canc.: Asmara 21.6.48

## B.A.ERITREA



Air letter to Switzerland. Postage 85c. (42c+ air fee 42c (reduced 5-10g)

Canc.: Asmara 1.3.1951

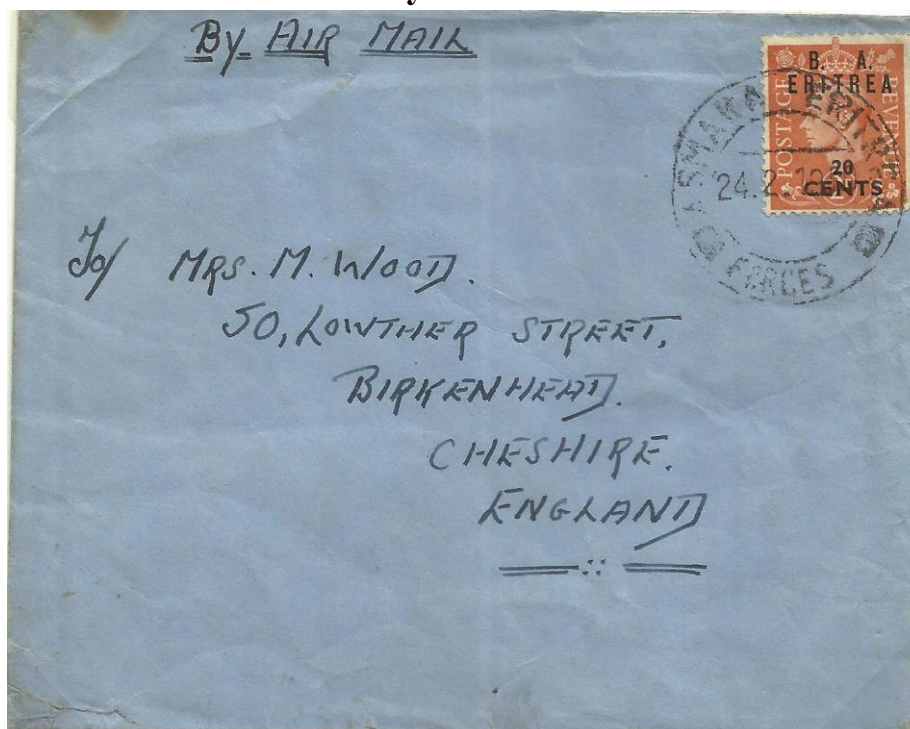
## B.A. ERITREA- EXTERNAL AIR MAIL



Airletter to England. Postage 75c (42 c+ 30c -5g,. 1948-1952)

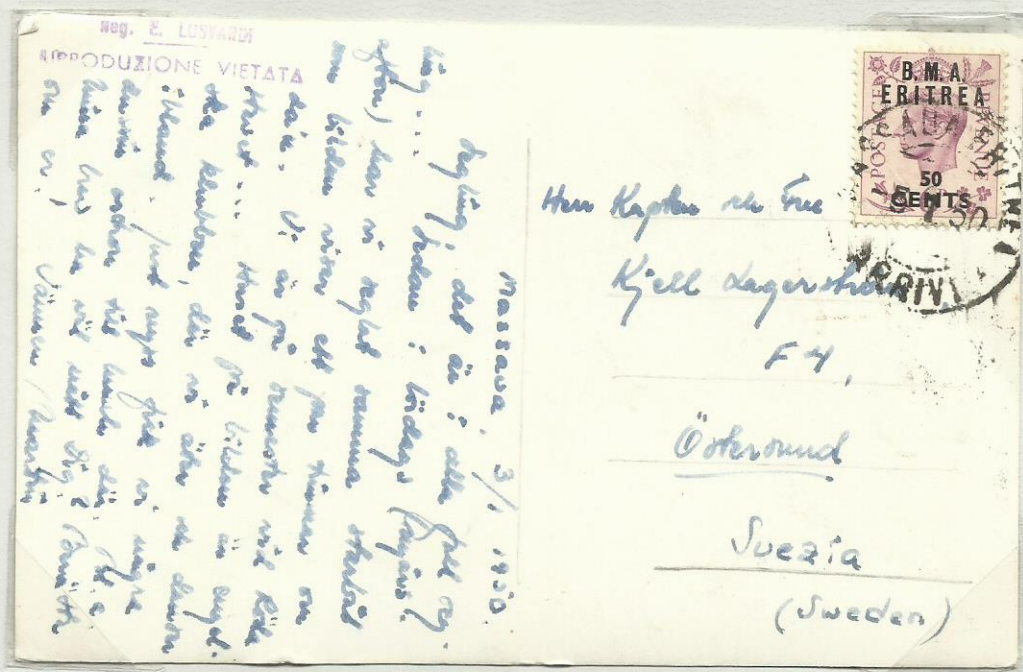
Canc.: Asmara 5.7.1950

### B.A.ERITREA – Military mail



Military air letter to England. Postage: 20c. ) Letter:free,  
air fee 20c.) Canc: Asmara Forces 24.2.1950

**B.M.A. ERITREA- EXTERNAL POSTCARDS**



Air postcard to Sweden. Canc. Massaua 5.1.1950

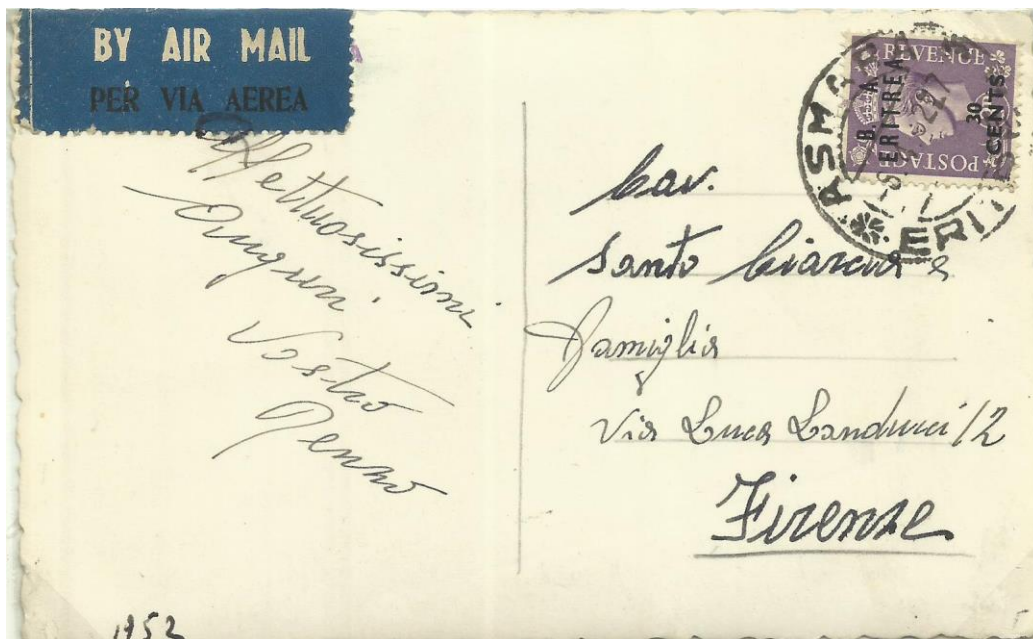


Air postcard to Switzerland. 50c. Canc: .Piroscrafo Gerusalemme, 16.4.1950  
 Transit: Massaua 16.4.1950. The ship from Lloyd Triestino on picture.

**B.A. ERITREA- EXTERNAL POSTCARDS**



Air postcard to Jersey. Postage: 35c Canc. Asmara 3.7.1950



Air postcard, only sender to Italy. Postage: 30c.

Canc.: Asmara 8.4. 1952

B.A. ERITREA-EXTERNAL REG. MAIL



RACCOMANDATA



Preg.mo Signor

GUGLIELMO PULIDORI  
Via Sobrero n°29

T O R I N O (605)

R 2146  
ASMARA

Reg.letter to Italy. Postage: 85 c (Letter 42c, Reg fee:42c, 1942-52).

Canc. Asmara 1.12.1950 Arr: Torina 27.12.1950



Spett. Ditta  
Prof. Girolamo Fagnano  
Via Pandolfini 18

R 3067  
ASMARA

Firenze

Reg.letter to Italy. Postage: 110c (Letter 70c (20-40g) Reg.fee: 42c

Canc.: Asmara 30.6.1951. Arr.: Firenze 5.7.1951

**B.A. ERITREA-EXTERNAL AIR REG. MAIL**



Reg.air.letter to Italy. Postage: 1.20 c (Letter 42c, Reg fee:42c, air. 35c 1948-52).

Canc. Asmara 5.6.1951 Arr.: Torino 10.6.1951



Reg.air.mail

To USA

Postage:220c

Letter:42 c,  
reg.fee 42c, air  
130c

Canc.: Asmara

11.6.1952

Arr.: Mishwaka

18.8.1952

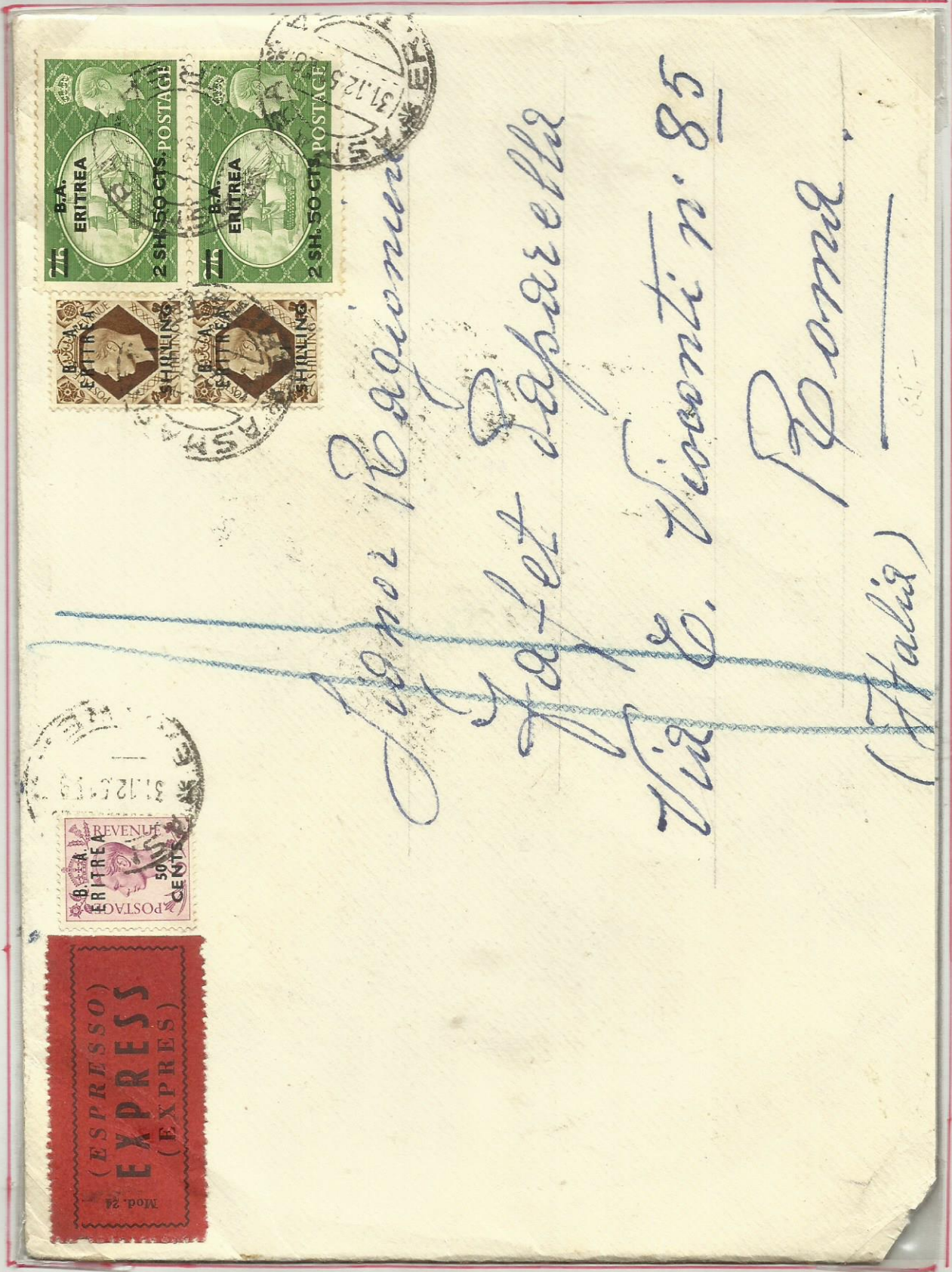
# EXPRESS LETTER TO ITALY



Express air letter sent to Italy. Postage; 2.50 sh (15-30 g 65c (220-40g) 1.25 sh Air fee (20-25g), Express fee 50c)

Canc: Asmara 2.9.1952 Arr Roma- 3.9.1952

EXPRESS LETTER TO ITALY



Express letter(air) sent to Italy. Postage; 7.50 sh (Express fee 50c)

Canc: Asmara 31.12.1951 Arr Roma- 4.1.1952

# TELEGRAM

Ufficio che ha in carico il fascicolo  
**ASMARA**

Indicazioni di urgenza  
**003581**

N. **8**

Modello 65  
Edizione 1938-XVI

Circuito sul quale si deve fare l'inoltro del telegramma  
**411**

Ufficio Telegrafico di **ASMARA**  
**TELEGRAMMA**

**BUONO** per una tassa di <sup>(1)</sup> *Shgs dieci e centesimi dieci (10.10 Shgs)*  
staccato per il telegramma N. *172*, accettato dall'Ufficio di *Sturminstermarshall*  
il giorno *27-11* 19*51*, ricevuto il *28-11* 19*51*  
con indicazione di via <sup>(2)</sup> *c/w*

Il Governo non assume alcuna responsabilità civile in conseguenza del servizio della telegrafia.  
Le tasse riscosse in meno per errore ed in seguito a rifiuto o irreperibilità del destinatario devono essere completate dal mittente.

Trasmesso il ..... 19..... ore..... pel circuito N.....  
all'Ufficio di..... Trasmittente.....

Qualifica	DESTINAZIONE	PROVENIENZA	Num.	Parole	Data della presentazione Giorno e mese Ore e minuti	Via d'istradamento e indicazioni eventuali d'Ufficio
		<i>ASMARA CENTRO</i>		<i>12</i>	<i>1245</i>	

**AVVERTENZE**  
Questo buono, valevole per tre mesi a partire dal giorno successivo a quello della sua emissione, serve per inviare un telegramma a qualsiasi destinazione, per qualsiasi via, e può essere presentato a qualunque ufficio governativo o ferroviario dello Stato.  
Se la tassa del telegramma supera l'ammontare del buono, la differenza deve essere pagata in denaro all'atto della presentazione della risposta.

N. B. Il telegramma dev'essere scritto con chiarezza, per modo che la lettura ne sia facile.

*Indicazioni eventuali tassate*..... **C. BONIFACIO**  
*Destinatario*..... **CARFRAE**  
*Destinazione*..... **STURMINSTERMARSHALL 252 (ENGLAND)**  
*Testo*  
**SORRY MISUNDERSTANDING NO CABLES TONY BETTER  
TODAY LOVE BOTH**

*Cognome, nome e domicilio del mittente:*  
**CAPT AS IRWIN  
HQ ERITREA DIST  
ASMARA ERITREA**

*152*

Telegram to England, 12 words. Franking: 4 sh 30 c back+ 10sh 10c on form.Total 14sh 40c Canc. Asmara Telegrafo 28.11.1951 and Asmara Centro 7, 28.11.1951

Form Model 65, ed 1938-XVI . Pinholes us usual in telegrams





# PARCEL CARD

**Erित्रea**  
**ASMARA**  
(Central)

**Parcel Post**  
53

**COUPON**  
May be detached by the Addressee  
(Peut être détaché par le destinataire).

**Stamp of Office of Origin**  
(Timbre du bureau d'Origine).

**Label Numbers**  
(NUMEROS D'ORDRE)  
ERITREA  
ERYTHREE

**Country of Origin**  
(PAYS D'ORIGINE)  
ERITREA  
ERYTHREE

**Insured Value**  
(VALEUR DECLARÉE)  
3 SHILLINGS  
50 CENTS

**Despatch Note**  
(BULLETTIN D'EXPEDITION)

**Parcels** (Collis) } 1  
**Customs Declarations** (Déclarations en Douane) } 1  
**Certificates or Invoices** (Certificats ou Factures) } 0

**Addressed to** à  
PANZANI SELENE

**Place of Destination** (Lieu de Destination) } MOGLIA (MANTOVA)  
**Street and No.** (Rue et Numéro) } V. Virgilio 20

**Country of Destination** (Pays de destination)  
Italy

**Weight** (Poids)  
2.000 gr.

**Customs Stamp**  
(Timbre de la Douane)

**Particulars of Despatch** (Acheminement)  
Route (Voie)  
Office of Exchange (Bureau d'Echange)

**Stamp of Office of Origin**  
(Timbre du bureau d'Origine)  
Asmara

**Name and address of sender** (Nom et domicile de l'expéditeur)  
Buffalo Naini  
V. Selamcha 6

**Nature of Packing** (Nature de l'Emballage)  
VINO

**Gold, Fine** (Fris.-Or.)

**Particulars of Despatch** (Acheminement)  
Route (Voie)  
Office of Exchange (Bureau d'Echange)

(\*) To be filled-up by the office of entrance into, or by the customs service of the country of destination.  
(Cadre à remplir par le bureau d'entrée ou par le service de la douane du pays de destination).

Parcel 2 kg sent to Italy. Postage: 5 sh 50 c.

Canc: Asmara-Centro, Pacci, 23.4.1952 Arrival: Montova 5.5, 1952, 140 Lire douane

(B) That the parcel may be returned to the sender if not claimed within the prescribed period.

(C) **LIRE PACCHETTI POSTALI**  
20 LIRE  
SUL BOLLETTINO SULLA RICEVUTA

(D) **LIRE PACCHETTI POSTALI**  
20 LIRE  
SUL BOLLETTINO SULLA RICEVUTA

(E) **LIRE PACCHETTI POSTALI**  
50 LIRE  
SUL BOLLETTINO SULLA RICEVUTA

(1) Indicate name and address of third party.  
Indiquer éventuellement le nom et l'adresse.